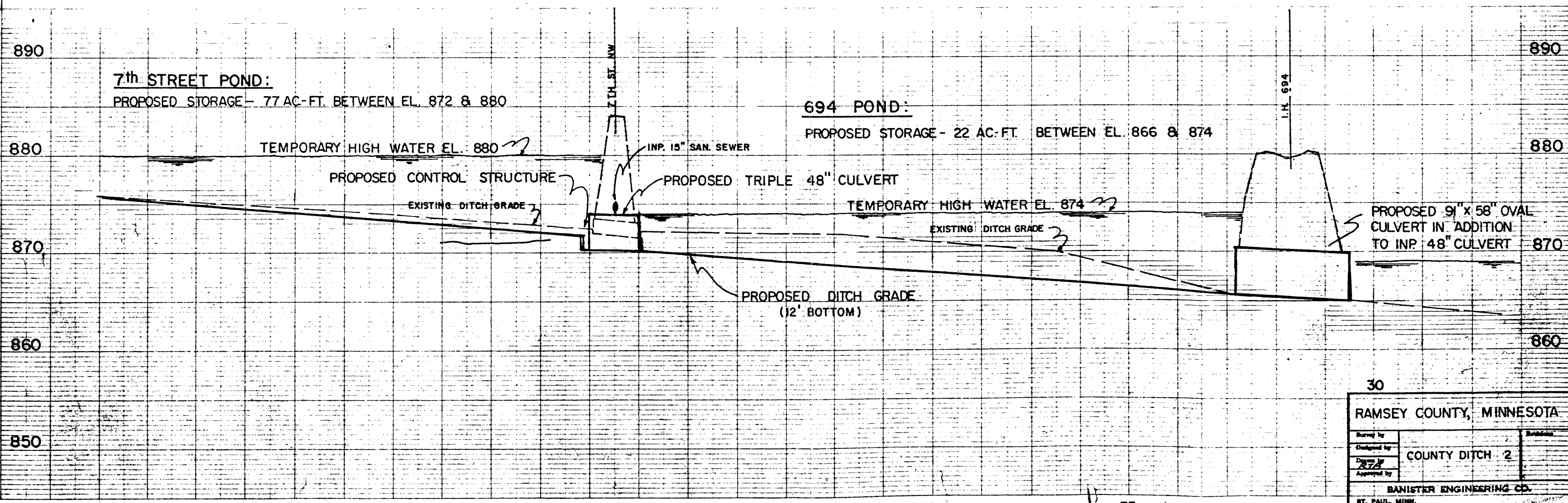
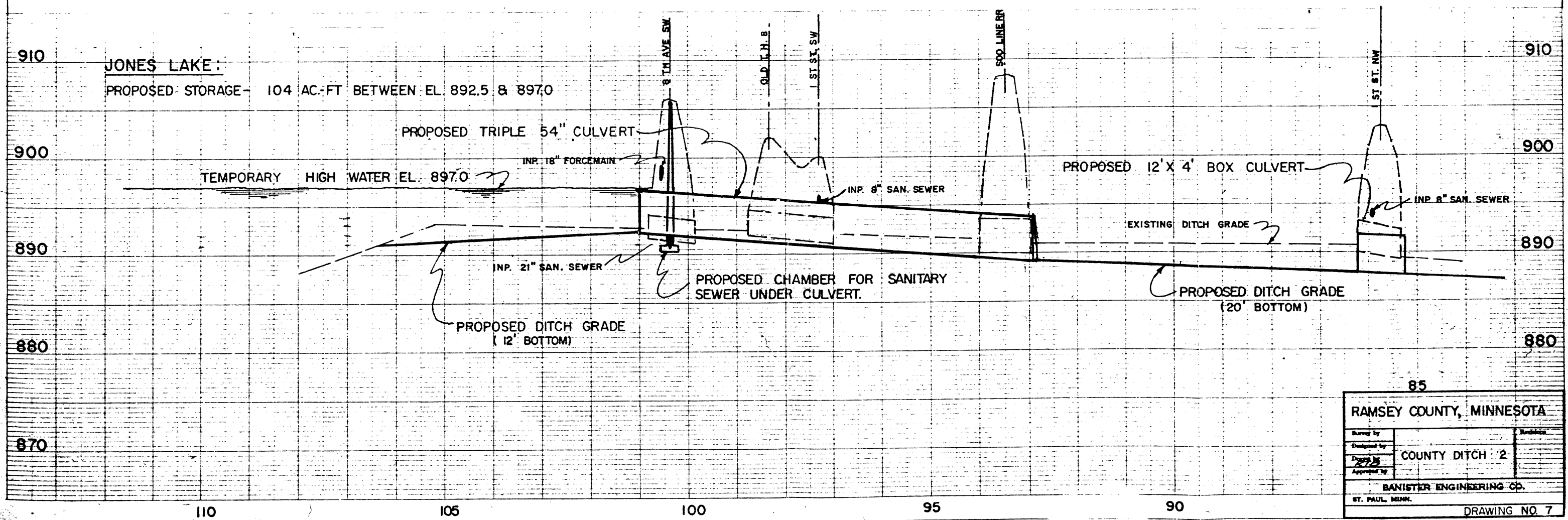
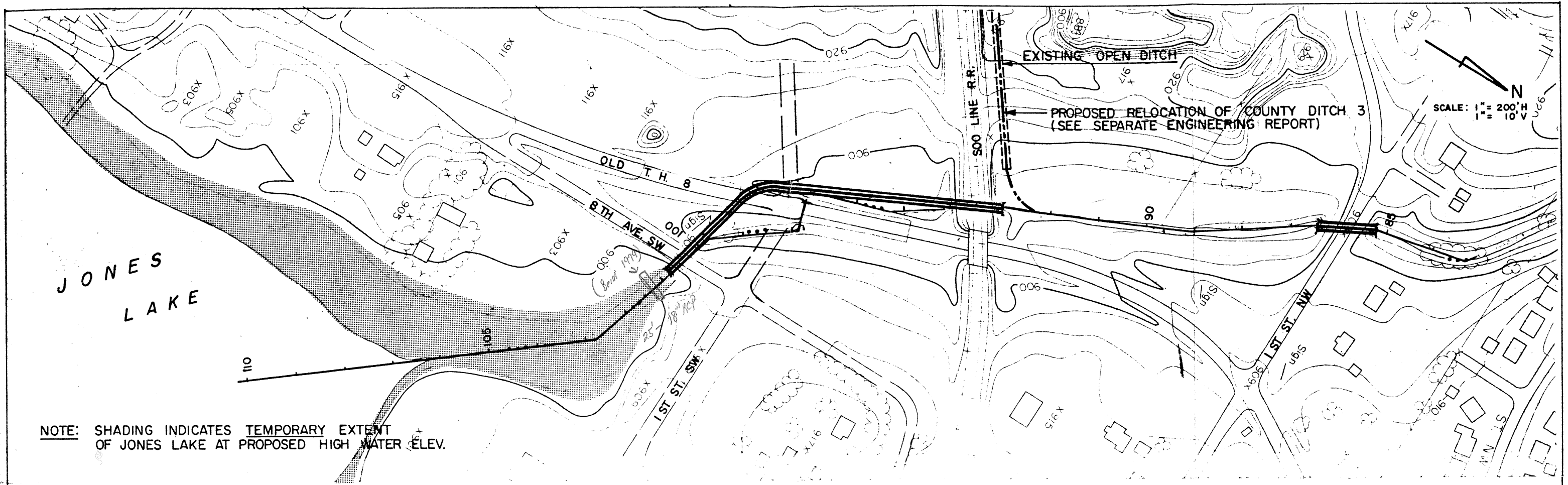


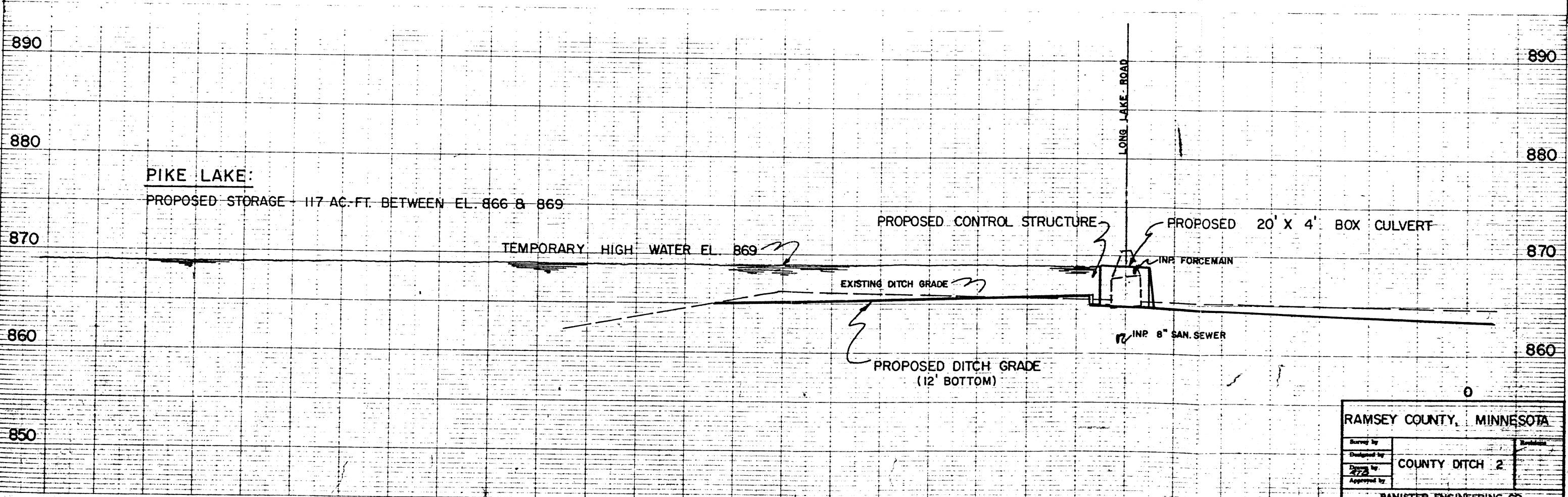
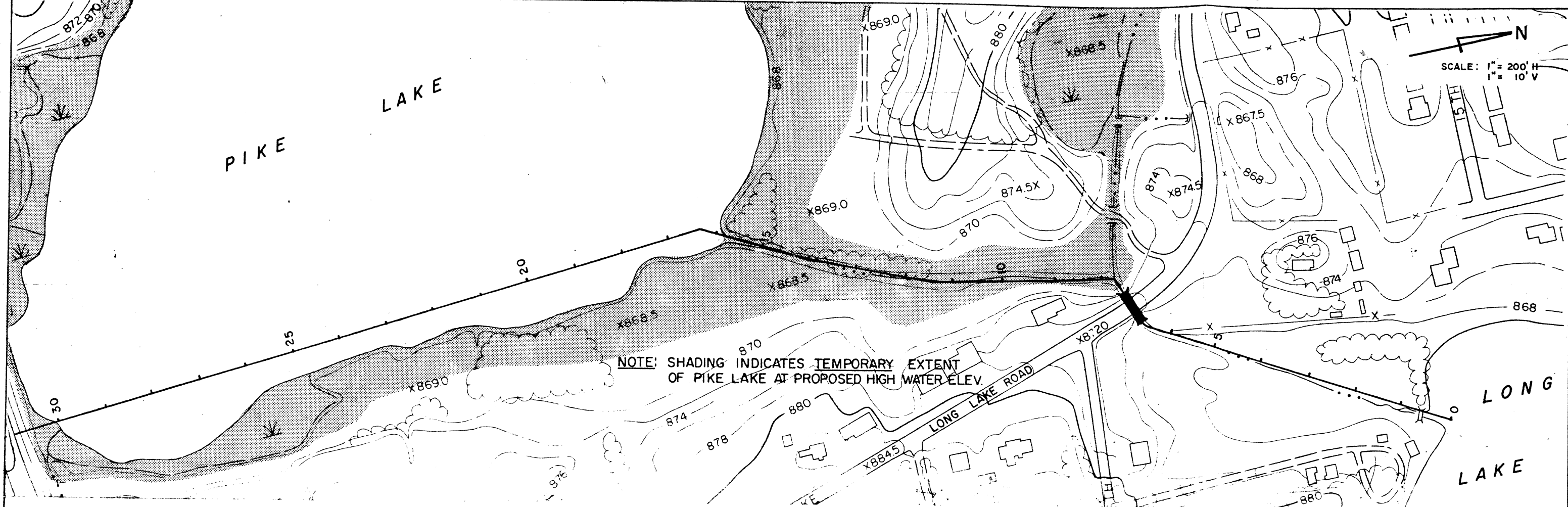
N
 SCALE: 1" = 200' H
 1" = 10' V
 PIKE LAKE

NOTE: SHADING INDICATES EXTENT OF TEMPORARY PONDS (7 TH STREET & 694) AT PROPOSED HIGH WATER ELEV.

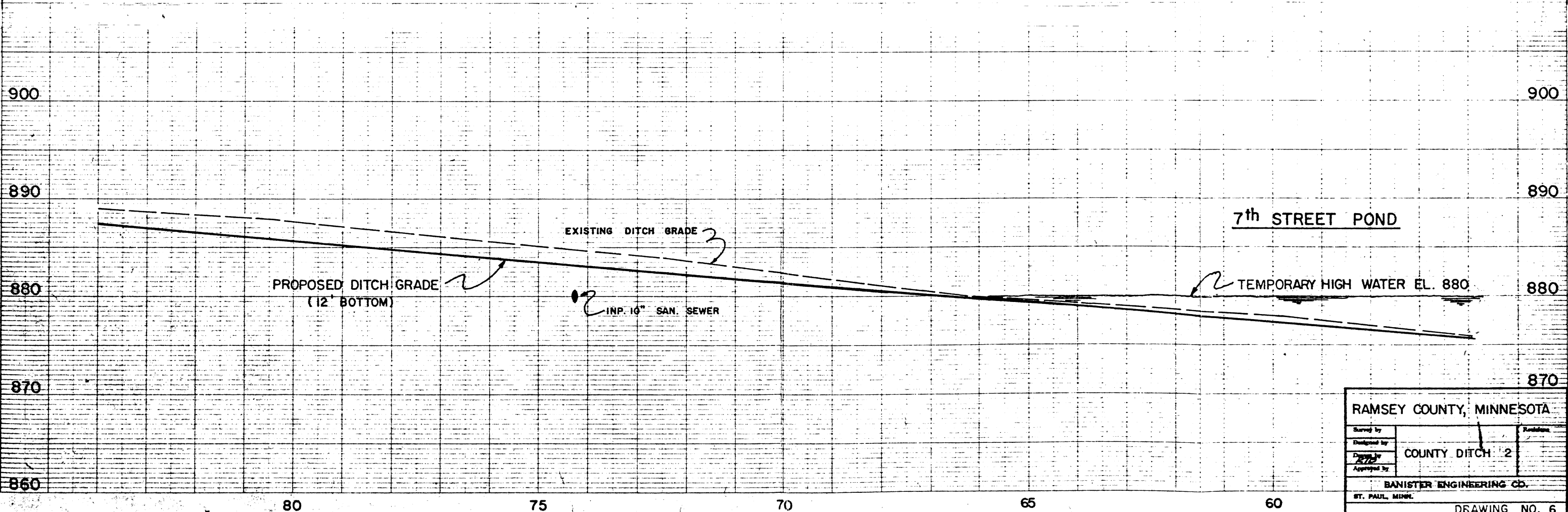
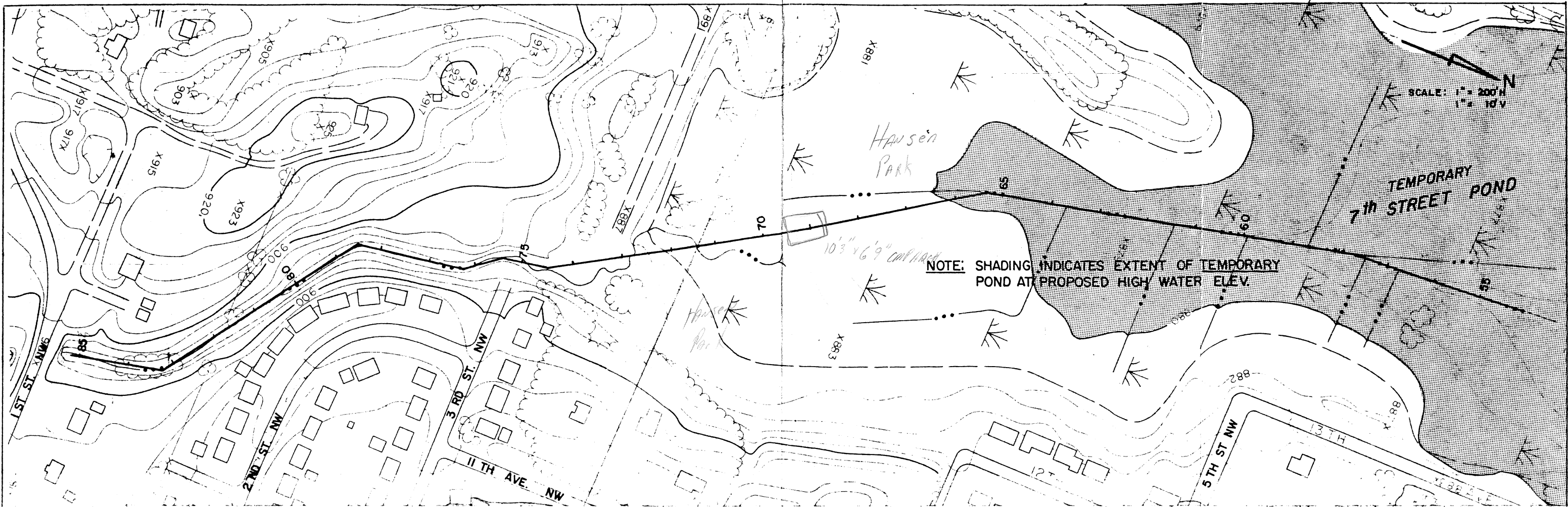


30	
RAMSEY COUNTY, MINNESOTA	
Surveyed by	Checked by
Designed by	COUNTY DITCH - 2
Drawn by	
Approved by	
BANISTER ENGINEERING CO.	
ST. PAUL, MINN.	
DRAWING NO. 5	





RAMSEY COUNTY, MINNESOTA		
Surveyed by	Designed by	Reviewed by
	472	
COUNTY DITCH 2		
BANISTER ENGINEERING CO.		
ST. PAUL, MINN.		
DRAWING NO. 4		



RAMSEY COUNTY, MINNESOTA		
Surveyed by		Reviewed
Designed by	COUNTY DITCH 2	
Drawn by	2/7/2	
Approved by		
BANISTER ENGINEERING CO.		
ST. PAUL, MINN.		
DRAWING NO. 6		