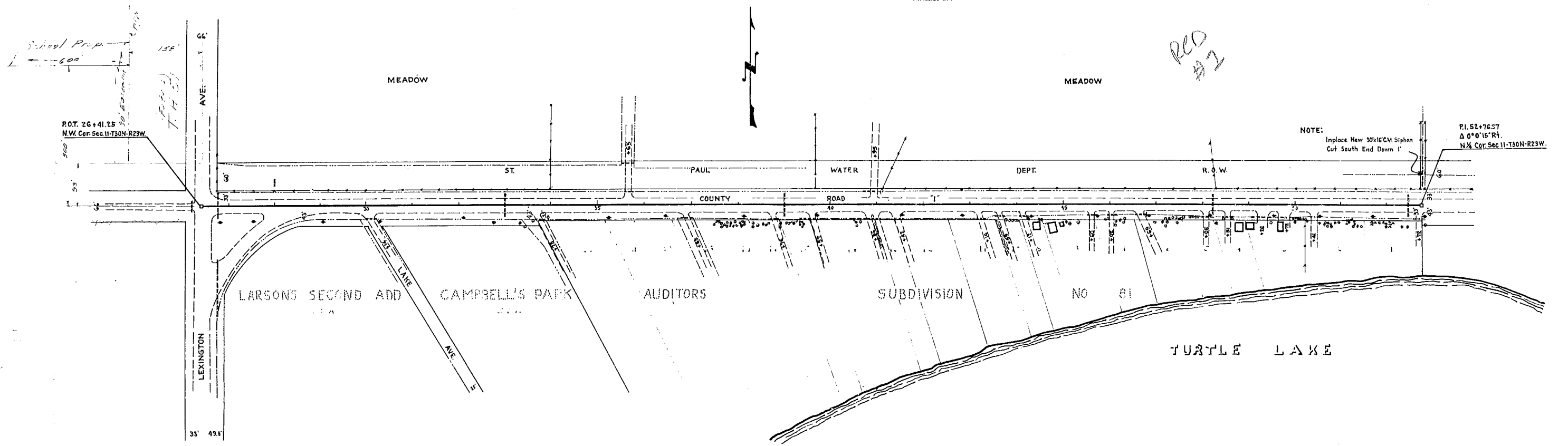


26+77.6 26+77.1 26+98.1 30+14.1 33+00.6 33+75.1 35+61.1 35+65.1 36+45.1 38+70.1 39+00.6 39+47.1 40+90.1 40+95.1 41+42.1 43+14.1 43+59.1 44+12.1 45+60.1 46+02.1 46+69.1 48+05.1 48+20.6 49+26.1 49+72.1 50+41.1 52+45.6 52+72.1
 Imp. 24"x52"CM. Imp. 24"x112"CM. Imp. 15"x36"CM. Imp. 15"x30"CM. Imp. 24"x52"CM. Imp. 15"x20"CM. Imp. 15"x20"CM. Imp. 15"x16"CM. Imp. 15"x30"CM. Imp. 15"x20"CM. Imp. 24"x52"CM. Imp. 15"x38"CM. Imp. 15"x38"CM. Imp. 30"x33"V.H. Imp. 15"x20"CM. Imp. 15"x20"CM. Imp. 15"x3"Conc.P. Remove PI.12"x20"CM. Imp. 15"x3"Conc.P. Remove PI.12"x20"CM. Imp. 15"x20"CM. Remove PI.12"x20"CM. Imp. 15"x20"CM. Remove PI.12"x20"CM. Imp. 15"x20"CM. Conc. H.wall. Imp. 15"x3"V.H. Imp. 12"x144" C.I.P. Imp. 15"x144" C.M. Imp. 12"x32"CM. Imp. 12"x32"CM. Imp. 15"x20"CM. Imp. 15"x20"CM. Imp. 24"x54"CM. Imp. 15"x20"CM.



NOTE:
 Inplace New 30"x10"CM Siphon
 Cut South End Down 1'

B.M. Top Mon.
 Lexington Av & Co. Rd. 1
 Elev. 892.58

B.M. Top S.E. Cor. Conc. M.H. Slob.
 45' Lt. Sta. 36+00
 Elev. 892.78

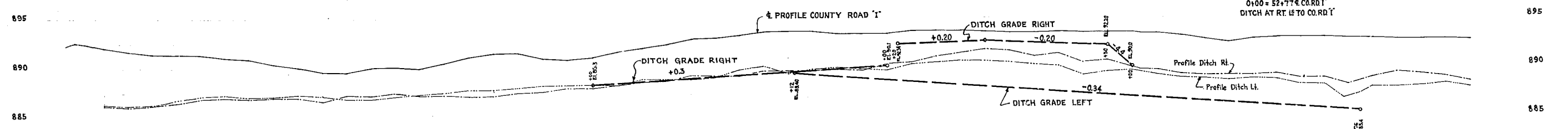
B.M. Top S.E. Cor. Conc. M.H. Slob.
 45' Lt. Sta. 42+34
 Elev. 893.60

88.3 88.45 88.6 88.75 88.9 89.05 89.2 89.35 89.5 89.65 89.8 89.95 90.1 92.4 92.5 92.6 92.7 92.8 92.9 92.4 92.3 92.2 90.0 89.0

DITCH GRADES RIGHT

DITCH GRADES RIGHT

DITCH PROFILE LT. SIDE CO. RD. 1
 Proposed Inv. Of Siphon El. 8554 (South End)
 885



NOTE: CLEAN PRESENT DITCH TO GRADE
 STA. 37+00 TO STA. 43+00 RIGHT

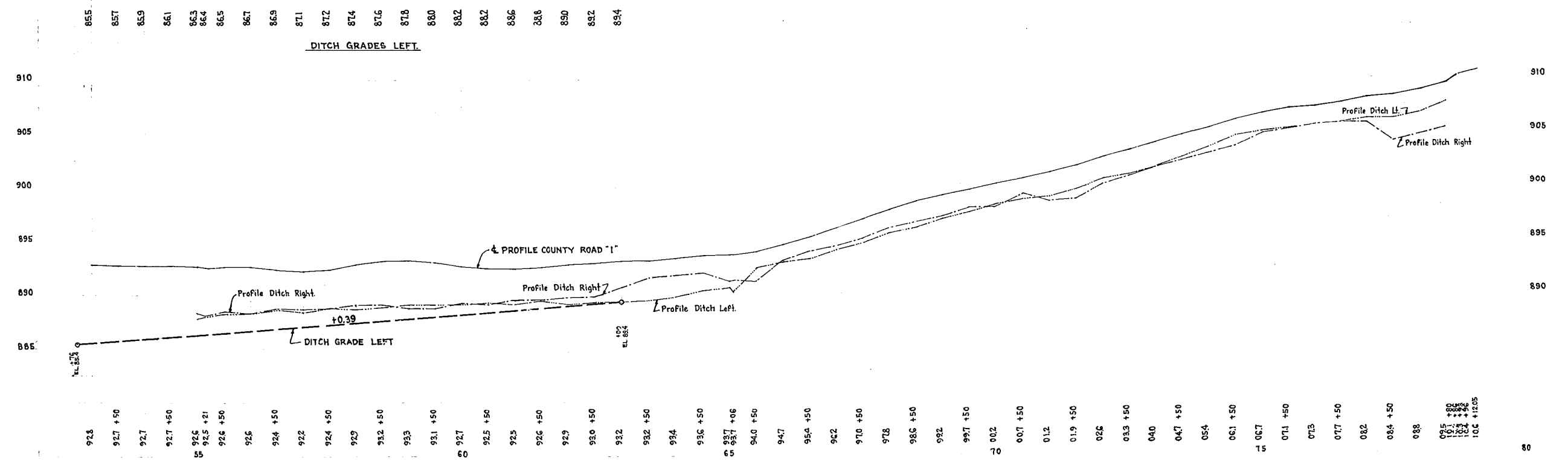
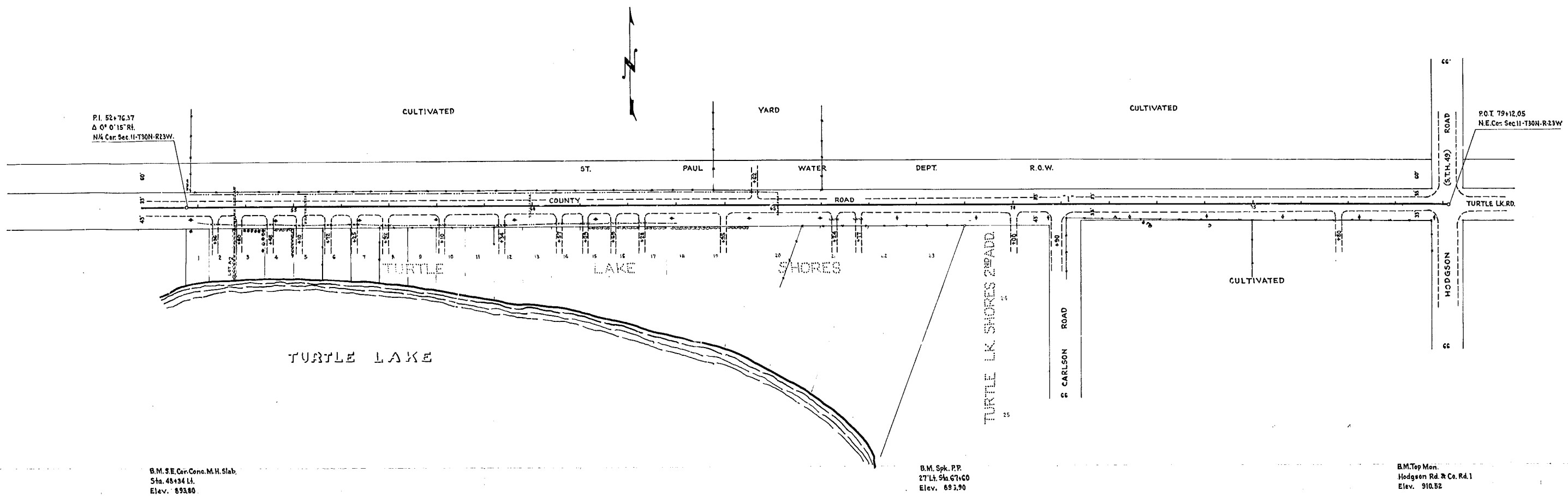
89.3 89.1 88.9 88.8 88.6 88.4 88.3 88.1 87.9 87.7 87.6 87.4 87.2 87.1 87.0 86.9 86.7 86.6 86.4 86.2 86.0 85.9 85.7 85.5

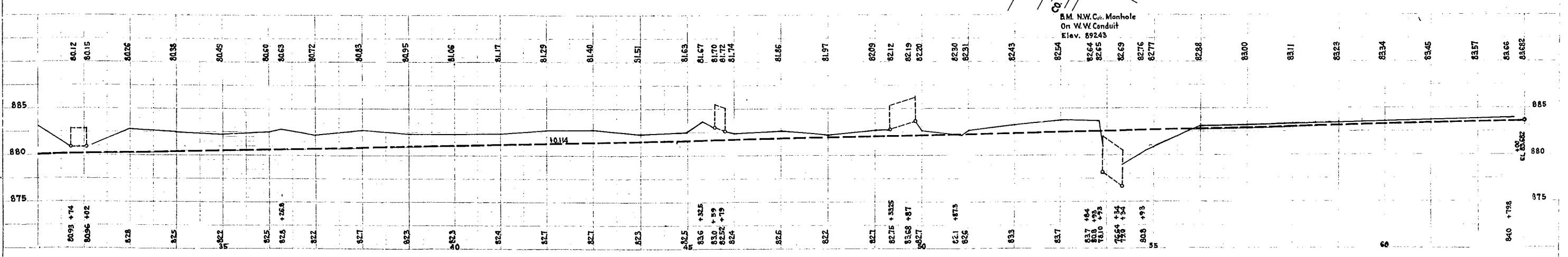
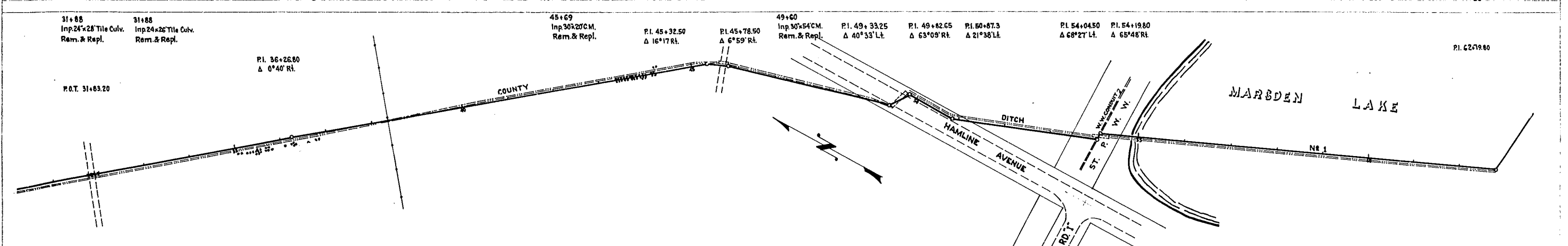
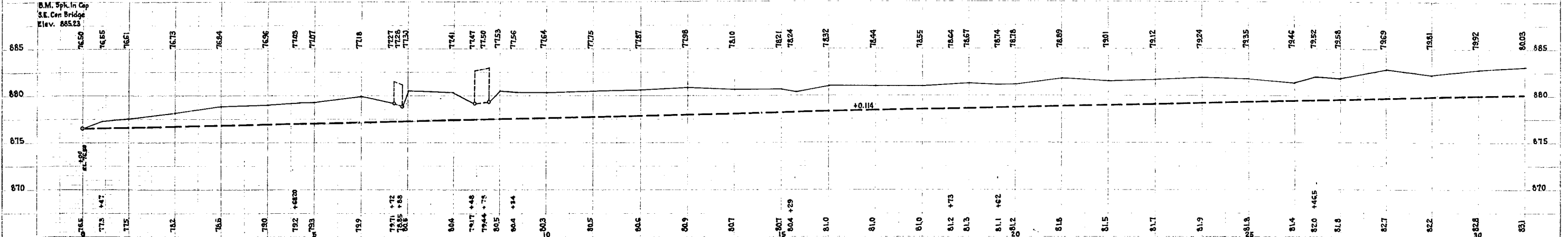
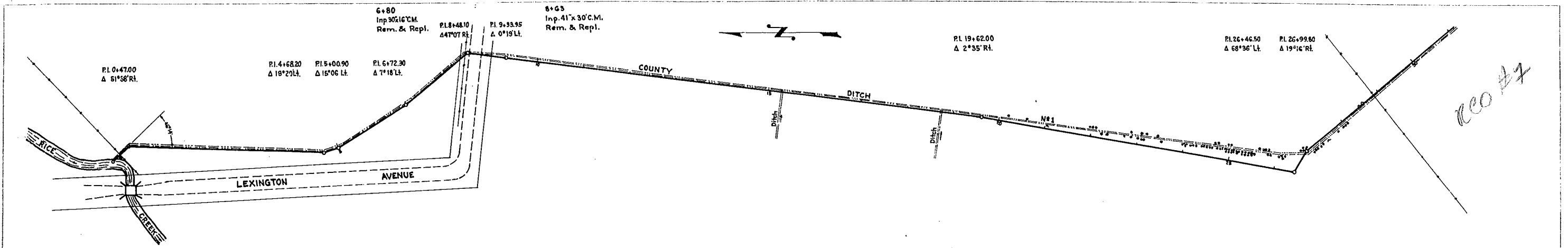
DITCH GRADES LEFT

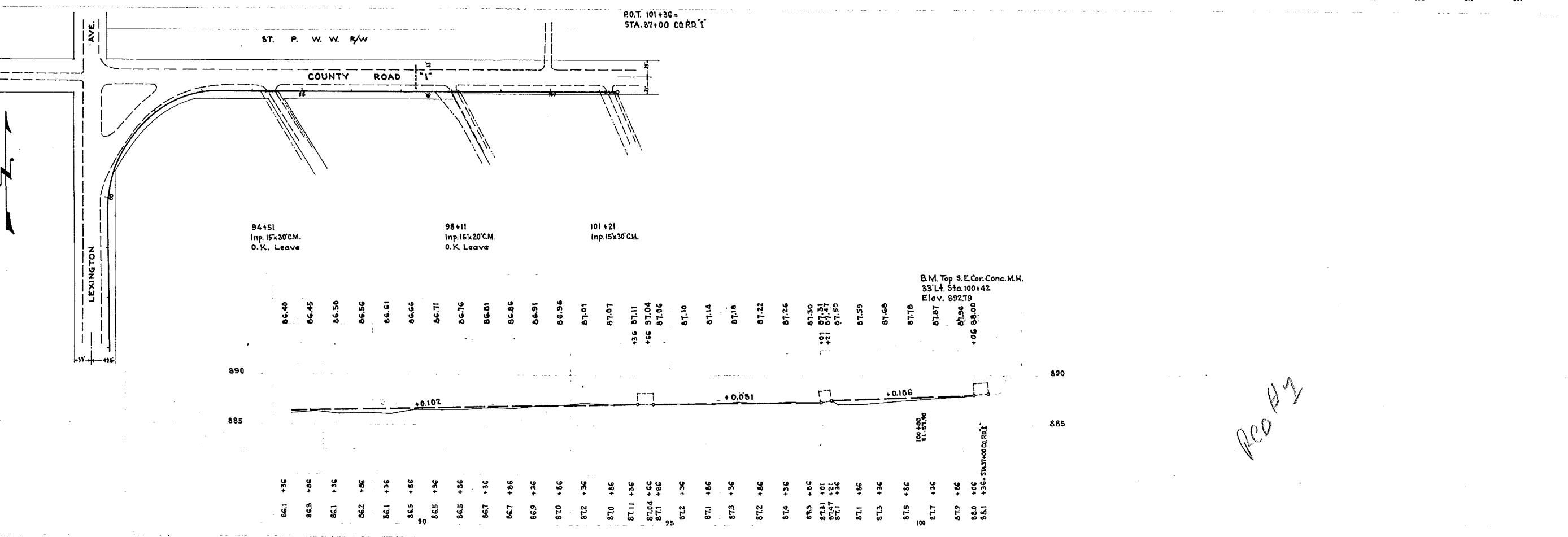
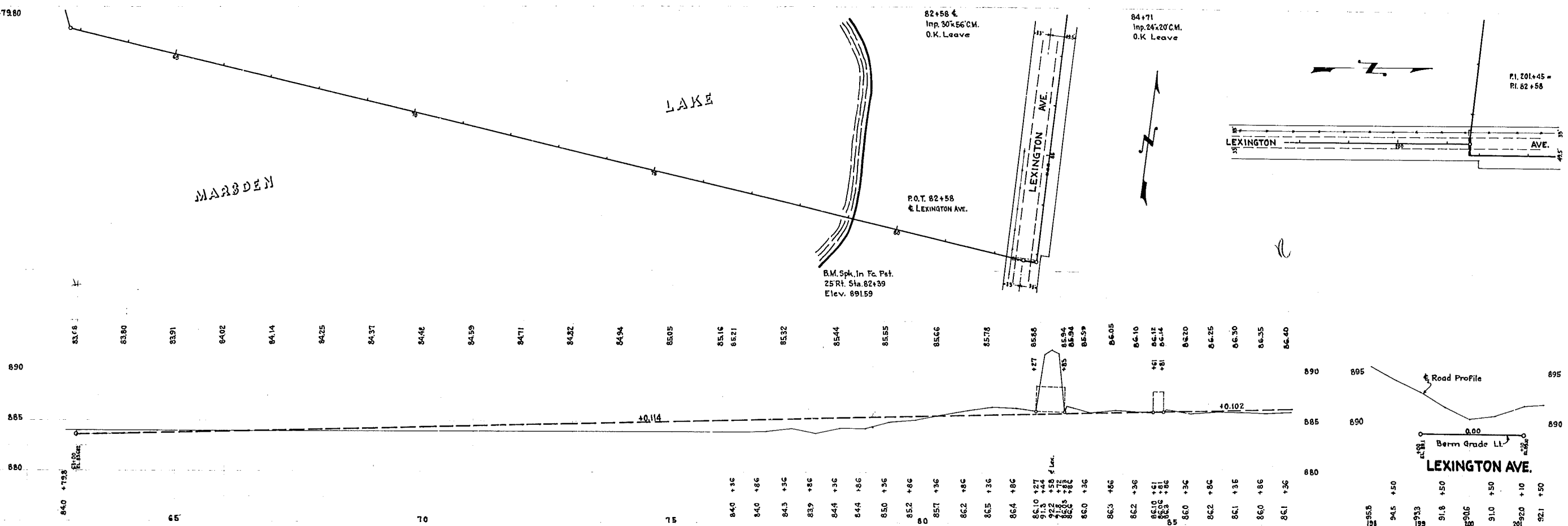
92.3 92.2 92.1 91.7 +50 91.3 91.4 +50 91.4 91.1 +50 90.9 90.4 +50 90.1 89.6 +50 89.6 90.1 +50 90.2 90.0 +50 90.5 91.2 +50 91.5 91.5 +50 91.0 90.9 +50 91.2 91.7 +50 92.0 92.4 +50 92.3 93.0 +50 93.3 93.6 +50 93.7 93.7 +50 93.4 93.4 +50 93.7 +50 93.7 93.6 93.5 +50 93.5 93.6 +50 93.5 93.5 +50 93.4 +20 93.4 +50 93.2 92.8 +50 92.5 92.8 +50 92.9 92.9 +50 92.9 92.8 +45 92.8 92.8 +50 92.7 +50 92.7 92.7 +50 92.6

53+36 RT. Imp. 15% 20' C.M.
 53+75 L. Imp. 12" W.L.P.
 54+48 RT. Imp. 12% 20' C.M.
 55+10 RT. Imp. 12% 20' C.M.
 55+21 L. Imp. 24% 48' C.M.
 55+72 RT. Imp. 12% 20' C.M.
 56+25 RT. Imp. 15% 20' C.M.
 56+92 RT. Imp. 12% 20' C.M.
 58+10 RT. Imp. 15% 20' C.M.
 59+34 RT. Imp. 15% 20' C.M.
 59+99 L. Imp. 24% 44' C.M.
 60+57 RT. Imp. 15% 20' C.M.
 61+09 RT. Imp. 15% 20' C.M.
 61+69 RT. Imp. 15% 20' C.M.
 62+28 RT. Imp. 15% 20' C.M.
 64+02 LT. Imp. 24% 22' C.M.
 65+06 L. Imp. 24% 40' C.M.
 66+24 RT. Imp. 15% 20' C.M.
 66+77 RT. Imp. 15% 20' C.M.

RED #1







PCO #1