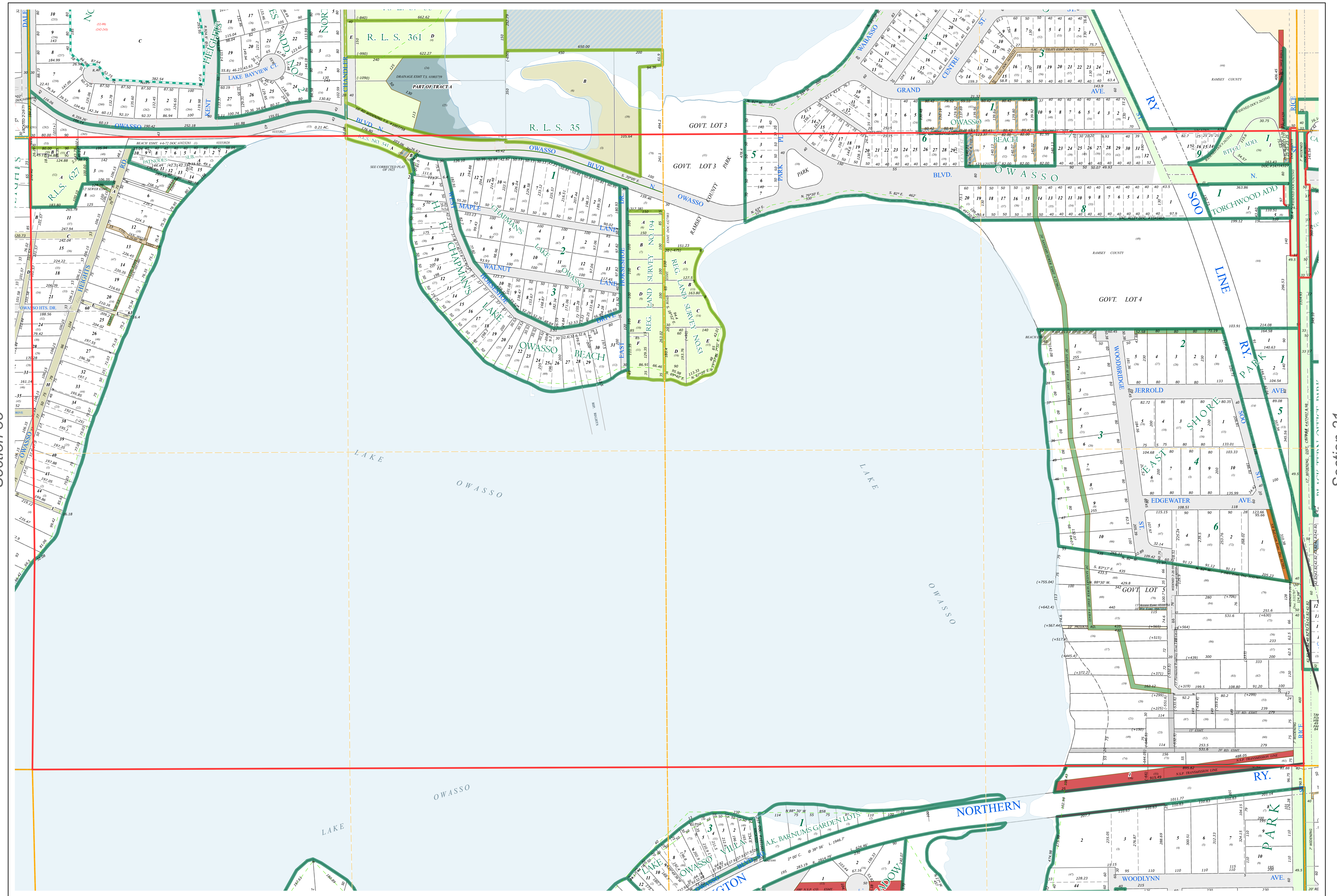
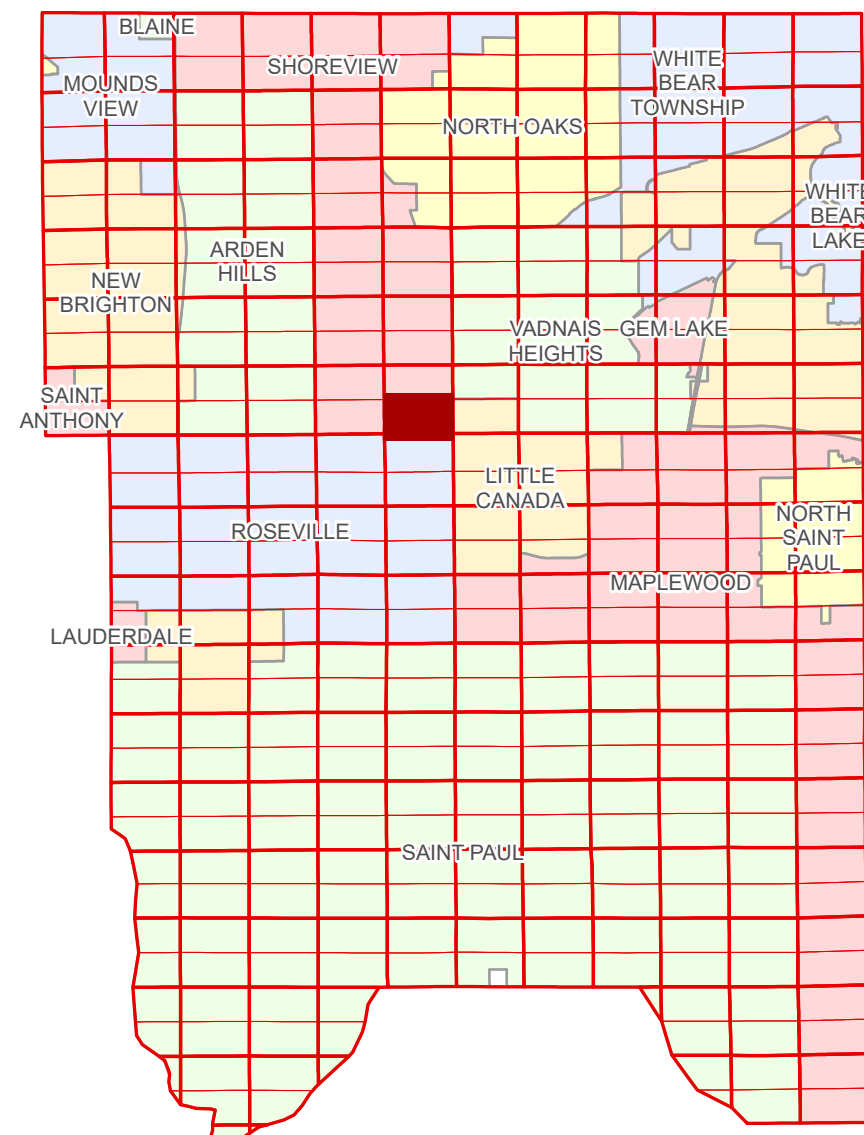


Ramsey County Minnesota Parcel Map

Ramsey County
Section 36

S Half
Section 36
T 30 N
R 23 W



Ramsey County
Section 35

Section 31
Ramsey County

Legend	
	Section
	Quarter
	Quarter Quarter
	County Right of Way
	Municipal Right of Way
	Subdivision Plat
	Registered Land Survey
	Highway RoW Plat
	Lot
	Outlot
	Tract
	Metes & Bounds
	Tax Parcel Type State Assessed Property
	Real Property
	Easement Type Pedestrian
	Private Access
	Private Driveway
	Utility, Electric
	Utility, Communication
	Utility, Storm & Sanitary Sewer
	Utility, Water
	Utility, Unidentified
	Drainage & Utility
	Drainage

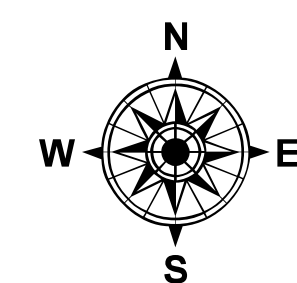
The information on this map is a compilation of Ramsey County Records. THE COUNTY DOES NOT WARRANT OR GUARANTEE THE ACCURACY OF THIS DATA. The County disclaims any liability for any injuries, time delays, or expenses you may suffer if you rely in any manner on the accuracy of this data.

NOTE: This is not an official Ramsey County tax lot map. This is based on the data available in the Geographic Information System, which may vary from tax data officially recorded in the Tax System. For an official tax map, please contact the Office of Property Records and Revenue.

Produced by Information Services Enterprise GIS Division
RCGISMetaData@Co.Ramsey.MN.US

651-266-2000
AskPropertyTaxandRecords@co.ramsey.mn.us

Section 1
Ramsey County



0 4590 180 270 360 Feet
1" = 200'
1:2,400

S363023

1/3/2025