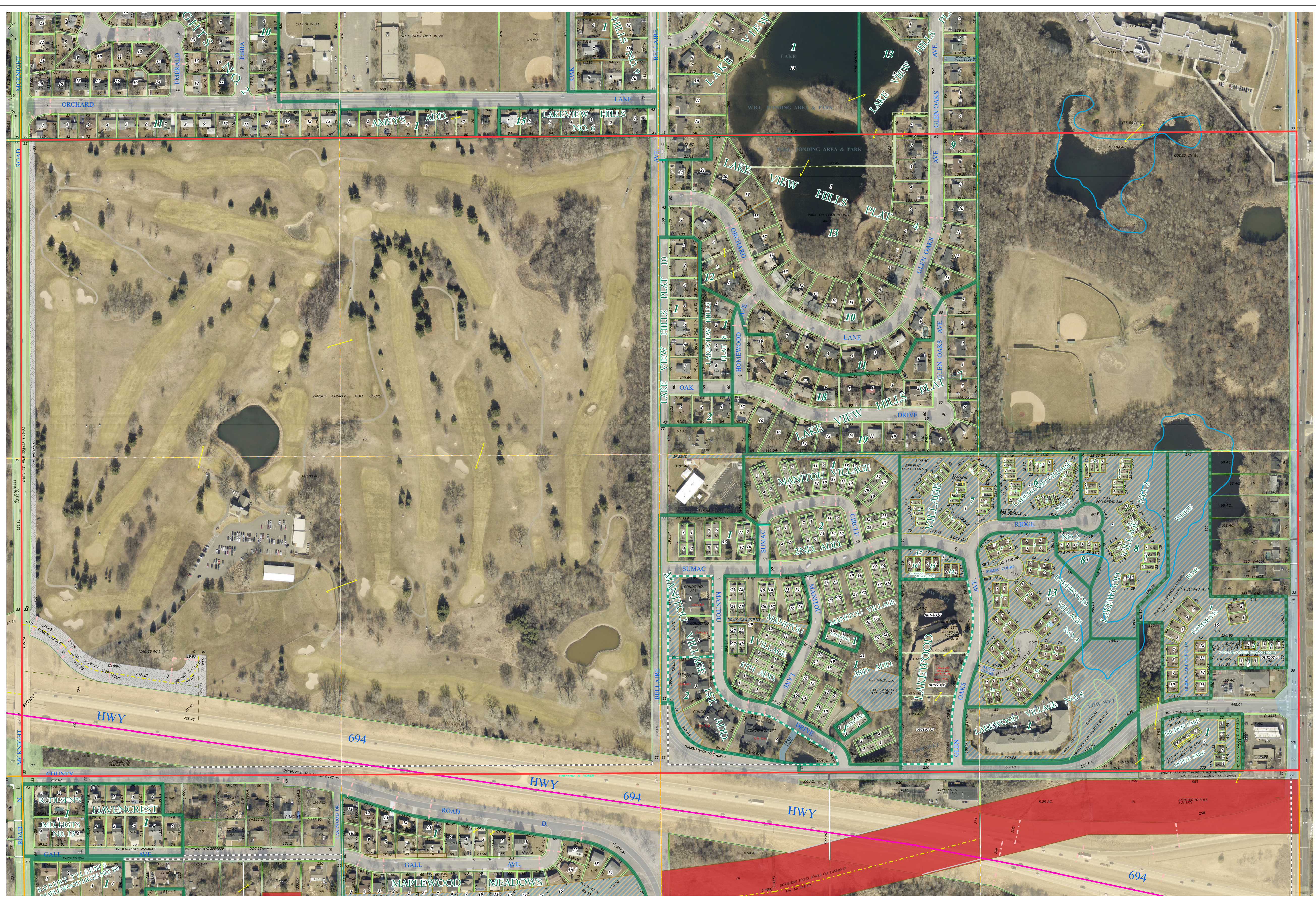
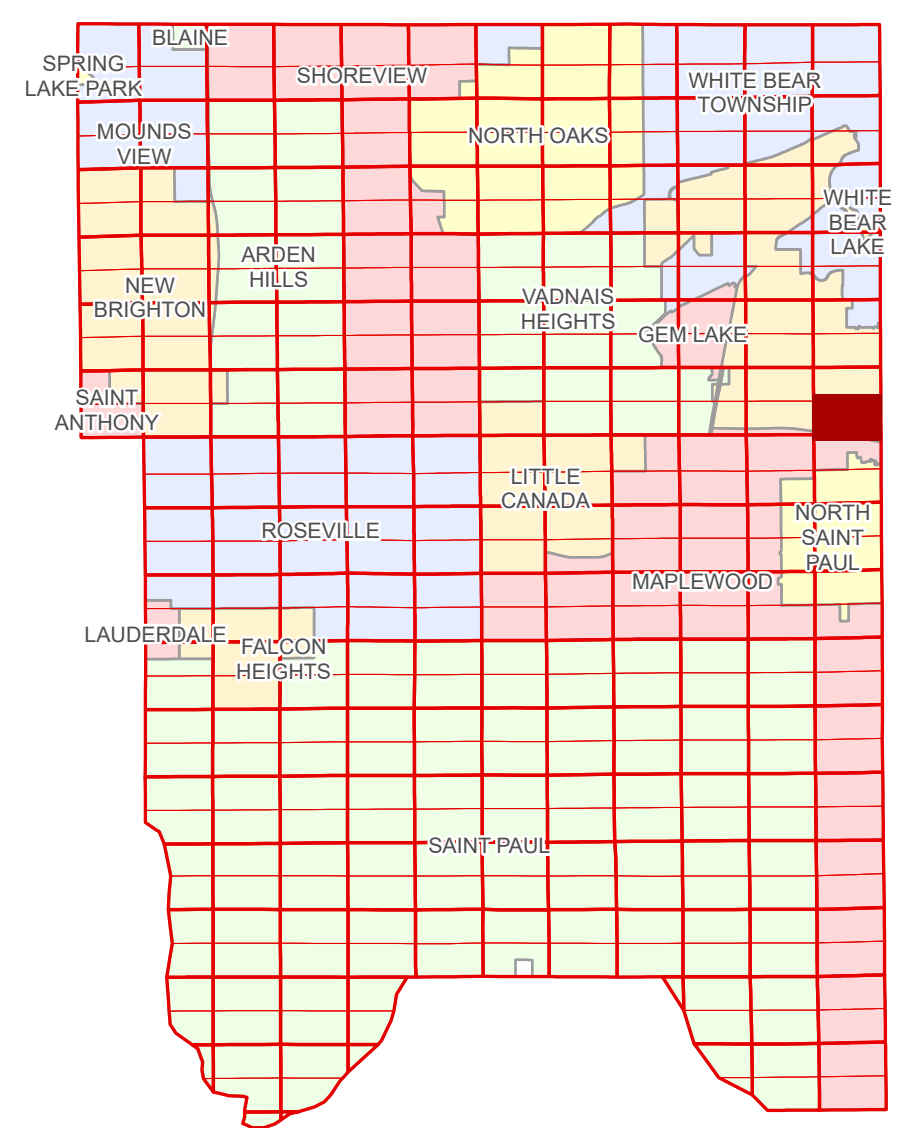


Ramsey County Minnesota Parcel Map

Ramsey County
Section 36

S Half
Section 36
T 30 N
R 22 W



Ramsey County
Section 35

Section 31
Washington County

Legend			
	Section		Division Type
	Quarter		Metes & Bounds
	Quarter Quarter		Tax Parcel Type
	Federal Right of Way		Easement Type
	State Right of Way		Utility, Storm & Sanitary Sewer
	County Right of Way		Drainage & Utility
	Municipal Right of Way		Drainage
	Subdivision Plat		Misc Easements
	Planned Community		
	Condominium		

Aerial Imagery Date: March 11 - April 4, 2024

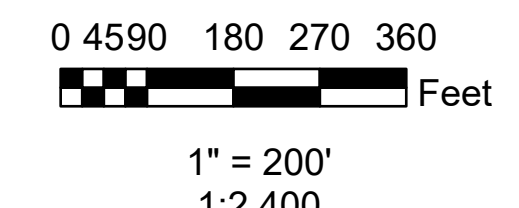
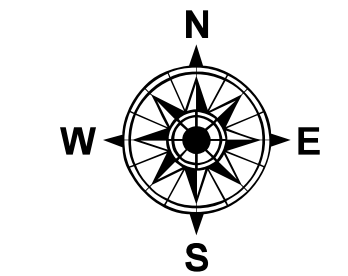
The information on this map is a compilation of Ramsey County Records. THE COUNTY DOES NOT WARRANT OR GUARANTEE THE ACCURACY OF THIS DATA. The County disclaims any liability for any injuries, time delays, or expenses you may suffer if you rely in any manner on the accuracy of this data.

Produced by Information Services Enterprise GIS Division
RCGISMetaData@Co.Ramsey.MN.US

NOTE: This is not an official Ramsey County tax lot map. This is based on the data available in the Geographic Information System, which may vary from tax data officially recorded in the Tax System. For an official tax map, please contact the Office of Property Records and Revenue.

651-266-2000
AskPropertyTaxandRecords@co.ramsey.mn.us

Section 1
Ramsey County



S363022

1/3/2025