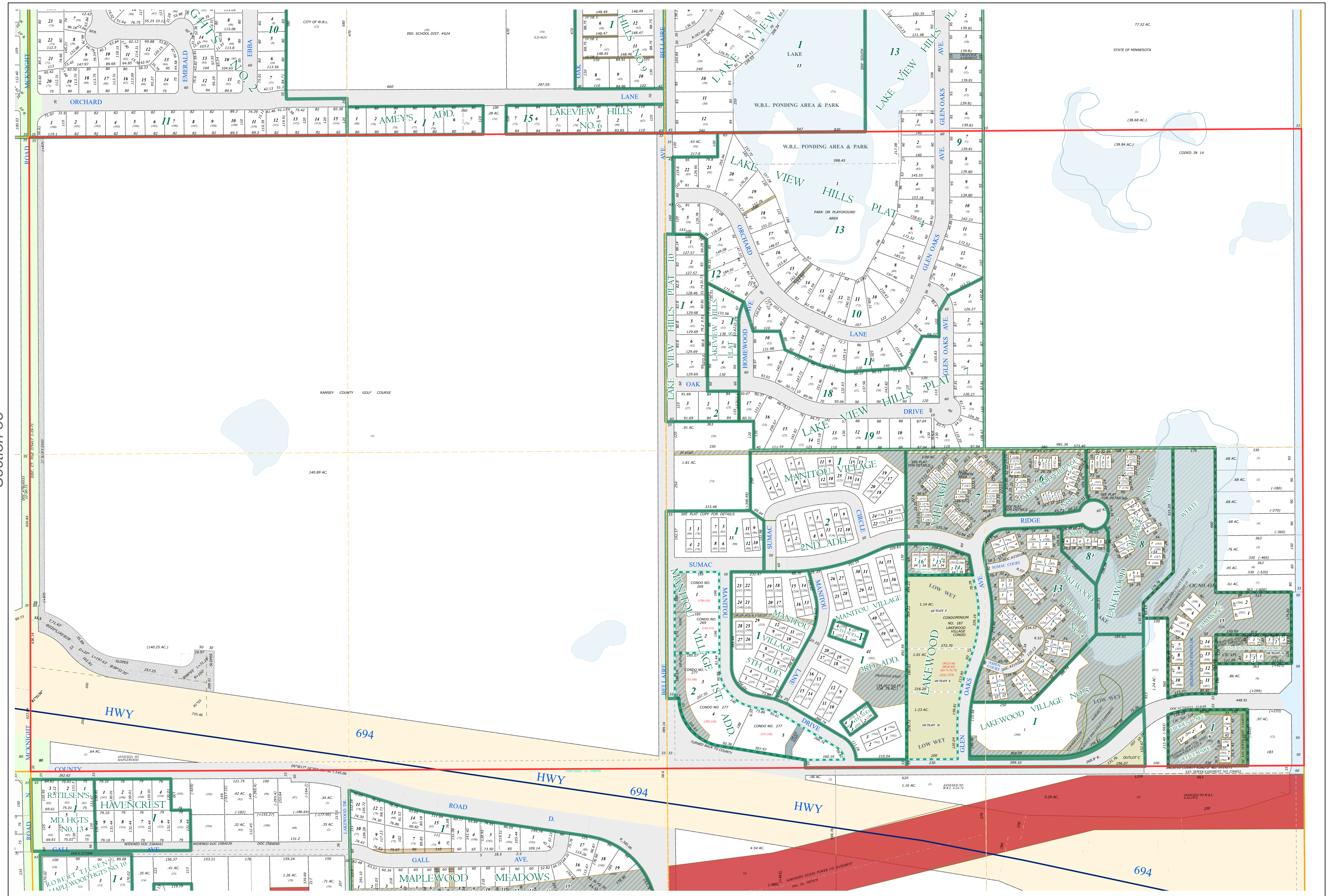
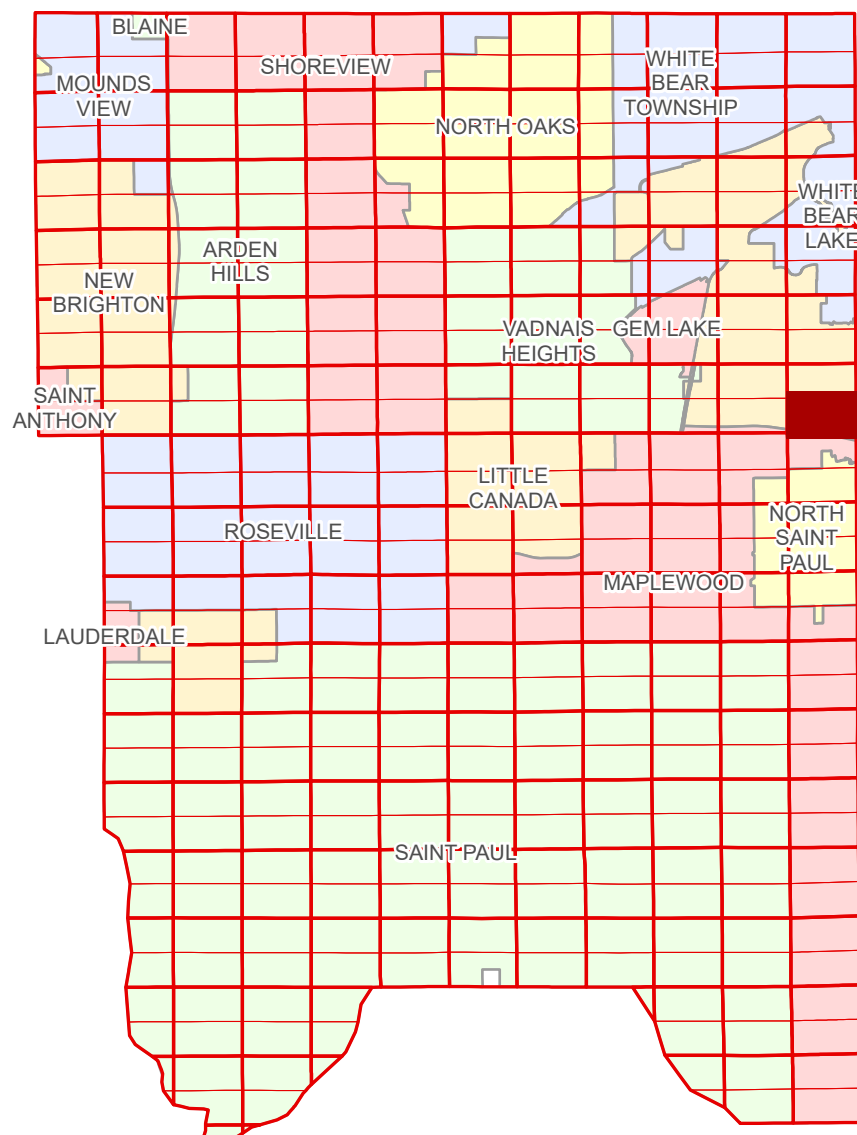


Ramsey County Minnesota Parcel Map

S Half
Section 36
T 30 N
R 22 W

Ramsey County
Section 36



Ramsey County
Section 35

Section 31
Washington County

Legend

Section	Division Type
Quarter	Lot
Quarter Quarter	Outlot
Federal Right of Way	Metes & Bounds
State Right of Way	Tax Parcel Type
County Right of Way	Real Property
Municipal Right of Way	Easement Type
Subdivision Type	Pedestrian
Subdivision Plat	Utility, Storm & Sanitary Sewer
Planned Community	Drainage & Utility
Condominium	Drainage
	Misc Easements

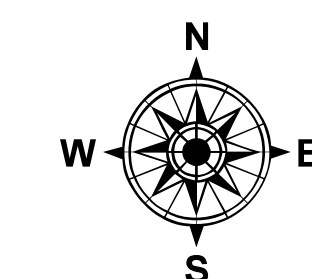
The information on this map is a compilation of Ramsey County Records. THE COUNTY DOES NOT WARRANT OR GUARANTEE THE ACCURACY OF THIS DATA. The County disclaims any liability for any injuries, time delays, or expenses you may suffer if you rely in any manner on the accuracy of this data.

Produced by Information Services Enterprise GIS Division
RCGISMetaData@Co.Ramsey.MN.US

NOTE: This is not an official Ramsey County tax lot map. This is based on the data available in the Geographic Information System, which may vary from tax data officially recorded in the Tax System. For an official tax map, please contact the Office of Property Records and Revenue.

651-266-2000
AskPropertyTaxandRecords@co.ramsey.mn.us

Section 1
Ramsey County



0 4590 180 270 360 Feet
1" = 200'
1:2,400

S363022

1/3/2025