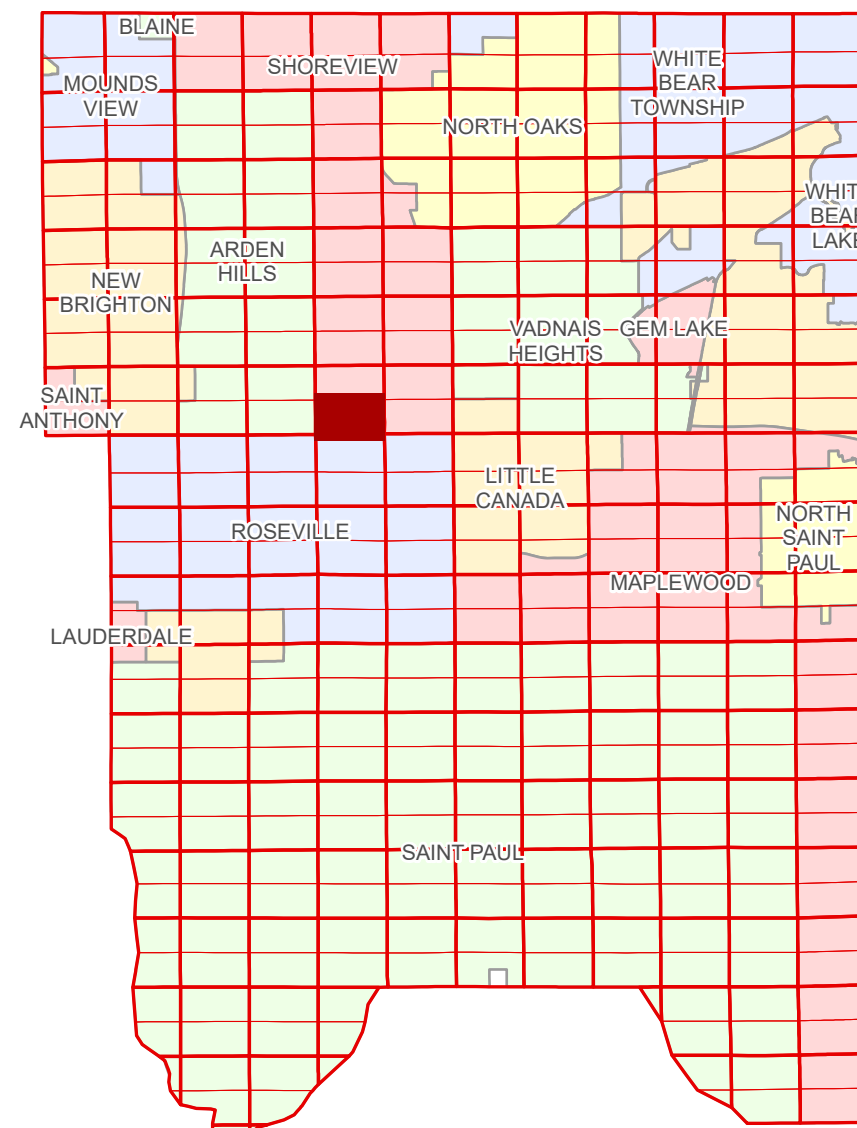


S Half
Section 35
T 30 N
R 23 W

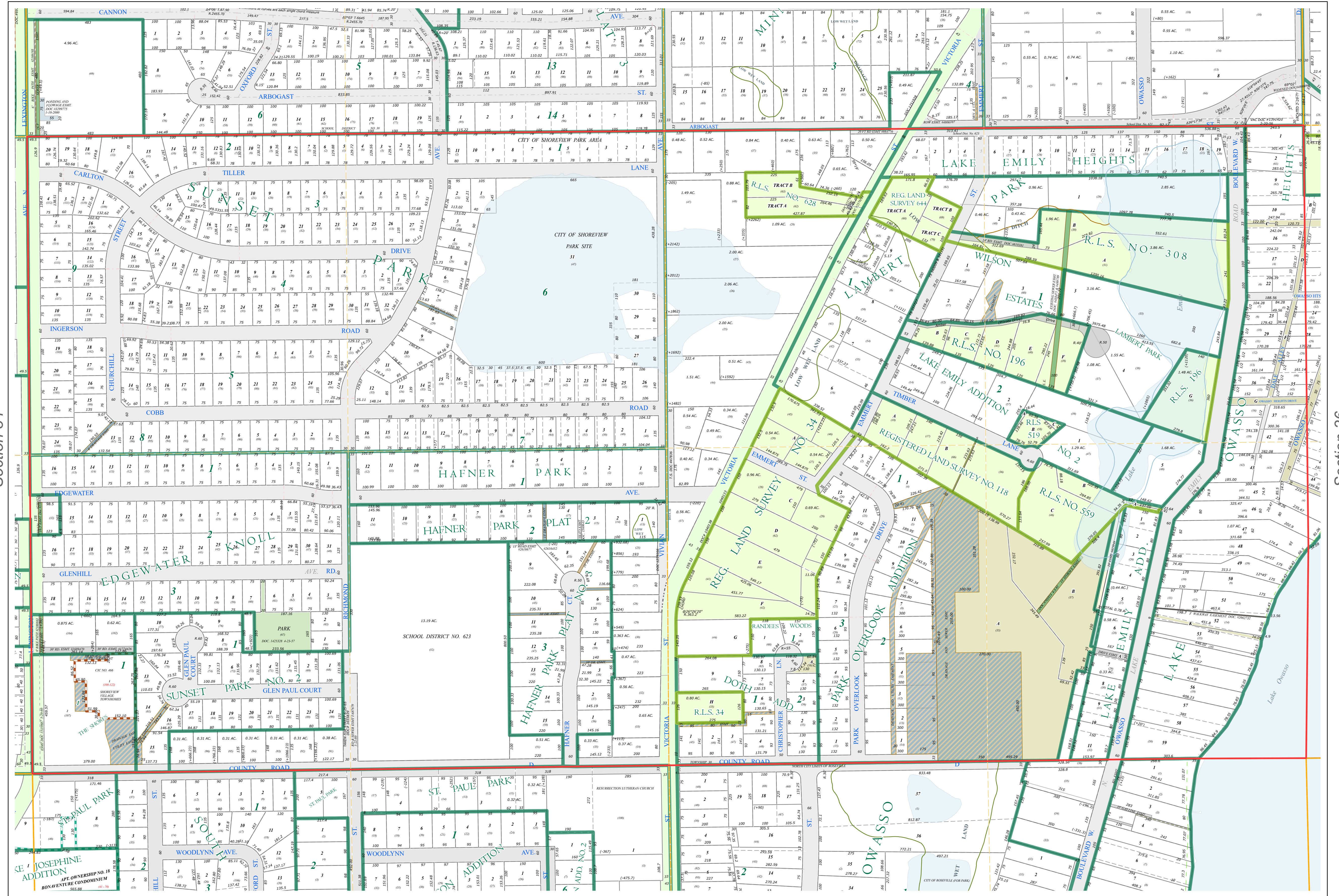
Ramsey County Minnesota Parcel Map

Ramsey County
Section 35



Ramsey County
Section 34

Section 36
Ramsey County



Legend

Section	Metes & Bounds
Quarter	Tax Parcel Type
Quarter Quarter	Real Property
County Right of Way	Easement Type
Municipal Right of Way	Pedestrian
Subdivision Type	Private Access
Subdivision Plat	Private Driveway
Registered Land Survey	Utility, Storm & Sanitary Sewer
Planned Community	Utility, Unidentified
Division Type	Drainage & Utility
Lot	Drainage
Outlot	
Park	
Tract	

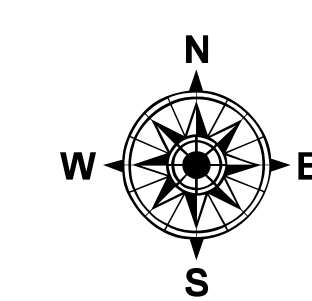
The information on this map is a compilation of Ramsey County Records. THE COUNTY DOES NOT WARRANT OR GUARANTEE THE ACCURACY OF THIS DATA. THE County disclaims any liability for any injuries, time delays, or expenses you may suffer if you rely in any manner on the accuracy of this data.

Produced by Information Services Enterprise GIS Division
RCGSMetaData@Co.Ramsey.MN.US

NOTE: This is not an official Ramsey County tax lot map. This is based on the data available in the Geographic Information System, which may vary from tax data officially recorded in the Tax System. For an official tax map, please contact the Office of Property Records and Revenue.

651-266-2000
AskPropertyTaxandRecords@co.ramsey.mn.us

Section 2
Ramsey County



0 4590 180 270 360 Feet
1" = 200'
1:2,400

S353023
1/3/2025

