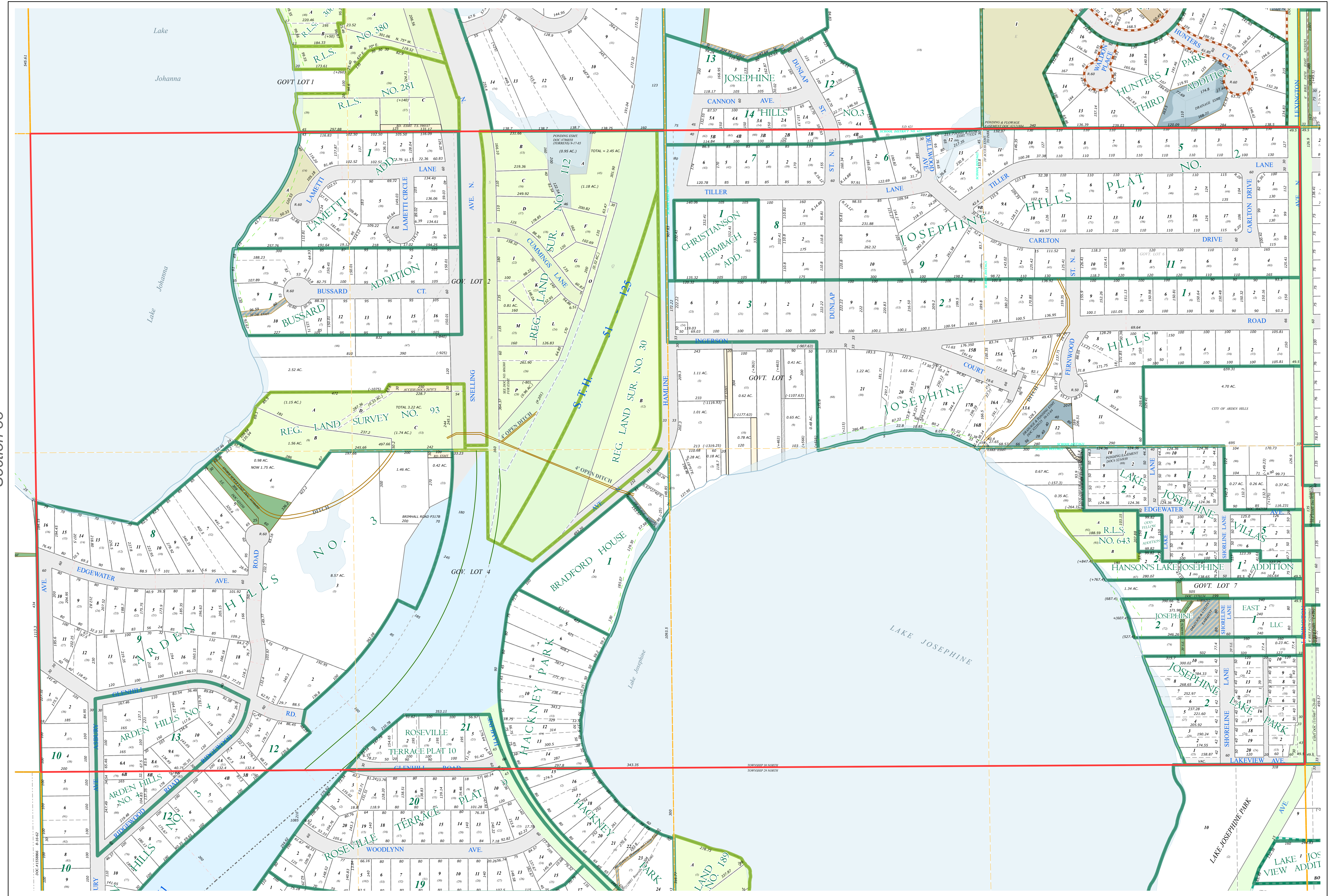
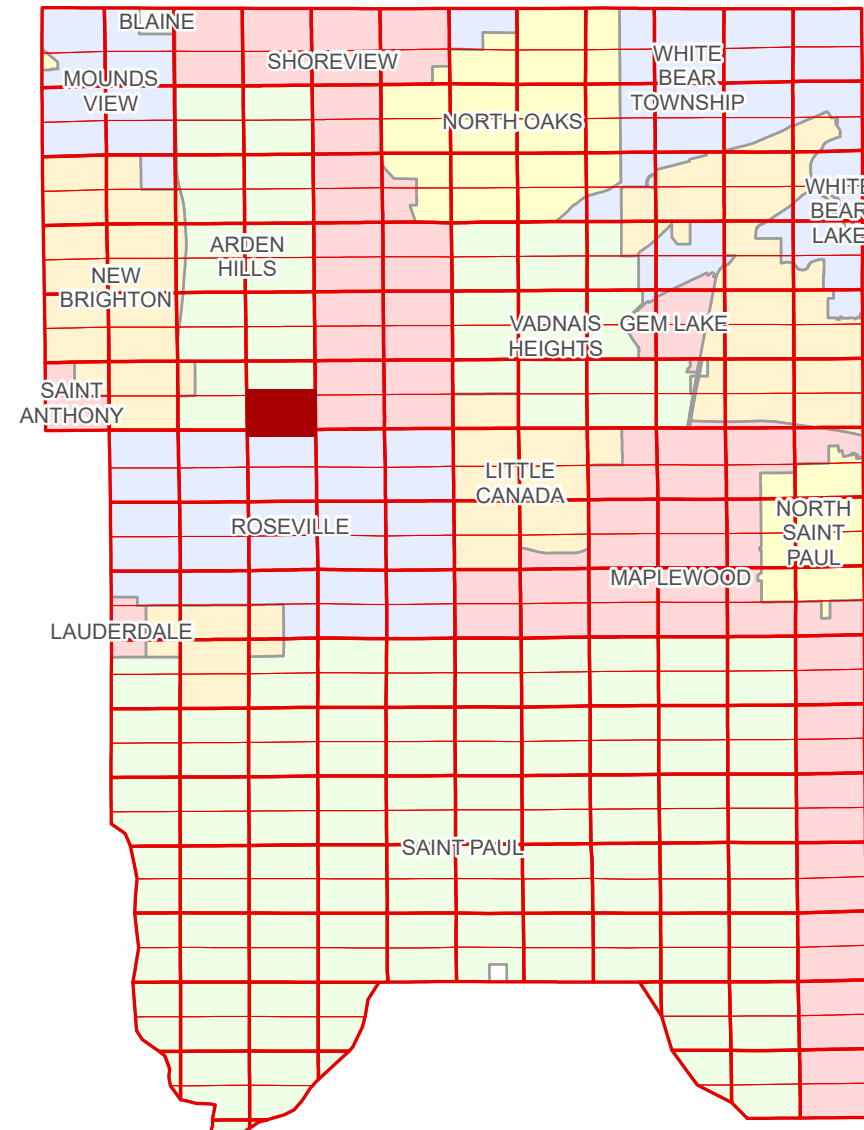


S Half
Section 34
T 30 N
R 23 W

Ramsey County Minnesota Parcel Map

Ramsey County
Section 34



Ramsey County
Section 33

Section 35
Ramsey County

| Legend | | | |
|--------|------------------------|--|---------------------------------|
| | Section | | Metes & Bounds |
| | Quarter | | Tax Parcel Type |
| | Quarter Quarter | | Real Property |
| | State Right of Way | | Easement Type |
| | County Right of Way | | Ponding |
| | Municipal Right of Way | | Private Access |
| | Subdivision Type | | Private Driveway |
| | Subdivision Plat | | Utility, Storm & Sanitary Sewer |
| | Registered Land Survey | | Utility, Unidentified |
| | Planned Community | | Drainage & Utility |
| | Division Type | | Drainage |
| | Lot | | Misc Easements |
| | Outlot | | |
| | Tract | | |

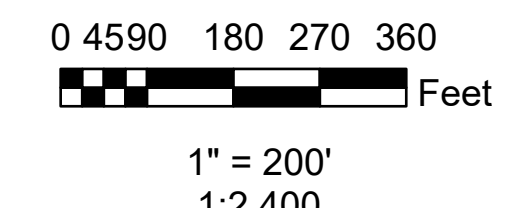
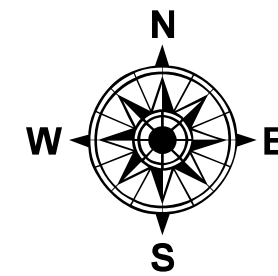
The information on this map is a compilation of Ramsey County Records. THE COUNTY DOES NOT WARRANT OR GUARANTEE THE ACCURACY OF THIS DATA. The County disclaims any liability for any injuries, time delays, or expenses you may suffer if you rely in any manner on the accuracy of this data.

Produced by Information Services Enterprise GIS Division
RCGSMetaData@Co.Ramsey.MN.US

NOTE: This is not an official Ramsey County tax lot map. This is based on the data available in the Geographic Information System, which may vary from tax data officially recorded in the Tax System. For an official tax map, please contact the Office of Property Records and Revenue.

651-266-2000
AskPropertyTaxandRecords@co.ramsey.mn.us

Section 3
Ramsey County



S343023
1/3/2025