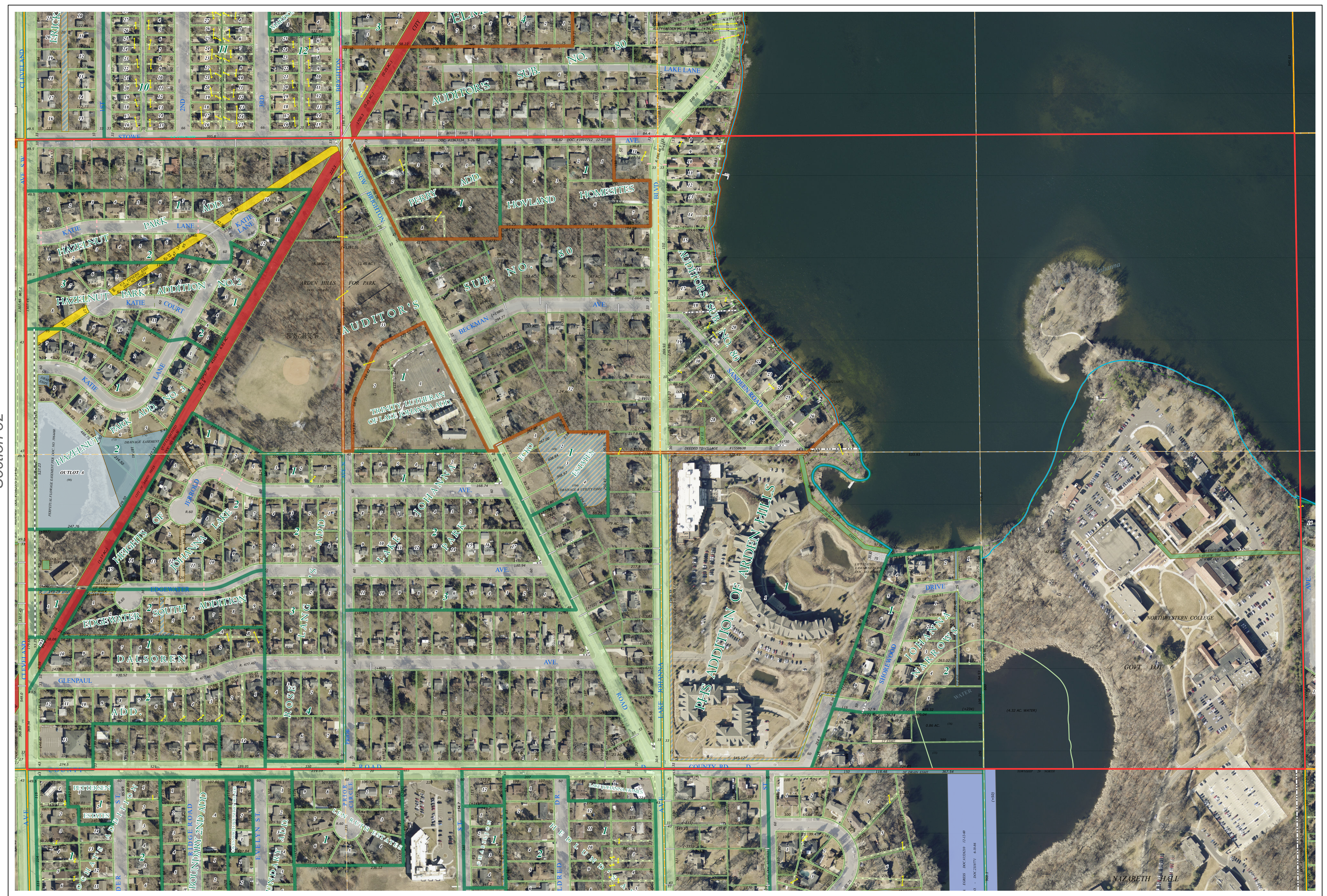
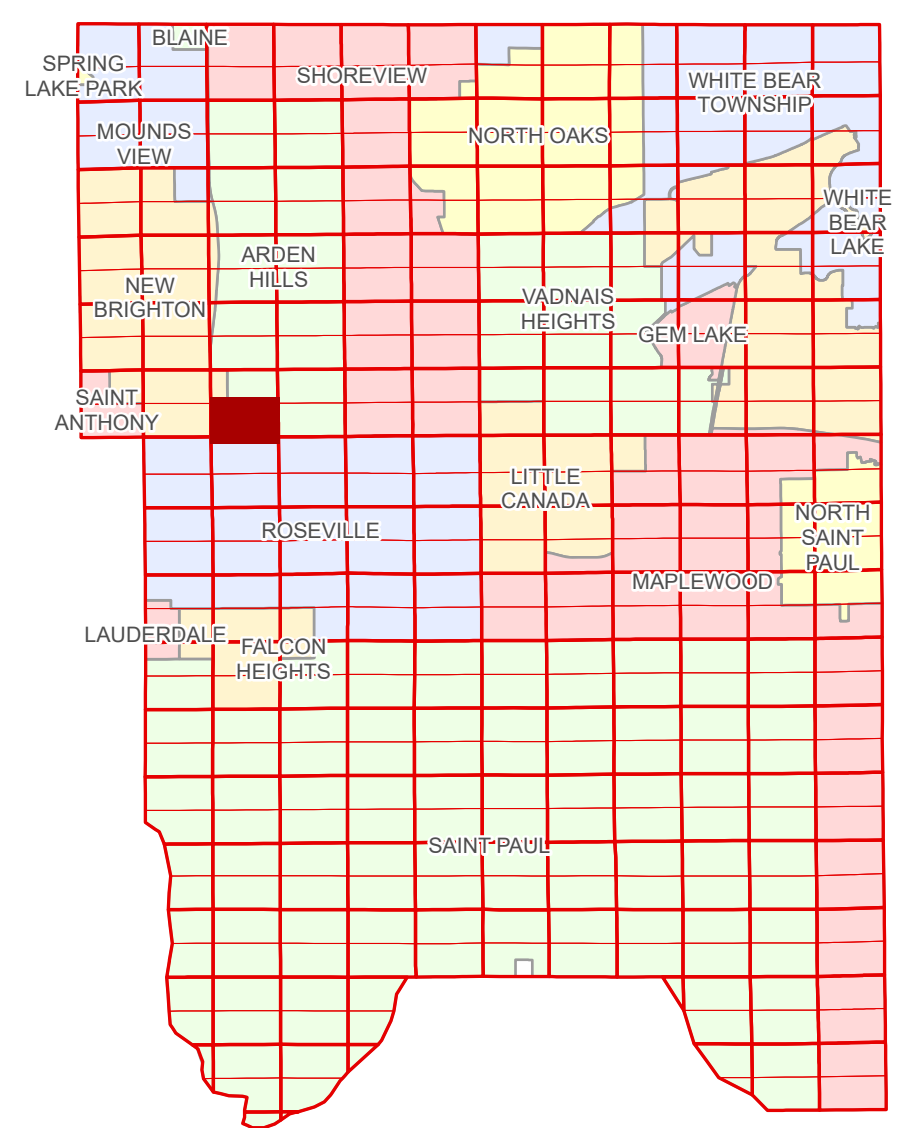


# Ramsey County Minnesota Parcel Map

S Half  
Section 33  
T 30 N  
R 23 W

Ramsey County  
Section 33



Ramsey County  
Section 32

Section 34  
Ramsey County

**Legend**

Section	Easement Type
Quarter	Ponding
Quarter Quarter	Pedestrian
County Right of Way	Private Access
Municipal Right of Way	Utility, Electric
Subdivision Type	Utility, Gas & Oil
Subdivision Plat	Utility, Storm & Sanitary Sewer
Auditor's Subdivision	Utility, Unidentified
Division Type	Drainage & Utility
Lot	Drainage
Metes & Bounds	Misc Easements
Tax Parcel Type	
Real Property	

Aerial Imagery Date: March 11 - April 4, 2024



The information on this map is a compilation of Ramsey County Records. THE COUNTY DOES NOT WARRANT OR GUARANTEE THE ACCURACY OF THIS DATA. The County disclaims any liability for any injuries, time delays, or expenses you may suffer if you rely in any manner on the accuracy of this data.

Produced by Information Services Enterprise GIS Division  
RCGISMetaData@Co.Ramsey.MN.US

NOTE: This is not an official Ramsey County tax lot map. This is based on the data available in the Geographic Information System, which may vary from tax data officially recorded in the Tax System. For an official tax map, please contact the Office of Property Records and Revenue.

651-266-2000  
AskPropertyTaxandRecords@co.ramsey.mn.us

Section 4  
Ramsey County



**S333023**  
1/3/2025