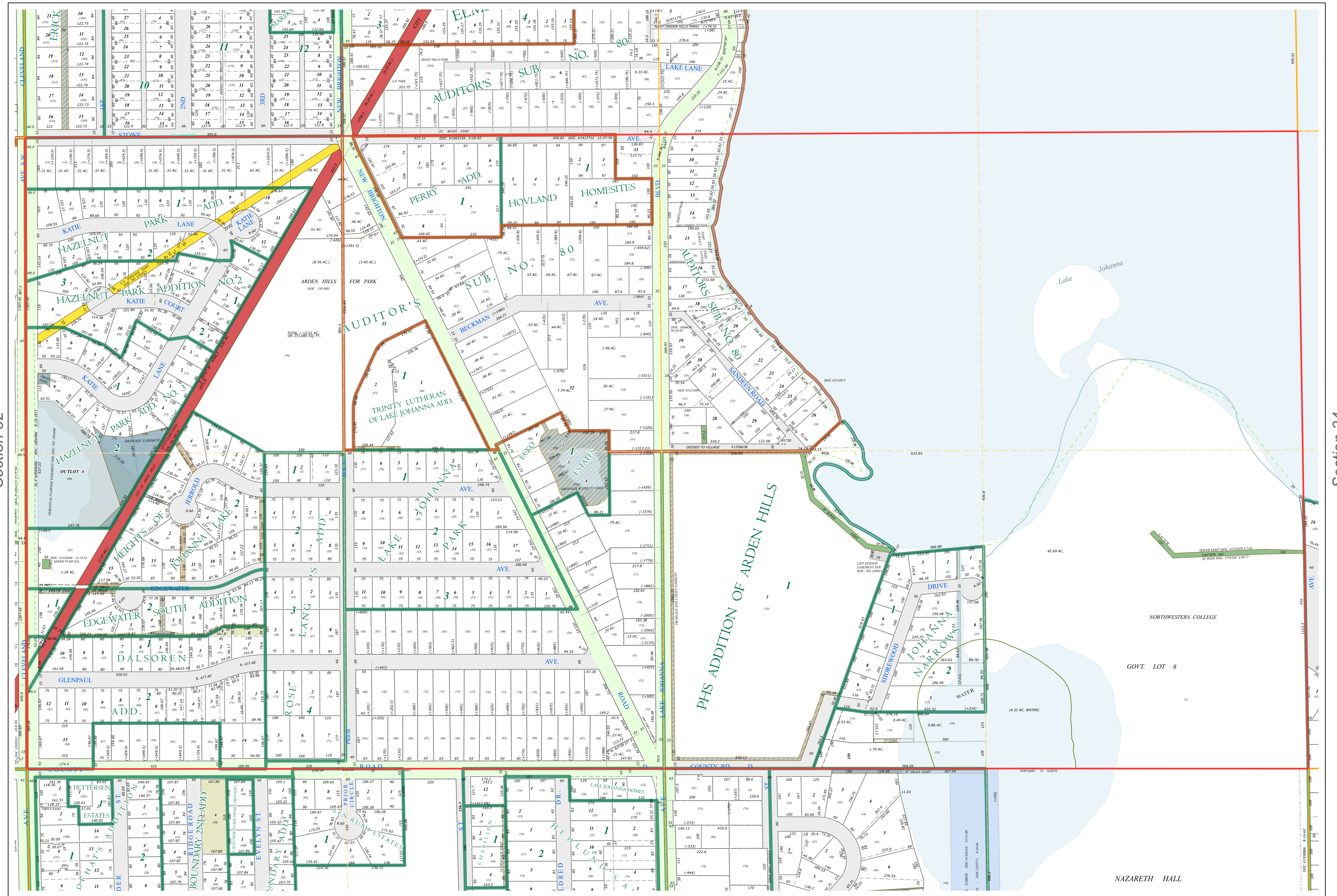
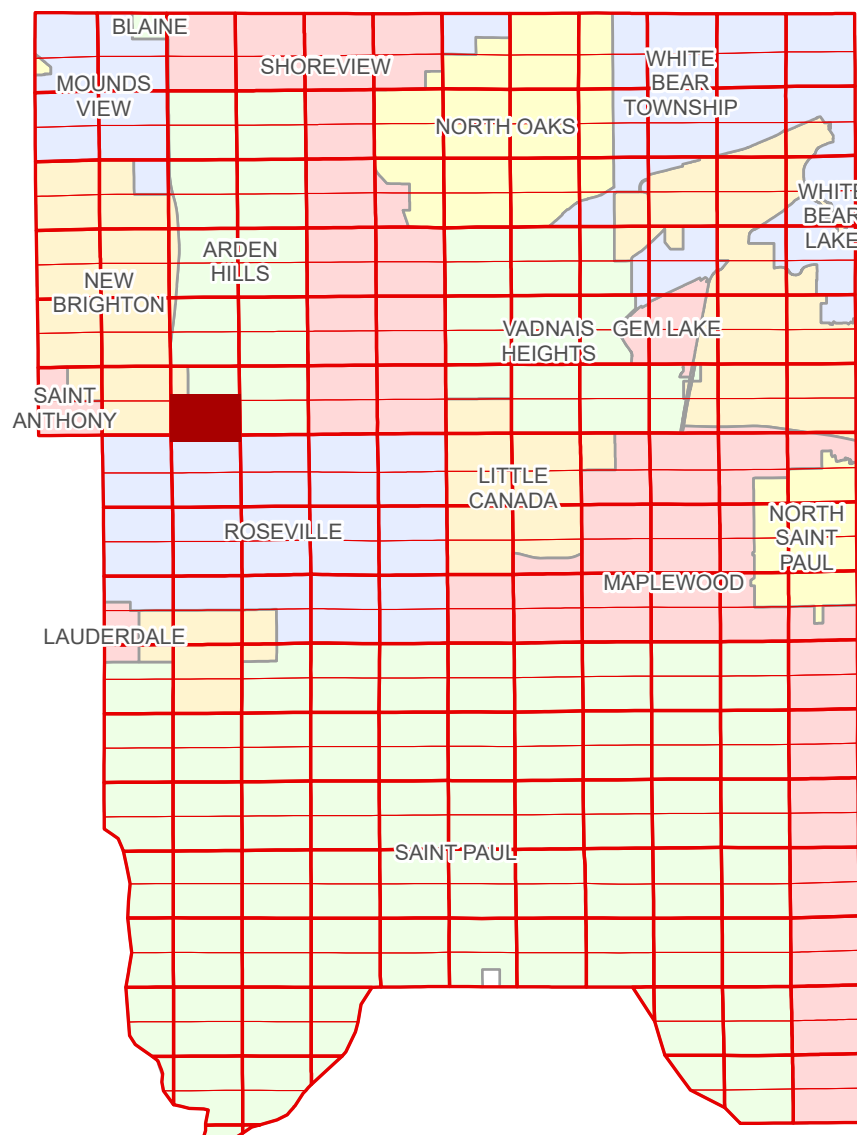


S Half  
Section 33  
T 30 N  
R 23 W

# Ramsey County Minnesota Parcel Map

Ramsey County  
Section 33



Ramsey County  
Section 32

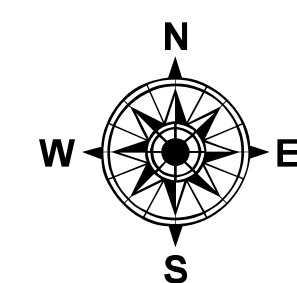
Section 34  
Ramsey County

Legend			
	Section		Real Property
	Quarter		Easement Type
	Quarter Quarter		Ponding
	County Right of Way		Pedestrian
	Municipal Right of Way		Private Access
	Subdivision Type		Utility, Electric
	Auditor's Subdivision		Utility, Gas & Oil
	Division Type		Utility, Storm & Sanitary Sewer
	Lot		Utility, Unidentified
	Outlot		Drainage & Utility
	Metes & Bounds		Drainage
			Misc Easements

The information on this map is a compilation of Ramsey County Records. THE COUNTY DOES NOT WARRANT OR GUARANTEE THE ACCURACY OF THIS DATA. The County disclaims any liability for any injuries, time delays, or expenses you may suffer if you rely in any manner on the accuracy of this data.  
Produced by Information Services Enterprise GIS Division  
RCGISMetaData@Co.Ramsey.MN.US

NOTE: This is not an official Ramsey County tax lot map. This is based on the data available in the Geographic Information System, which may vary from tax data officially recorded in the Tax System. For an official tax map, please contact the Office of Property Records and Revenue.  
651-266-2000  
AskPropertyTaxandRecords@co.ramsey.mn.us

Section 4  
Ramsey County



0 4590 180 270 360 Feet

1" = 200'

1:2,400

S333023

1/3/2025