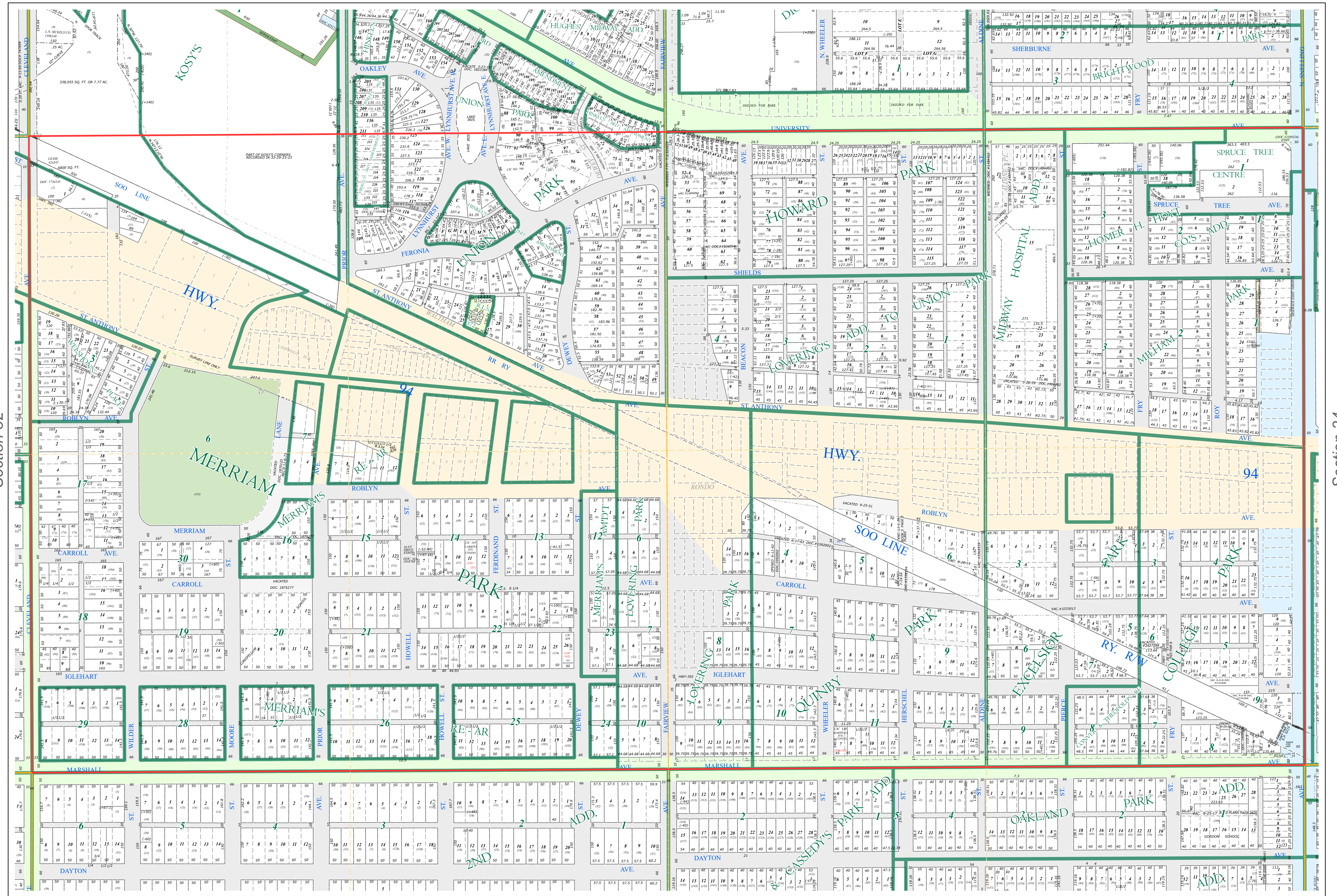
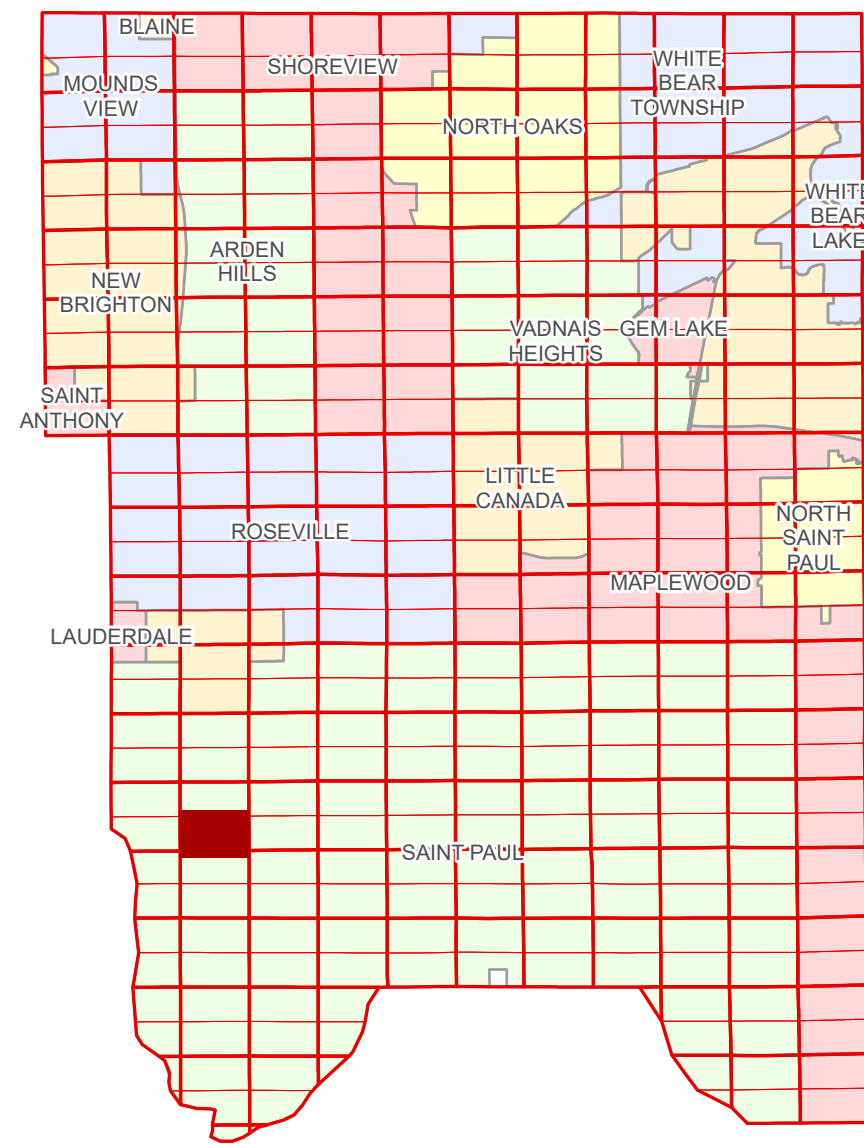


S Half  
Section 33  
T 29 N  
R 23 W

# Ramsey County Minnesota Parcel Map

Ramsey County  
Section 33



**Legend**

Section	<b>Division Type</b>
Quarter	Lot
Quarter Quarter	Other
Federal Right of Way	Park
State Right of Way	Tract
County Right of Way	Metes & Bounds
Municipal Right of Way	<b>Tax Parcel Type</b>
<b>Subdivision Type</b>	Personal Property
Subdivision Plat	State Assessed Property
Registered Land Survey	Real Property
	<b>Easement Type</b>
	Pedestrian
	Private Access
	Private Driveway

The information on this map is a compilation of Ramsey County Records. THE COUNTY DOES NOT WARRANT OR GUARANTEE THE ACCURACY OF THIS DATA. The County disclaims any liability for any injuries, time delays, or expenses you may suffer if you rely in any manner on the accuracy of this data.

Produced by Information Services Enterprise GIS Division  
RCGISMData@Co.Ramsey.MN.US

NOTE: This is not an official Ramsey County tax lot map. This is based on the data available in the Geographic Information System, which may vary from tax data officially recorded in the Tax System. For an official tax map, please contact the Office of Property Records and Revenue.

651-266-2000  
AskPropertyTaxandRecords@co.ramsey.mn.us

Section 4  
Ramsey County

N  
W E  
S

0 4590 180 270 360 Feet

1" = 200'  
1:2,400

S332923  
1/3/2025