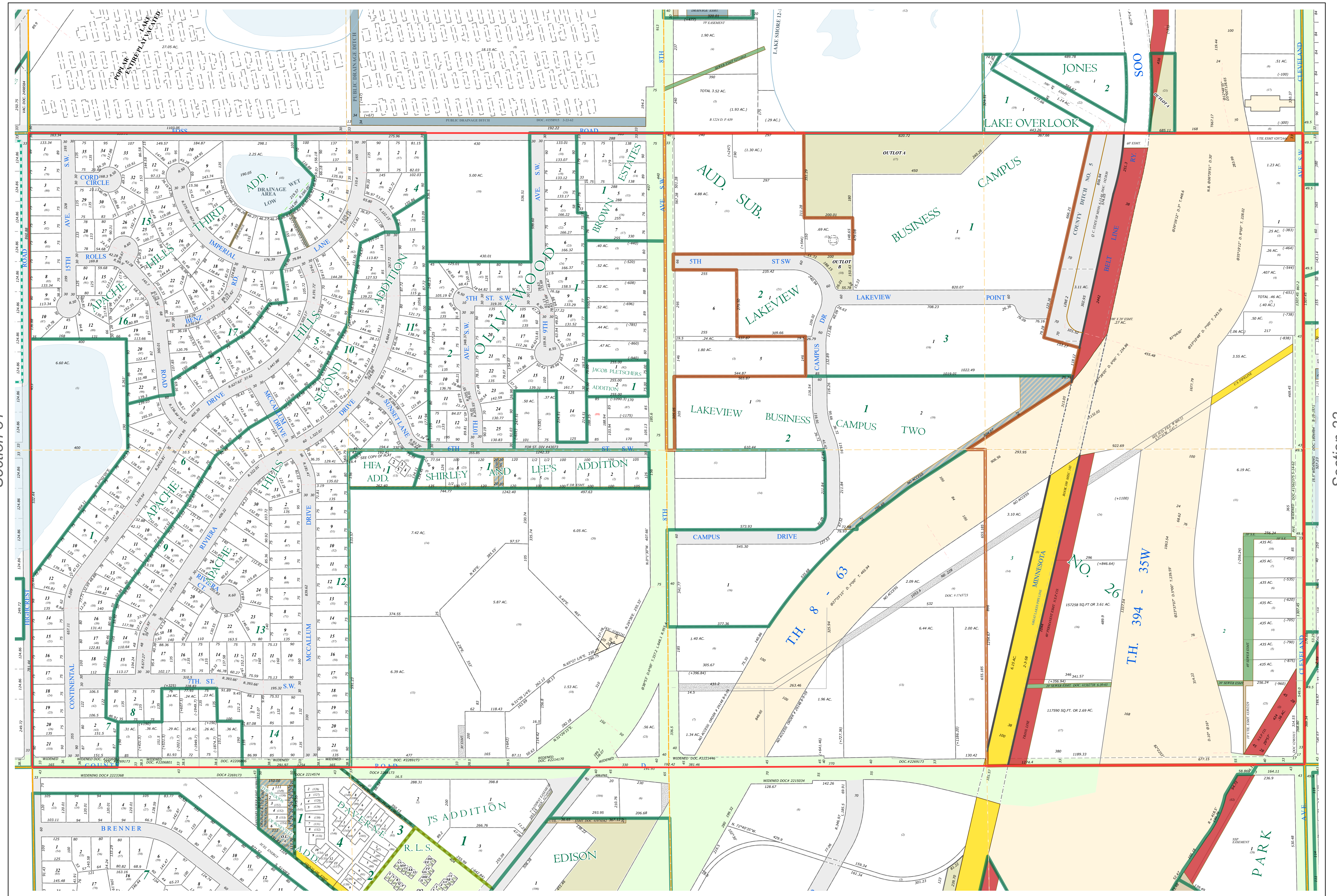
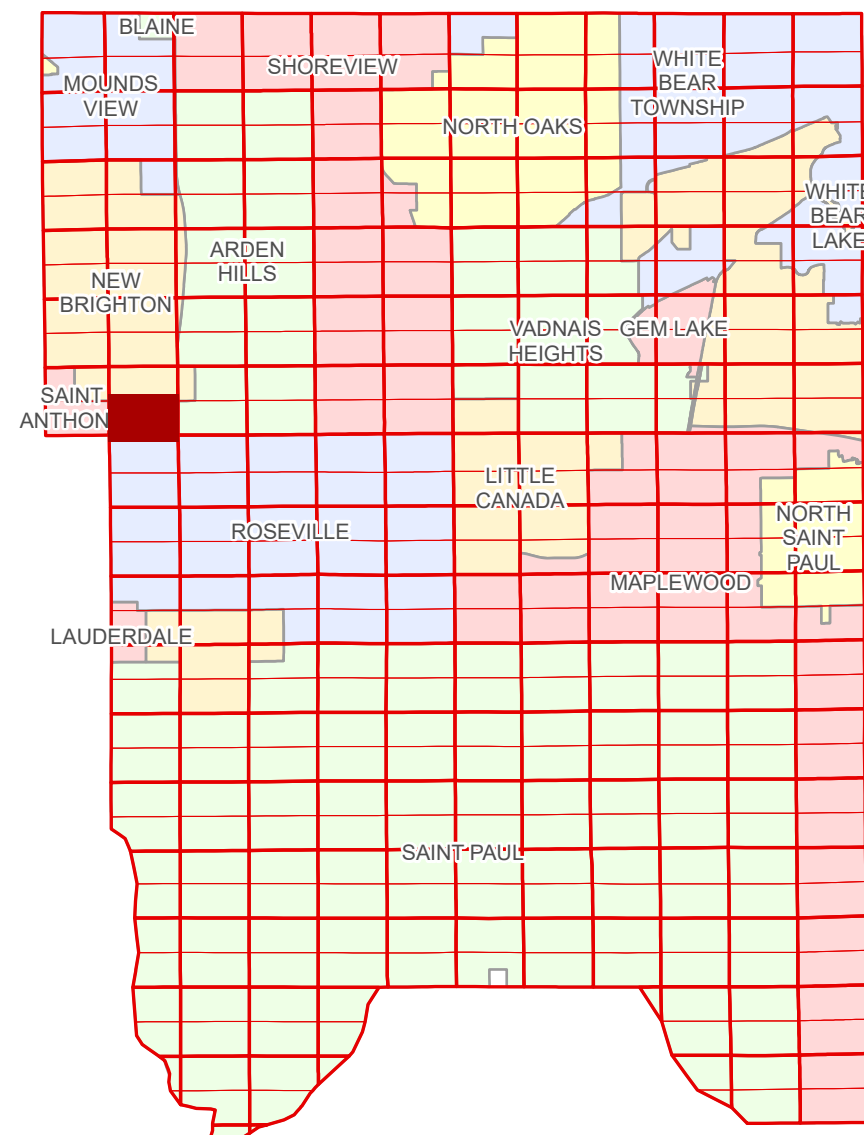


S Half
Section 32
T 30 N
R 23 W

Ramsey County Minnesota Parcel Map

Ramsey County
Section 32



Ramsey County
Section 31

Section 33
Ramsey County

Legend	
	Section
	Quarter
	Quarter Quarter
	Federal Right of Way
	County Right of Way
	Municipal Right of Way
	Subdivision Type Subdivision Plat Auditors's Subdivision
	Division Type Lot Outlot Metes & Bounds
	Tax Parcel Type Personal Property State Assessed Property Real Property
	Easement Type Private Access Utility, Electric Utility, Gas & Oil Utility, Communication Utility, Storm & Sanitary Sewer Utility, Unidentified Drainage & Utility Drainage Misc Easements

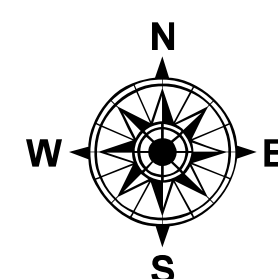
The information on this map is a compilation of Ramsey County Records. THE COUNTY DOES NOT WARRANT OR GUARANTEE THE ACCURACY OF THIS DATA. The County disclaims any liability for any injuries, time delays, or expenses you may suffer if you rely in any manner on the accuracy of this data.

NOTE: This is not an official Ramsey County tax lot map. This is based on the data available in the Geographic Information System, which may vary from tax data officially recorded in the Tax System. For an official tax map, please contact the Office of Property Records and Revenue.

Produced by Information Services Enterprise GIS Division
RCGISMetaData@Co.Ramsey.MN.US

651-266-2000
AskPropertyTaxandRecords@co.ramsey.mn.us

Section 5
Ramsey County



0 450 180 270 360 Feet
1" = 200'
1:2,400

S323023

1/3/2025