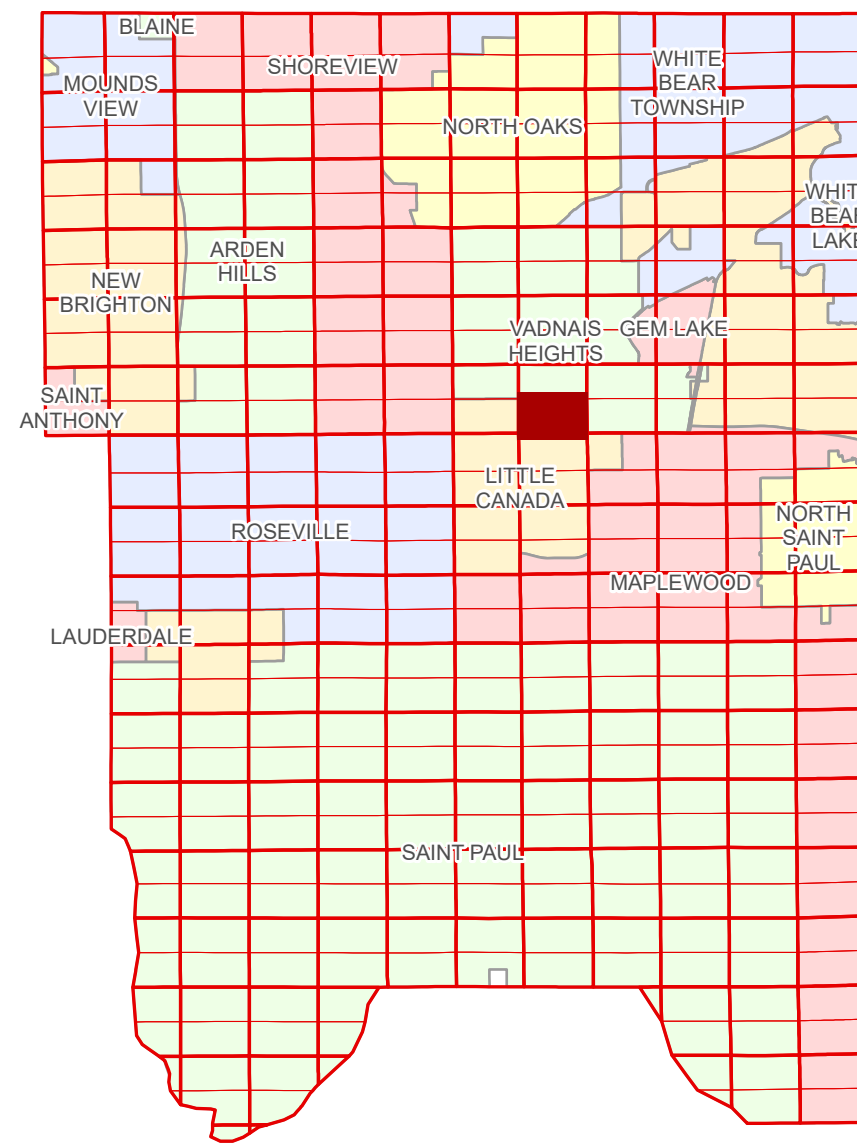


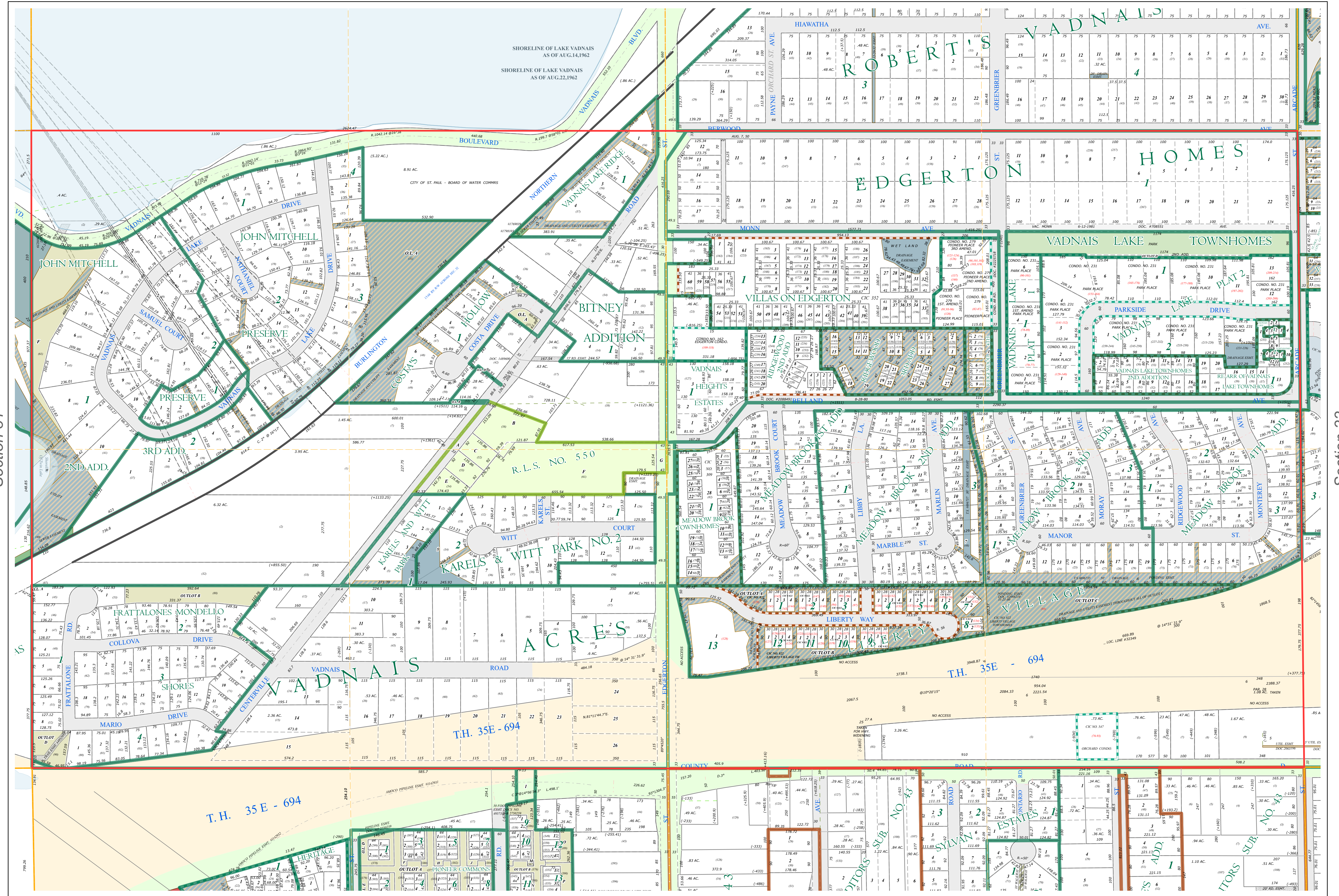
S Half  
Section 32  
T 30 N  
R 22 W

# Ramsey County Minnesota Parcel Map

Ramsey County  
Section 32



Ramsey County  
Section 31



Section 33  
Ramsey County

**Legend**

Section	<b>Division Type</b>
Quarter	Lot
Quarter Quarter	Outlot
Federal Right of Way	Park
County Right of Way	Tract
Municipal Right of Way	Metes & Bounds
<b>Subdivision Type</b>	<b>Tax Parcel Type</b>
Subdivision Plat	State Assessed Property
Registered Land Survey	Real Property
Auditors's Subdivision	<b>Easement Type</b>
Planned Community	Utility, Storm & Sanitary Sewer
Condominium	Utility, Unidentified
	Drainage & Utility
	Drainage
	Misc Easements

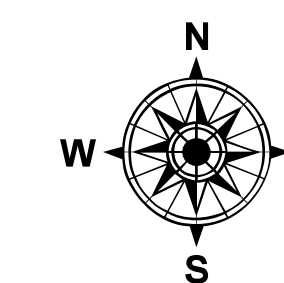
The information on this map is a compilation of Ramsey County Records. THE COUNTY DOES NOT WARRANT OR GUARANTEE THE ACCURACY OF THIS DATA. The County disclaims any liability for any injuries, time delays, or expenses you may suffer if you rely in any manner on the accuracy of this data.

NOTE: This is not an official Ramsey County tax lot map. This is based on the data available in the Geographic Information System, which may vary from tax data officially recorded in the Tax System. For an official tax map, please contact the Office of Property Records and Revenue.

Produced by Information Services Enterprise GIS Division  
RCGSMetaData@Co.Ramsey.MN.US

651-266-2000  
AskPropertyTaxandRecords@co.ramsey.mn.us

Section 5  
Ramsey County



0 4590 180 270 360  
Feet

1" = 200'

1:2,400

S323022

1/3/2025