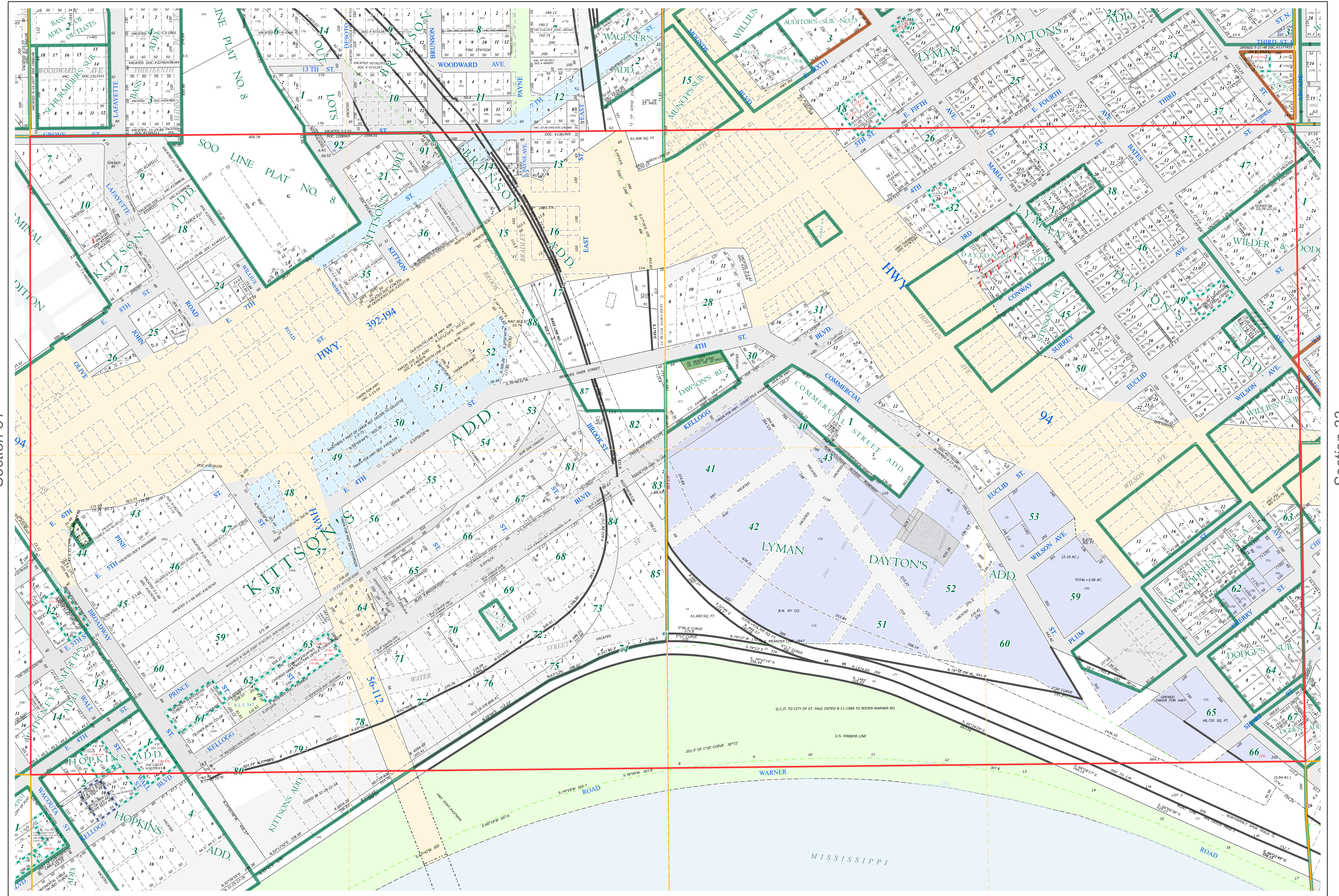
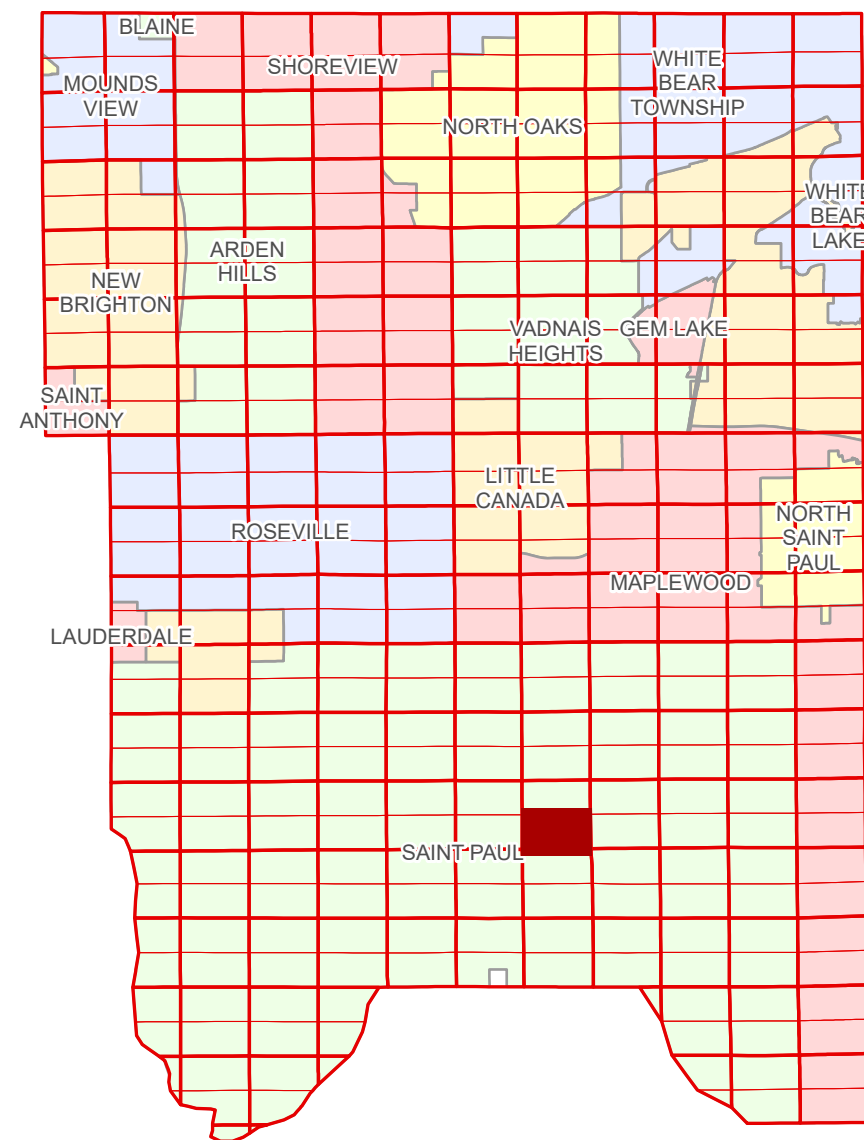


S Half  
Section 32  
T 29 N  
R 22 W

# Ramsey County Minnesota Parcel Map

Ramsey County  
Section 32



Ramsey County  
Section 31

Section 33  
Ramsey County

Legend			
	Section		Division Type
	Quarter		Lot
	Quarter Quarter		Other
	Federal Right of Way		Tract
	State Right of Way		Metes & Bounds
	County Right of Way		Tax Parcel Type
	Municipal Right of Way		Personal Property
	Subdivision Type		State Assessed Property
	Subdivision Plat		Real Property
	Registered Land Survey		Easement Type
	Auditors's Subdivision		Private Driveway
	Condominium		Utility, Storm & Sanitary Sewer
			Misc Easements

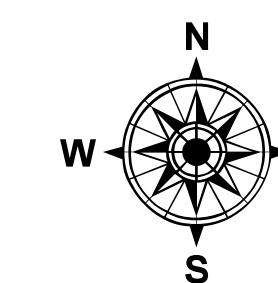
The information on this map is a compilation of Ramsey County Records. THE COUNTY DOES NOT WARRANT OR GUARANTEE THE ACCURACY OF THIS DATA. The County disclaims any liability for any injuries, time delays, or expenses you may suffer if you rely in any manner on the accuracy of this data.

Produced by Information Services Enterprise GIS Division  
RCGISMetaData@Co.Ramsey.MN.US

NOTE: This is not an official Ramsey County tax lot map. This is based on the data available in the Geographic Information System, which may vary from tax data officially recorded in the Tax System. For an official tax map, please contact the Office of Property Records and Revenue.

651-266-2000  
AskPropertyTaxandRecords@co.ramsey.mn.us

Section 5  
Ramsey County



0 4590 180 270 360  
Feet  
1" = 200'  
1:2,400

S322922

1/3/2025