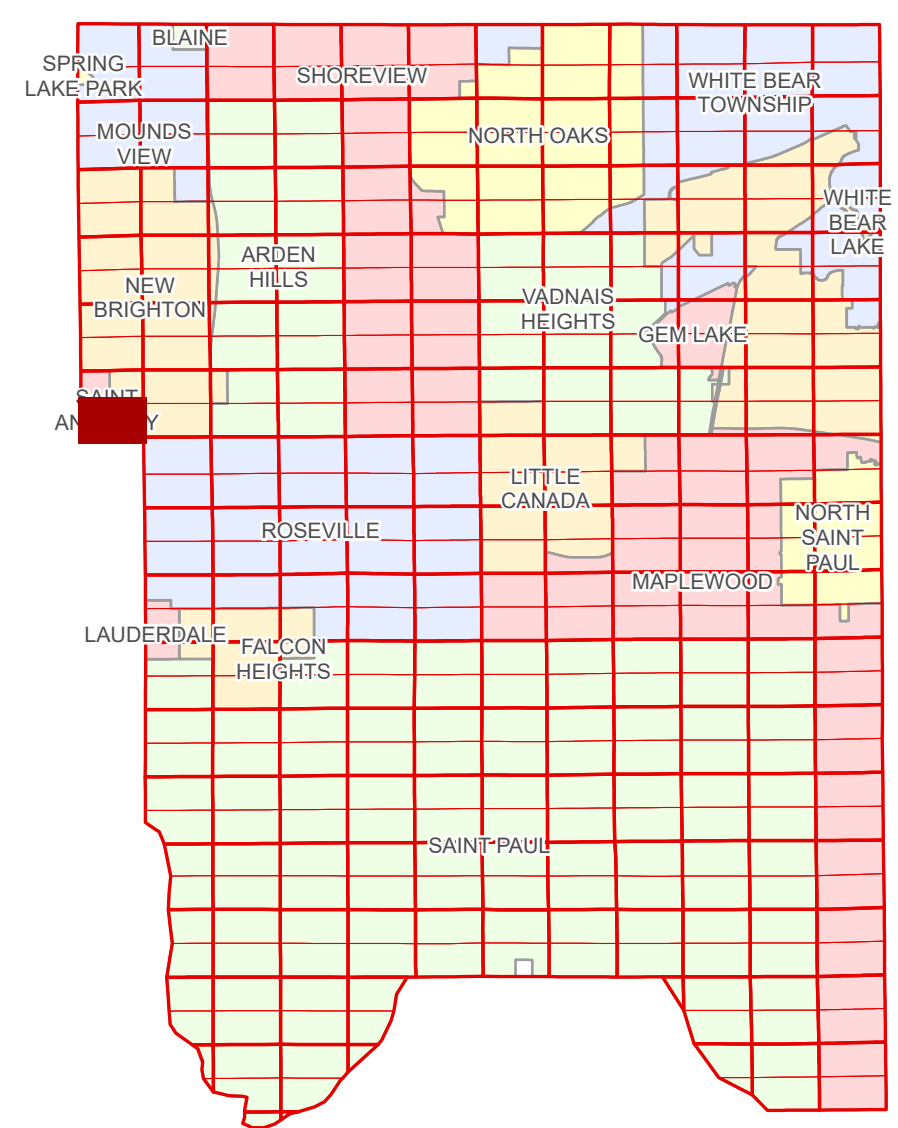


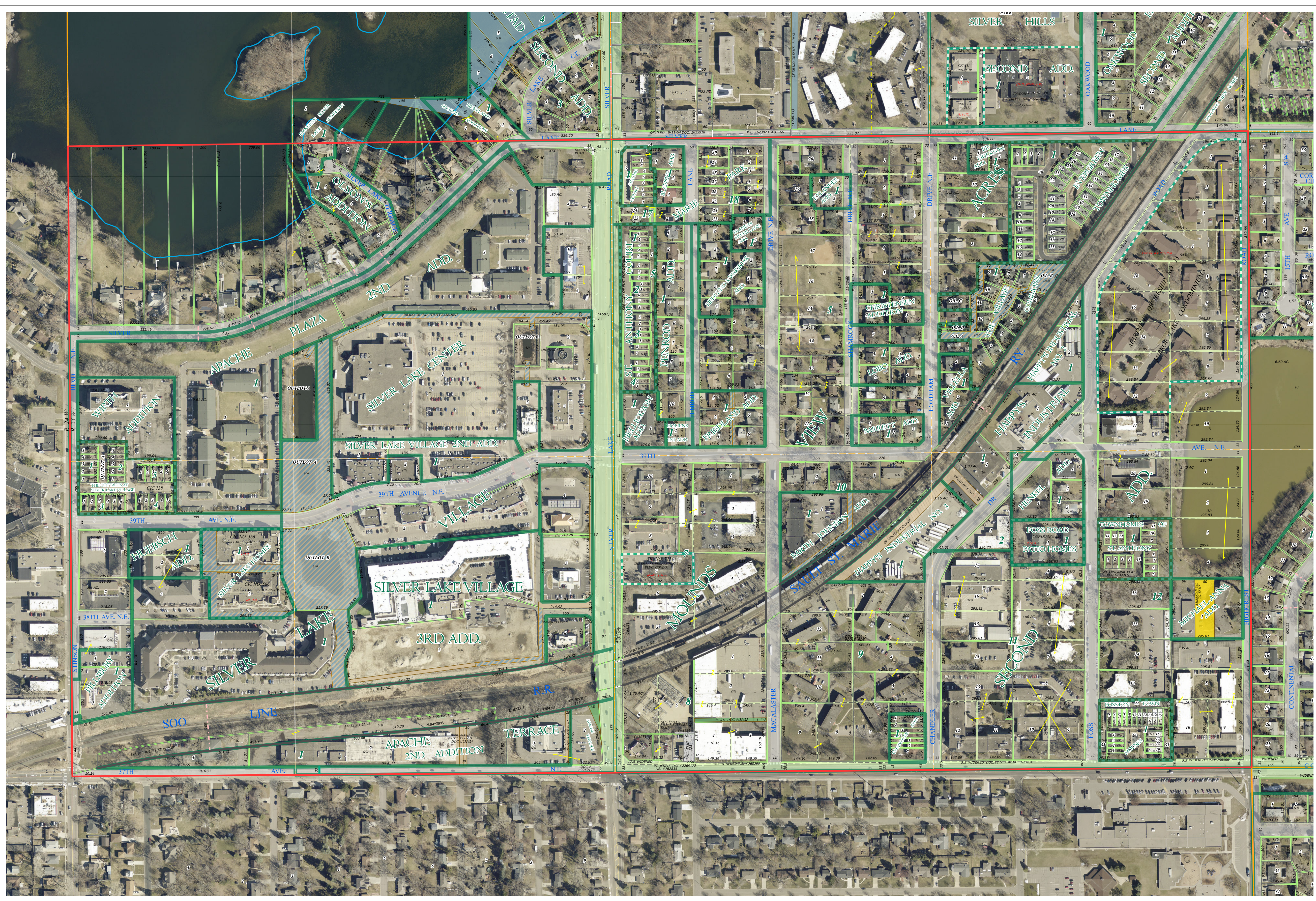
Ramsey County Minnesota Parcel Map

Ramsey County
Section 31

S Half
Section 31
T 30 N
R 23 W



Anoka County
Section 36



Section 32
Ramsey County

Legend			
	Section		Metes & Bounds
	Quarter		Tax Parcel Type
	Quarter Quarter		State Assessed Property
	County Right of Way		Real Property
	Municipal Right of Way	Easement Type	
Subdivision Type			Utility, Gas & Oil
	Subdivision Plat		Utility, Storm & Sanitary Sewer
	Planned Community		Utility, Unidentified
	Condominium		Drainage & Utility
Division Type			Misc Easements
	Lot		

The information on this map is a compilation of Ramsey County Records. THE COUNTY DOES NOT WARRANT OR GUARANTEE THE ACCURACY OF THIS DATA. The County disclaims any liability for any injuries, time delays, or expenses you may suffer if you rely in any manner on the accuracy of this data.

NOTE: This is not an official Ramsey County tax lot map. This is based on the data available in the Geographic Information System, which may vary from tax data officially recorded in the Tax System. For an official tax map, please contact the Office of Property Records and Revenue.

Produced by Information Services Enterprise GIS Division
RCGISMetaData@Co.Ramsey.MN.US

651-266-2000
AskPropertyTaxandRecords@co.ramsey.mn.us

Aerial Imagery Date: March 11 - April 4, 2024



Section 0
Hennepin County



S313023
1/3/2025