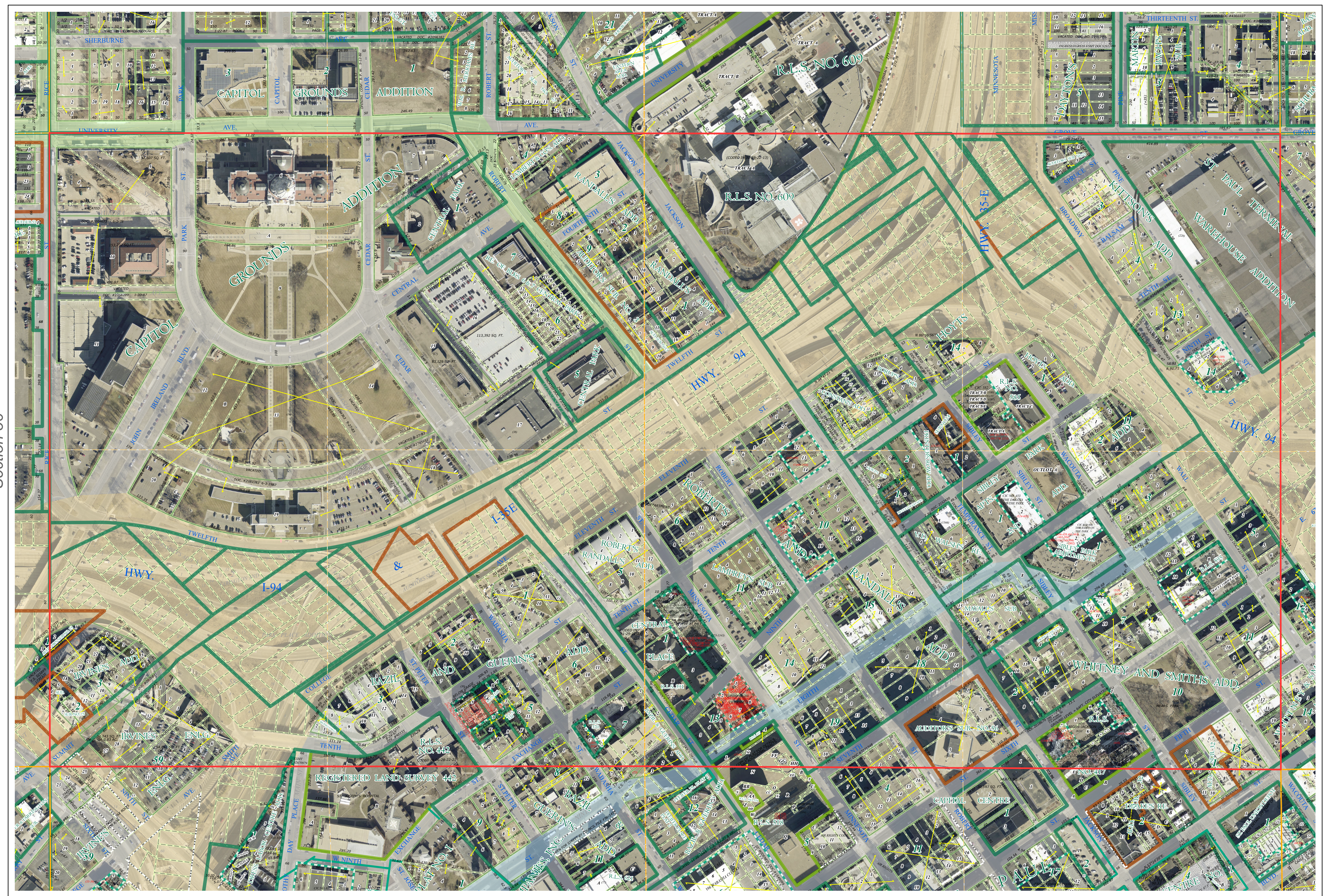
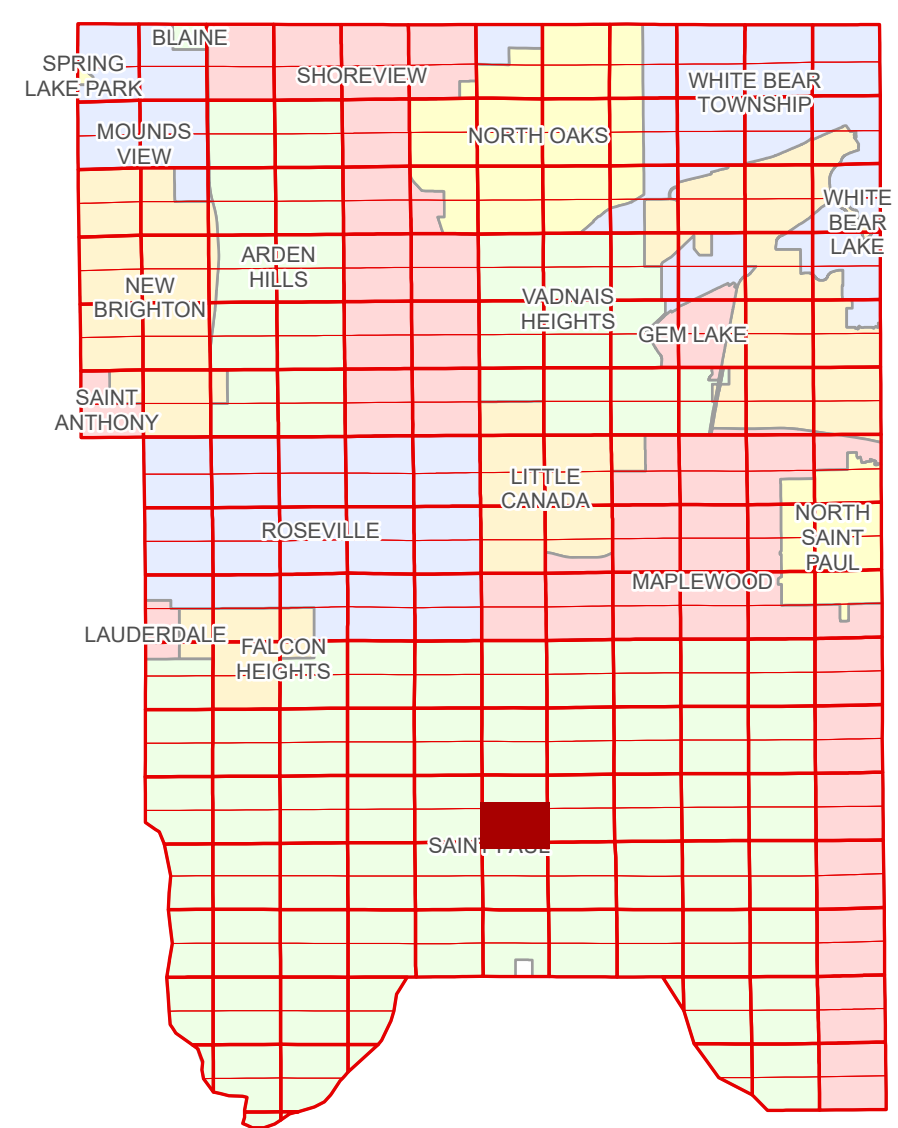


Ramsey County Minnesota Parcel Map

S Half
Section 31
T 29 N
R 22 W

Ramsey County
Section 31



Ramsey County
Section 36

Section 32
Ramsey County

Legend

Section	Condominium
Quarter	Division Type
Quarter Quarter	Lot
Federal Right of Way	Metes & Bounds
State Right of Way	Tax Parcel Type
County Right of Way	Personal Property
Municipal Right of Way	Real Property
Subdivision Type	Easement Type
Subdivision Plat	Parking
Registered Land Survey	Drainage & Utility
Auditors's Subdivision	Misc Easements

Aerial Imagery Date: March 11 - April 4, 2024

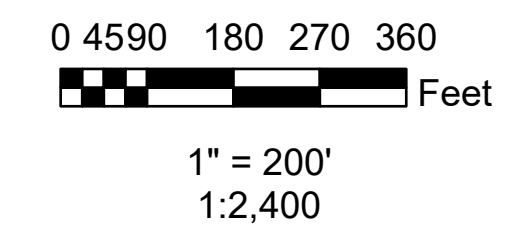
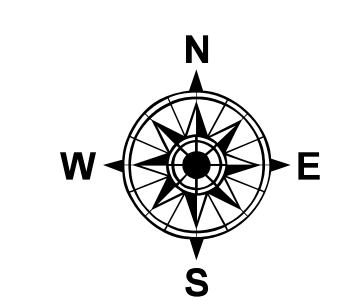
The information on this map is a compilation of Ramsey County Records. THE COUNTY DOES NOT WARRANT OR GUARANTEE THE ACCURACY OF THIS DATA. The County disclaims any liability for any injuries, time delays, or expenses you may suffer if you rely in any manner on the accuracy of this data.

Produced by Information Services Enterprise GIS Division
RCGISMData@Co.Ramsey.MN.US

NOTE: This is not an official Ramsey County tax lot map. This is based on the data available in the Geographic Information System, which may vary from tax data officially recorded in the Tax System. For an official tax map, please contact the Office of Property Records and Revenue.

651-266-2000
AskPropertyTaxandRecords@co.ramsey.mn.us

Section 6
Ramsey County



S312922
1/3/2025