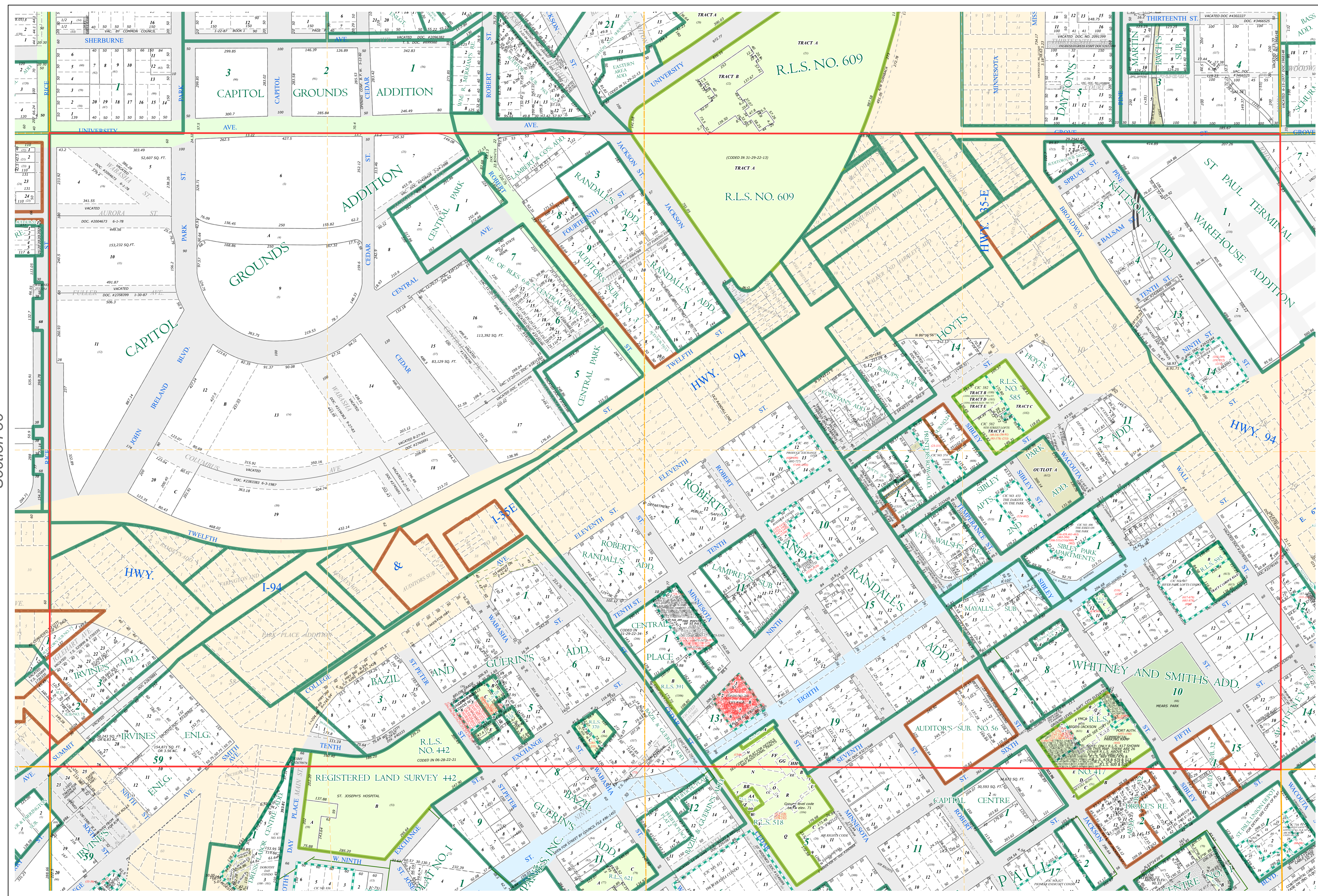
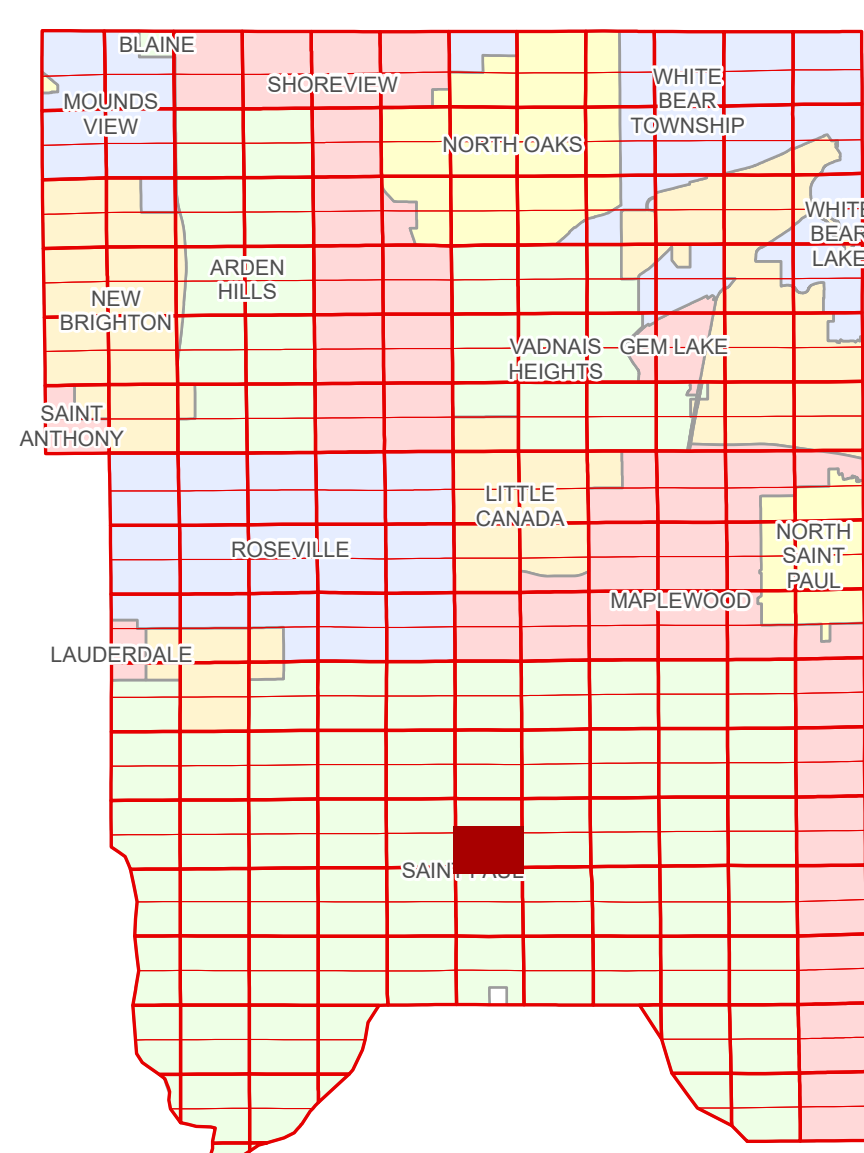


Ramsey County Minnesota Parcel Map

Ramsey County
Section 31

S Half
Section 31
T 29 N
R 22 W



Ramsey County
Section 36

Section 32
Ramsey County

Legend

Section	Division Type
Quarter	Lot
Quarter Quarter	Outlot
Federal Right of Way	Park
State Right of Way	Tract
County Right of Way	Metes & Bounds
Municipal Right of Way	Tax Parcel Type
Subdivision Type	Personal Property
Subdivision Plat	Real Property
Registered Land Survey	Easement Type
Auditors's Subdivision	Parking
Condominium	Drainage & Utility
	Misc Easements

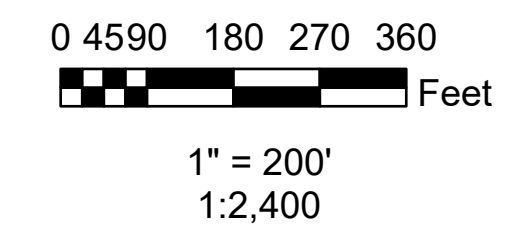
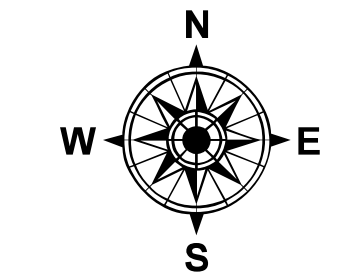
The information on this map is a compilation of Ramsey County Records. THE COUNTY DOES NOT WARRANT OR GUARANTEE THE ACCURACY OF THIS DATA. The County disclaims any liability for any injuries, time delays, or expenses you may suffer if you rely in any manner on the accuracy of this data.

Produced by Information Services Enterprise GIS Division
RCGSMetaData@Co.Ramsey.MN.US

NOTE: This is not an official Ramsey County tax lot map. This is based on the data available in the Geographic Information System, which may vary from tax data officially recorded in the Tax System. For an official tax map, please contact the Office of Property Records and Revenue.

651-266-2000
AskPropertyTaxandRecords@co.ramsey.mn.us

Section 6
Ramsey County



S312922
1/3/2025