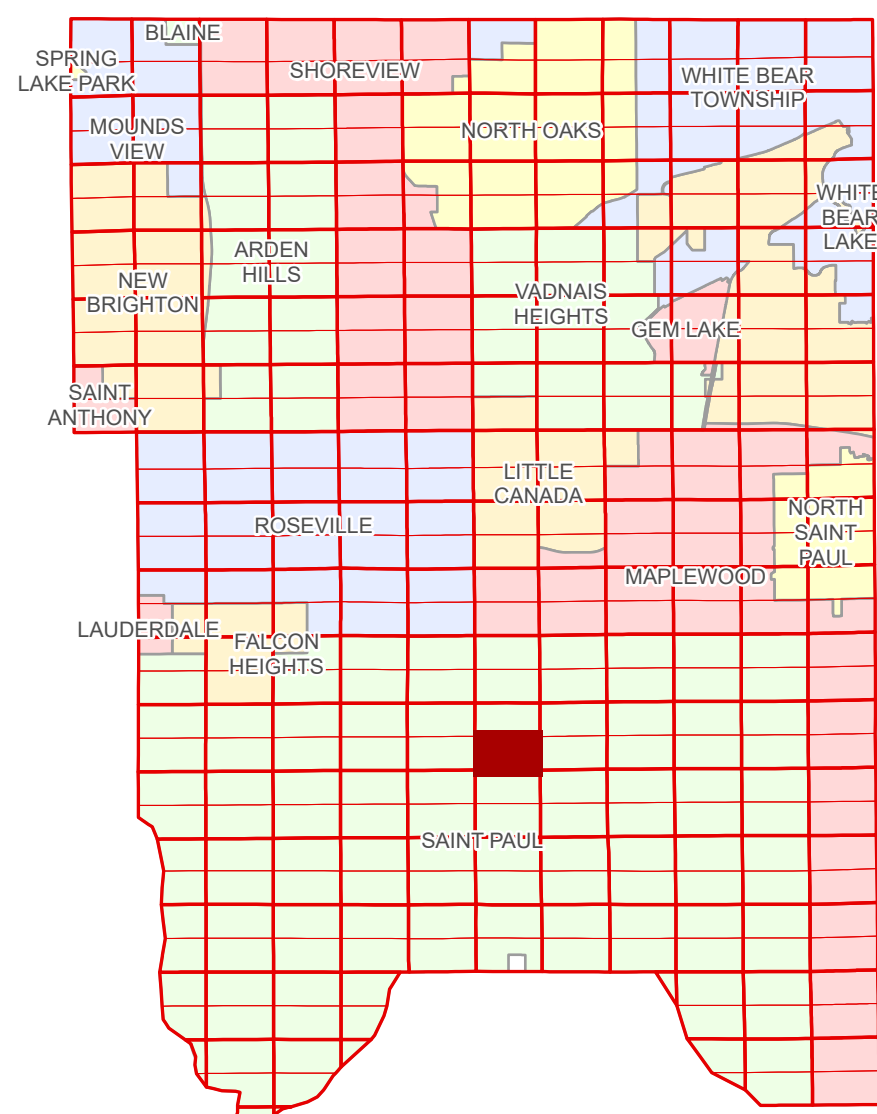


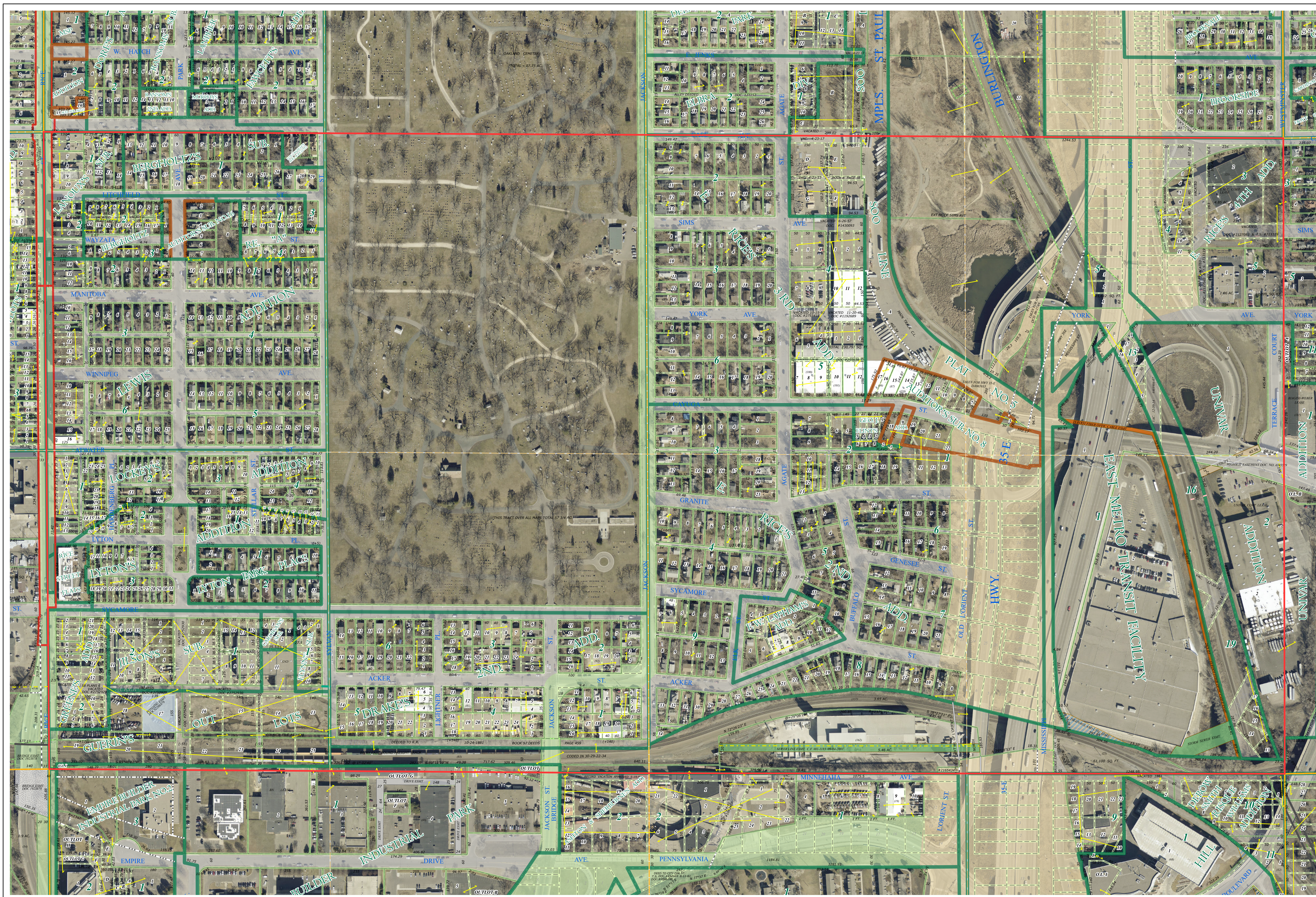
S Half  
Section 30  
T 29 N  
R 22 W

# Ramsey County Minnesota Parcel Map

Ramsey County  
Section 30



Ramsey County  
Section 25



Section 29  
Ramsey County

Legend			
	Section		Metes & Bounds
	Quarter		<b>Tax Parcel Type</b>
	Quarter Quarter		State Assessed Property
	Federal Right of Way		Real Property
	County Right of Way		<b>Easement Type</b>
	Municipal Right of Way		Ponding
	<b>Subdivision Type</b>		Private Driveway
	Subdivision Plat		Utility, Communication
	Auditors's Subdivision		Utility, Storm & Sanitary Sewer
	Highway RoW Plat		Utility, Unidentified
	<b>Division Type</b>		Drainage & Utility
	Lot		

Aerial Imagery Date: March 11 - April 4, 2024



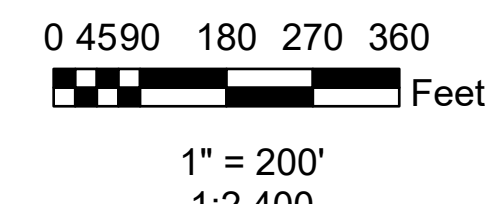
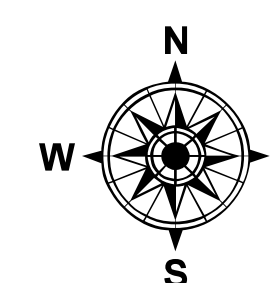
The information on this map is a compilation of Ramsey County Records. THE COUNTY DOES NOT WARRANT OR GUARANTEE THE ACCURACY OF THIS DATA. The County disclaims any liability for any injuries, time delays, or expenses you may suffer if you rely in any manner on the accuracy of this data.

Produced by Information Services Enterprise GIS Division  
RCGISMetaData@Co.Ramsey.MN.US

NOTE: This is not an official Ramsey County tax lot map. This is based on the data available in the Geographic Information System, which may vary from tax data officially recorded in the Tax System. For an official tax map, please contact the Office of Property Records and Revenue.

651-266-2000  
AskPropertyTaxandRecords@co.ramsey.mn.us

Section 31  
Ramsey County



S302922

1/3/2025