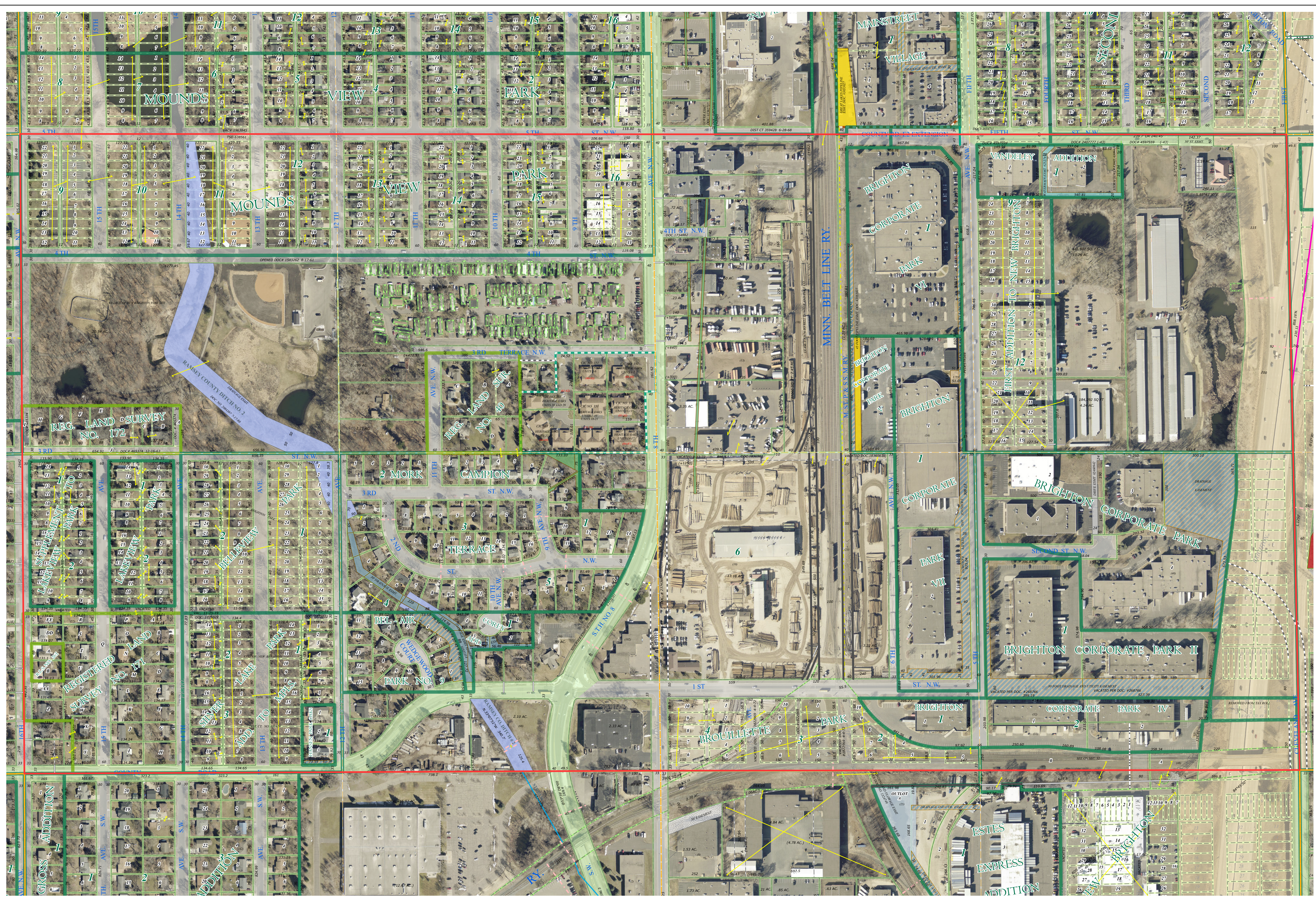
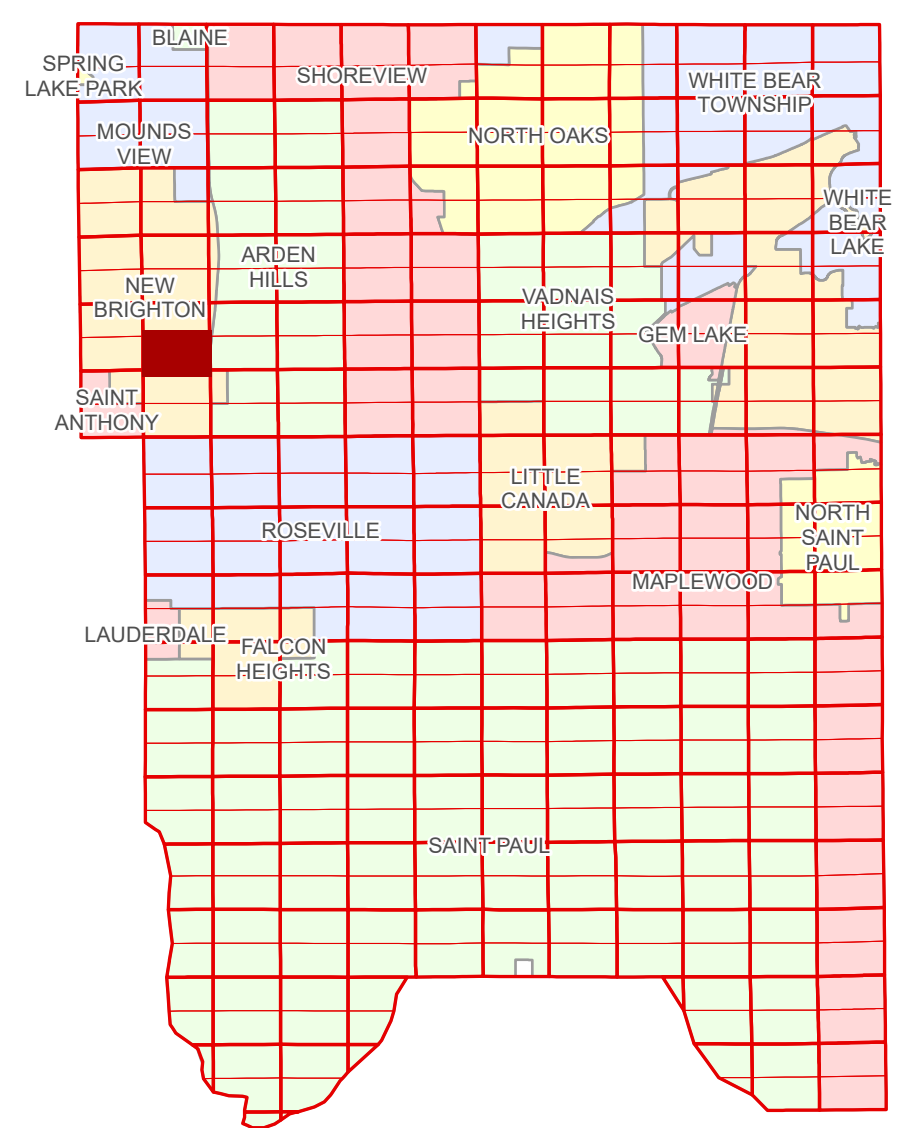


Ramsey County Minnesota Parcel Map

S Half
Section 29
T 30 N
R 23 W

Ramsey County
Section 29



Legend			
	Section		Personal Property
	Quarter		State Assessed Property
	Quarter Quarter		Manufactured Home
	Federal Right of Way		Real Property
	County Right of Way		Easement Type
	Municipal Right of Way		Ditch, County & Judicial
	Subdivision Type		Pedestrian
	Subdivision Plat		Private Driveway
	Registered Land Survey		Utility, Gas & Oil
	Condominium		Utility, Storm & Sanitary Sewer
	Division Type		Utility, Water
	Lot		Utility, Unidentified
	Metes & Bounds		Drainage & Utility
			Drainage

The information on this map is a compilation of Ramsey County Records. THE COUNTY DOES NOT WARRANT OR GUARANTEE THE ACCURACY OF THIS DATA. THE County disclaims any liability for any injuries, time delays, or expenses you may suffer if you rely in any manner on the accuracy of this data.

NOTE: This is not an official Ramsey County tax lot map. This is based on the data available in the Geographic Information System, which may vary from tax data officially recorded in the Tax System. For an official tax map, please contact the Office of Property Records and Revenue.

Produced by Information Services Enterprise GIS Division
RCGSMetaData@Co.Ramsey.MN.US

651-266-2000
AskPropertyTaxandRecords@co.ramsey.mn.us

Section 32
Ramsey County

Aerial Imagery Date: March 11 - April 4, 2024



S293023
1/3/2025