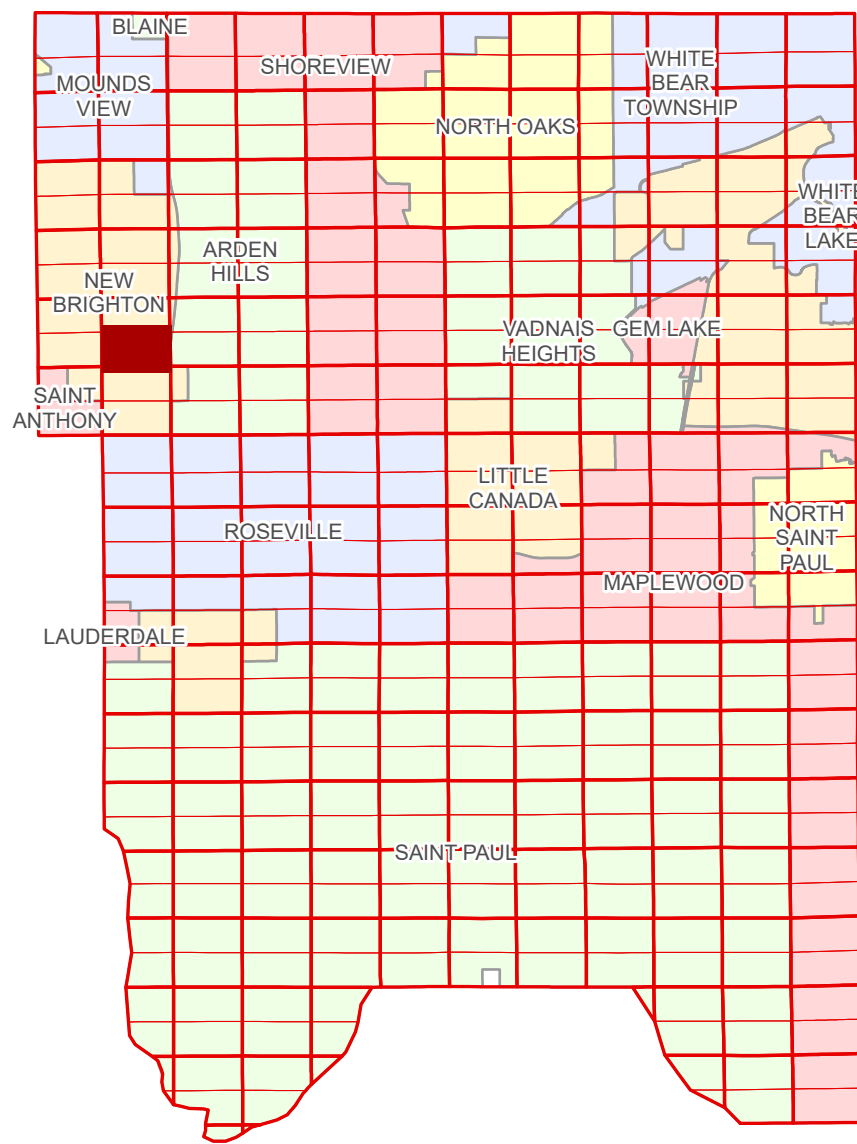


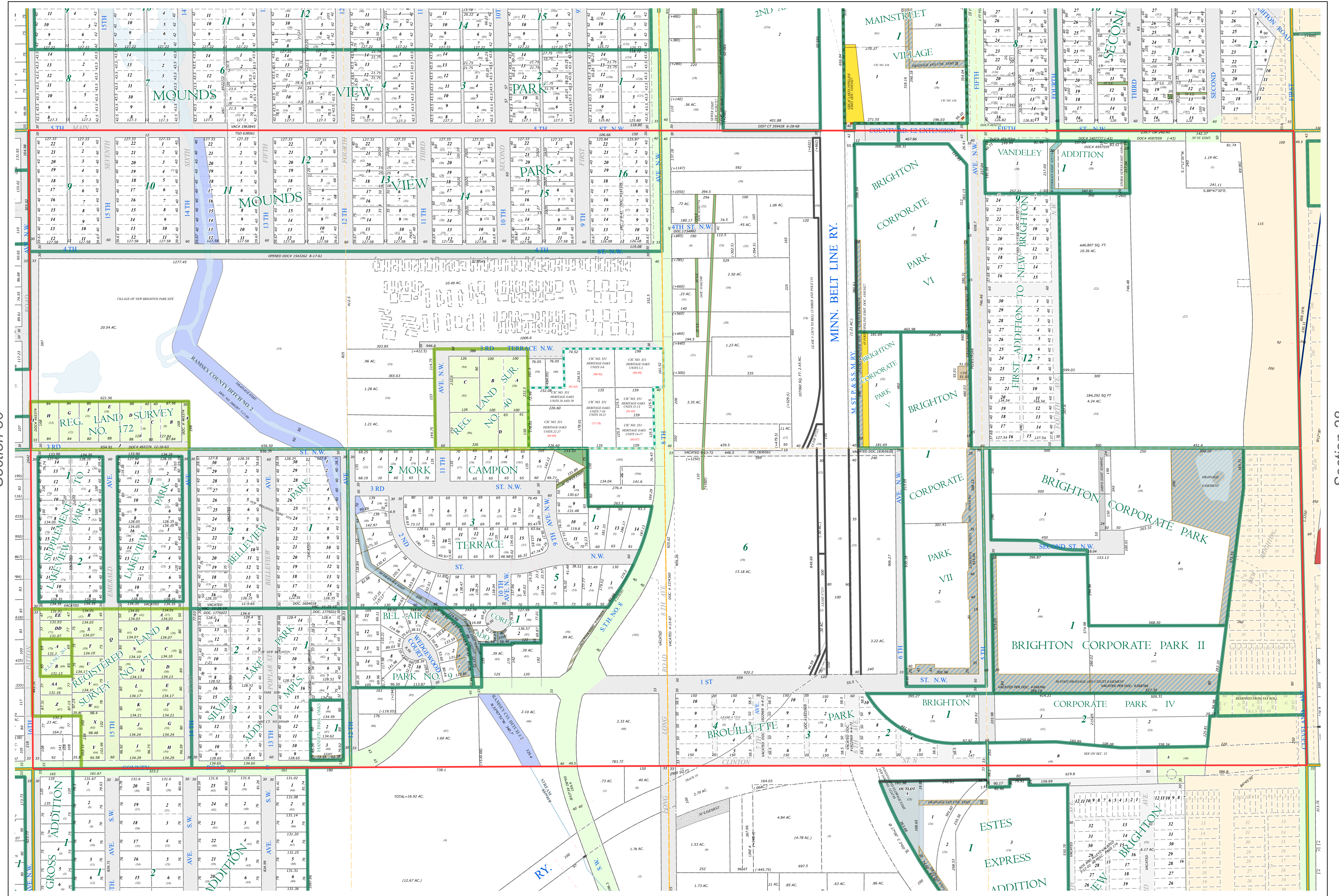
S Half
Section 29
T 30 N
R 23 W

Ramsey County Minnesota Parcel Map

Ramsey County
Section 29



Ramsey County
Section 30



Legend

Section	Tax Parcel Type
Quarter	Personal Property
Quarter Quarter	State Assessed Property
Federal Right of Way	Manufactured Home
County Right of Way	Real Property
Municipal Right of Way	Easement Type
Subdivision Plot	Ditch, County & Judicial
Registered Land Survey	Pedestrian
Condominium	Private Driveway
Division Type	Utility, Gas & Oil
Lot	Utility, Storm & Sanitary Sewer
Tract	Utility, Water
Metes & Bounds	Utility, Unidentified
	Drainage & Utility
	Drainage

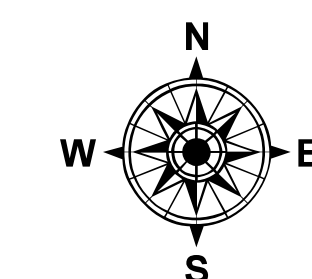
The information on this map is a compilation of Ramsey County Records. THE COUNTY DOES NOT WARRANT OR GUARANTEE THE ACCURACY OF THIS DATA. The County disclaims any liability for any injuries, time delays, or expenses you may suffer if you rely in any manner on the accuracy of this data.

Produced by Information Services Enterprise GIS Division
RCGISMetaData@Co.Ramsey.MN.US

NOTE: This is not an official Ramsey County tax lot map. This is based on the data available in the Geographic Information System, which may vary from tax data officially recorded in the Tax System. For an official tax map, please contact the Office of Property Records and Revenue.

651-266-2000
AskPropertyTaxandRecords@co.ramsey.mn.us

Section 32
Ramsey County



0 4590 180 270 360
Feet

1" = 200'

1:2,400

S293023

1/3/2025