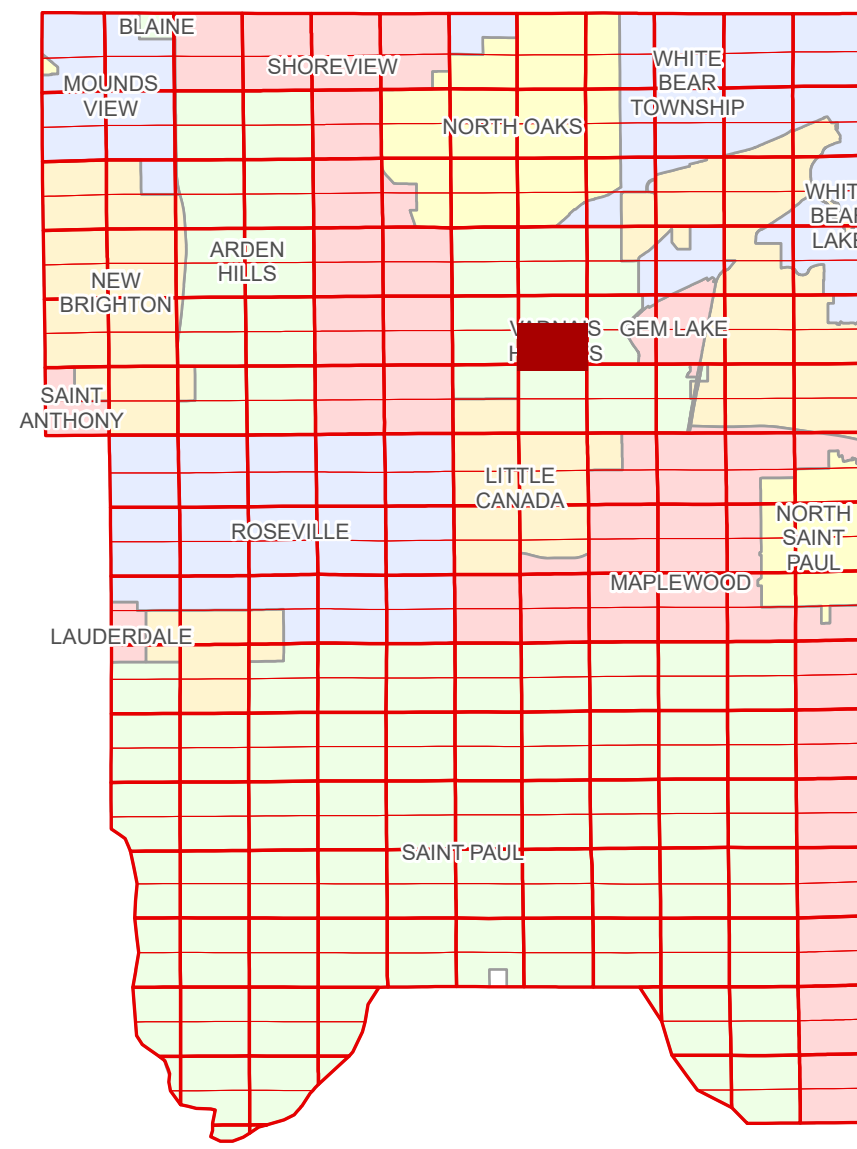


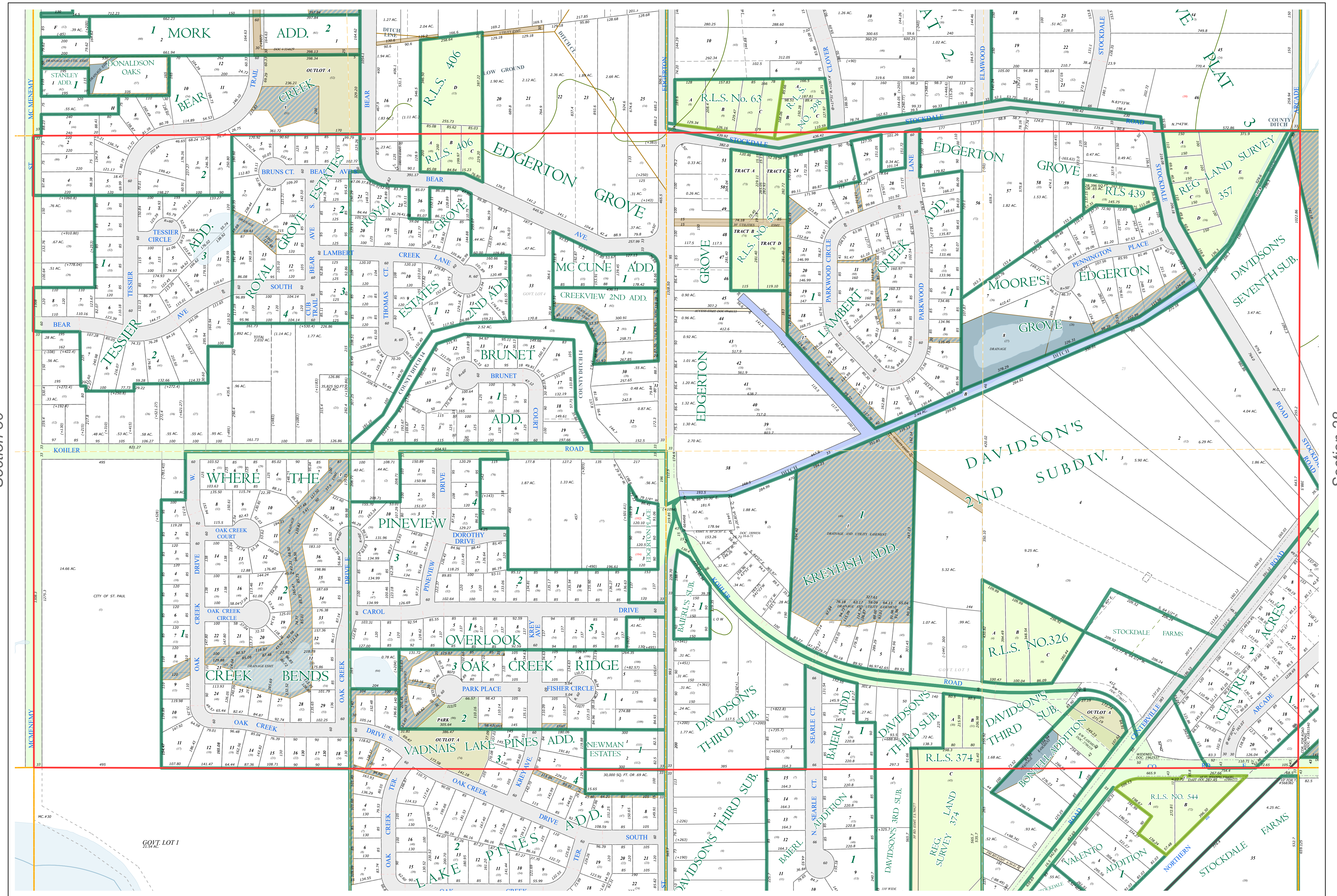
S Half
Section 29
T 30 N
R 22 W

Ramsey County Minnesota Parcel Map

Ramsey County
Section 29



Ramsey County
Section 30



Section 28
Ramsey County

Legend			
	Section		Metes & Bounds
	Quarter		Tax Parcel Type
	Quarter Quarter		Personal Property
	County Right of Way		State Assessed Property
	Municipal Right of Way		Real Property
	Subdivision Type		Easement Type
	Registered Land Survey		Ditch, County & Judicial
	Division Type		Private Access
	Lot		Private Driveway
	Outlot		Utility, Unidentified
	Park		Drainage & Utility
	Tract		Drainage

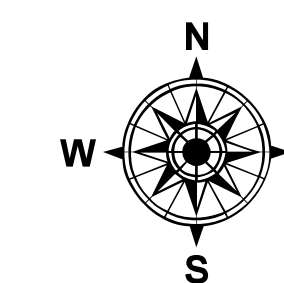
The information on this map is a compilation of Ramsey County Records. THE COUNTY DOES NOT WARRANT OR GUARANTEE THE ACCURACY OF THIS DATA. The County disclaims any liability for any injuries, time delays, or expenses you may suffer if you rely in any manner on the accuracy of this data.

Produced by Information Services Enterprise GIS Division
RCGISMataData@Co.Ramsey.MN.US

NOTE: This is not an official Ramsey County tax lot map. This is based on the data available in the Geographic Information System, which may vary from tax data officially recorded in the Tax System. For an official tax map, please contact the Office of Property Records and Revenue.

651-266-2000
AskPropertyTaxandRecords@co.ramsey.mn.us

Section 32
Ramsey County



0 4590 180 270 360
Feet

1" = 200'
1:2,400

S293022

1/3/2025