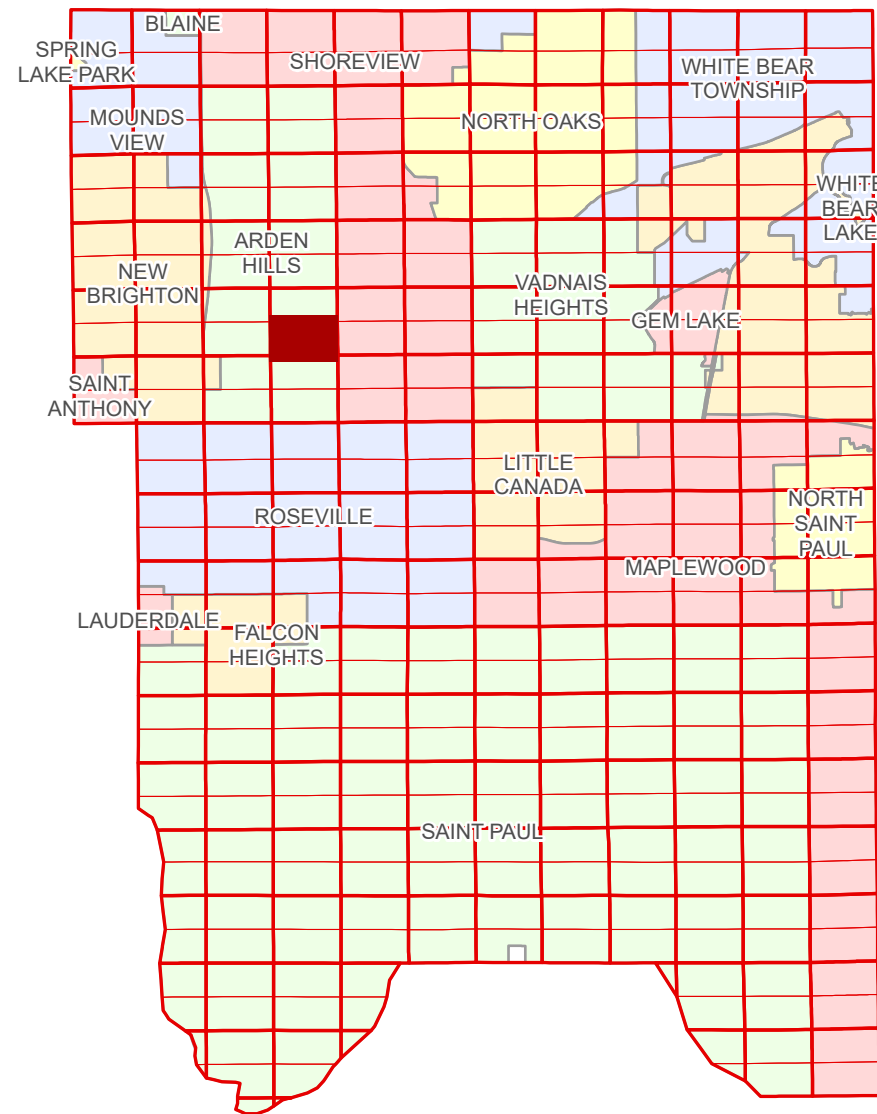


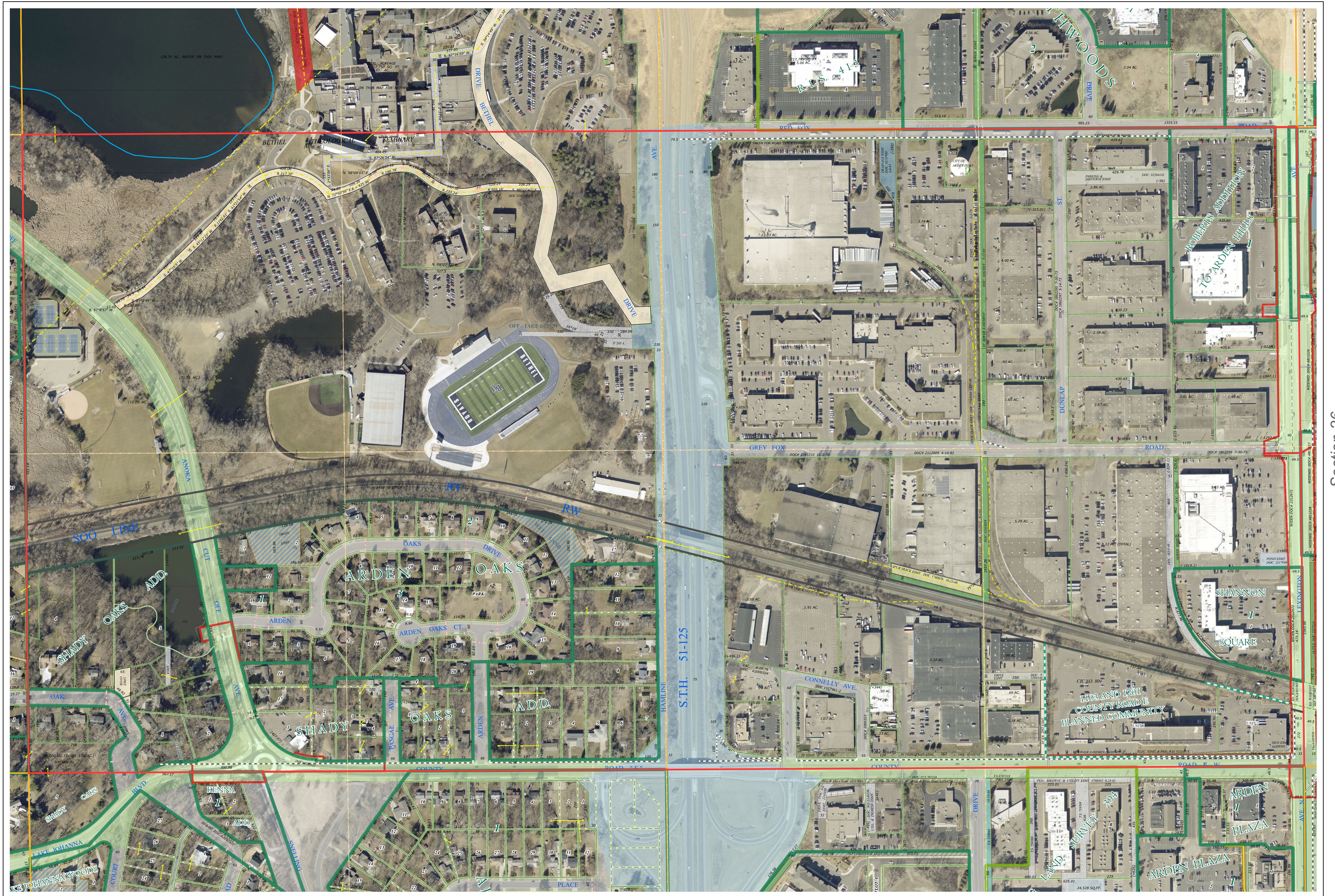
# Ramsey County Minnesota Parcel Map

Ramsey County  
Section 27

S Half  
Section 27  
T 30 N  
R 23 W



Ramsey County  
Section 28



Section 26  
Ramsey County

Legend			
	Section		Personal Property
	Quarter		State Assessed Property
	Quarter Quarter		Real Property
	State Right of Way		Ponding
	County Right of Way		Parking
	Municipal Right of Way		Pedestrian
	Subdivision Type		Private Access
	Subdivision Plat		Private Driveway
	Registered Land Survey		Railroad
	Highway RoW Plat		Utility, Electric
	Condominium		Utility, Storm & Sanitary Sewer
	Division Type		Utility, Unidentified
	Lot		Drainage & Utility
	Metes & Bounds		Drainage
			Misc Easements

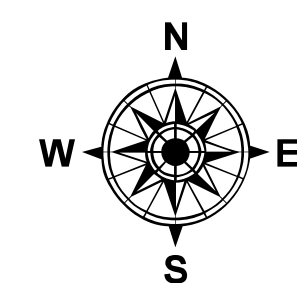
Aerial Imagery Date: March 11 - April 4, 2024



The information on this map is a compilation of Ramsey County Records. THE COUNTY DOES NOT WARRANT OR GUARANTEE THE ACCURACY OF THIS DATA. The County disclaims any liability for any injuries, time delays, or expenses you may suffer if you rely in any manner on the accuracy of this data.  
Produced by Information Services Enterprise GIS Division  
RCGISMetaData@Co.Ramsey.MN.US

NOTE: This is not an official Ramsey County tax lot map. This is based on the data available in the Geographic Information System, which may vary from tax data officially recorded in the Tax System. For an official tax map, please contact the Office of Property Records and Revenue.  
651-266-2000  
AskPropertyTaxandRecords@co.ramsey.mn.us

Section 34  
Ramsey County



0 4590 180 270 360 Feet  
1" = 200'  
1:2,400

S273023

1/3/2025