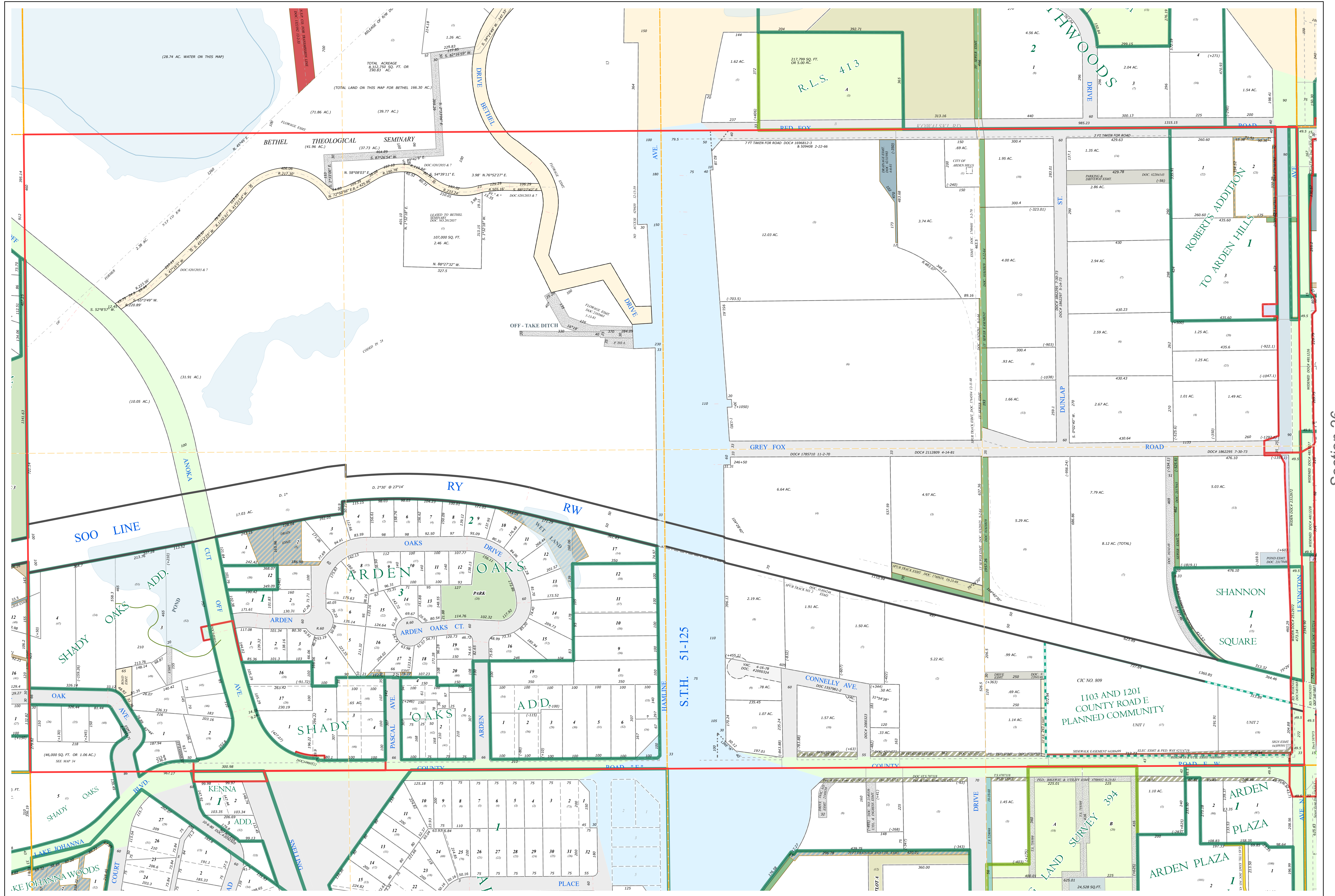
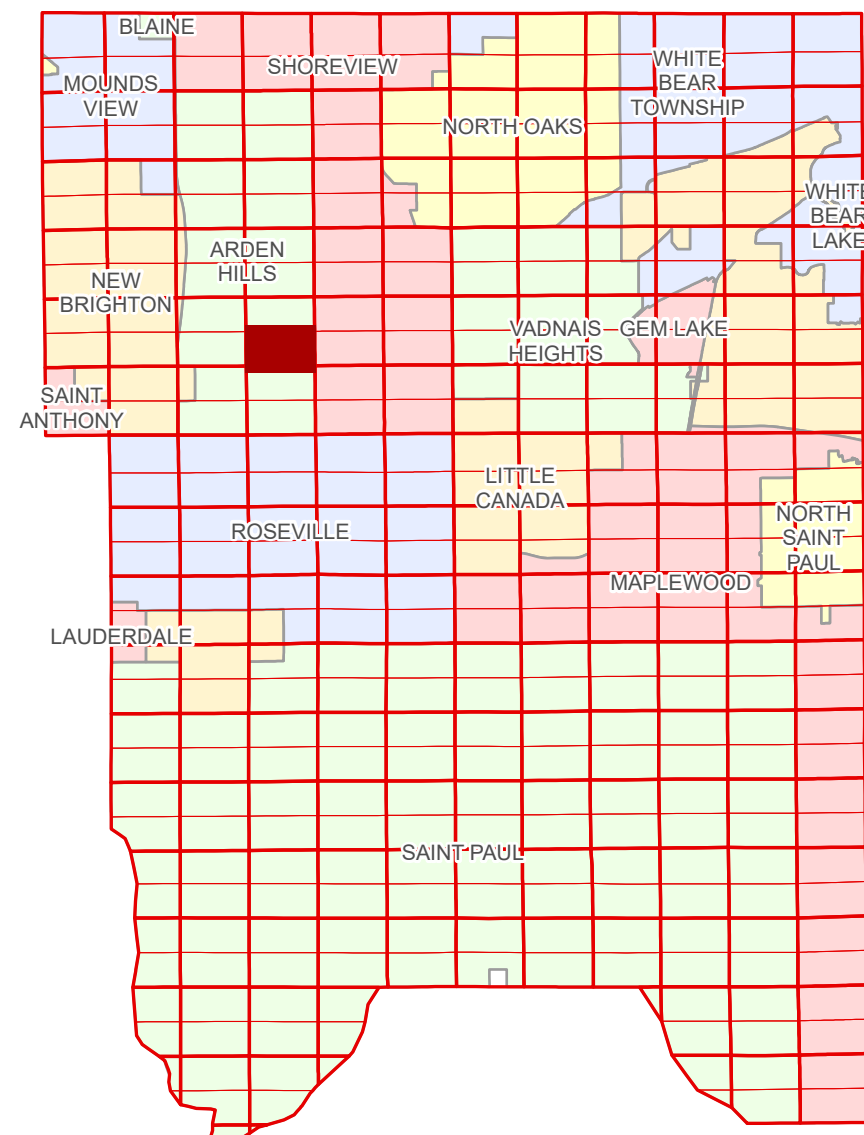


# Ramsey County Minnesota Parcel Map

Ramsey County  
Section 27

S Half  
Section 27  
T 30 N  
R 23 W



Ramsey County  
Section 28

Section 26  
Ramsey County

Legend	
	Section
	Quarter
	Quarter Quarter
	State Right of Way
	County Right of Way
	Municipal Right of Way
	Subdivision Type
	Registered Land Survey
	Highway RoW Plat
	Condominium
	Division Type
	Lot
	Other
	Park
	Tract
	Metes & Bounds
	Personal Property
	State Assessed Property
	Real Property
	Easement Type
	Ponding
	Parking
	Pedestrian
	Private Access
	Private Driveway
	Railroad
	Utility, Electric
	Utility, Storm & Sanitary Sewer
	Utility, Unidentified
	Drainage & Utility
	Drainage
	Misc Easements

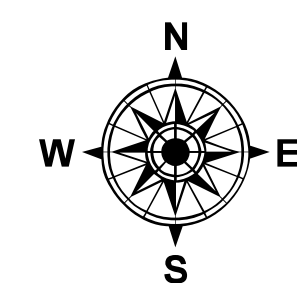
The information on this map is a compilation of Ramsey County Records. THE COUNTY DOES NOT WARRANT OR GUARANTEE THE ACCURACY OF THIS DATA. The County disclaims any liability for any injuries, time delays, or expenses you may suffer if you rely in any manner on the accuracy of this data.

Produced by Information Services Enterprise GIS Division  
RCGISMetaData@Co.Ramsey.MN.US

NOTE: This is not an official Ramsey County tax lot map. This is based on the data available in the Geographic Information System, which may vary from tax data officially recorded in the Tax System. For an official tax map, please contact the Office of Property Records and Revenue.

651-266-2000  
AskPropertyTaxandRecords@co.ramsey.mn.us

Section 34  
Ramsey County



0 450 180 270 360 Feet  
1" = 200'  
1:2,400

S273023

1/3/2025