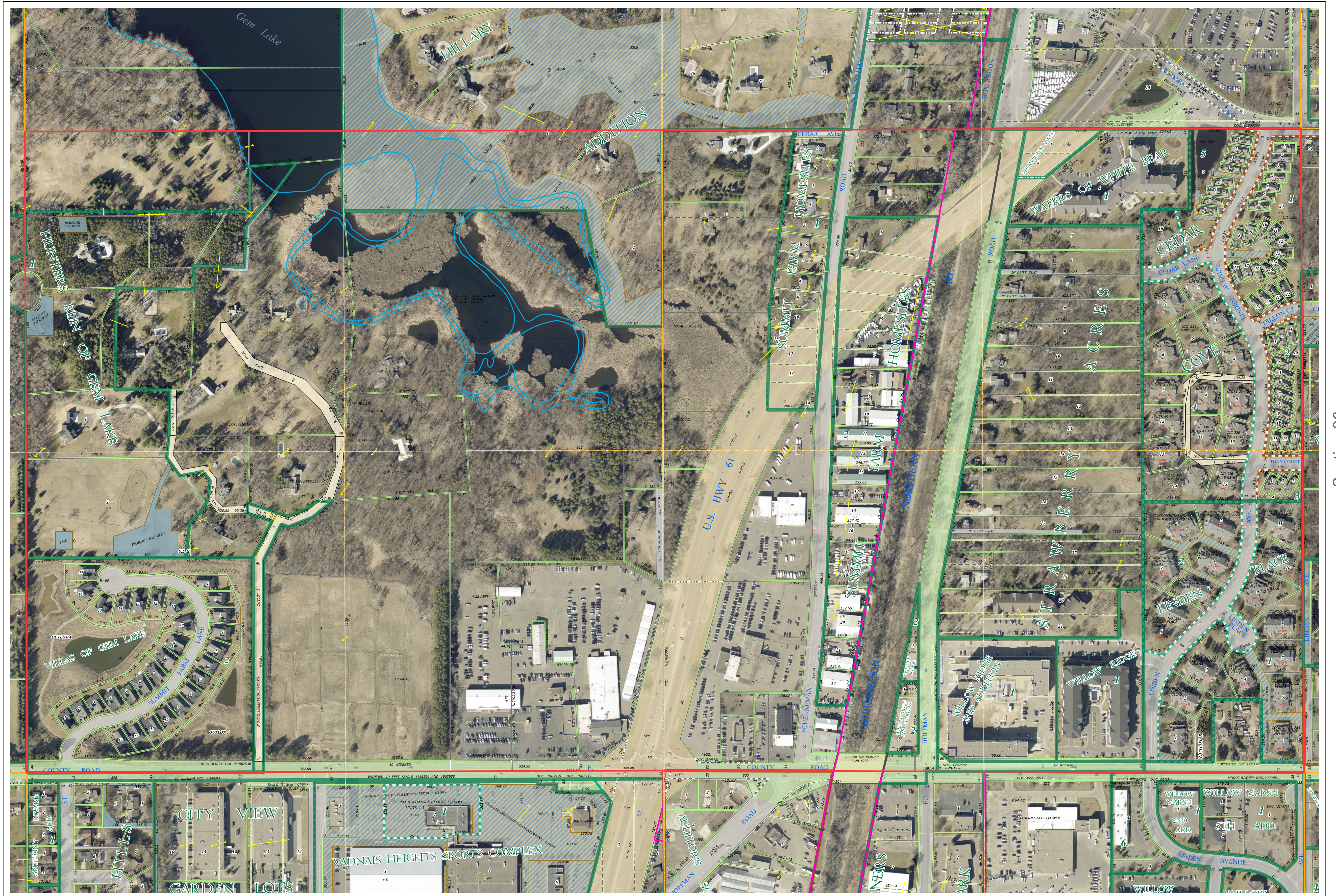
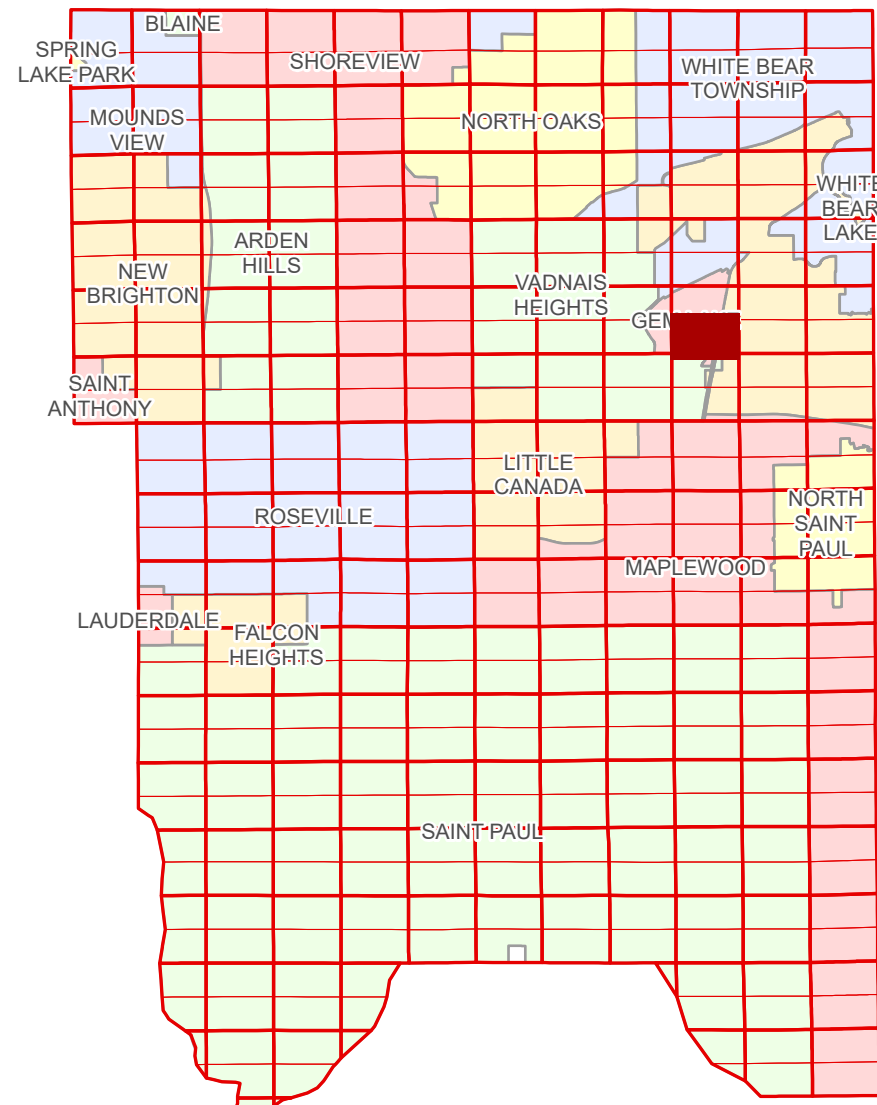


Ramsey County Minnesota Parcel Map

Ramsey County
Section 27

S Half
Section 27
T 30 N
R 22 W



Ramsey County
Section 28

Section 26
Ramsey County

Legend			
	Section		Metes & Bounds
	Quarter		State Assessed Property
	Quarter Quarter		Real Property
	Federal Right of Way		Private Access
	County Right of Way		Private Driveway
	Municipal Right of Way		Railroad
	Subdivision Plat		Utility, Gas & Oil
	Auditor's Subdivision		Drainage & Utility
	Planned Community		Drainage
	Condominium		Misc Easements
	Division Type		
	Lot		

The information on this map is a compilation of Ramsey County Records. THE COUNTY DOES NOT WARRANT OR GUARANTEE THE ACCURACY OF THIS DATA. The County disclaims any liability for any injuries, time delays, or expenses you may suffer if you rely in any manner on the accuracy of this data.

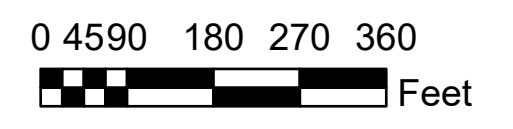
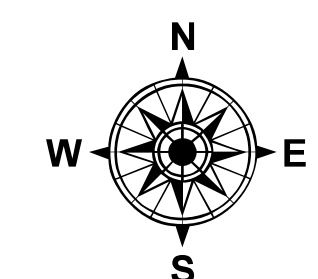
Produced by Information Services Enterprise GIS Division
RCGISMetaData@Co.Ramsey.MN.US

NOTE: This is not an official Ramsey County tax lot map. This is based on the data available in the Geographic Information System, which may vary from tax data officially recorded in the Tax System. For an official tax map, please contact the Office of Property Records and Revenue.

651-266-2000
AskPropertyTaxandRecords@co.ramsey.mn.us

Section 34
Ramsey County

Aerial Imagery Date: March 11 - April 4, 2024



1" = 200'
1:2,400

S273022

1/3/2025