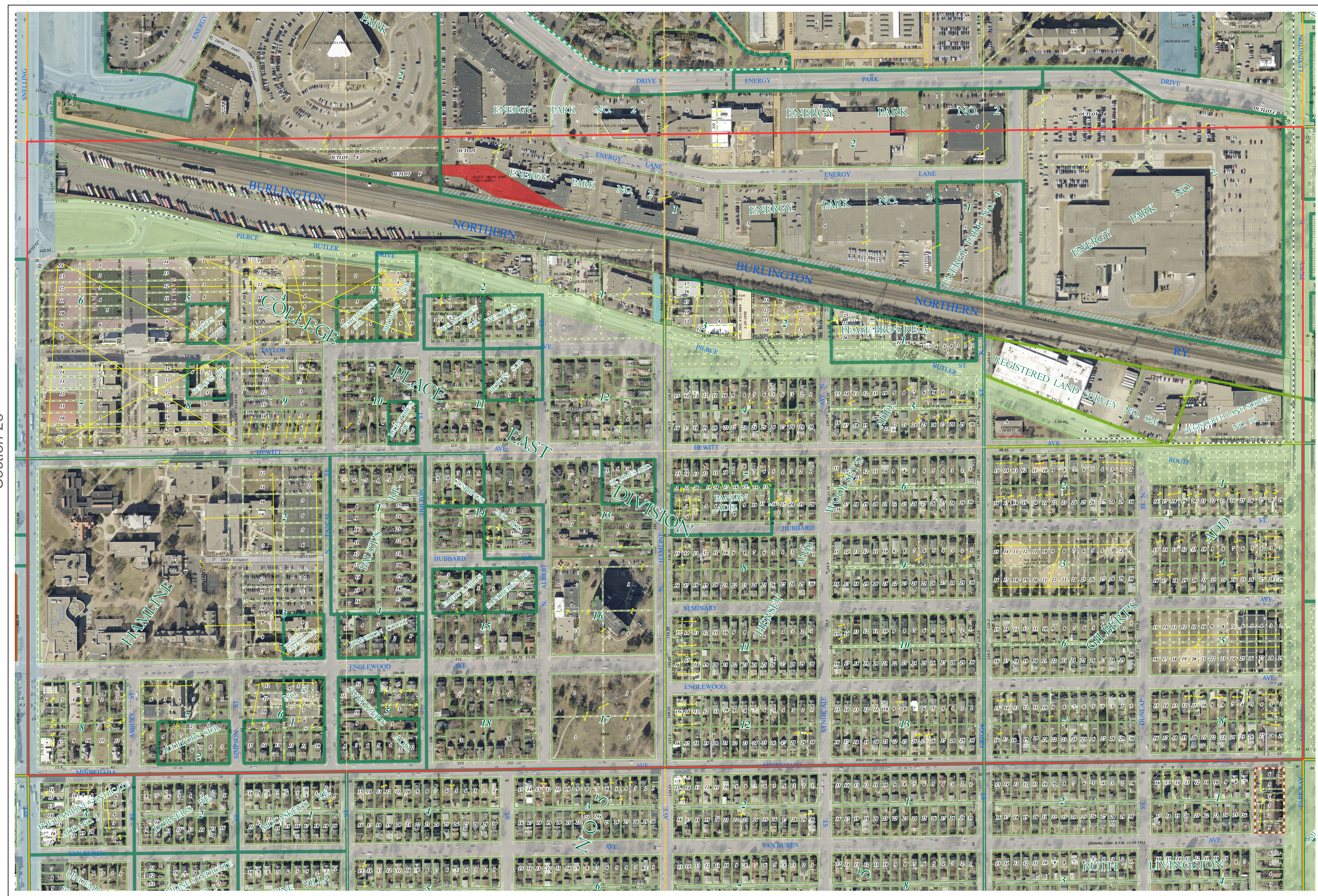
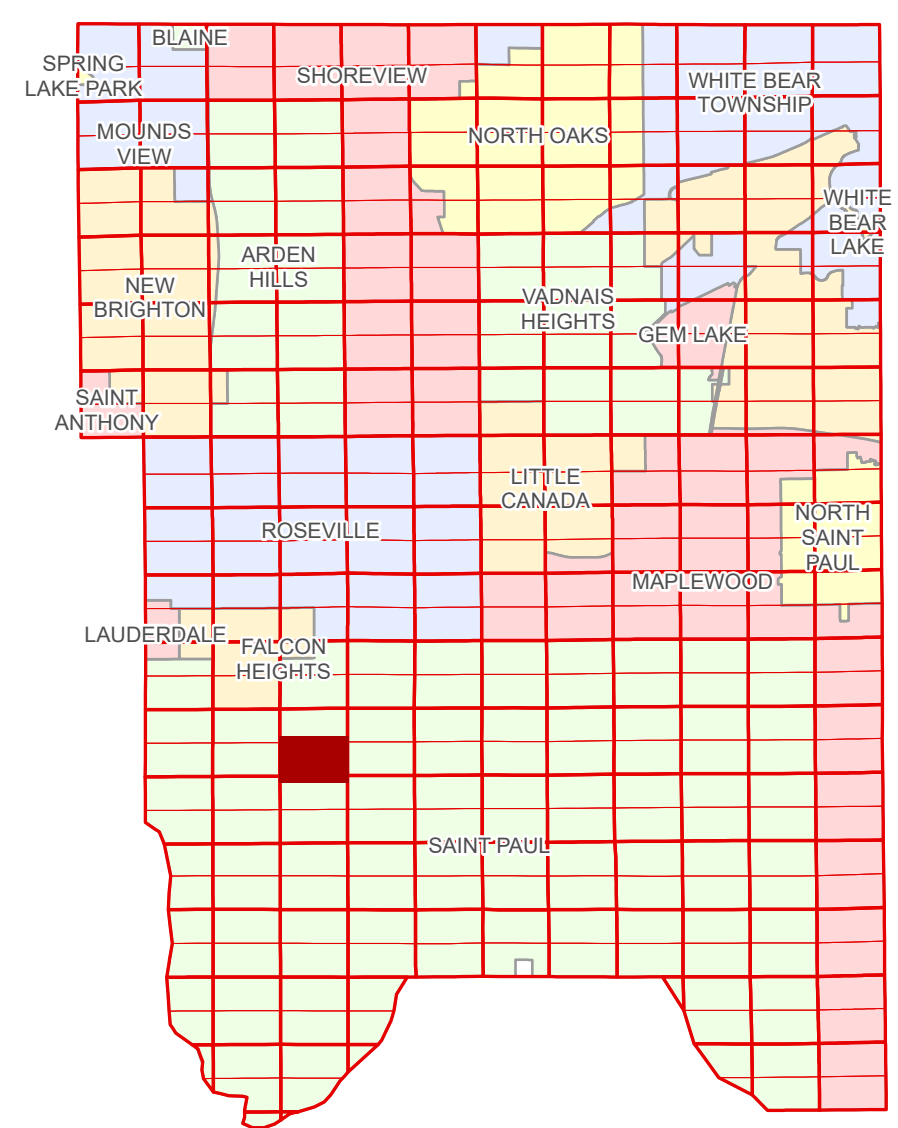


Ramsey County Minnesota Parcel Map

S Half
Section 27
T 29 N
R 23 W

Ramsey County
Section 27



Ramsey County
Section 28

Section 26
Ramsey County

Section 34
Ramsey County

Legend			
	Section		Tax Parcel Type
	Quarter		Personal Property
	Quarter Quarter		State Assessed Property
	State Right of Way		Real Property
	County Right of Way		Easement Type
	Municipal Right of Way		Pedestrian
	Subdivision Type		Private Access
	Subdivision Plat		Private Driveway
	Registered Land Survey		Utility, Electric
	Auditors's Subdivision		Utility, Storm & Sanitary Sewer
	Division Type		Utility, Water
	Lot		Utility, Unidentified
	Metes & Bounds		Drainage & Utility

The information on this map is a compilation of Ramsey County Records. THE COUNTY DOES NOT WARRANT OR GUARANTEE THE ACCURACY OF THIS DATA. The County disclaims any liability for any injuries, time delays, or expenses you may suffer if you rely in any manner on the accuracy of this data.

Produced by Information Services Enterprise GIS Division
RCGISMetaData@Co.Ramsey.MN.US

NOTE: This is not an official Ramsey County tax lot map. This is based on the data available in the Geographic Information System, which may vary from tax data officially recorded in the Tax System. For an official tax map, please contact the Office of Property Records and Revenue.

651-266-2000
AskPropertyTaxandRecords@co.ramsey.mn.us

Aerial Imagery Date: March 11 - April 4, 2024



S272923
1/3/2025