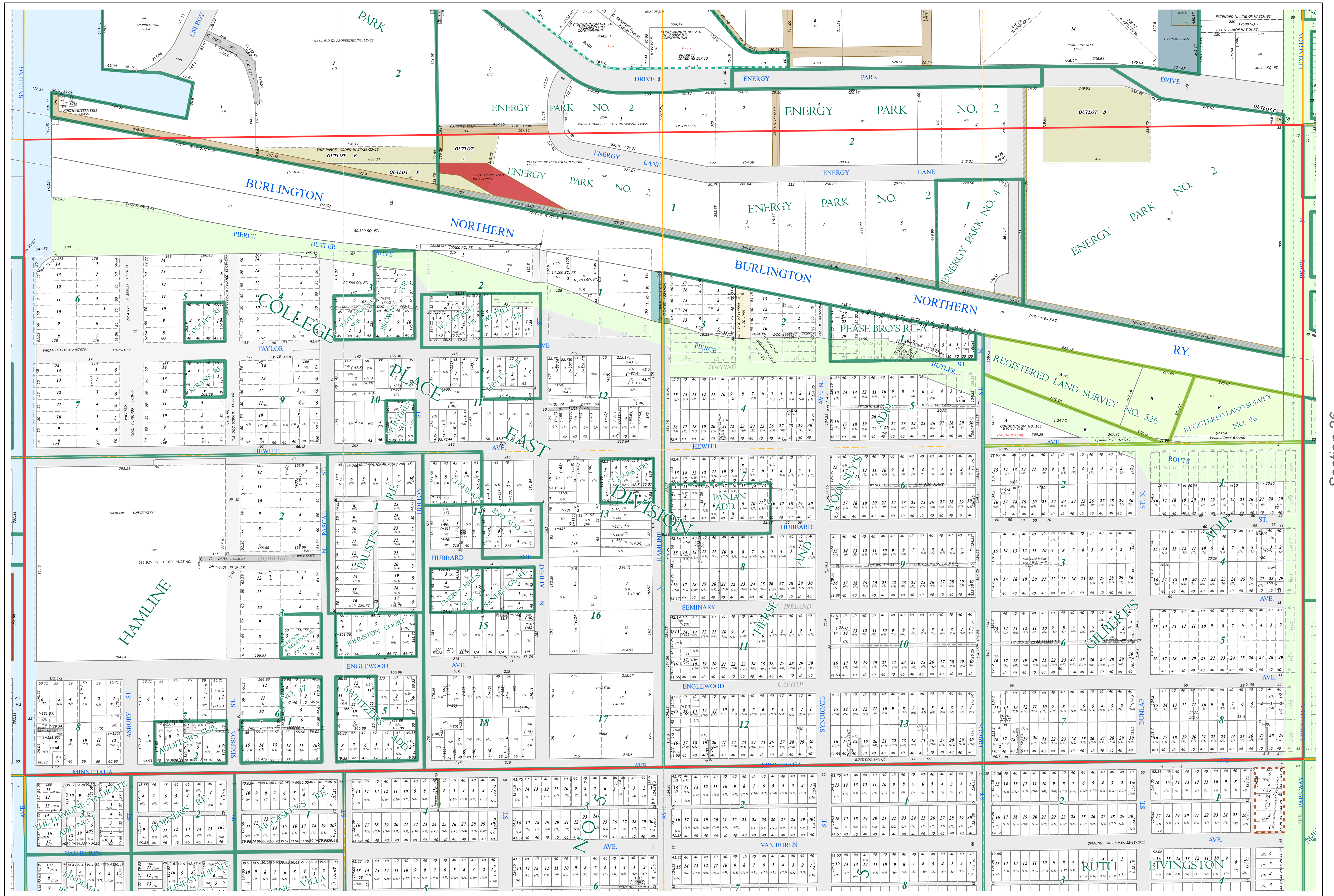
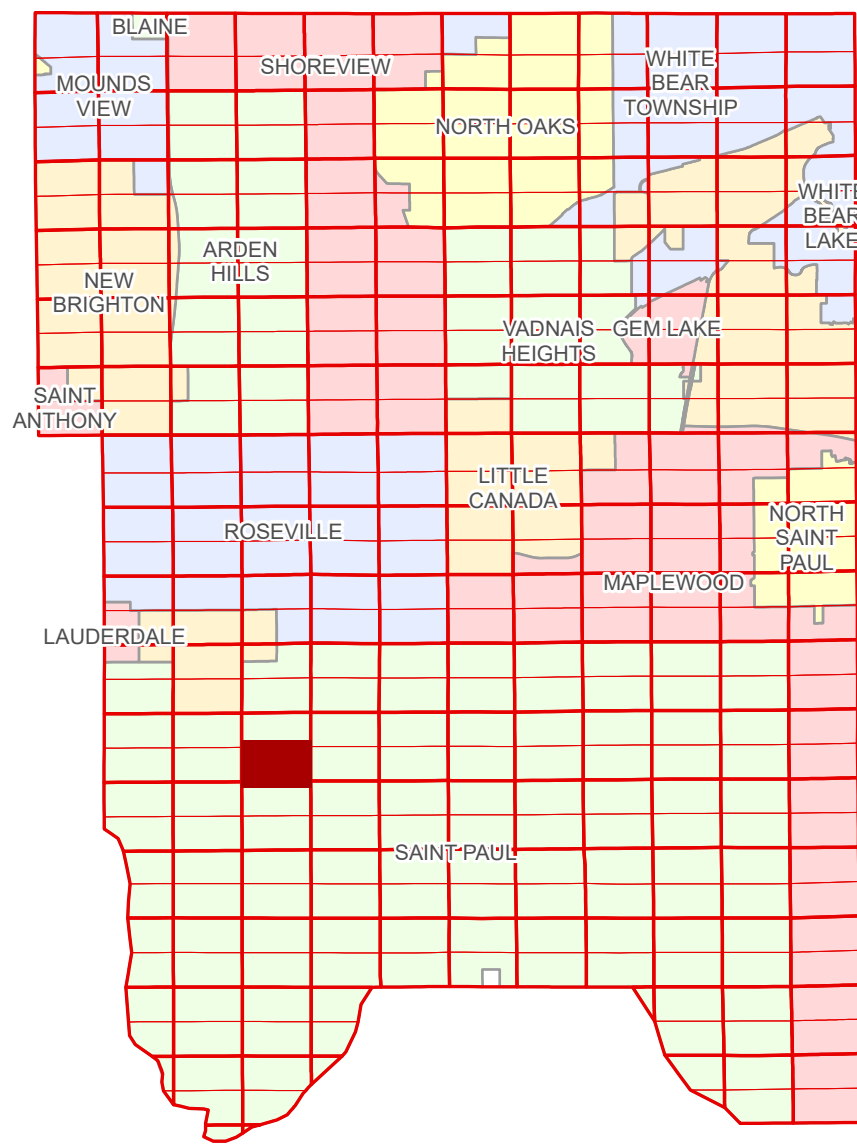


S Half
Section 27
T 29 N
R 23 W

Ramsey County Minnesota Parcel Map

Ramsey County
Section 27

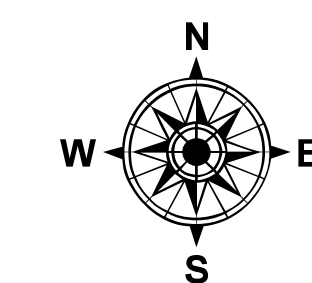


Ramsey County
Section 28

Section 26
Ramsey County

Legend	
	Section
	Quarter
	Quarter Quarter
	State Right of Way
	County Right of Way
	Municipal Right of Way
	Subdivision Plat
	Registered Land Survey
	Auditor's Subdivision
	Division Type
	Lot
	Outlot
	Tract
	Metes & Bounds
	Tax Parcel Type
	Personal Property
	State Assessed Property
	Real Property
	Easement Type
	Pedestrian
	Private Access
	Private Driveway
	Utility, Electric
	Utility, Storm & Sanitary Sewer
	Utility, Water
	Utility, Unidentified
	Drainage & Utility

Section 34
Ramsey County



0 4590 180 270 360 Feet

1" = 200'
1:2,400

S272923

1/3/2025