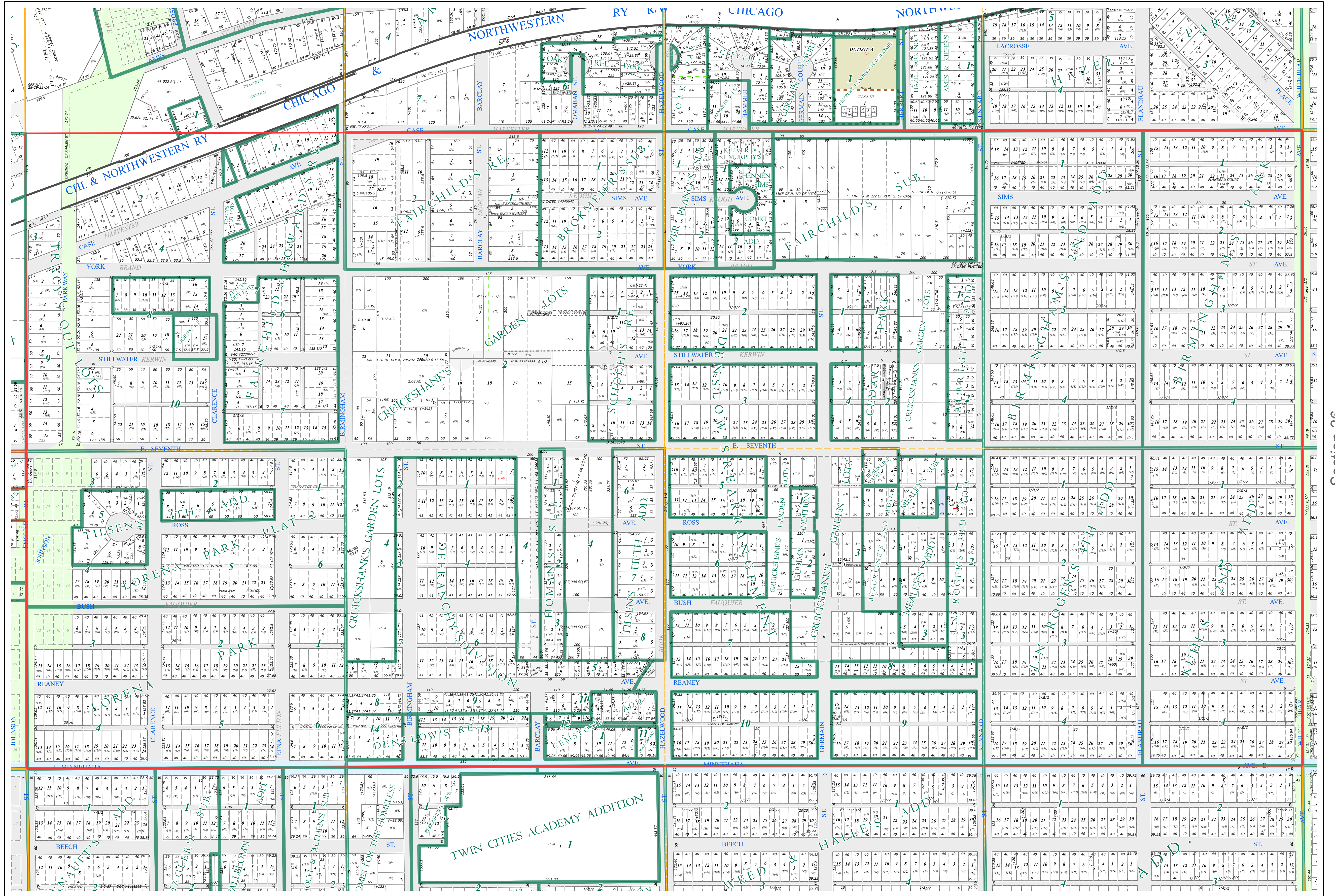
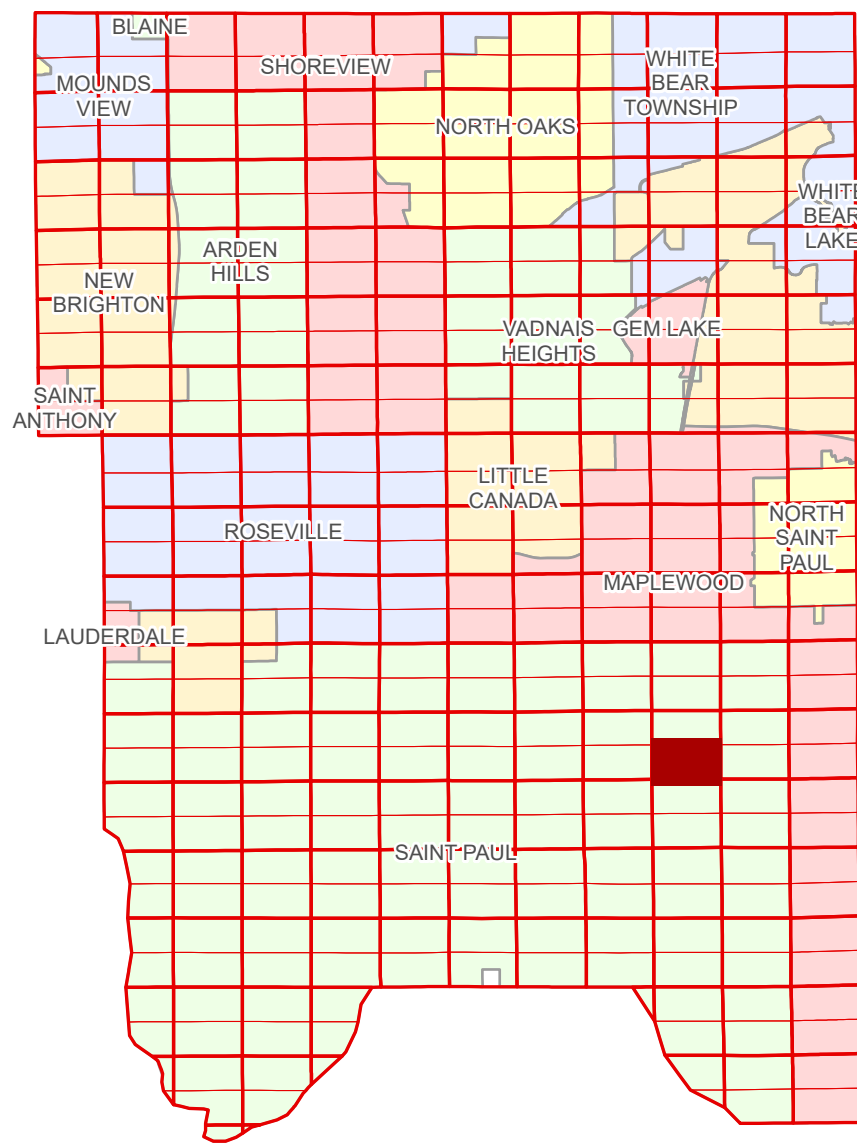


S Half
Section 27
T 29 N
R 22 W

Ramsey County Minnesota Parcel Map

Ramsey County
Section 27



Ramsey County
Section 28

Section 26
Ramsey County

Section 34
Ramsey County

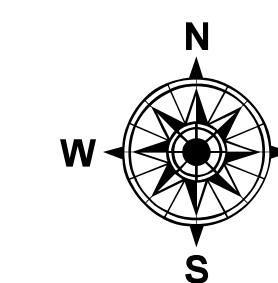
Legend	
	Section
	Quarter
	Quarter Quarter
	State Right of Way
	County Right of Way
	Municipal Right of Way
	Subdivision Type
	Subdivision Plat
	Auditors's Subdivision
	Division Type
	Lot
	Other
	Metes & Bounds
	Tax Parcel Type
	State Assessed Property
	Real Property
	Easement Type
	Private Driveway

The information on this map is a compilation of Ramsey County Records. THE COUNTY DOES NOT WARRANT OR GUARANTEE THE ACCURACY OF THIS DATA. The County disclaims any liability for any injuries, time delays, or expenses you may suffer if you rely in any manner on the accuracy of this data.

NOTE: This is not an official Ramsey County tax lot map. This is based on the data available in the Geographic Information System, which may vary from tax data officially recorded in the Tax System. For an official tax map, please contact the Office of Property Records and Revenue.

Produced by Information Services Enterprise GIS Division
RCGISMData@Co.Ramsey.MN.US

651-266-2000
AskPropertyTaxandRecords@co.ramsey.mn.us



0 4590 180 270 360 Feet

1" = 200'
1:2400