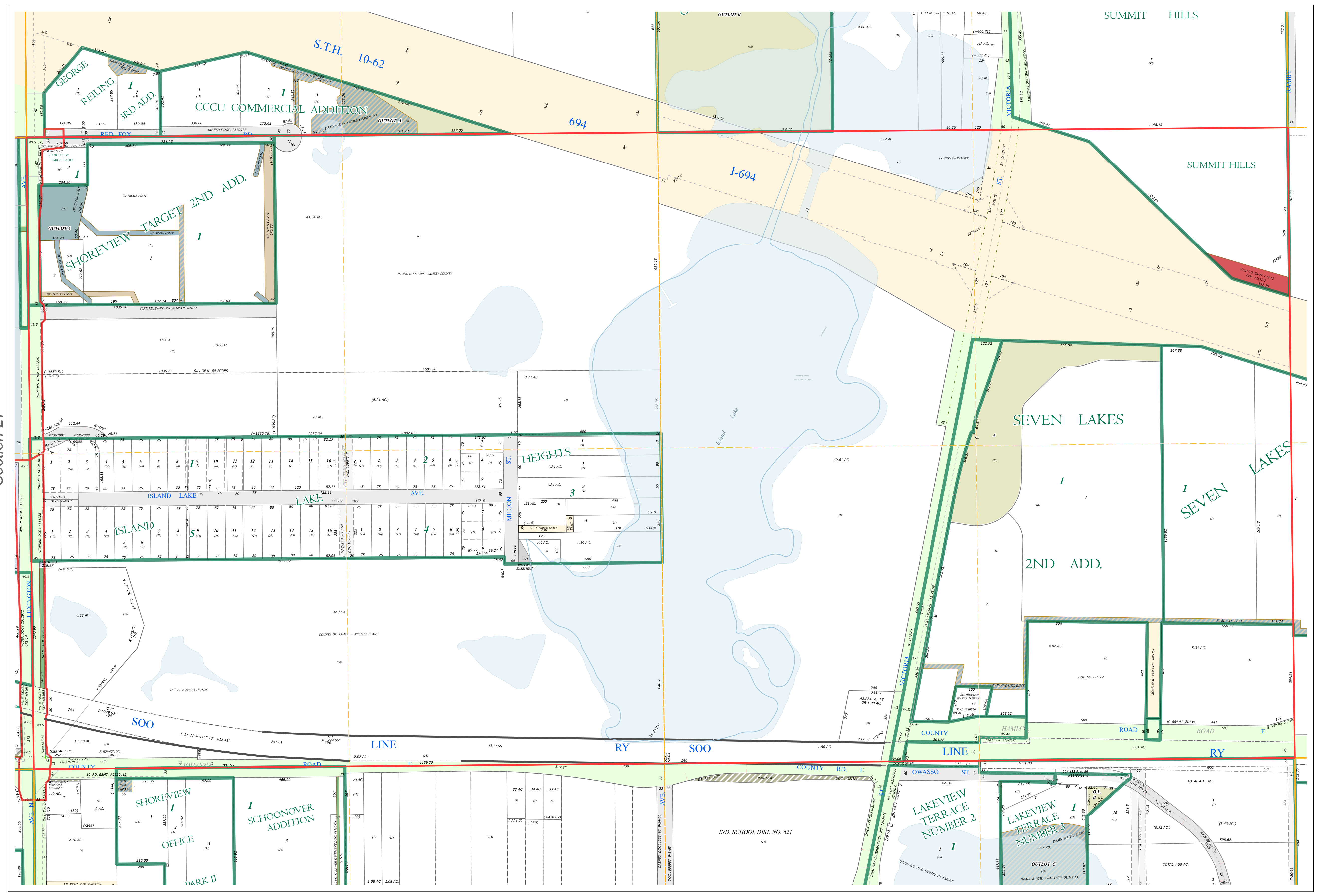
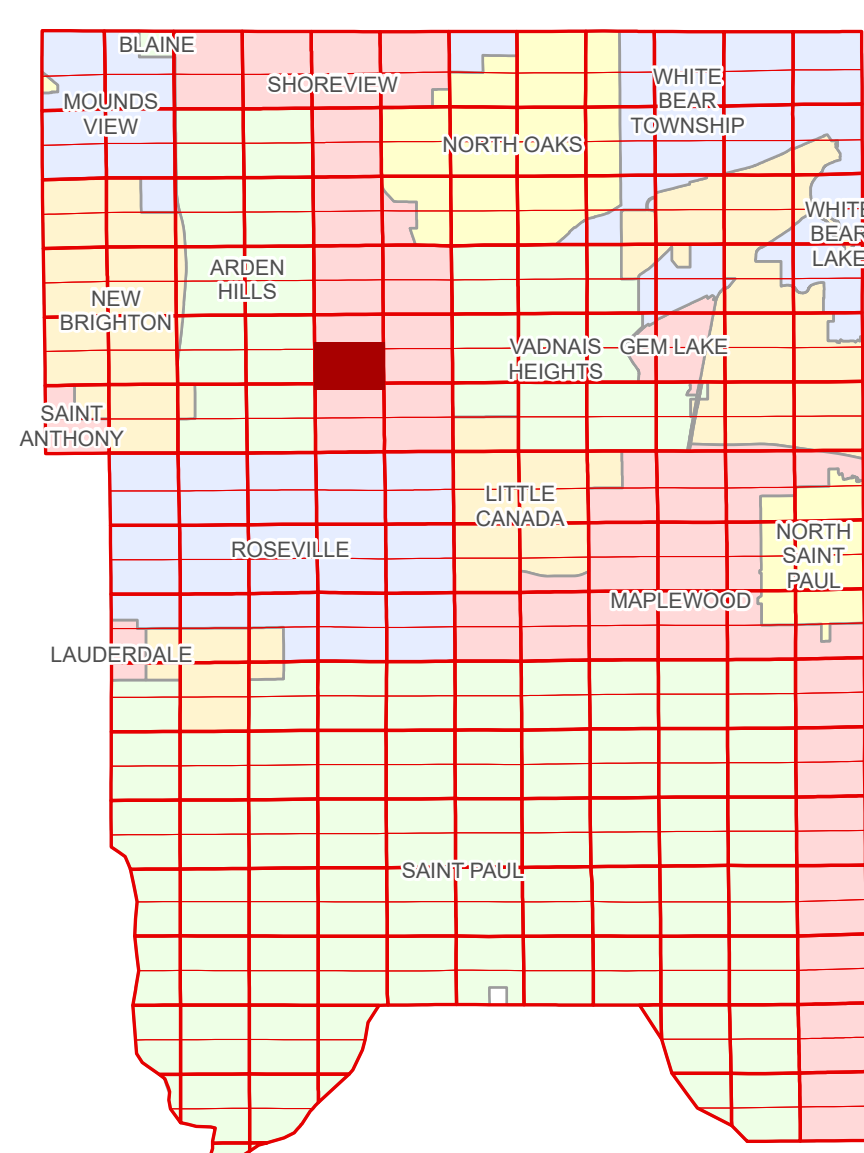


# Ramsey County Minnesota Parcel Map

Ramsey County  
Section 26

S Half  
Section 26  
T 30 N  
R 23 W



Ramsey County  
Section 27

Section 25  
Ramsey County

**Legend**

Section	Metes & Bounds
Quarter	Tax Parcel Type
Quarter Quarter	Personal Property
Federal Right of Way	State Assessed Property
County Right of Way	Real Property
Municipal Right of Way	<b>Easement Type</b>
<b>Subdivision Type</b>	Private Access
Subdivision Plat	Private Driveway
Highway RoW Plat	Utility, Electric
<b>Division Type</b>	Utility, Storm & Sanitary Sewer
Lot	Utility, Unidentified
Other	Drainage & Utility
Outlot	Drainage

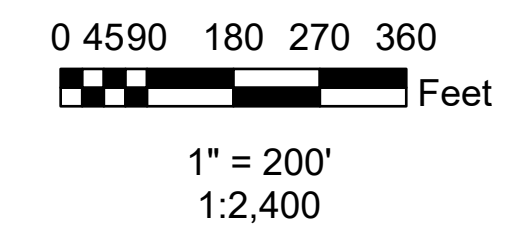
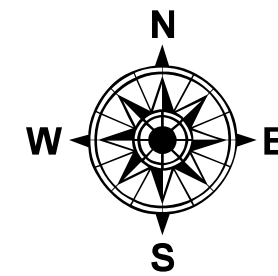
The information on this map is a compilation of Ramsey County Records. THE COUNTY DOES NOT WARRANT OR GUARANTEE THE ACCURACY OF THIS DATA. The County disclaims any liability for any injuries, time delays, or expenses you may suffer if you rely in any manner on the accuracy of this data.

Produced by Information Services Enterprise GIS Division  
RCGISMetaData@Co.Ramsey.MN.US

NOTE: This is not an official Ramsey County tax lot map. This is based on the data available in the Geographic Information System, which may vary from tax data officially recorded in the Tax System. For an official tax map, please contact the Office of Property Records and Revenue.

651-266-2000  
AskPropertyTaxandRecords@co.ramsey.mn.us

Section 35  
Ramsey County



**S263023**  
1/3/2025