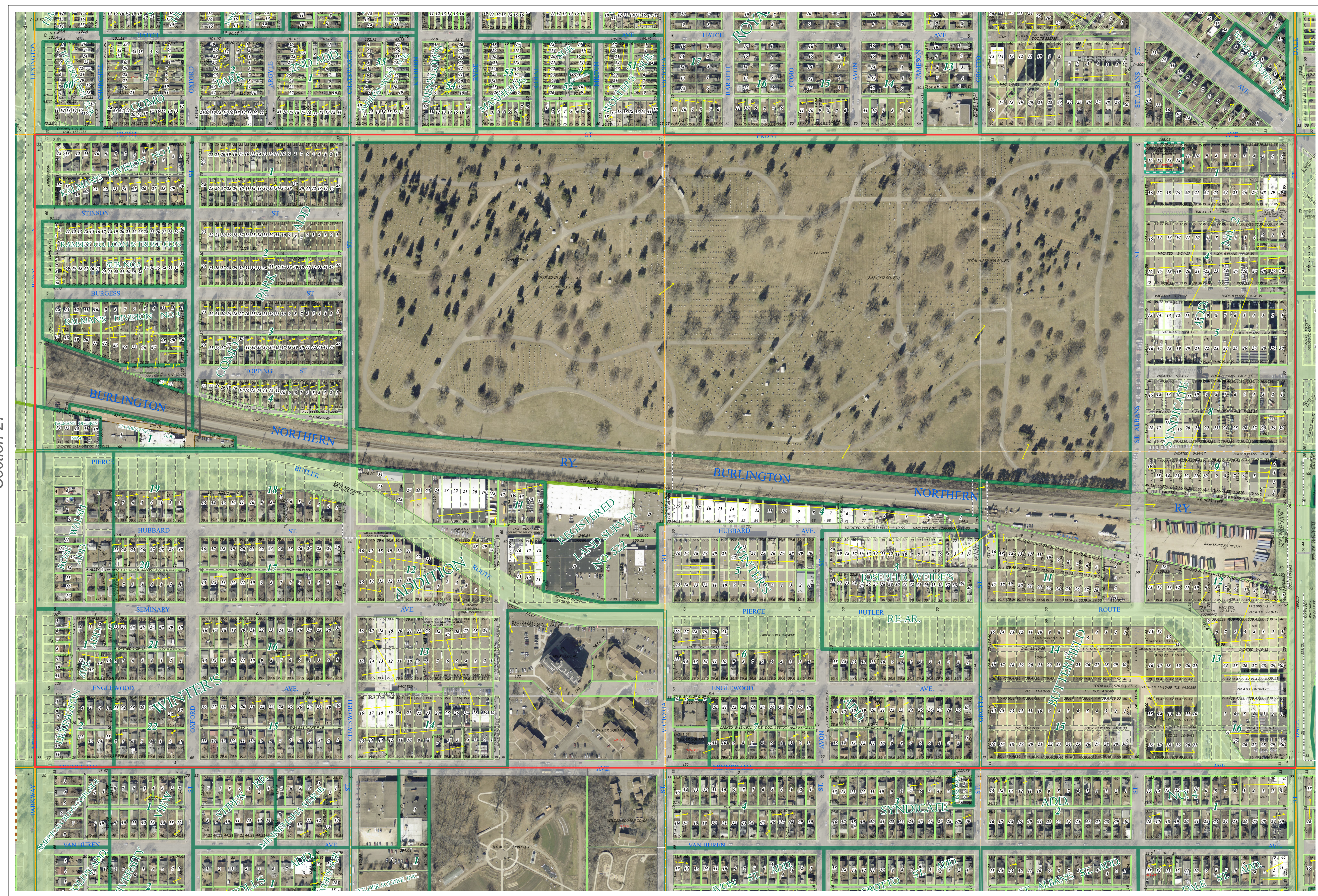
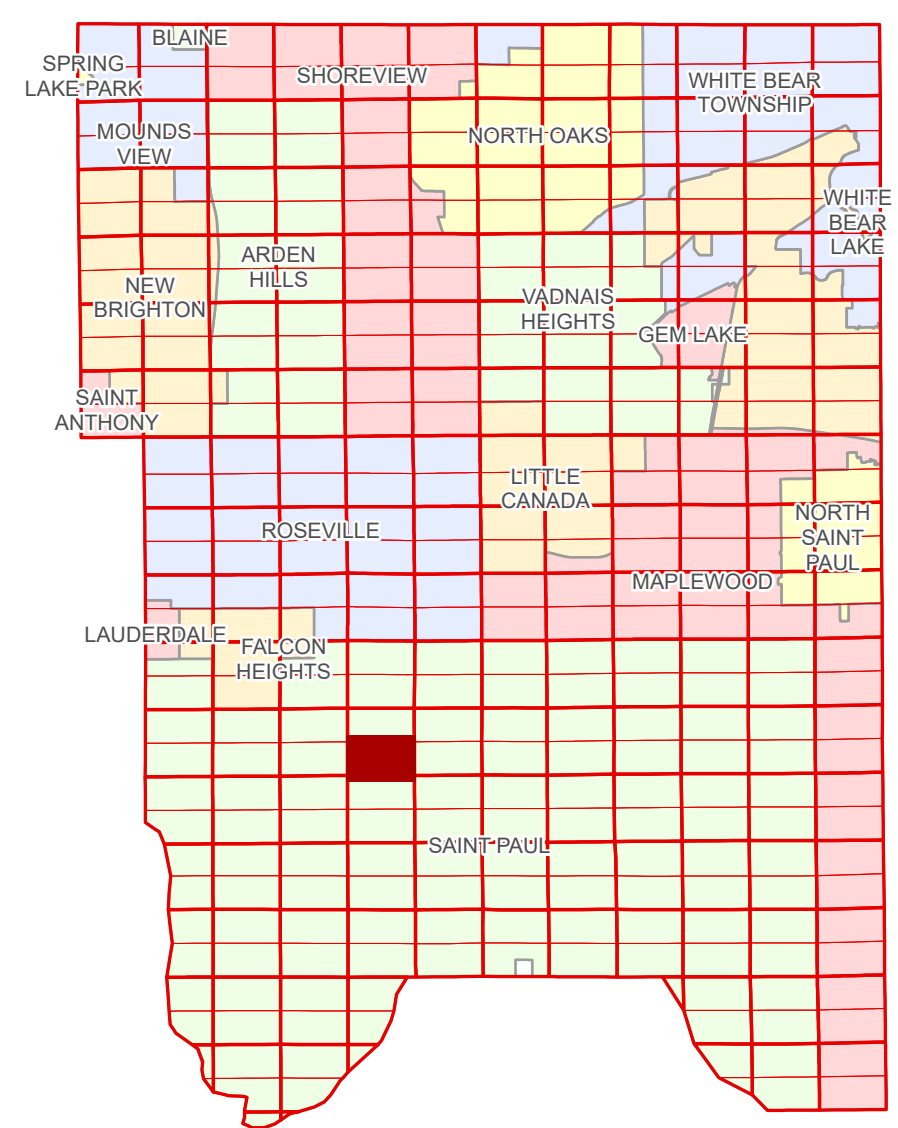


Ramsey County Minnesota Parcel Map

S Half
Section 26
T 29 N
R 23 W

Ramsey County
Section 26



Section 25
Ramsey County

Legend			
	Section		Metes & Bounds
	Quarter		Tax Parcel Type
	Quarter Quarter		State Assessed Property
	County Right of Way		Real Property
	Municipal Right of Way		Easement Type
Subdivision Type			Pedestrian
	Subdivision Plat		Private Access
	Registered Land Survey		Private Driveway
	Condominium		Utility, Storm & Sanitary Sewer
Division Type			Utility, Unidentified
	Lot		

The information on this map is a compilation of Ramsey County Records. THE COUNTY DOES NOT WARRANT OR GUARANTEE THE ACCURACY OF THIS DATA. The County disclaims any liability for any injuries, time delays, or expenses you may suffer if you rely in any manner on the accuracy of this data.

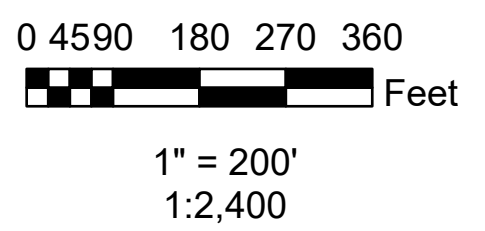
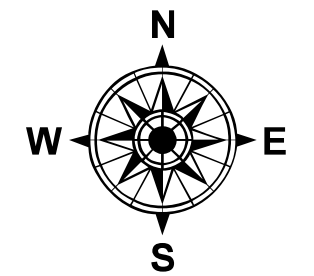
Produced by Information Services Enterprise GIS Division
RCGSMetaData@Co.Ramsey.MN.US

NOTE: This is not an official Ramsey County tax lot map. This is based on the data available in the Geographic Information System, which may vary from tax data officially recorded in the Tax System. For an official tax map, please contact the Office of Property Records and Revenue.

651-266-2000
AskPropertyTaxandRecords@co.ramsey.mn.us

Section 35
Ramsey County

Aerial Imagery Date: March 11 - April 4, 2024



S262923

1/3/2025