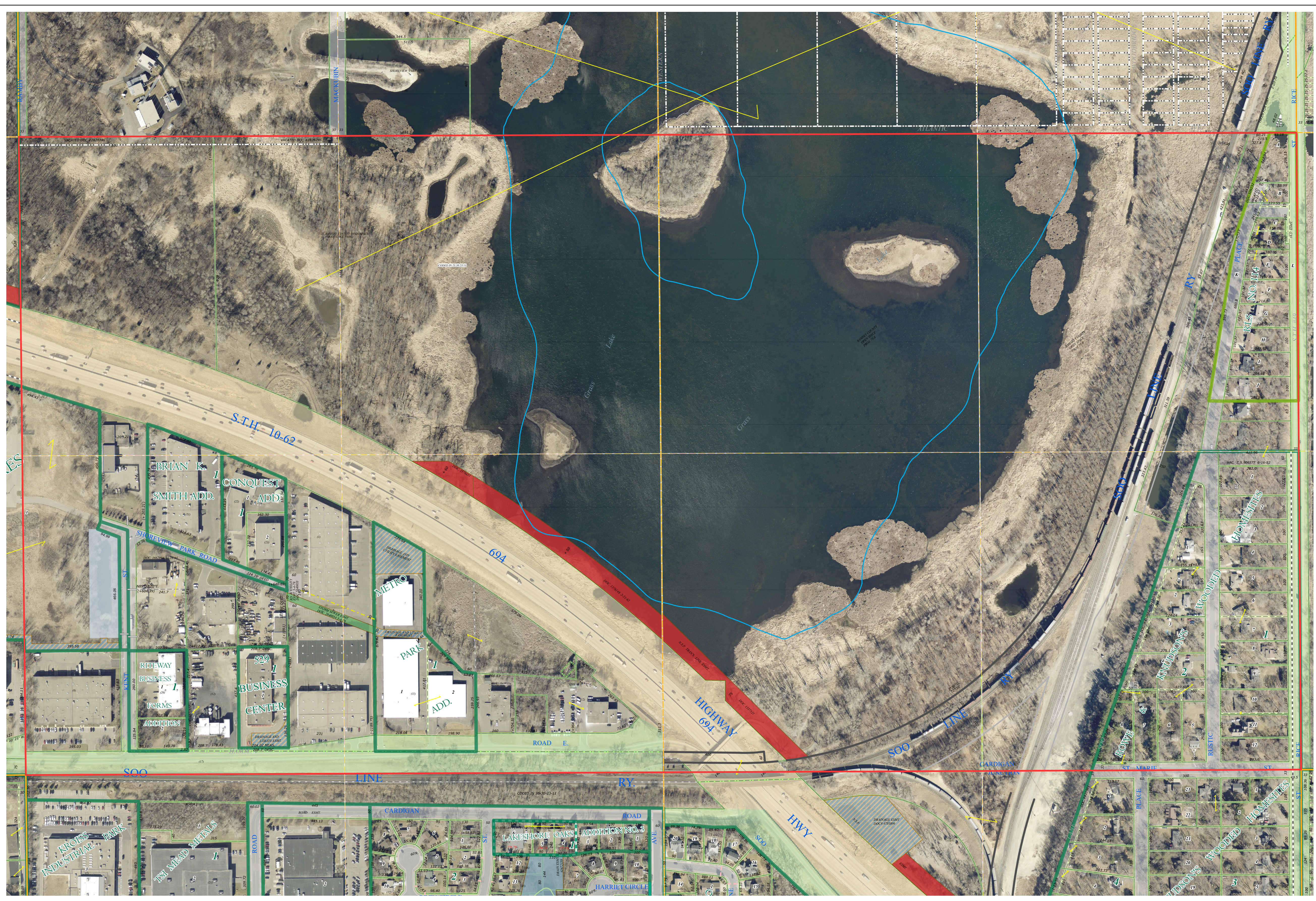
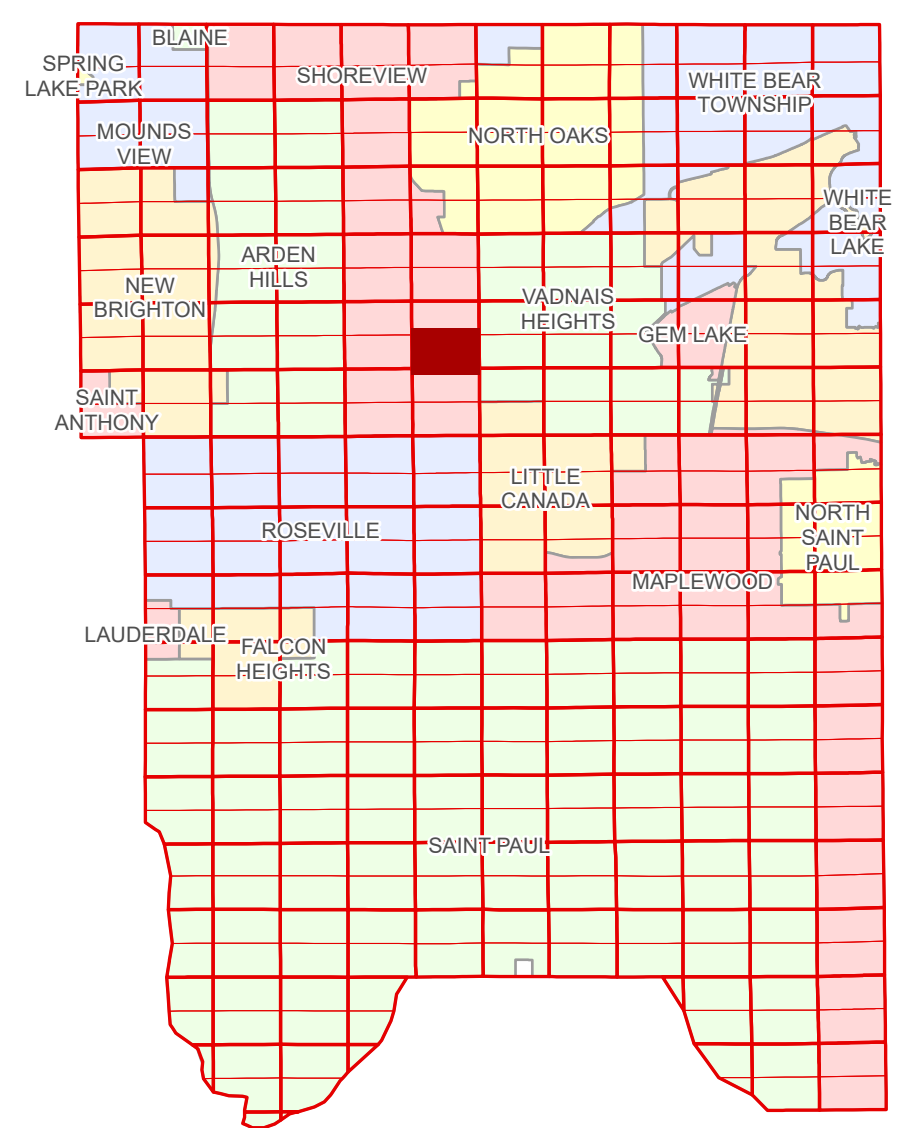


# Ramsey County Minnesota Parcel Map

Ramsey County  
Section 25

S Half  
Section 25  
T 30 N  
R 23 W



Ramsey County  
Section 26

Section 30  
Ramsey County

Legend			
	Section		Metes & Bounds
	Quarter		Tax Parcel Type
	Quarter Quarter		Personal Property
	Federal Right of Way		State Assessed Property
	County Right of Way		Real Property
	Municipal Right of Way		Easement Type
	Subdivision Type		Ponding
	Subdivision Plat		Utility, Electric
	Registered Land Survey		Utility, Storm & Sanitary Sewer
	Division Type		Drainage & Utility
	Lot		

Aerial Imagery Date: March 11 - April 4, 2024



The information on this map is a compilation of Ramsey County Records. THE COUNTY DOES NOT WARRANT OR GUARANTEE THE ACCURACY OF THIS DATA. The County disclaims any liability for any injuries, time delays, or expenses you may suffer if you rely in any manner on the accuracy of this data.

Produced by Information Services Enterprise GIS Division  
RCGISMetaData@Co.Ramsey.MN.US

NOTE: This is not an official Ramsey County tax lot map. This is based on the data available in the Geographic Information System, which may vary from tax data officially recorded in the Tax System. For an official tax map, please contact the Office of Property Records and Revenue.

651-266-2000  
AskPropertyTaxandRecords@co.ramsey.mn.us

Section 36  
Ramsey County



S253023  
1/3/2025