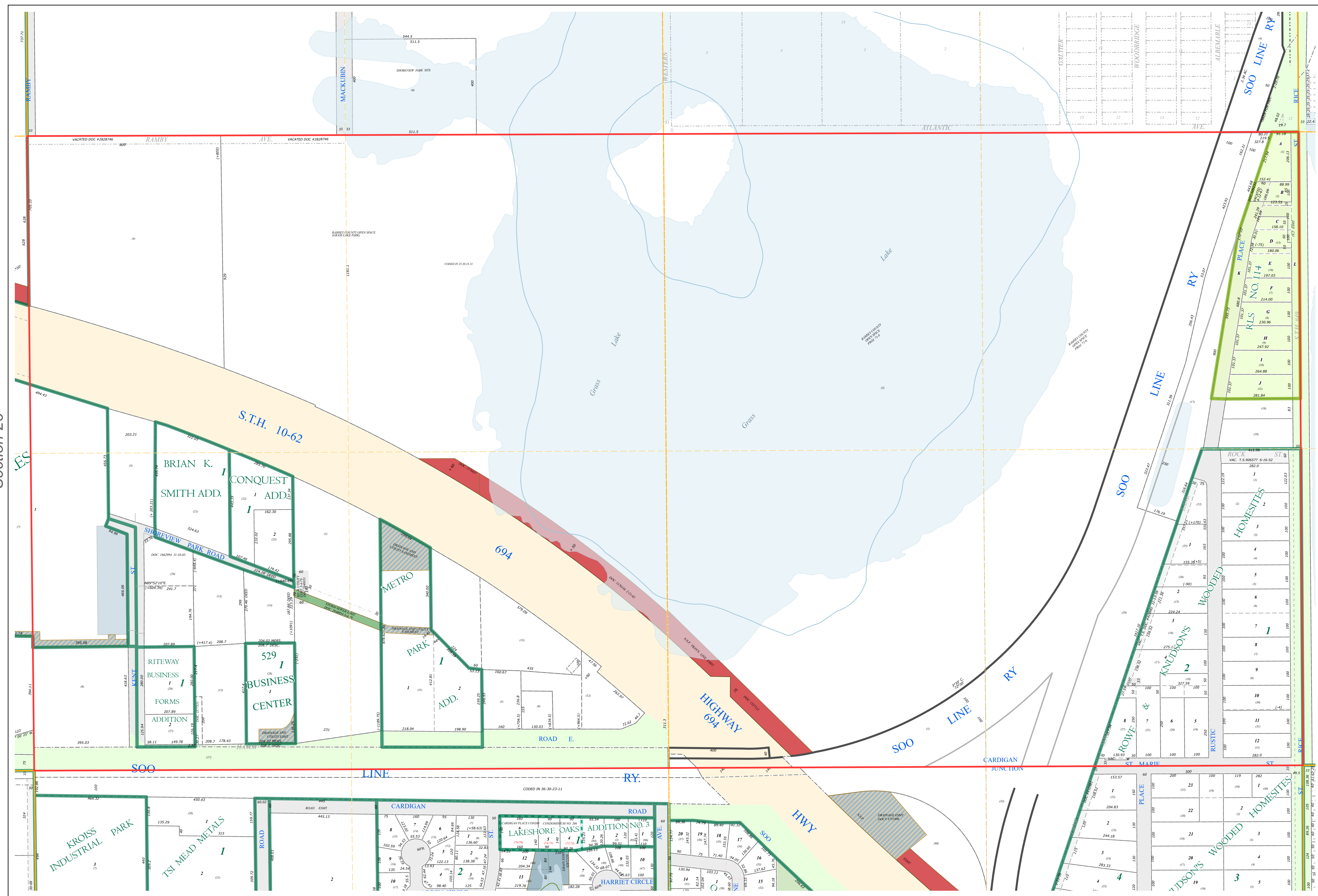
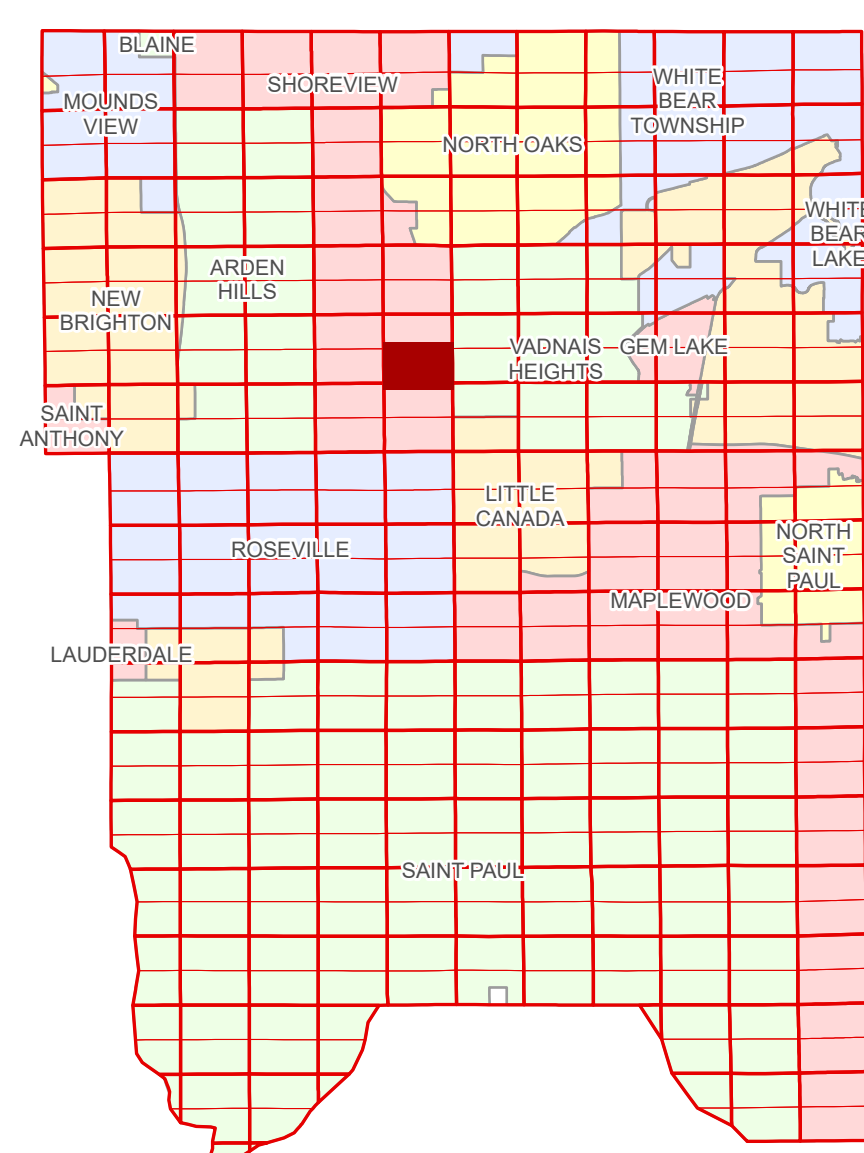


Ramsey County Minnesota Parcel Map

Ramsey County
Section 25

S Half
Section 25
T 30 N
R 23 W



Ramsey County
Section 26

Section 30
Ramsey County

Legend

- Section
- Quarter
- Quarter Quarter
- Federal Right of Way
- County Right of Way
- Municipal Right of Way
- Subdivision Type
 - Subdivision Plat
 - Registered Land Survey
- Division Type
 - Lot
 - Tract
- Metes & Bounds
- Tax Parcel Type**
 - Personal Property
 - State Assessed Property
 - Real Property
- Easement Type**
 - Ponding
 - Utility, Electric
 - Utility, Storm & Sanitary Sewer
 - Drainage & Utility

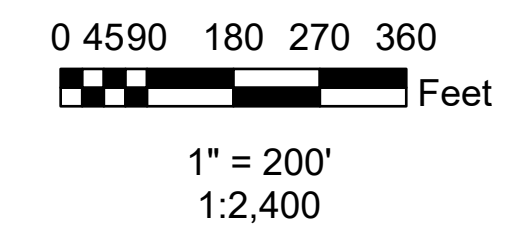
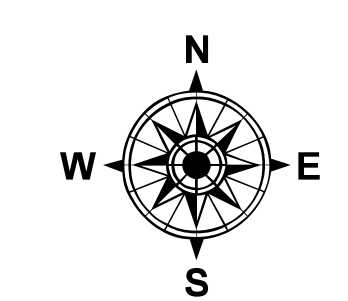
The information on this map is a compilation of Ramsey County Records. THE COUNTY DOES NOT WARRANT OR GUARANTEE THE ACCURACY OF THIS DATA. The County disclaims any liability for any injuries, time delays, or expenses you may suffer if you rely in any manner on the accuracy of this data.

Produced by Information Services Enterprise GIS Division
RCGISMetaData@Co.Ramsey.MN.US

NOTE: This is not an official Ramsey County tax lot map. This is based on the data available in the Geographic Information System, which may vary from tax data officially recorded in the Tax System. For an official tax map, please contact the Office of Property Records and Revenue.

651-266-2000
AskPropertyTaxandRecords@co.ramsey.mn.us

Section 36
Ramsey County



S253023
1/3/2025