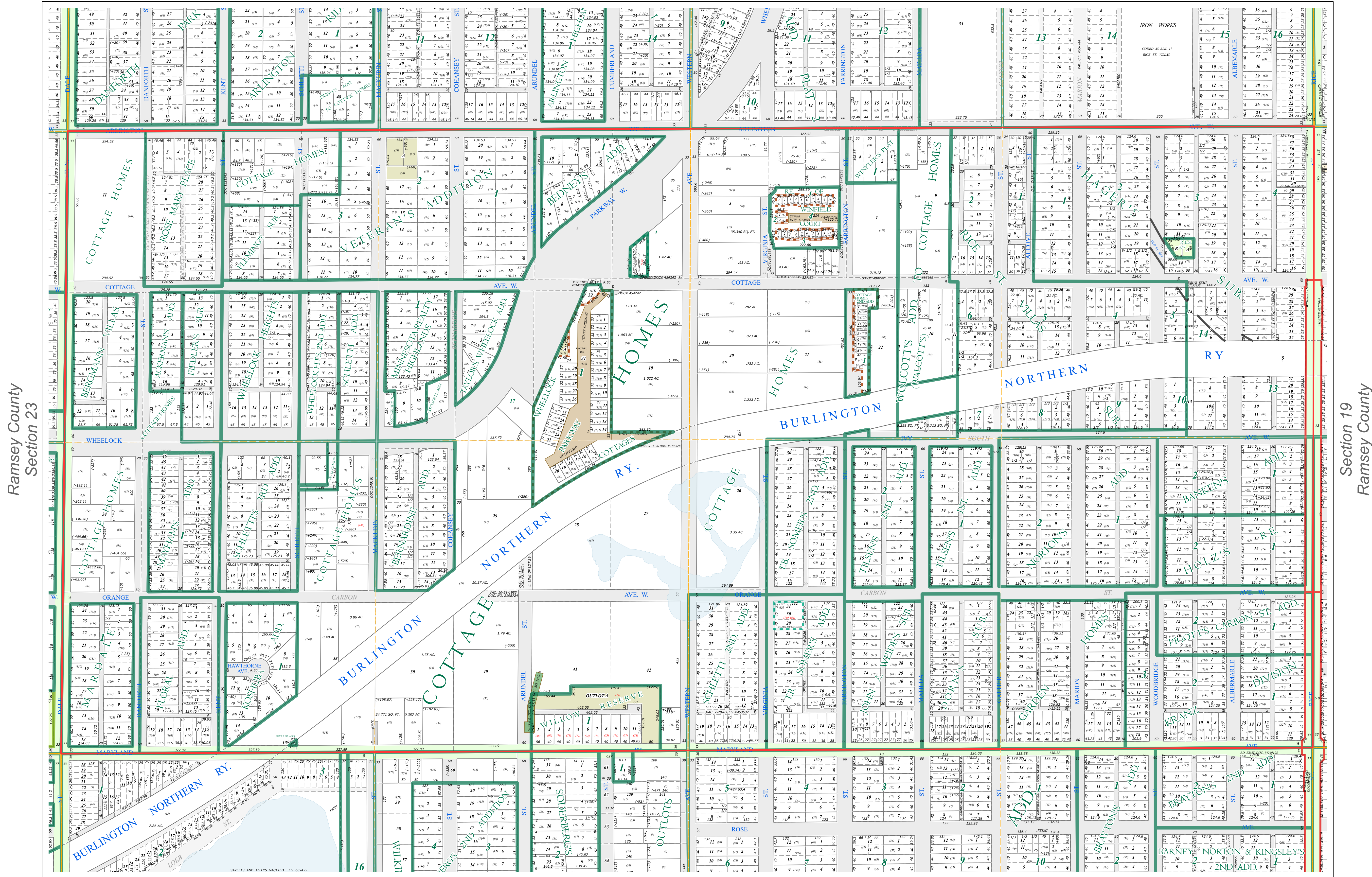
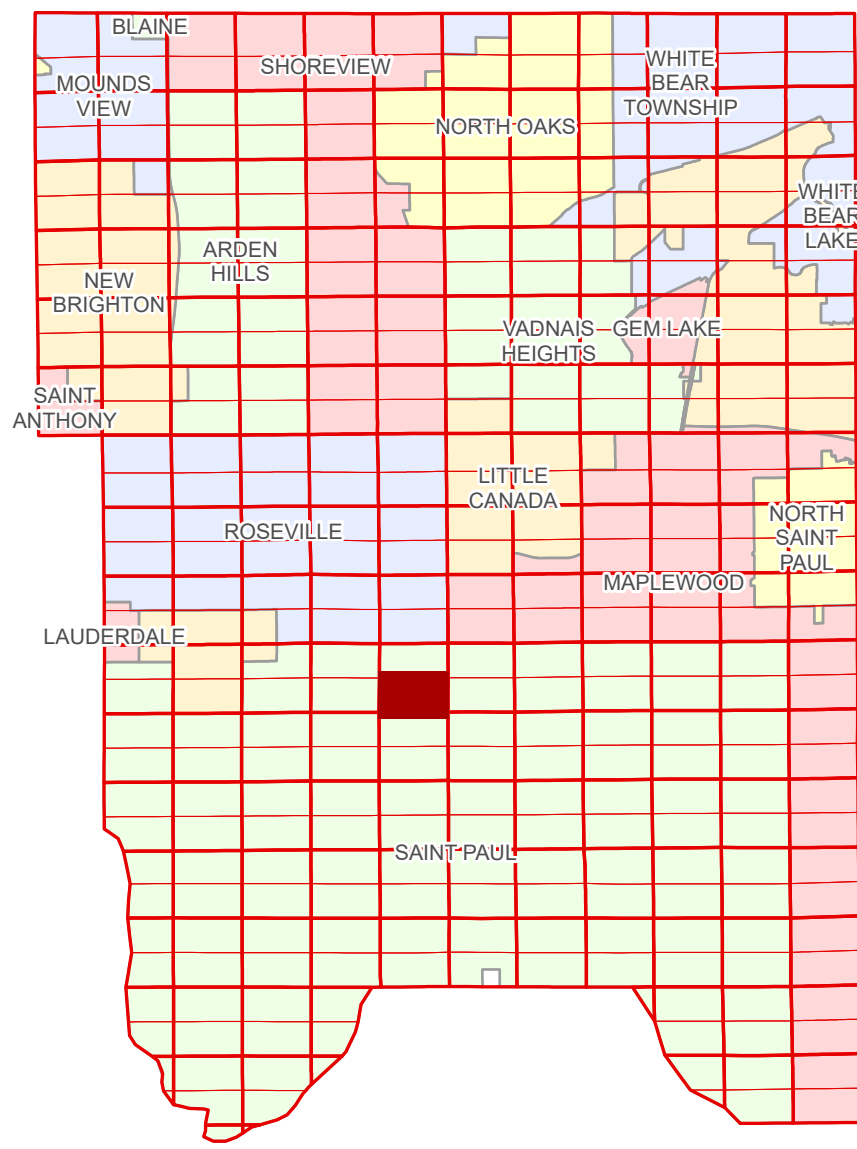


S Half
Section 24
T 29 N
R 23 W

Ramsey County Minnesota Parcel Map

Ramsey County
Section 24



Ramsey County
Section 23

Section 19
Ramsey County

Section 25
Ramsey County

Legend

Section	Division Type
Quarter	Lot
Quarter Quarter	Outlot
County Right of Way	Tract
Municipal Right of Way	Metes & Bounds
Subdivision Plat	Tax Parcel Type
Registered Land Survey	State Assessed Property
Highway RoW Plat	Real Property
Planned Community	Easement Type
Condominium	Private Driveway
	Utility, Storm & Sanitary Sewer
	Utility, Unidentified



The information on this map is a compilation of Ramsey County Records. THE COUNTY DOES NOT WARRANT OR GUARANTEE THE ACCURACY OF THIS DATA. The County disclaims any liability for any injuries, time delays, or expenses you may suffer if you rely in any manner on the accuracy of this data.

Produced by Information Services Enterprise GIS Division
RCGISMetaData@Co.Ramsey.MN.US

NOTE: This is not an official Ramsey County tax lot map. This is based on the data available in the Geographic Information System, which may vary from tax data officially recorded in the Tax System. For an official tax map, please contact the Office of Property Records and Revenue.

651-266-2000
AskPropertyTaxandRecords@co.ramsey.mn.us

0 4590 180 270 360 Feet

1" = 200'
1:2400

S242923

1/3/2025