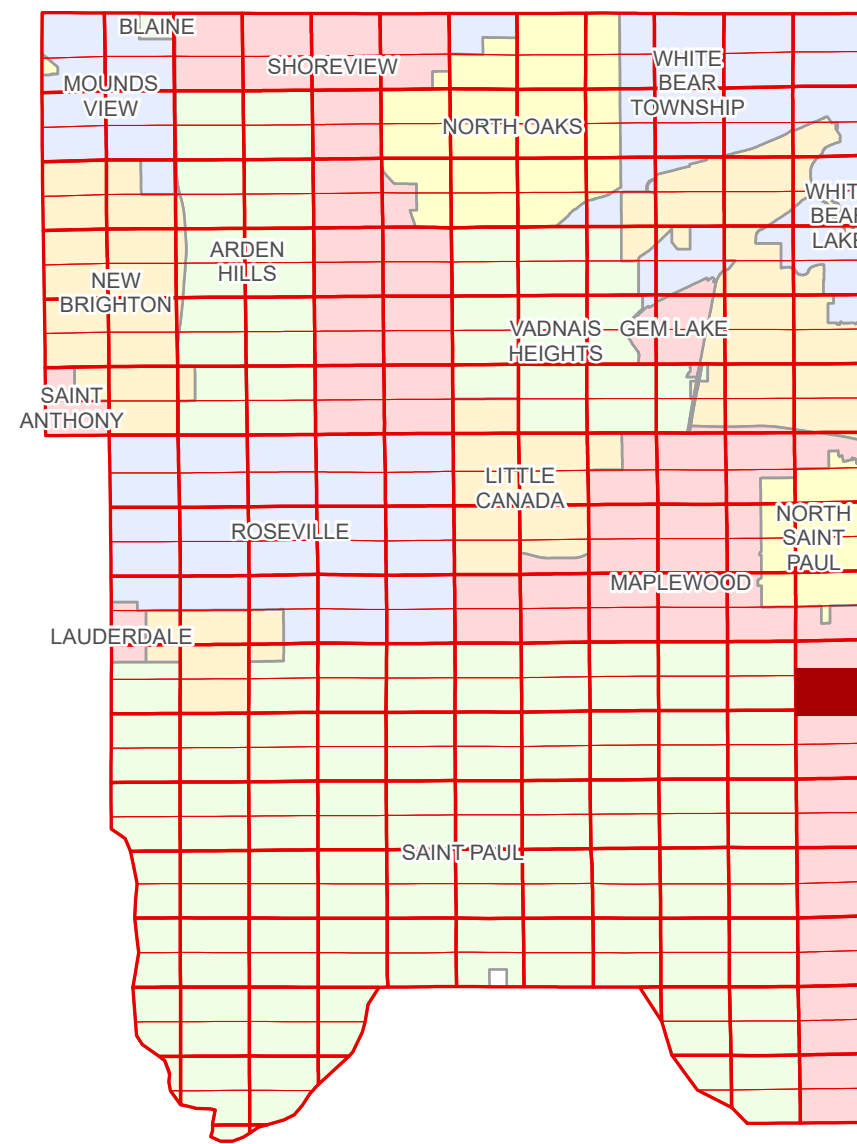


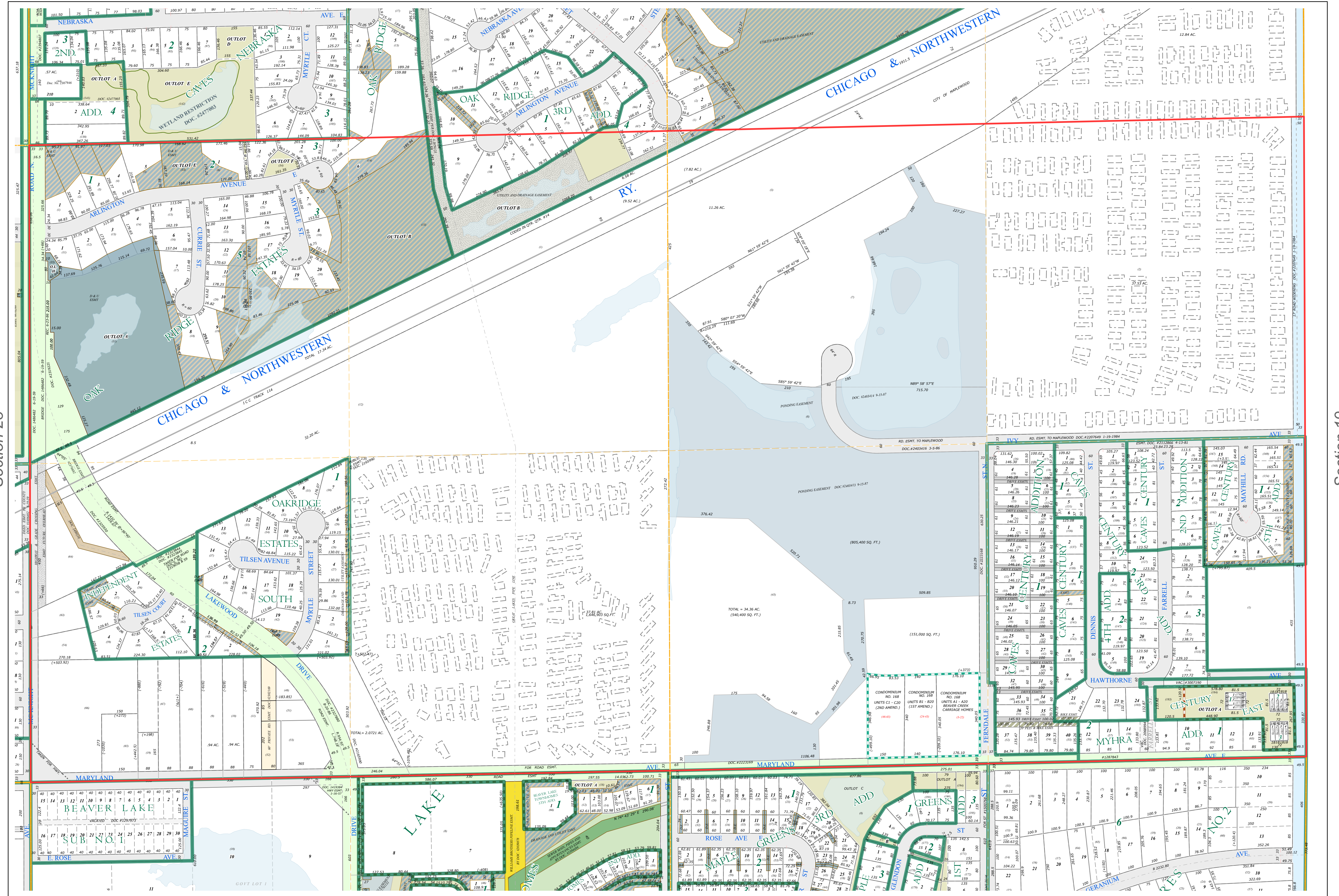
S Half
Section 24
T 29 N
R 22 W

Ramsey County Minnesota Parcel Map

Ramsey County
Section 24



Ramsey County
Section 23



Section 19
Washington County

Legend	
	Section
	Quarter
	Quarter Quarter
	State Right of Way
	County Right of Way
	Municipal Right of Way
	Subdivision Plat
	Planned Community
	Condominium
	Division Type
	Lot
	Outlot
	Metes & Bounds
	Tax Parcel Type
	State Assessed Property
	Manufactured Home
	Real Property
	Ponding
	Private Access
	Private Driveway
	Utility, Unidentified
	Drainage & Utility
	Drainage
	Misc Easements

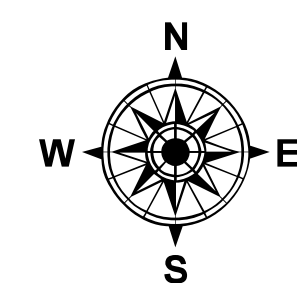
The information on this map is a compilation of Ramsey County Records. THE COUNTY DOES NOT WARRANT OR GUARANTEE THE ACCURACY OF THIS DATA. The County disclaims any liability for any injuries, time delays, or expenses you may suffer if you rely in any manner on the accuracy of this data.

NOTE: This is not an official Ramsey County tax lot map. This is based on the data available in the Geographic Information System, which may vary from tax data officially recorded in the Tax System. For an official tax map, please contact the Office of Property Records and Revenue.

Produced by Information Services Enterprise GIS Division
RCGSMetaData@Co.Ramsey.MN.US

651-266-2000
AskPropertyTaxandRecords@co.ramsey.mn.us

Section 25
Ramsey County



0 450 180 270 360
Feet

1" = 200'
1:2,400

S242922

1/3/2025