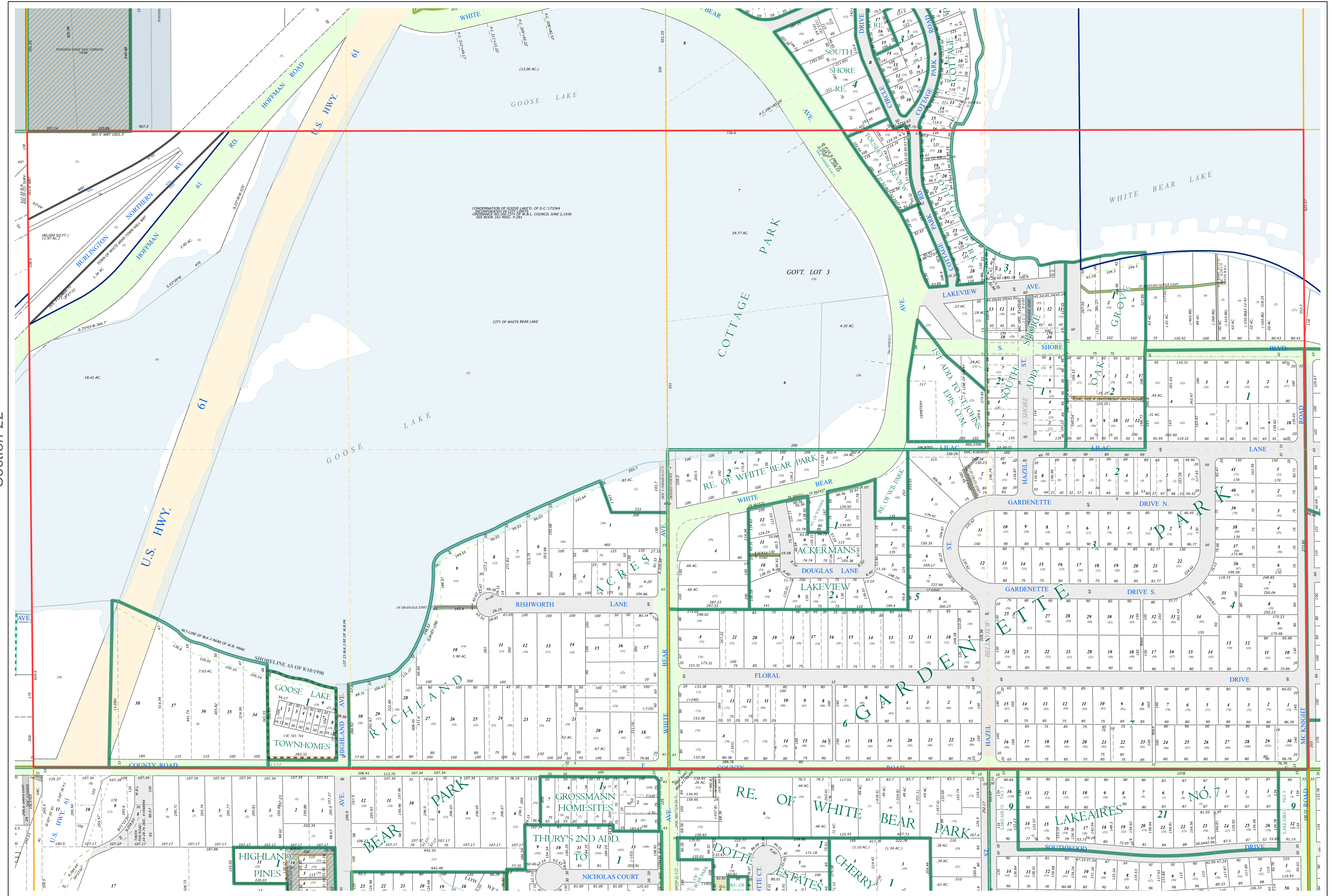
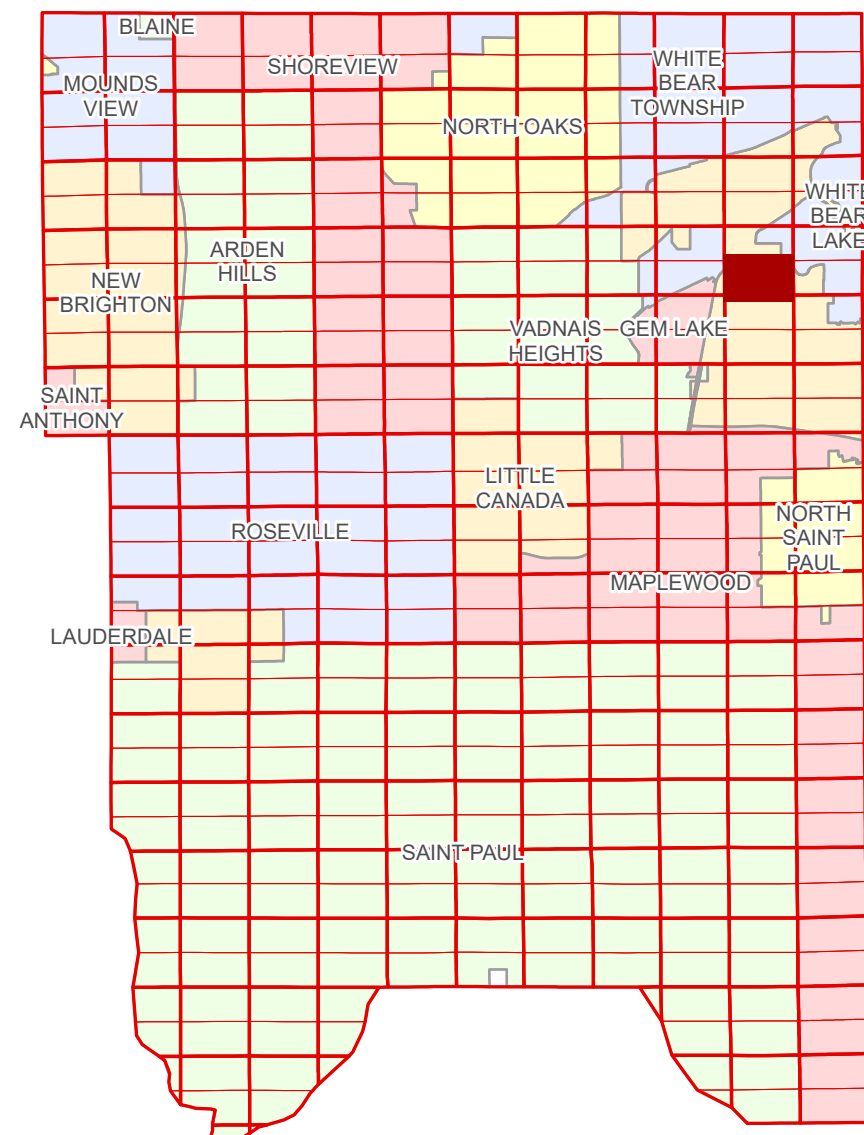


S Half  
Section 23  
T 30 N  
R 22 W

# Ramsey County Minnesota Parcel Map

Ramsey County  
Section 23



Ramsey County  
Section 22

Section 24  
Ramsey County

**Legend**

- Section
- Quarter
- Quarter Quarter
- Federal Right of Way
- County Right of Way
- Municipal Right of Way
- Subdivision Type
- Planned Community
- Division Type
- Lot
- Metes & Bounds

**Tax Parcel Type**

- Personal Property
- State Assessed Property
- Real Property
- Ponding
- Private Access
- Utility, Storm & Sanitary Sewer
- Drainage & Utility
- Drainage
- Misc Easements

The information on this map is a compilation of Ramsey County Records. THE COUNTY DOES NOT WARRANT OR GUARANTEE THE ACCURACY OF THIS DATA. The County disclaims any liability for any injuries, time delays, or expenses you may suffer if you rely in any manner on the accuracy of this data.

Produced by Information Services Enterprise GIS Division  
RCGISMataData@Co.Ramsey.MN.US

NOTE: This is not an official Ramsey County tax lot map. This is based on the data available in the Geographic Information System, which may vary from tax data officially recorded in the Tax System. For an official tax map, please contact the Office of Property Records and Revenue.

651-266-2000  
AskPropertyTaxandRecords@co.ramsey.mn.us

Section 26  
Ramsey County



0 450 180 270 360 Feet

1" = 200'  
1:2,400

S233022  
1/3/2025