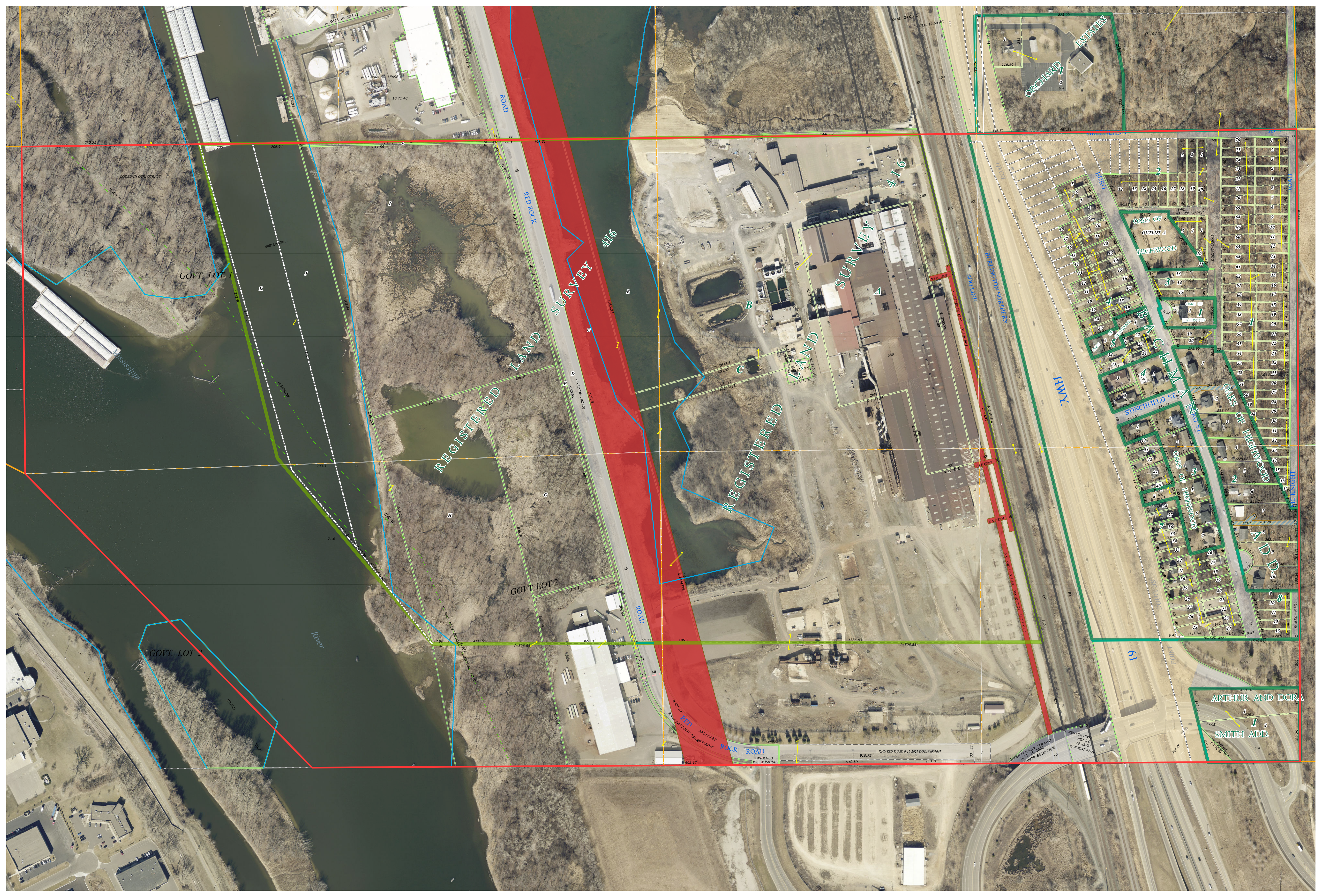
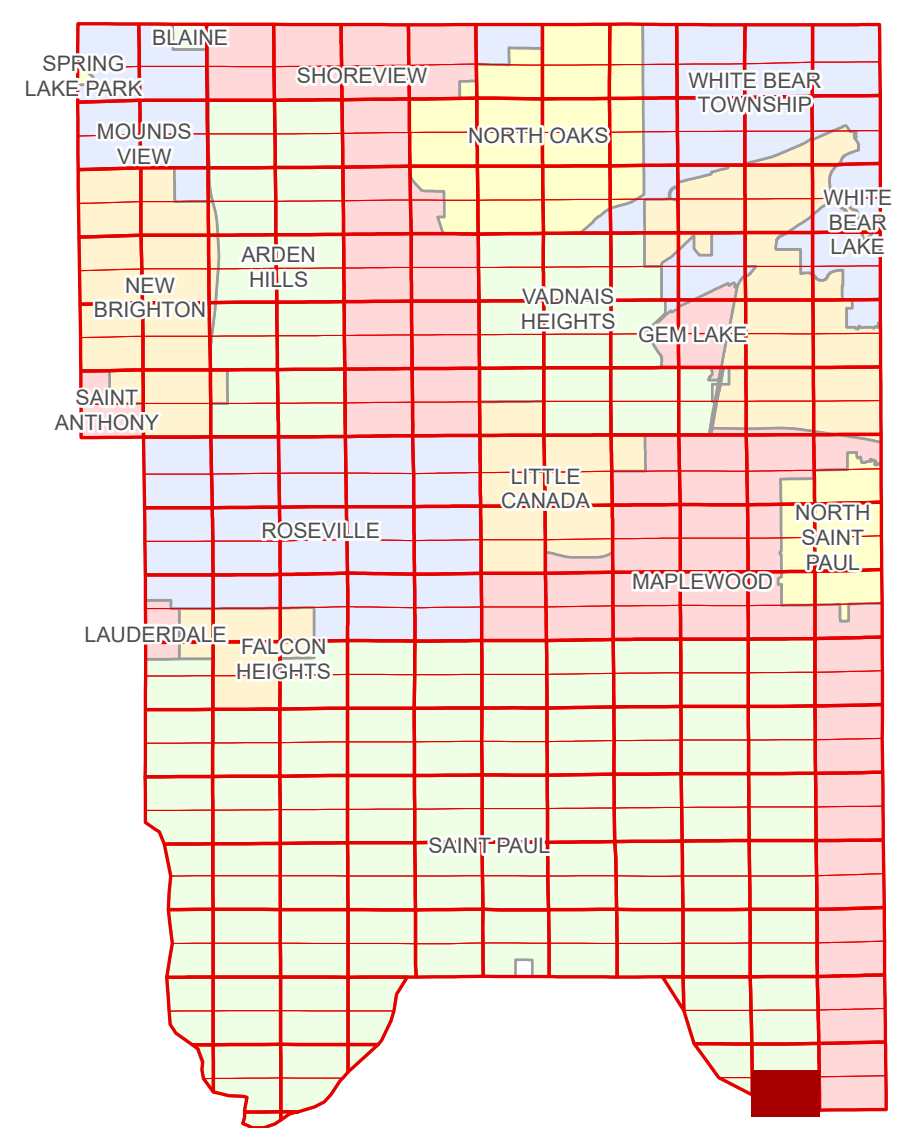


# Ramsey County Minnesota Parcel Map

Ramsey County  
Section 23

S Half  
Section 23  
T 28 N  
R 22 W



Ramsey County  
Section 22

Section 24  
Ramsey County

Legend			
	Section		Division Type
	Quarter		Lot
	Quarter Quarter		Metes & Bounds
	Federal Right of Way		Tax Parcel Type
	Municipal Right of Way		State Assessed Property
	Subdivision Type		Easement Type
	Subdivision Plat		Utility, Electric
	Registered Land Survey		Drainage & Utility

Aerial Imagery Date: March 11 - April 4, 2024



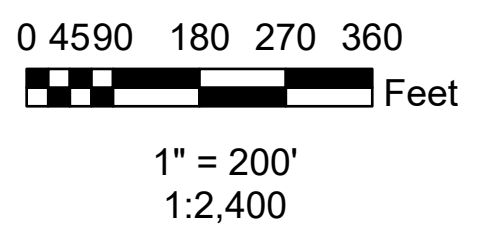
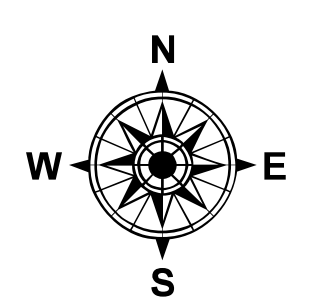
The information on this map is a compilation of Ramsey County Records. THE COUNTY DOES NOT WARRANT OR GUARANTEE THE ACCURACY OF THIS DATA. The County disclaims any liability for any injuries, time delays, or expenses you may suffer if you rely in any manner on the accuracy of this data.

NOTE: This is not an official Ramsey County tax lot map. This is based on the data available in the Geographic Information System, which may vary from tax data officially recorded in the Tax System. For an official tax map, please contact the Office of Property Records and Revenue.

Produced by Information Services Enterprise GIS Division  
RCGISMetaData@Co.Ramsey.MN.US

651-266-2000  
AskPropertyTaxandRecords@co.ramsey.mn.us

Section 26  
Washington County



S232822

1/3/2025