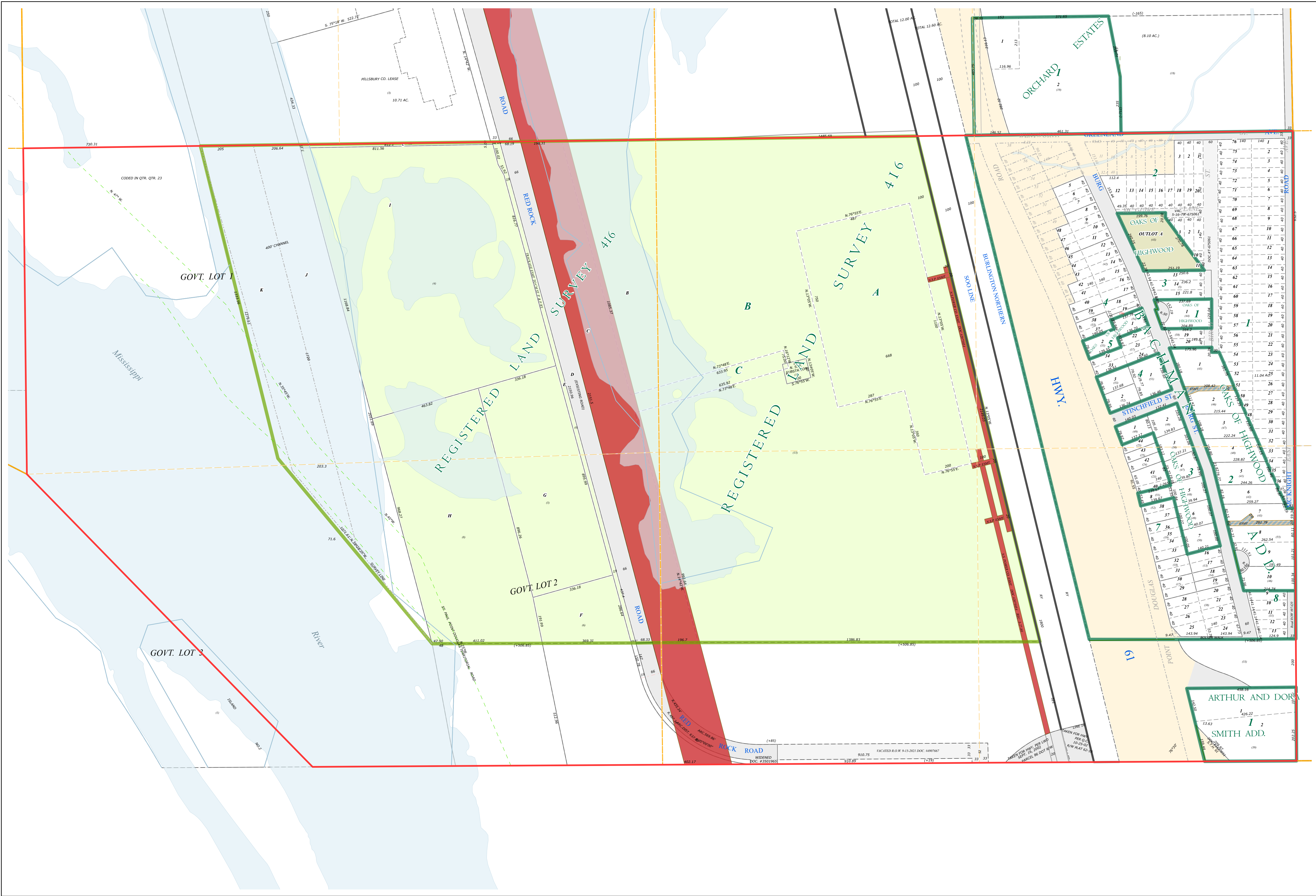
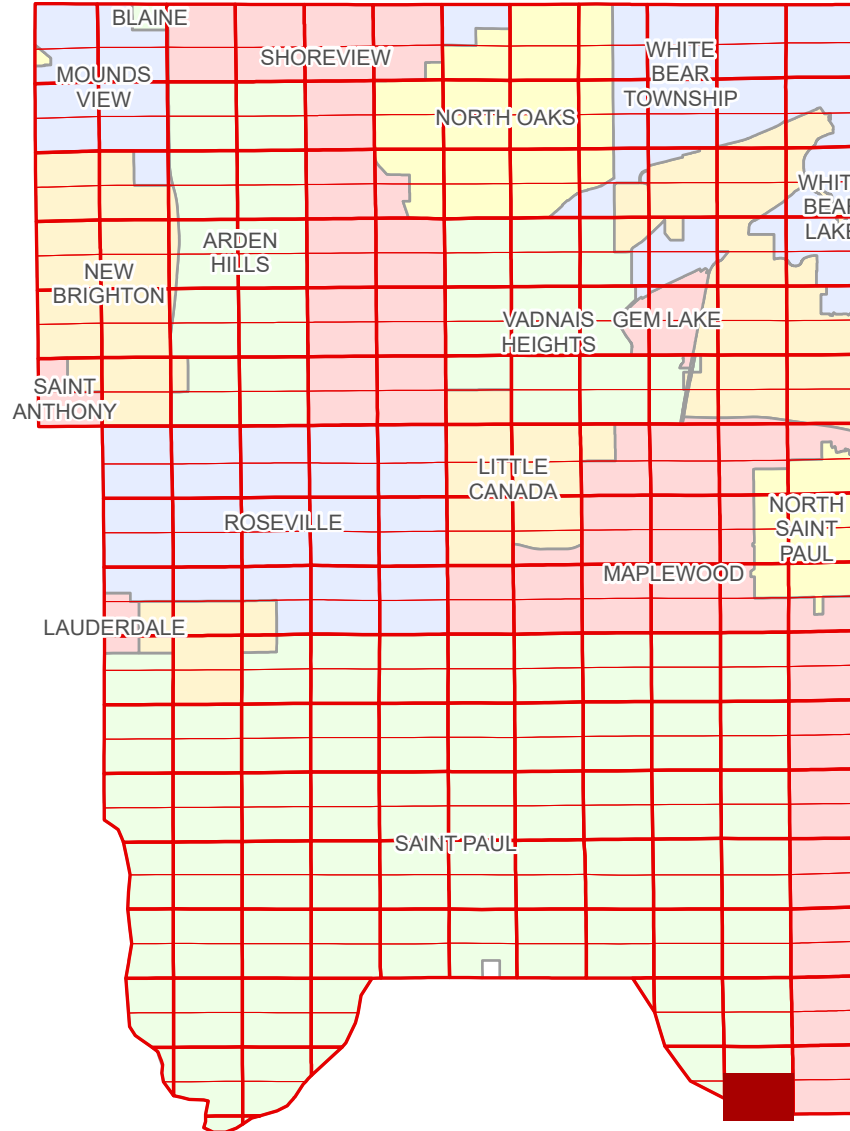


# Ramsey County Minnesota Parcel Map

Ramsey County  
Section 23

S Half  
Section 23  
T 28 N  
R 22 W



**Legend**

Section	<b>Division Type</b>	Lot
Quarter	Outlot	Tract
Quarter Quarter	Metes & Bounds	<b>Tax Parcel Type</b>
Federal Right of Way	State Assessed Property	Real Property
Municipal Right of Way	<b>Easement Type</b>	Utility, Electric
<b>Subdivision Type</b>	Registered Land Survey	Drainage & Utility
Subdivision Plat		

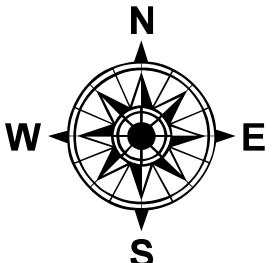
The information on this map is a compilation of Ramsey County Records. THE COUNTY DOES NOT WARRANT OR GUARANTEE THE ACCURACY OF THIS DATA. The County disclaims any liability for any injuries, time delays, or expenses you may suffer if you rely in any manner on the accuracy of this data.

Produced by Information Services Enterprise GIS Division  
RCGISMetaData@Co.Ramsey.MN.US

NOTE: This is not an official Ramsey County tax lot map. This is based on the data available in the Geographic Information System, which may vary from tax data officially recorded in the Tax System. For an official tax map, please contact the Office of Property Records and Revenue.

651-266-2000  
AskPropertyTaxandRecords@co.ramsey.mn.us

Section 26  
Washington County



0 4590 180 270 360 Feet  
1" = 200'  
1:2,400

S232822

1/3/2025