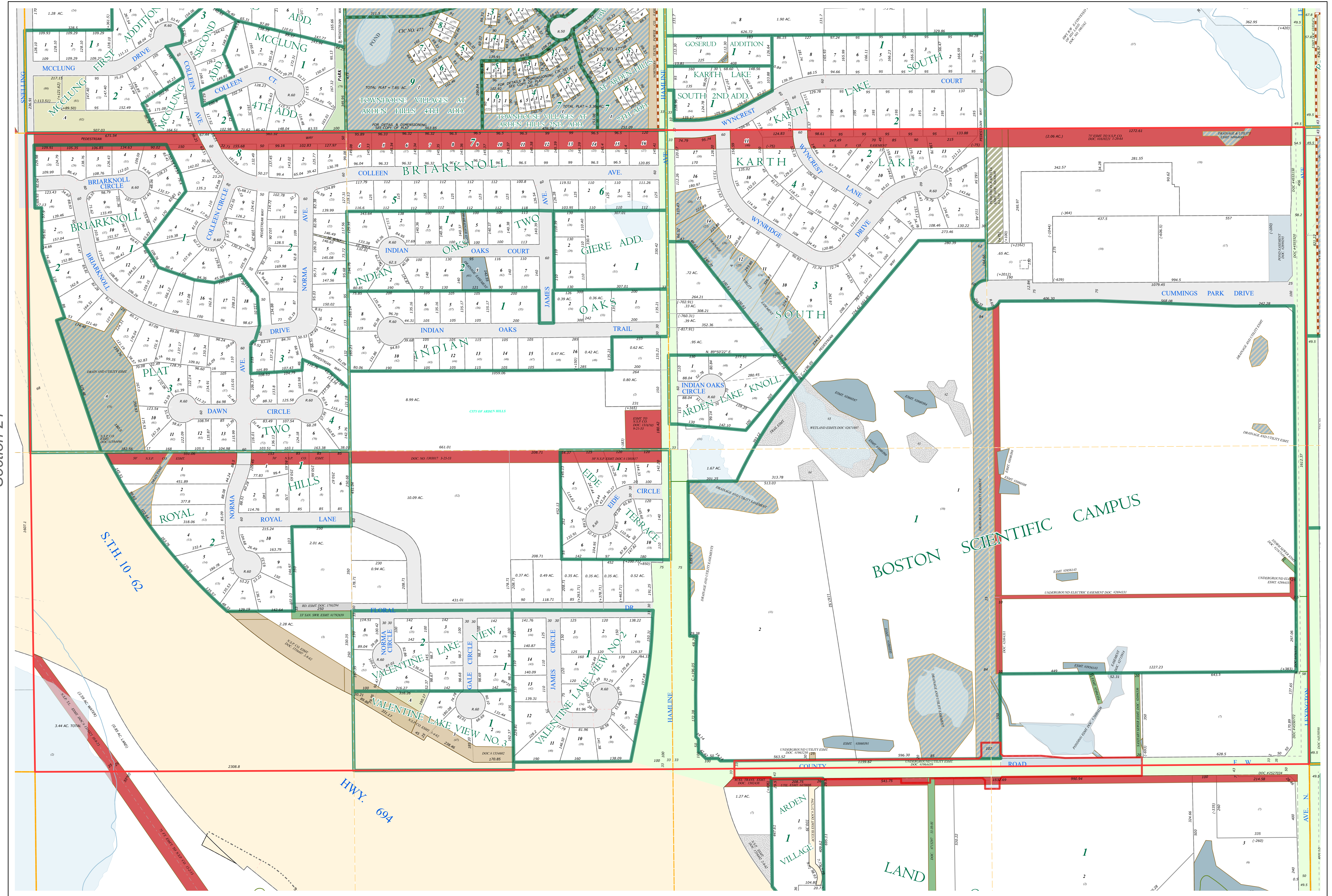
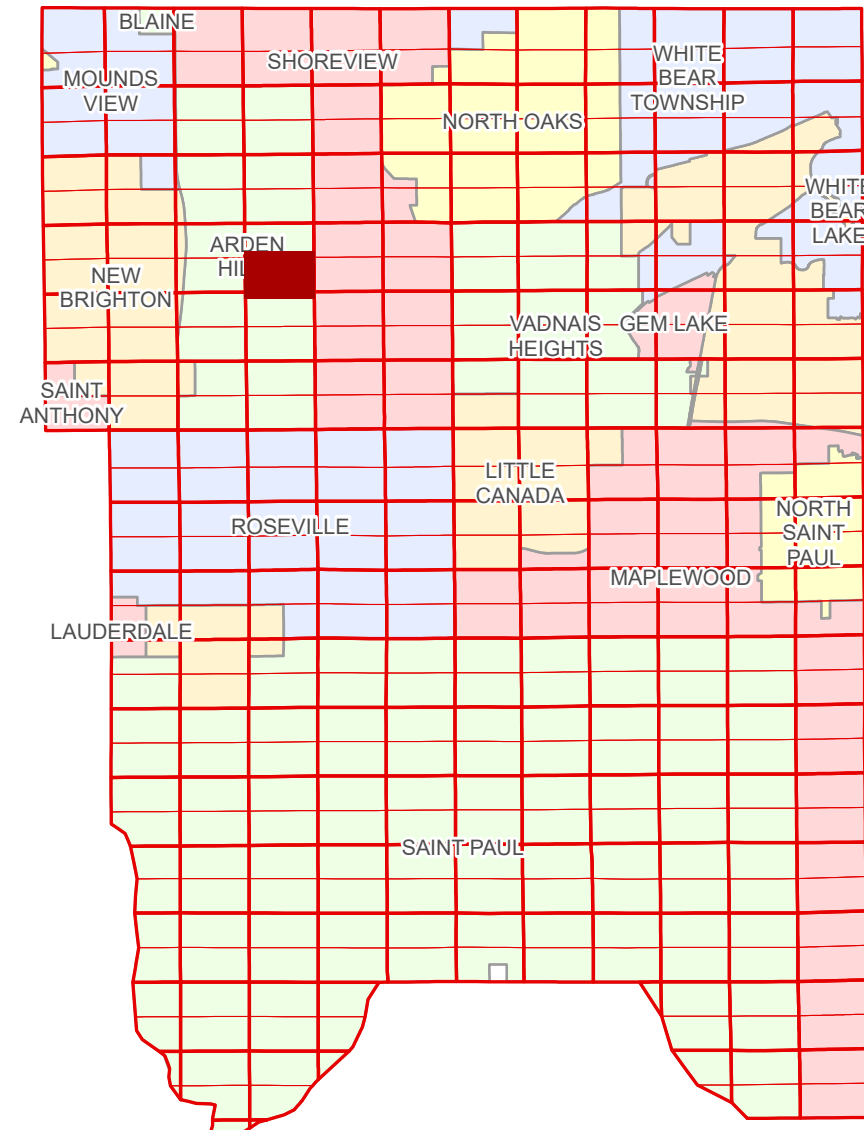


S Half
Section 22
T 30 N
R 23 W

Ramsey County Minnesota Parcel Map

Ramsey County
Section 22



Ramsey County
Section 21

Section 23
Ramsey County

Legend

| | |
|------------------------|---------------------------------|
| Section | Metes & Bounds |
| Quarter | Tax Parcel Type |
| Quarter Quarter | Personal Property |
| Federal Right of Way | Real Property |
| County Right of Way | Easement Type |
| Municipal Right of Way | Ponding |
| Subdivision Type | Pedestrian |
| Highway RoW Plat | Private Access |
| Planned Community | Private Driveway |
| Division Type | Utility, Electric |
| Lot | Utility, Storm & Sanitary Sewer |
| Other | Utility, Unidentified |
| Outlot | Drainage & Utility |
| Park | Drainage |
| | Misc Easements |

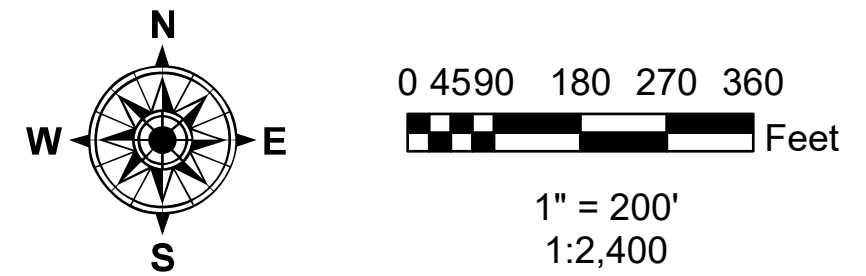
The information on this map is a compilation of Ramsey County Records. THE COUNTY DOES NOT WARRANT OR GUARANTEE THE ACCURACY OF THIS DATA. The County disclaims any liability for any injuries, time delays, or expenses you may suffer if you rely in any manner on the accuracy of this data.

Produced by Information Services Enterprise GIS Division
RCGISMetaData@Co.Ramsey.MN.US

NOTE: This is not an official Ramsey County tax lot map. This is based on the data available in the Geographic Information System, which may vary from tax data officially recorded in the Tax System. For an official tax map, please contact the Office of Property Records and Revenue.

651-266-2000
AskPropertyTaxandRecords@co.ramsey.mn.us

Section 27
Ramsey County



S223023
1/3/2025