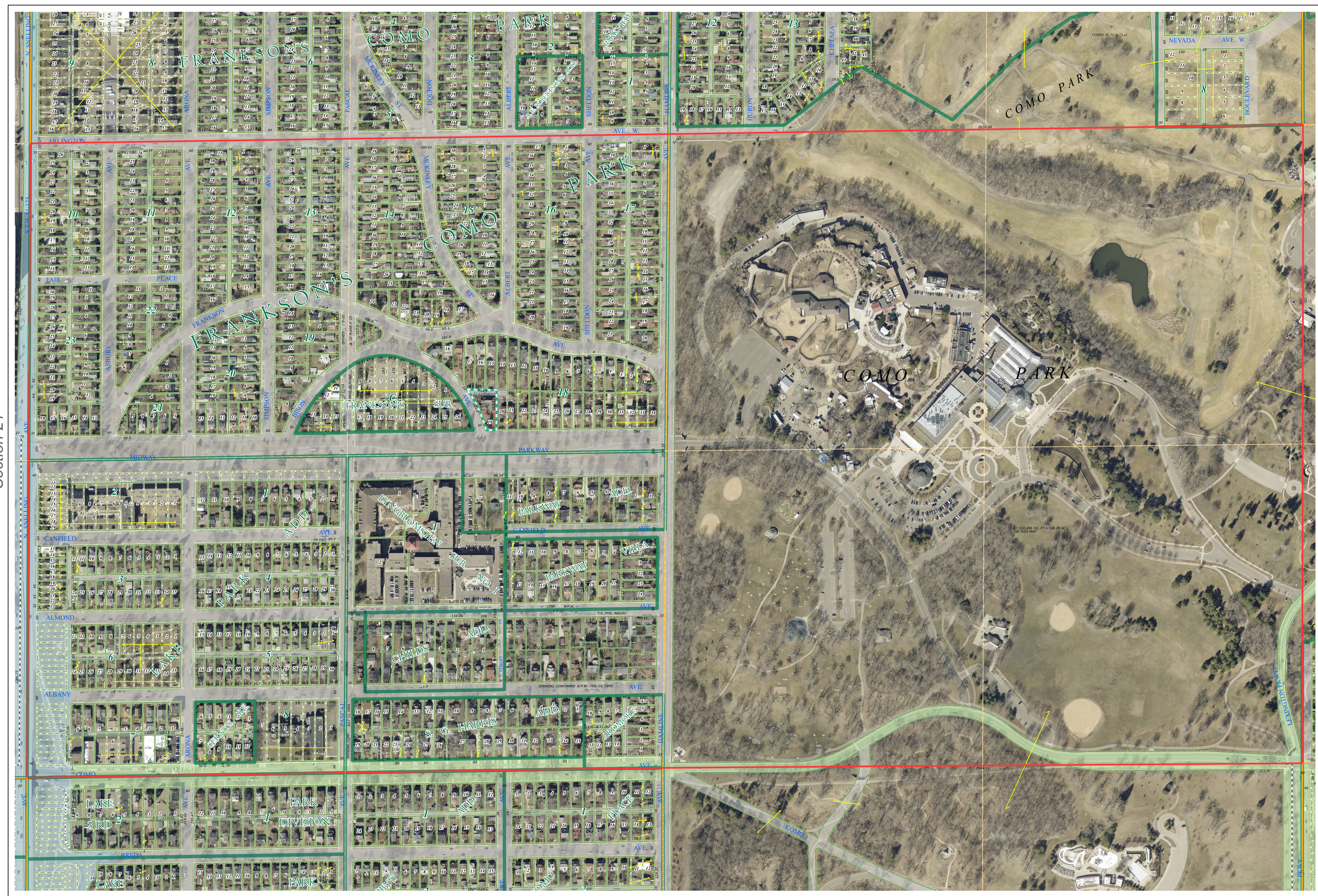
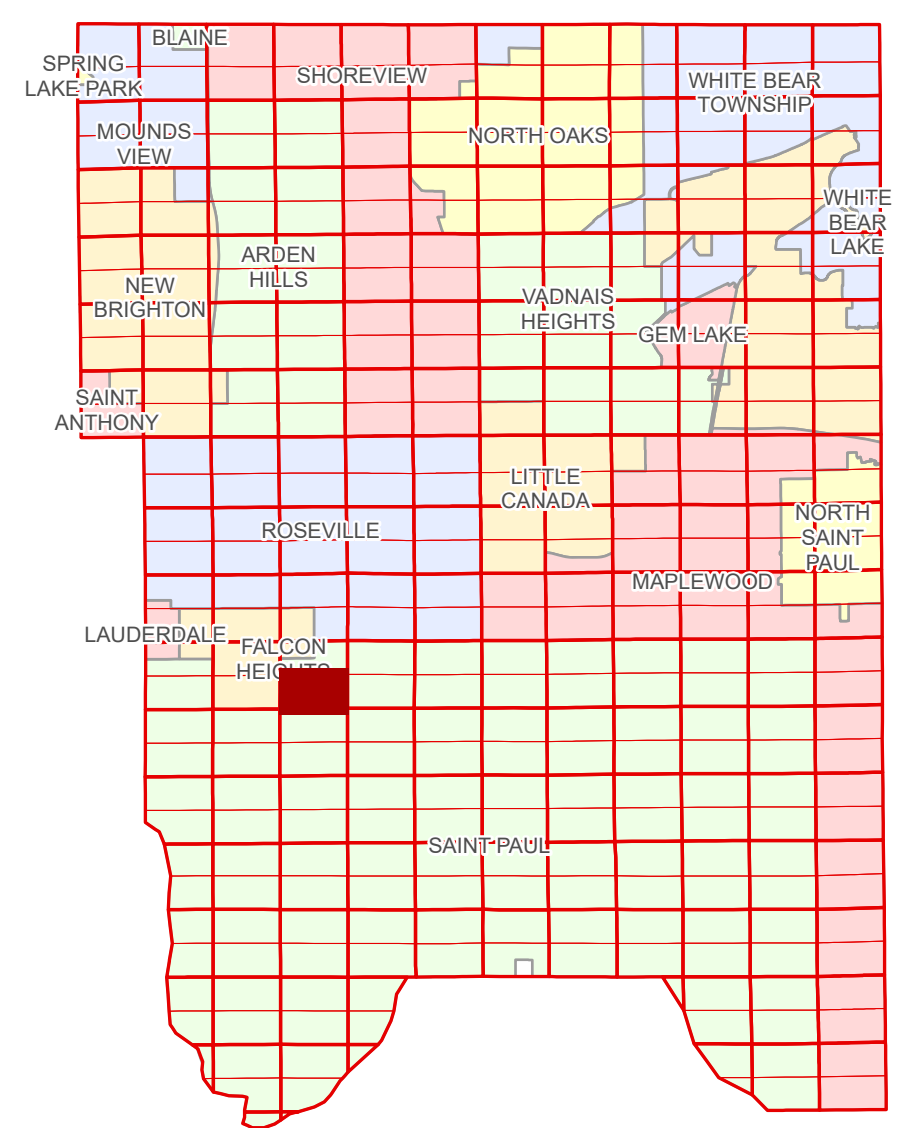


# Ramsey County Minnesota Parcel Map

S Half  
Section 22  
T 29 N  
R 23 W

Ramsey County  
Section 22



Ramsey County  
Section 21

Section 23  
Ramsey County

| Legend |                        |  |                   |
|--------|------------------------|--|-------------------|
|        | Section                |  | Division Type     |
|        | Quarter                |  | Lot               |
|        | Quarter Quarter        |  | Metes & Bounds    |
|        | State Right of Way     |  | Tax Parcel Type   |
|        | County Right of Way    |  | Personal Property |
|        | Municipal Right of Way |  | Real Property     |
|        | Subdivision Type       |  | Easement Type     |
|        | Subdivision Plat       |  | Private Driveway  |
|        | Condominium            |  |                   |

Aerial Imagery Date: March 11 - April 4, 2024



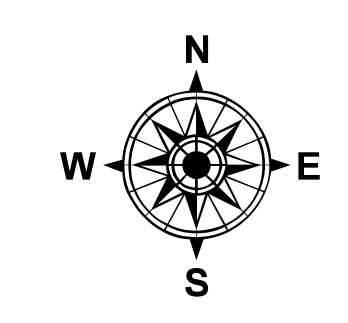
The information on this map is a compilation of Ramsey County Records. THE COUNTY DOES NOT WARRANT OR GUARANTEE THE ACCURACY OF THIS DATA. The County disclaims any liability for any injuries, time delays, or expenses you may suffer if you rely in any manner on the accuracy of this data.

Produced by Information Services Enterprise GIS Division  
RCGISMetaData@Co.Ramsey.MN.US

NOTE: This is not an official Ramsey County tax lot map. This is based on the data available in the Geographic Information System, which may vary from tax data officially recorded in the Tax System. For an official tax map, please contact the Office of Property Records and Revenue.

651-266-2000  
AskPropertyTaxandRecords@co.ramsey.mn.us

Section 27  
Ramsey County



S222923  
1/3/2025