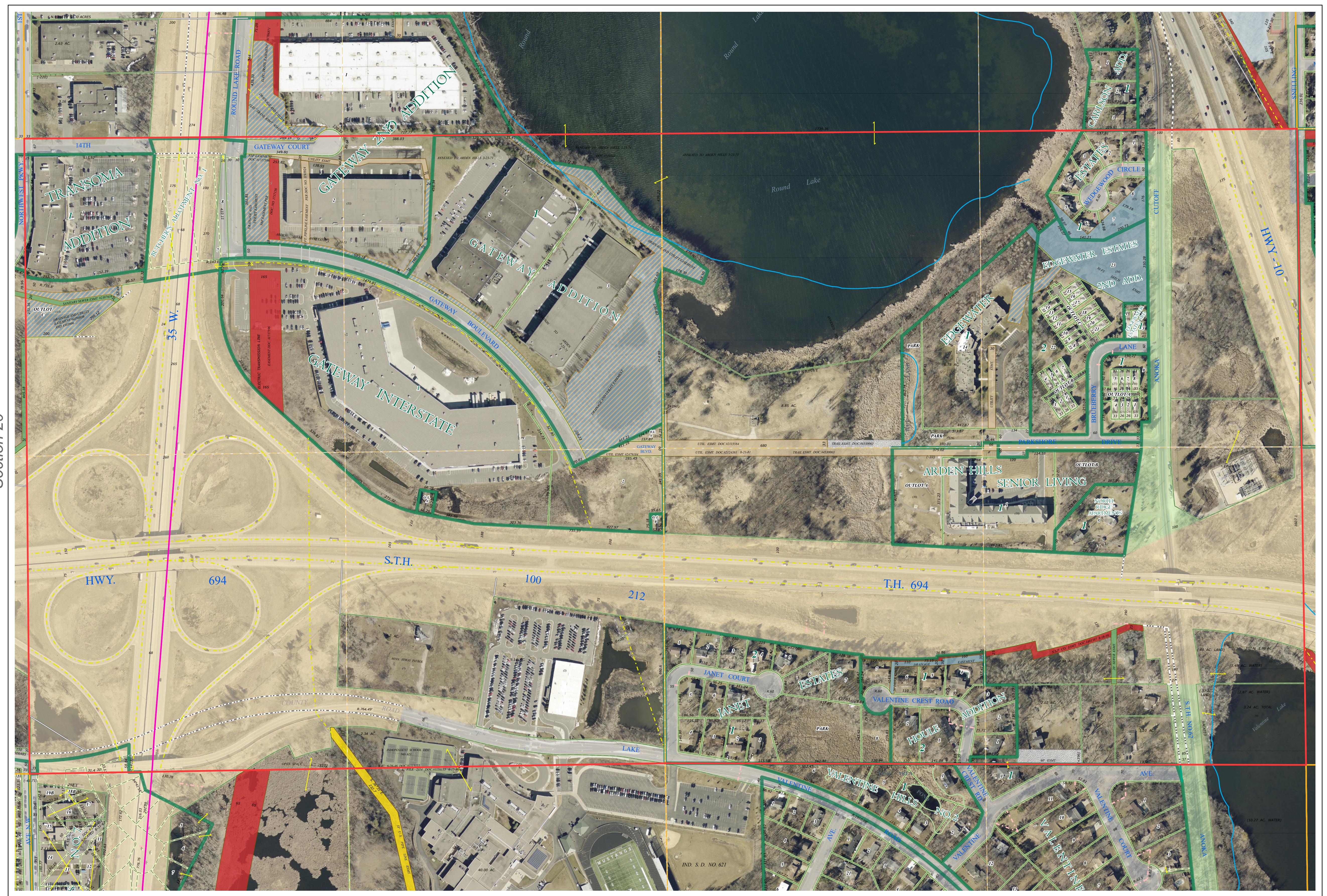
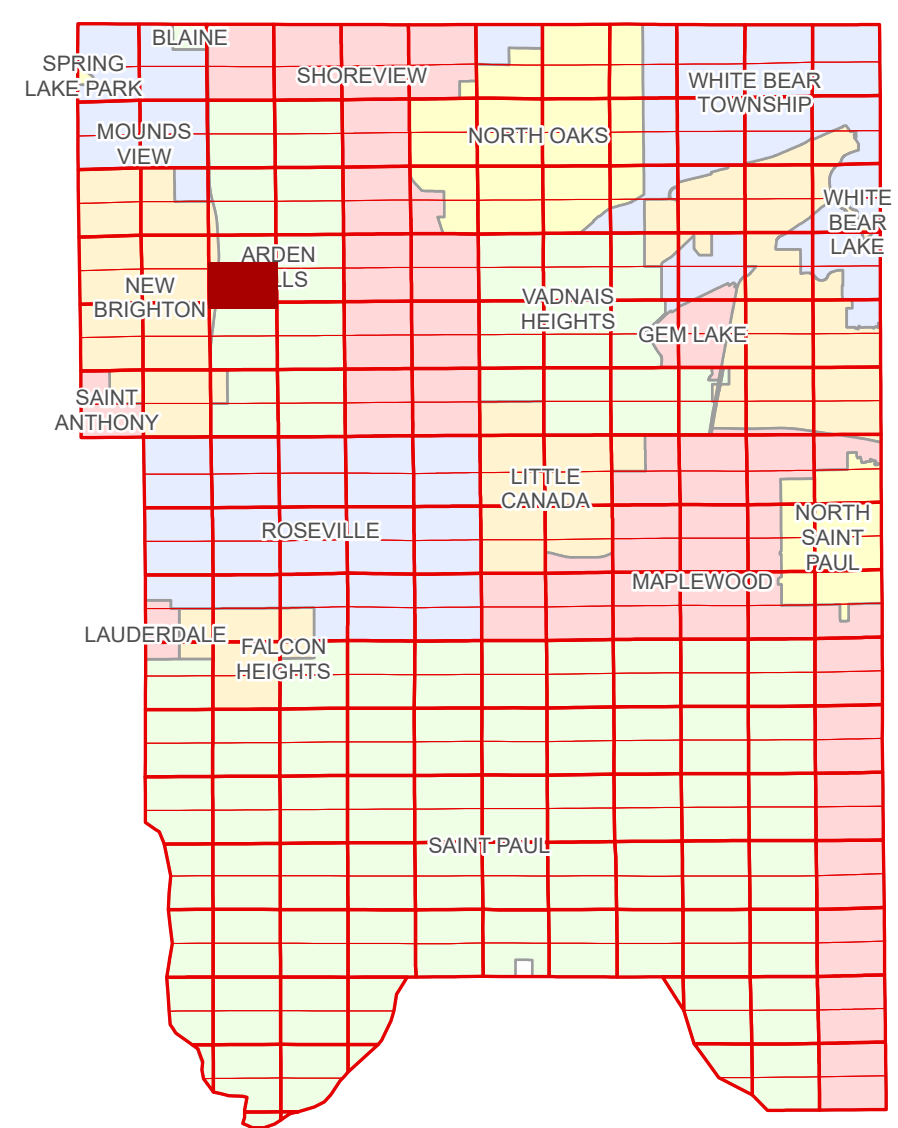


Ramsey County Minnesota Parcel Map

Ramsey County
Section 21

S Half
Section 21
T 30 N
R 23 W



Ramsey County
Section 20

Section 22
Ramsey County

Legend

Section	Real Property
Quarter	Easement Type
Quarter Quarter	Utility, Electric
Federal Right of Way	Utility, Gas & Oil
County Right of Way	Utility, Storm & Sanitary Sewer
Municipal Right of Way	Utility, Unidentified
Subdivision Type	Drainage & Utility
Subdivision Plat	Drainage
Division Type	Misc Easements
Lot	
Metes & Bounds	

The information on this map is a compilation of Ramsey County Records. THE COUNTY DOES NOT WARRANT OR GUARANTEE THE ACCURACY OF THIS DATA. The County disclaims any liability for any injuries, time delays, or expenses you may suffer if you rely in any manner on the accuracy of this data.

Produced by Information Services Enterprise GIS Division
RCGISMetaData@Co.Ramsey.MN.US

NOTE: This is not an official Ramsey County tax lot map. This is based on the data available in the Geographic Information System, which may vary from tax data officially recorded in the Tax System. For an official tax map, please contact the Office of Property Records and Revenue.

651-266-2000
AskPropertyTaxandRecords@co.ramsey.mn.us

Section 28
Ramsey County

Aerial Imagery Date: March 11 - April 4, 2024



S213023
1/3/2025