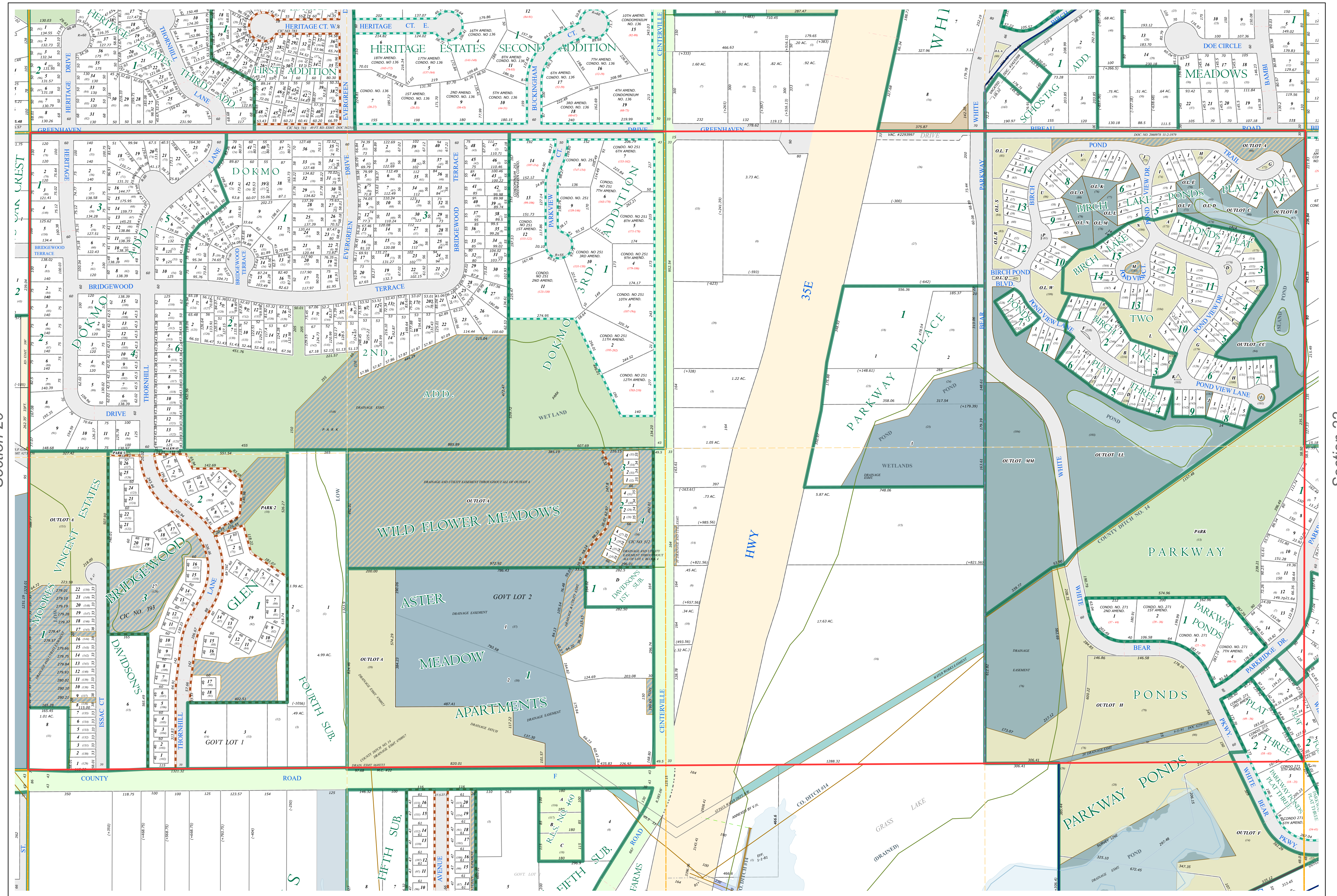
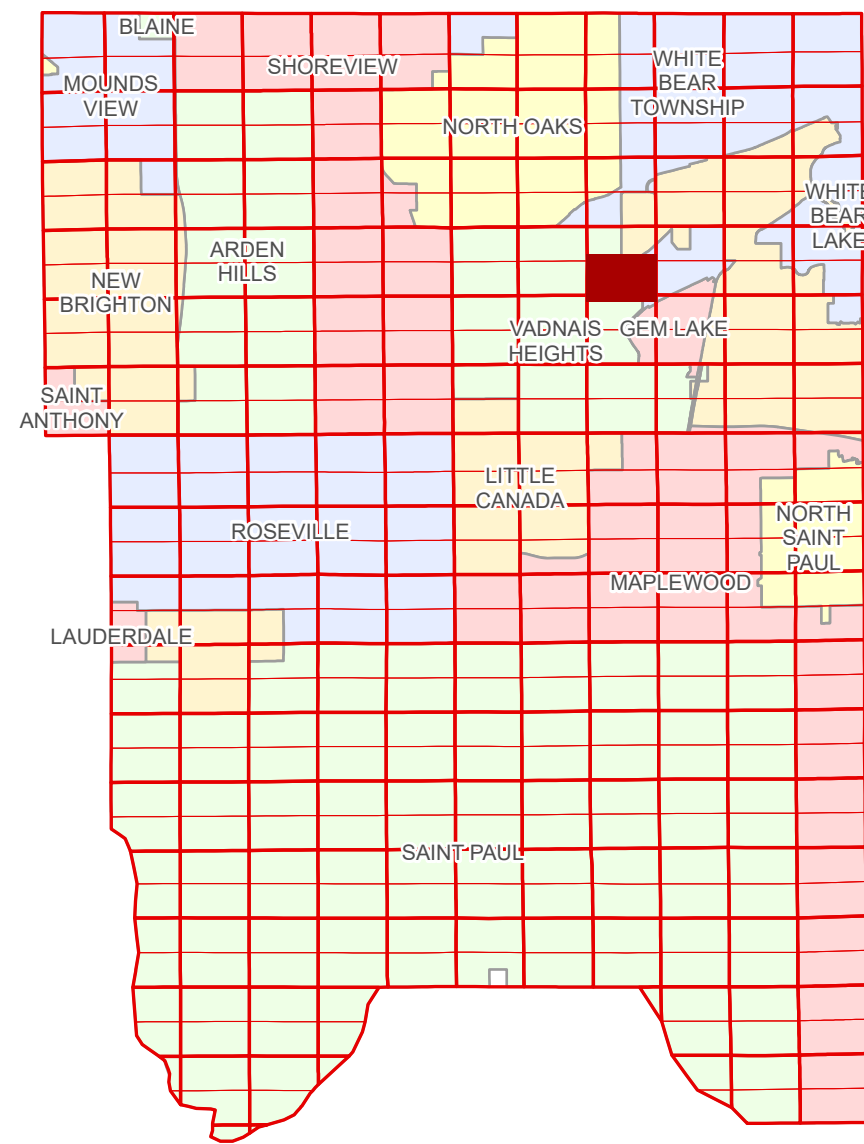


S Half
Section 21
T 30 N
R 22 W

Ramsey County Minnesota Parcel Map

Ramsey County
Section 21



Ramsey County
Section 20

Section 22
Ramsey County

| Legend | |
|--------|------------------------|
| | Section |
| | Quarter |
| | Quarter Quarter |
| | Federal Right of Way |
| | County Right of Way |
| | Municipal Right of Way |
| | Subdivision Type |
| | Planned Community |
| | Condominium |
| | Division Type |
| | Lot |
| | Outlot |
| | Park |
| | Metes & Bounds |
| | Tax Parcel Type |
| | Real Property |
| | Easement Type |
| | Utility, Water |
| | Utility, Unidentified |
| | Drainage & Utility |
| | Drainage |

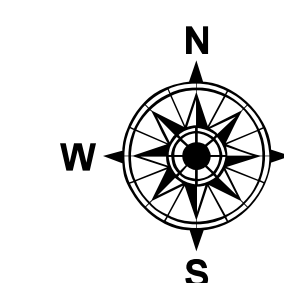
The information on this map is a compilation of Ramsey County Records. THE COUNTY DOES NOT WARRANT OR GUARANTEE THE ACCURACY OF THIS DATA. THE County disclaims any liability for any injuries, time delays, or expenses you may suffer if you rely in any manner on the accuracy of this data.

NOTE: This is not an official Ramsey County tax lot map. This is based on the data available in the Geographic Information System, which may vary from tax data officially recorded in the Tax System. For an official tax map, please contact the Office of Property Records and Revenue.

Produced by Information Services Enterprise GIS Division
RCGSMetaData@Co.Ramsey.MN.US

651-266-2000
AskPropertyTaxandRecords@co.ramsey.mn.us

Section 28
Ramsey County



0 4590 180 270 360
Feet

1" = 200'

1:2,400

S213022

1/3/2025