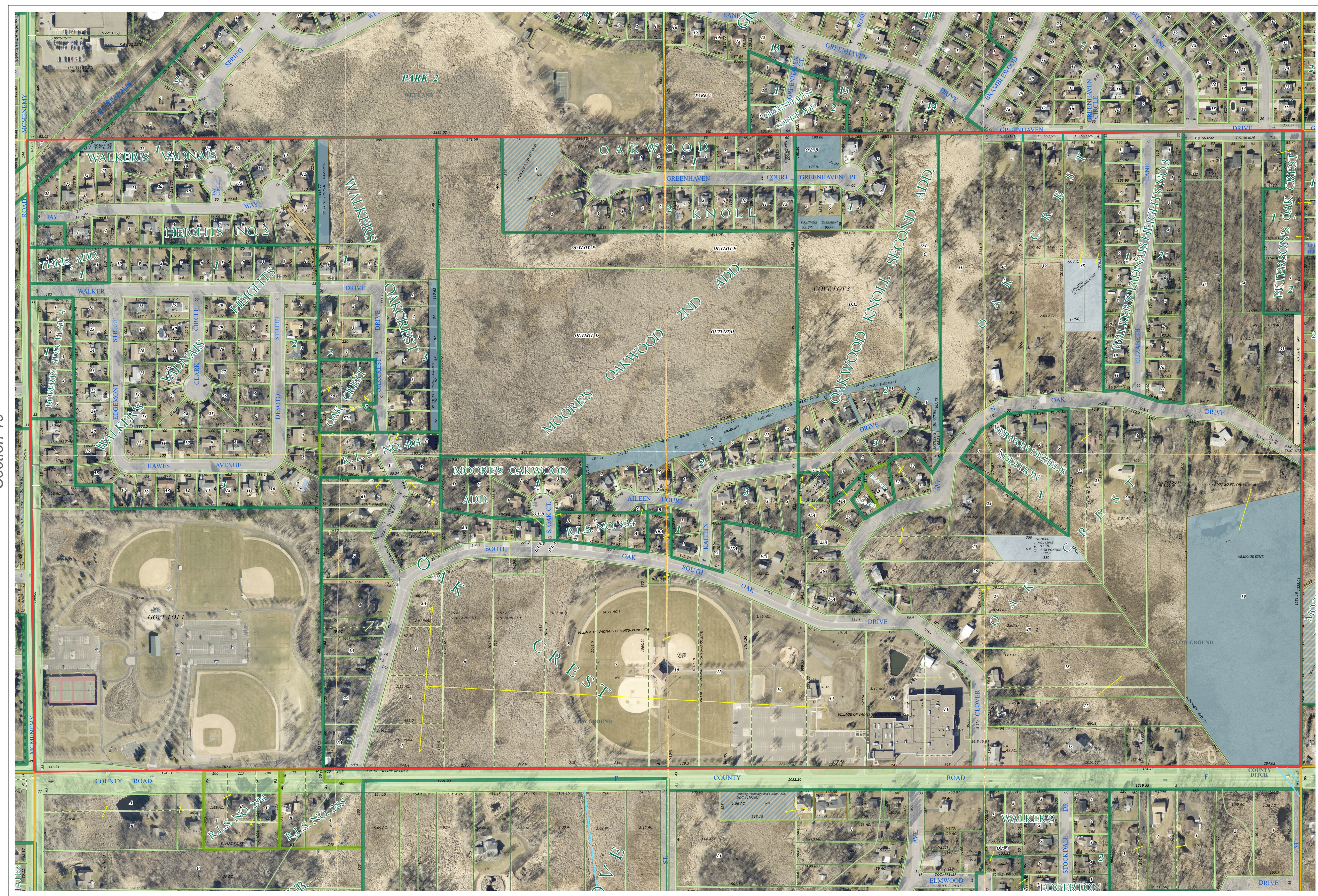
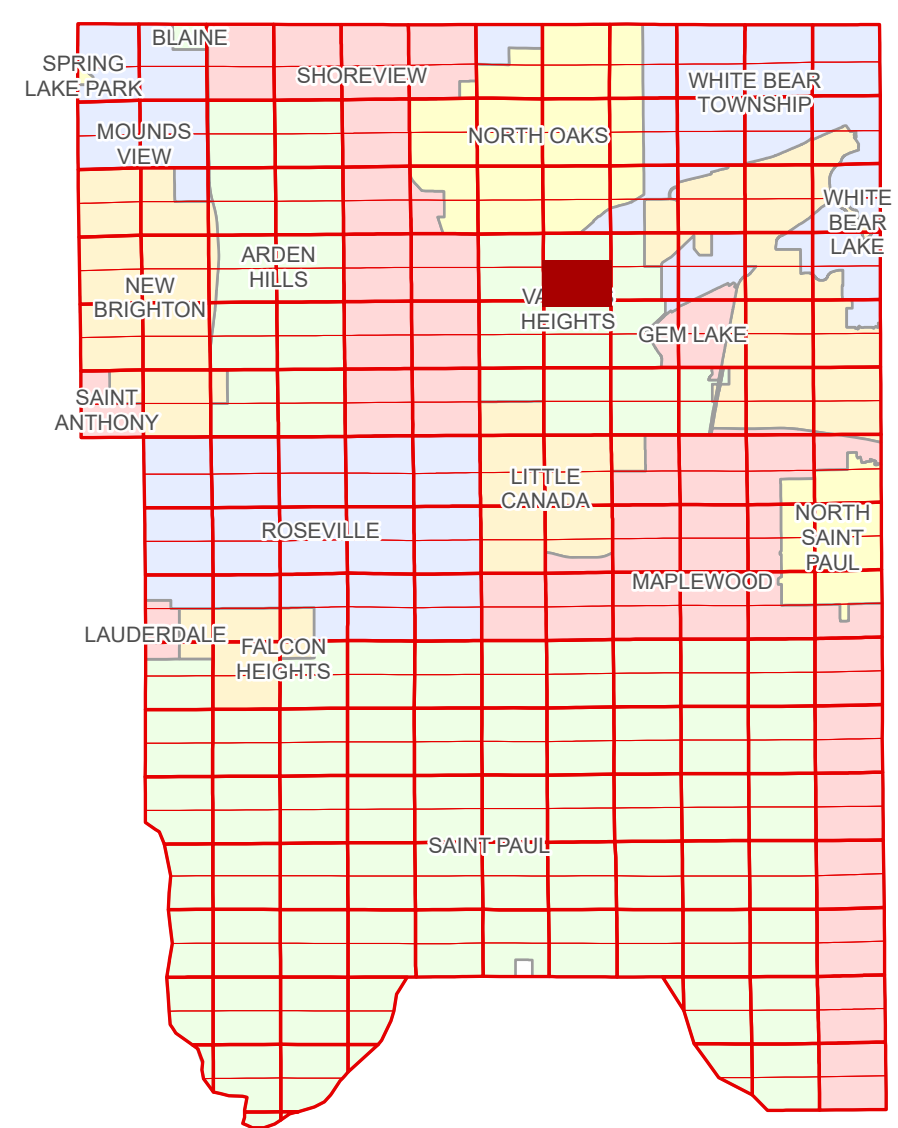


Ramsey County Minnesota Parcel Map

Ramsey County
Section 20

S Half
Section 20
T 30 N
R 22 W



Ramsey County
Section 19

Section 21
Ramsey County

| Legend | |
|-------------------------|--|
| | Section |
| | Quarter |
| | Quarter Quarter |
| | County Right of Way |
| | Municipal Right of Way |
| Subdivision Type | |
| | Subdivision Plat |
| | Registered Land Survey |
| Division Type | |
| | Lot |
| | Metes & Bounds |
| | Tax Parcel Type State Assessed Property |
| | Real Property |
| Easement Type | |
| | Ponding |
| | Pedestrian |
| | Private Access |
| | Utility, Gas & Oil |
| | Utility, Storm & Sanitary Sewer |
| | Utility, Unidentified |
| | Drainage & Utility |
| | Drainage |

The information on this map is a compilation of Ramsey County Records. THE COUNTY DOES NOT WARRANT OR GUARANTEE THE ACCURACY OF THIS DATA. The County disclaims any liability for any injuries, time delays, or expenses you may suffer if you rely in any manner on the accuracy of this data.

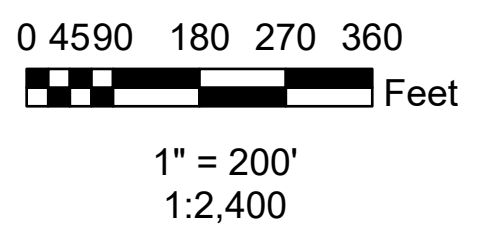
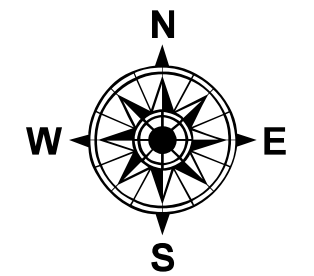
Produced by Information Services Enterprise GIS Division
RCGISMetaData@Co.Ramsey.MN.US

NOTE: This is not an official Ramsey County tax lot map. This is based on the data available in the Geographic Information System, which may vary from tax data officially recorded in the Tax System. For an official tax map, please contact the Office of Property Records and Revenue.

651-266-2000
AskPropertyTaxandRecords@co.ramsey.mn.us

Section 29
Ramsey County

Aerial Imagery Date: March 11 - April 4, 2024



S203022
1/3/2025