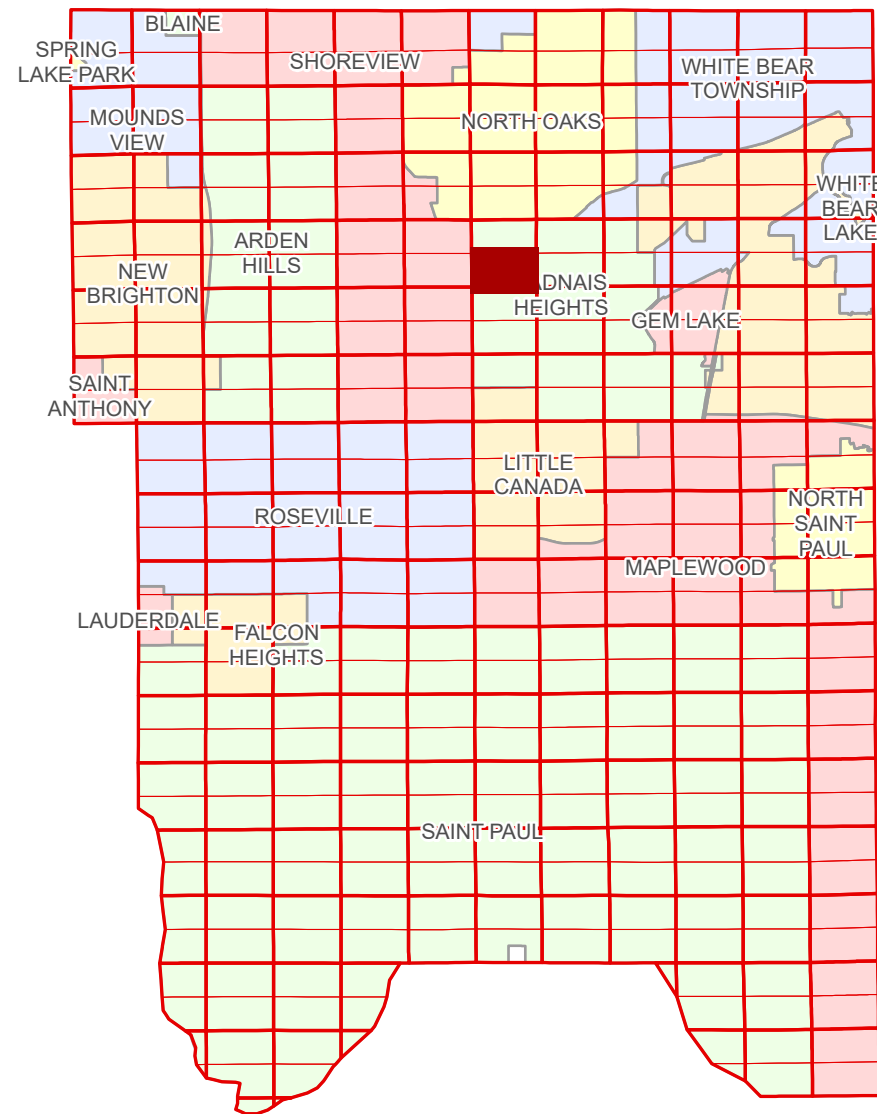


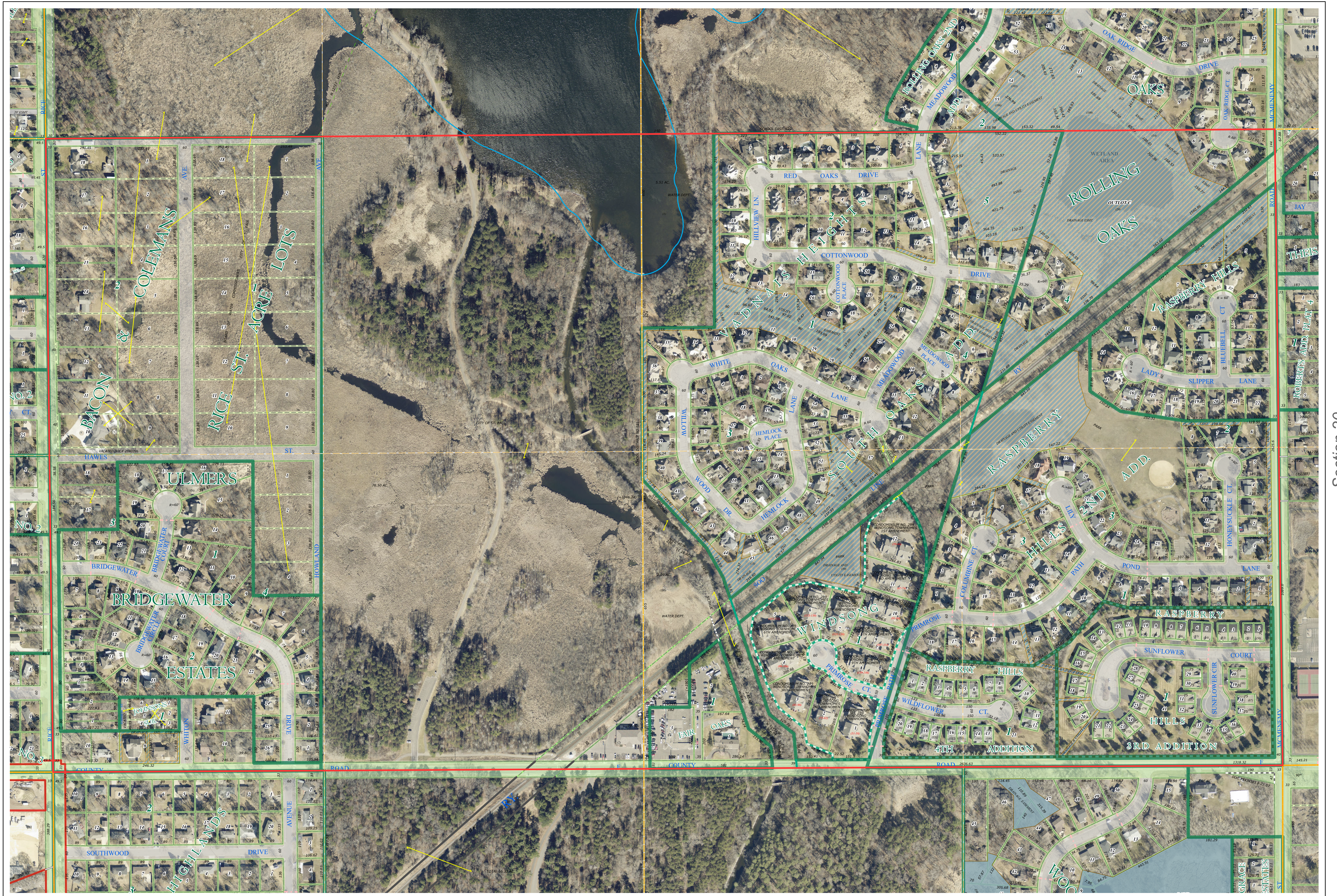
# Ramsey County Minnesota Parcel Map

Ramsey County  
Section 19

S Half  
Section 19  
T 30 N  
R 22 W



Ramsey County  
Section 24



Section 20  
Ramsey County

| Legend |                        |  |                         |
|--------|------------------------|--|-------------------------|
|        | Section                |  | Planned Community       |
|        | Quarter                |  | Condominium             |
|        | Quarter Quarter        |  | Lot                     |
|        | County Right of Way    |  | Metes & Bounds          |
|        | Municipal Right of Way |  | State Assessed Property |
|        | Subdivision Plat       |  | Real Property           |
|        | Registered Land Survey |  | Easement Type           |
|        | Highway RoW Plat       |  | Drainage & Utility      |

The information on this map is a compilation of Ramsey County Records. THE COUNTY DOES NOT WARRANT OR GUARANTEE THE ACCURACY OF THIS DATA. The County disclaims any liability for any injuries, time delays, or expenses you may suffer if you rely in any manner on the accuracy of this data.

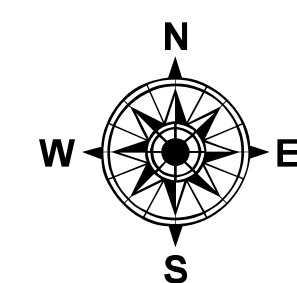
Produced by Information Services Enterprise GIS Division  
RCGISMetaData@Co.Ramsey.MN.US

NOTE: This is not an official Ramsey County tax lot map. This is based on the data available in the Geographic Information System, which may vary from tax data officially recorded in the Tax System. For an official tax map, please contact the Office of Property Records and Revenue.

651-266-2000  
AskPropertyTaxandRecords@co.ramsey.mn.us

Section 30  
Ramsey County

Aerial Imagery Date: March 11 - April 4, 2024



0 4590 180 270 360 Feet

1" = 200'  
1:2,400

S193022

1/3/2025