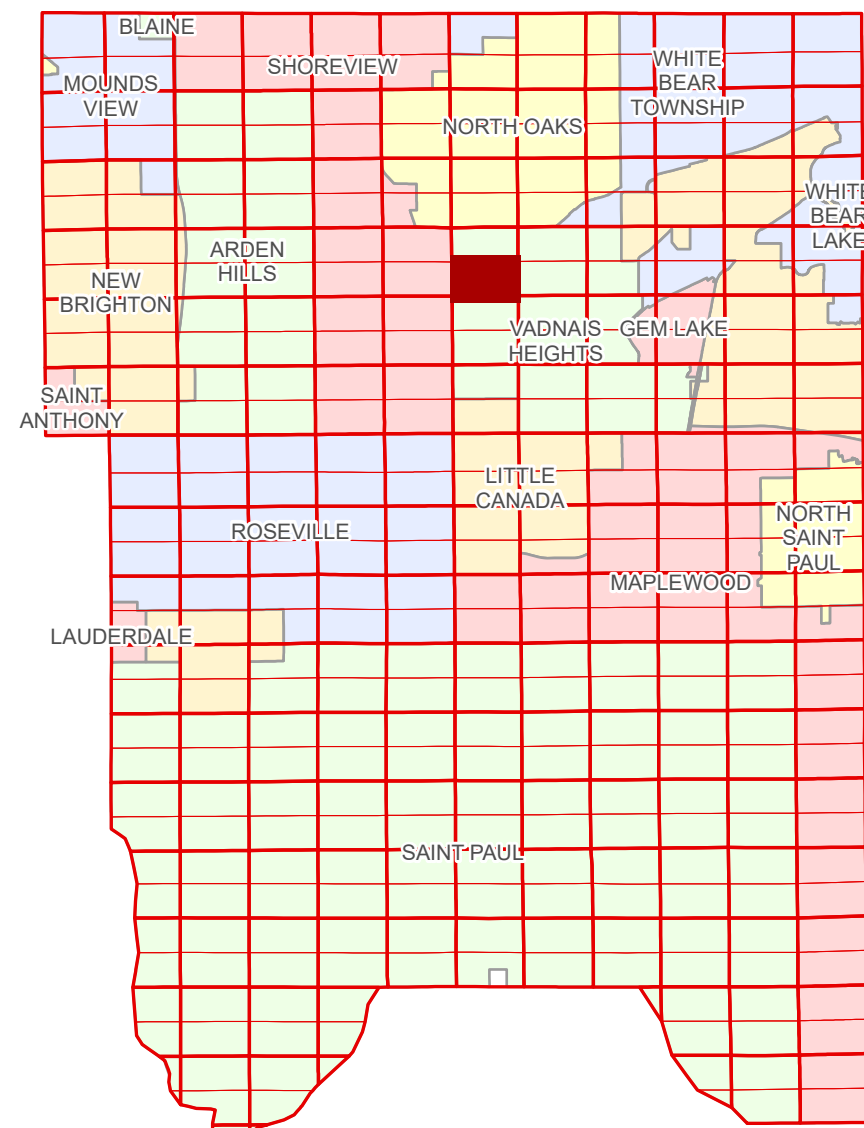


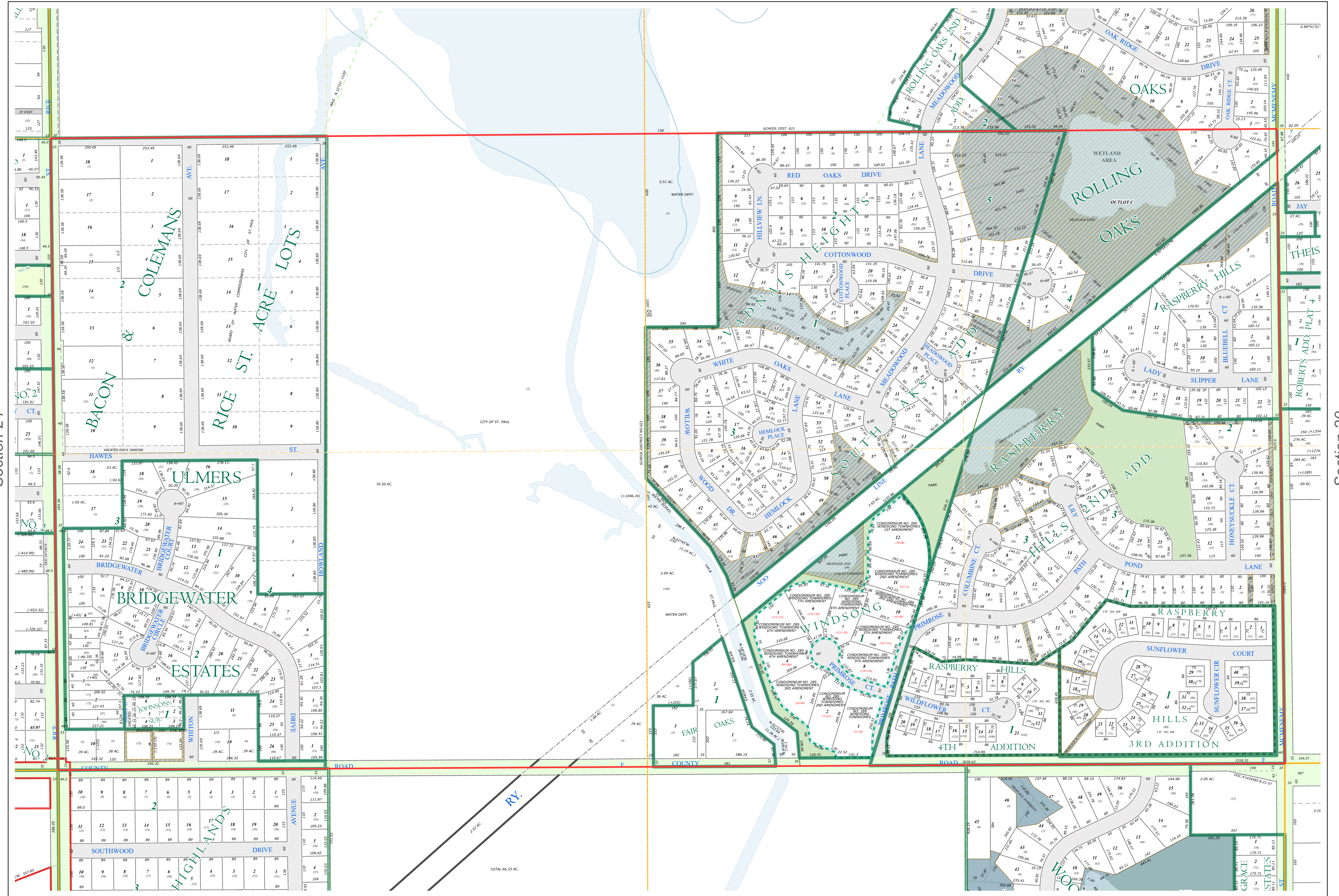
S Half  
Section 19  
T 30 N  
R 22 W

# Ramsey County Minnesota Parcel Map

Ramsey County  
Section 19



Ramsey County  
Section 24



Section 20  
Ramsey County

**Legend**

	Section		Division Type
	Quarter		Lot
	Quarter Quarter		Outlot
	County Right of Way		Park
	Municipal Right of Way		Metes & Bounds
	Subdivision Type		Tax Parcel Type
	Subdivision Plat		State Assessed Property
	Registered Land Survey		Real Property
	Highway RoW Plat		Easement Type
	Planned Community		Drainage & Utility
	Condominium		

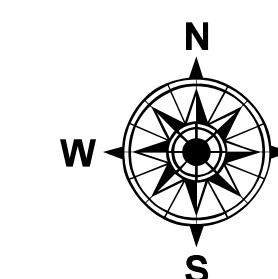
The information on this map is a compilation of Ramsey County Records. THE COUNTY DOES NOT WARRANT OR GUARANTEE THE ACCURACY OF THIS DATA. The County disclaims any liability for any injuries, time delays, or expenses you may suffer if you rely in any manner on the accuracy of this data.

Produced by Information Services Enterprise GIS Division  
RCGISMetaData@Co.Ramsey.MN.US

NOTE: This is not an official Ramsey County tax lot map. This is based on the data available in the Geographic Information System, which may vary from tax data officially recorded in the Tax System. For an official tax map, please contact the Office of Property Records and Revenue.

651-266-2000  
AskPropertyTaxandRecords@co.ramsey.mn.us

Section 30  
Ramsey County



0 4590 180 270 360 Feet

1" = 200'

1:2,400

S193022

1/3/2025