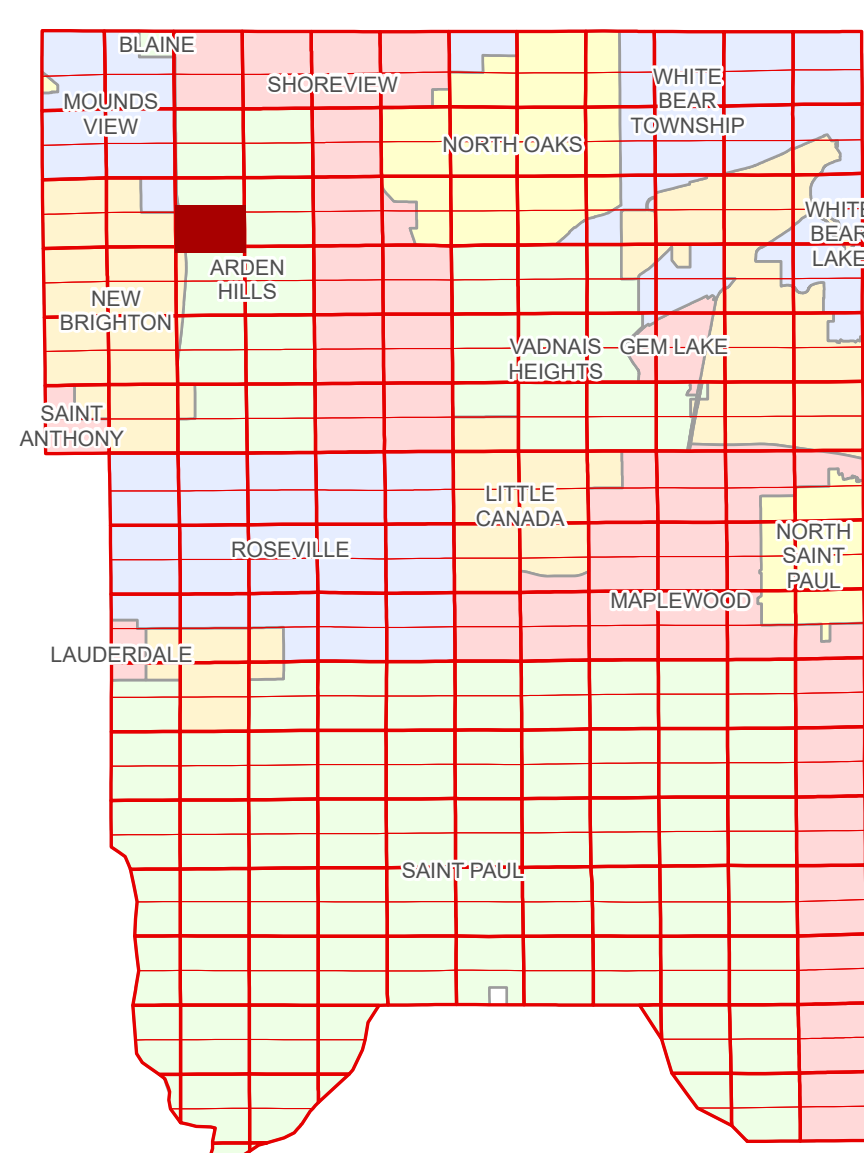


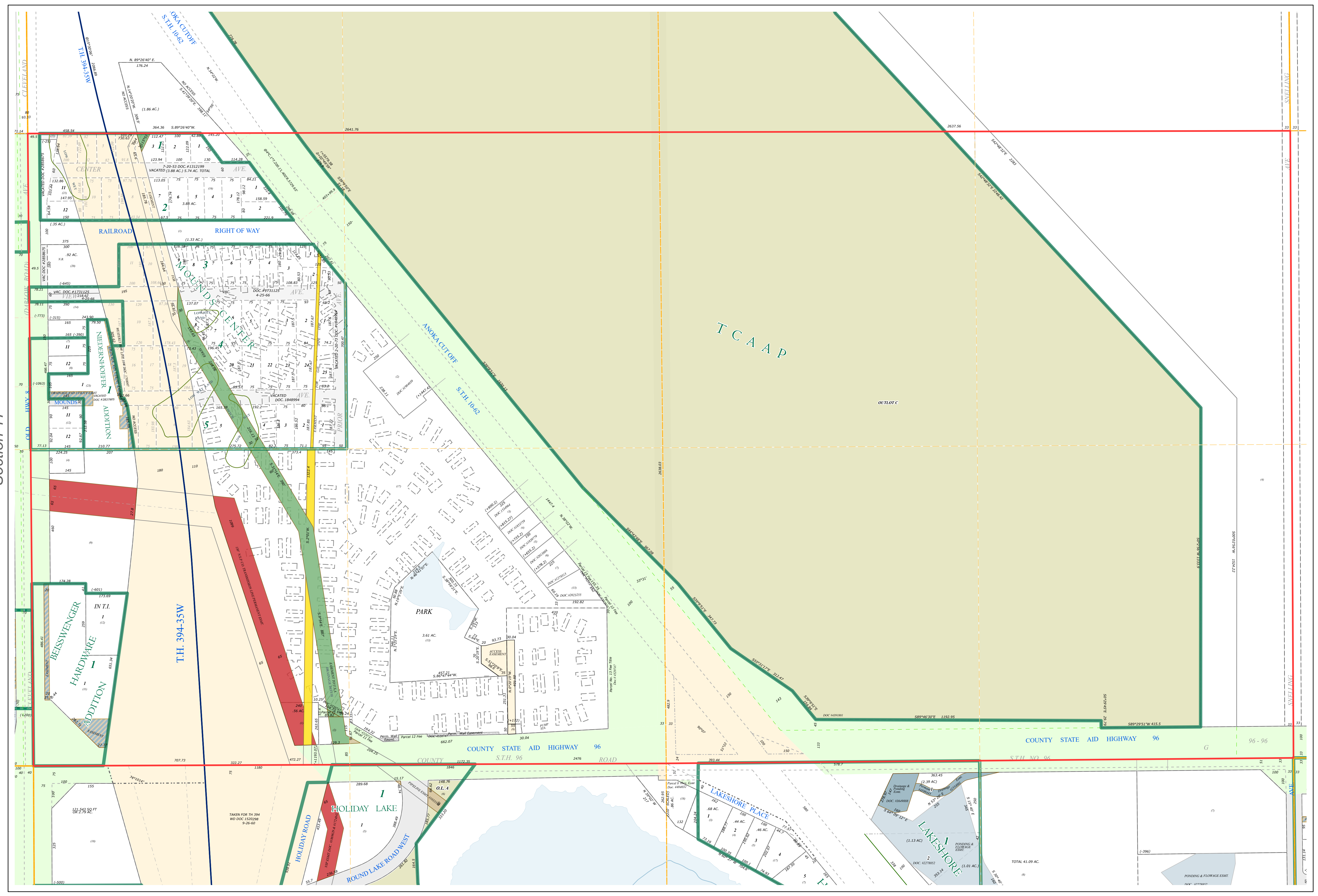
# Ramsey County Minnesota Parcel Map

Ramsey County  
Section 16

S Half  
Section 16  
T 30 N  
R 23 W



Legend			
	Section		Manufactured Home
	Quarter		Real Property
	Quarter Quarter	<b>Easement Type</b>	
	Federal Right of Way		Private Access
	County Right of Way		Utility, Electric
	Municipal Right of Way		Utility, Gas & Oil
<b>Subdivision Type</b>			Utility, Storm & Sanitary Sewer
	Subdivision Plat		Utility, Unidentified
<b>Division Type</b>			Drainage & Utility
	Lot		Misc Easements
	Outlot		
	Metes & Bounds		



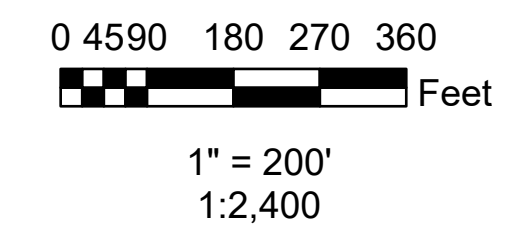
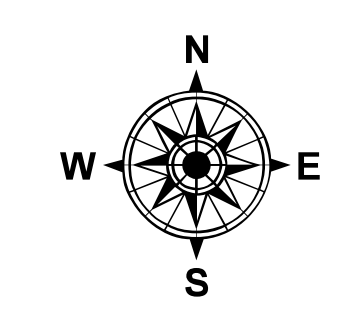
The information on this map is a compilation of Ramsey County Records. THE COUNTY DOES NOT WARRANT OR GUARANTEE THE ACCURACY OF THIS DATA. The County disclaims any liability for any injuries, time delays, or expenses you may suffer if you rely in any manner on the accuracy of this data.

Produced by Information Services Enterprise GIS Division  
RCGISMetaData@Co.Ramsey.MN.US

NOTE: This is not an official Ramsey County tax lot map. This is based on the data available in the Geographic Information System, which may vary from tax data officially recorded in the Tax System. For an official tax map, please contact the Office of Property Records and Revenue.

651-266-2000  
AskPropertyTaxandRecords@co.ramsey.mn.us

Section 21  
Ramsey County



S163023  
1/3/2025