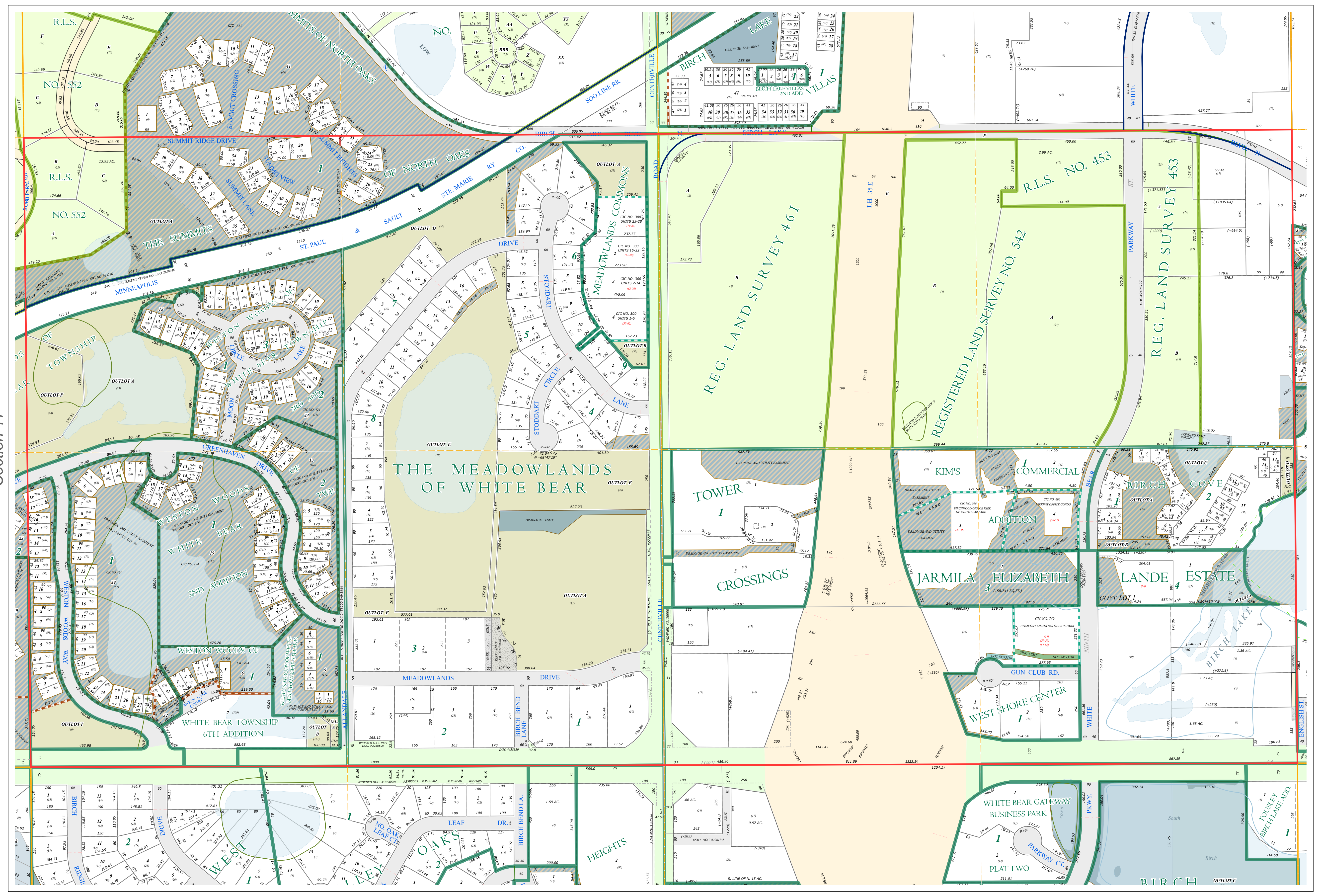
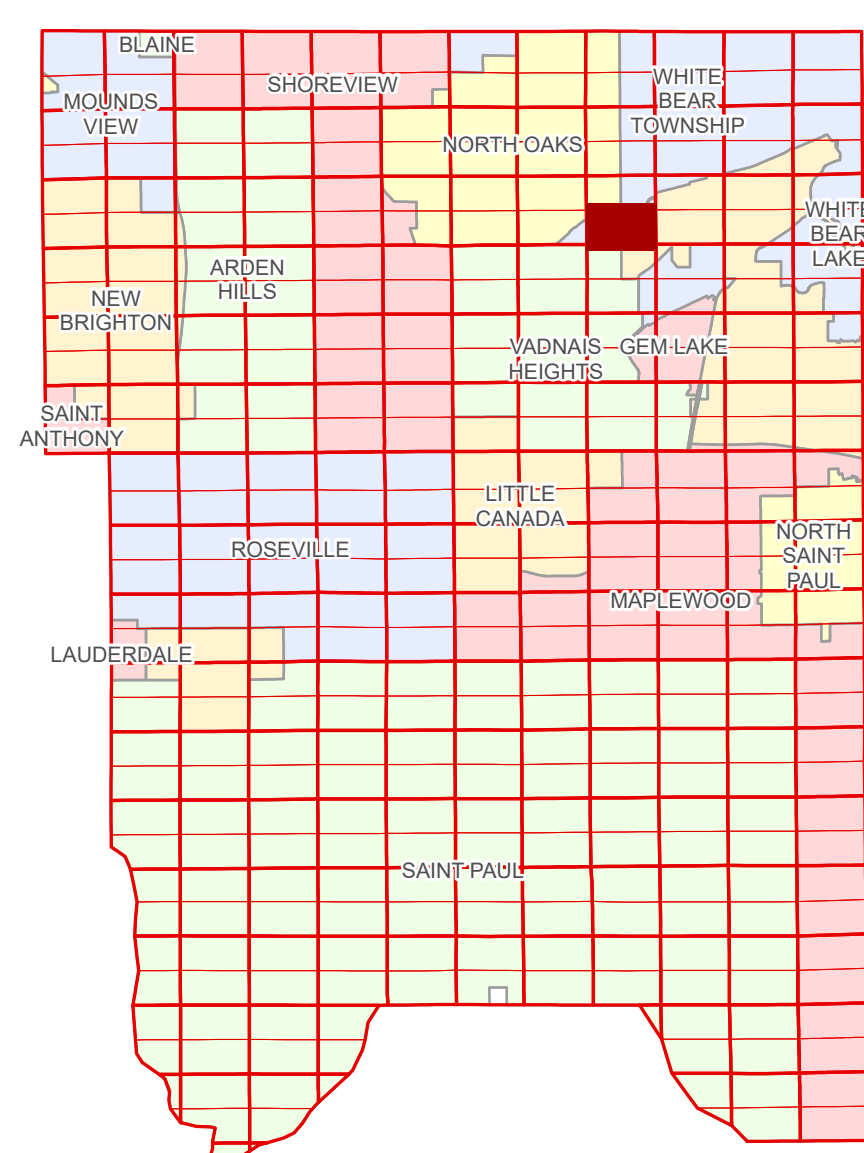


# Ramsey County Minnesota Parcel Map

S Half  
Section 16  
T 30 N  
R 22 W

Ramsey County  
Section 16



Ramsey County  
Section 17

Section 15  
Ramsey County

Section 21  
Ramsey County

Legend	
	Section
	Quarter
	Quarter Quarter
	Federal Right of Way
	County Right of Way
	Municipal Right of Way
	Subdivision Plat
	Registered Land Survey
	Planned Community
	Condominium
	Division Type Lot
	Division Type Outlot
	Division Type Tract
	Division Type Metes & Bounds
	Tax Parcel Type Personal Property
	Tax Parcel Type State Assessed Property
	Tax Parcel Type Real Property
	Easement Type Ponding
	Easement Type Private Access
	Easement Type Private Driveway
	Easement Type Utility, Electric
	Easement Type Utility, Gas & Oil
	Easement Type Utility, Storm & Sanitary Sewer
	Easement Type Utility, Water
	Easement Type Utility, Unidentified
	Easement Type Drainage & Utility
	Easement Type Drainage
	Easement Type Misc Easements

The information on this map is a compilation of Ramsey County Records. THE COUNTY DOES NOT WARRANT OR GUARANTEE THE ACCURACY OF THIS DATA. The County disclaims any liability for any injuries, time delays, or expenses you may suffer if you rely in any manner on the accuracy of this data.

Produced by Information Services Enterprise GIS Division  
RCGISMetaData@Co.Ramsey.MN.US

NOTE: This is not an official Ramsey County tax lot map. This is based on the data available in the Geographic Information System, which may vary from tax data officially recorded in the Tax System. For an official tax map, please contact the Office of Property Records and Revenue.

651-266-2000  
AskPropertyTaxandRecords@co.ramsey.mn.us