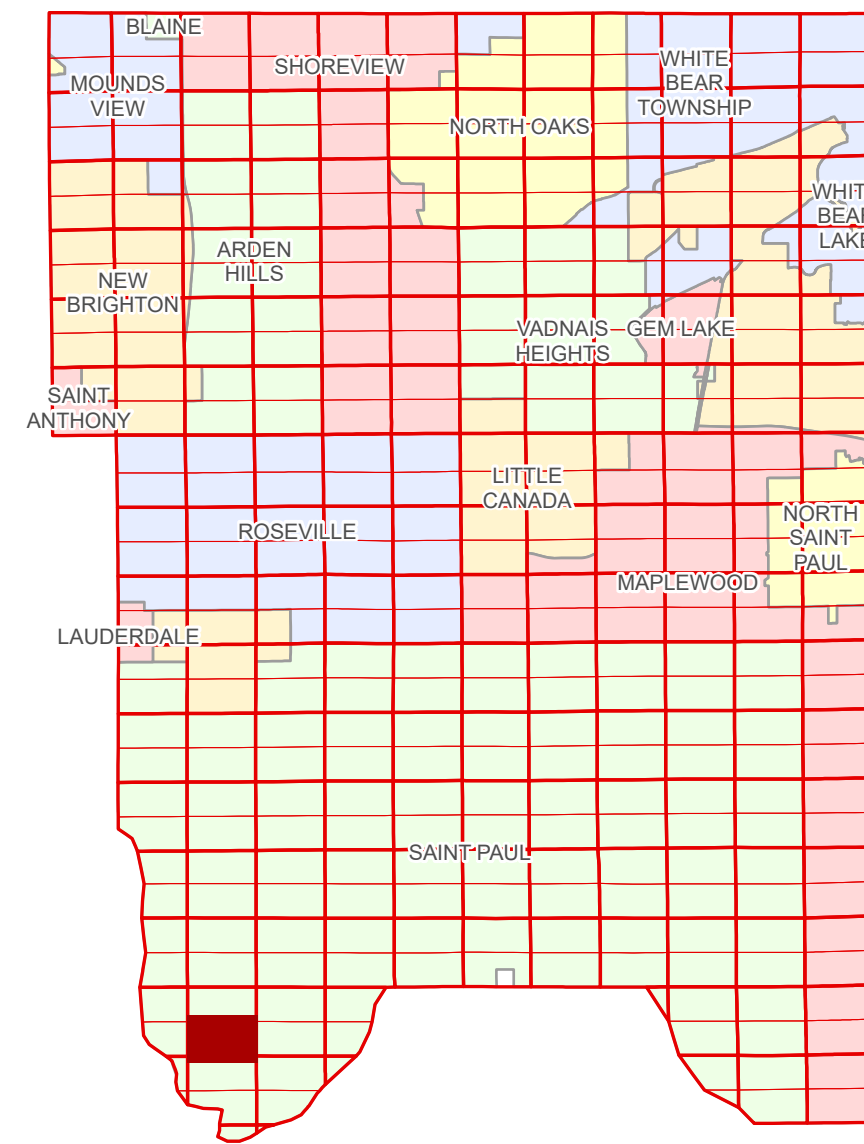


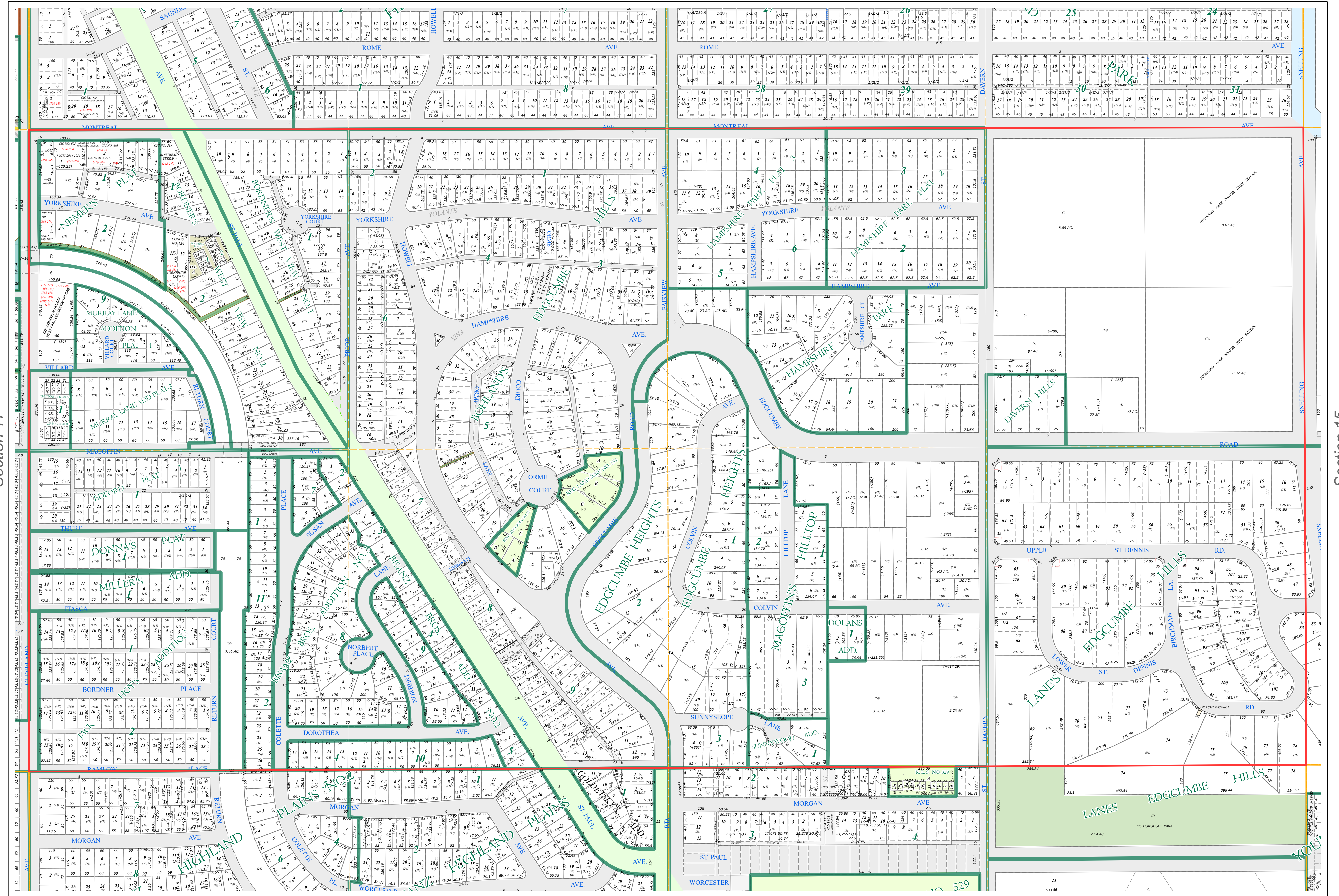
S Half
Section 16
T 28 N
R 23 W

Ramsey County Minnesota Parcel Map

Ramsey County
Section 16



Ramsey County
Section 17



Ramsey County
Section 15

Legend

Section	Division Type
Quarter	Lot
Quarter Quarter	Outlot
State Right of Way	Park
County Right of Way	Metes & Bounds
Municipal Right of Way	Tax Parcel Type
Subdivision Type	State Assessed Property
Subdivision Plat	Real Property
Registered Land Survey	Easement Type
	Private Access
	Utility, Storm & Sanitary Sewer

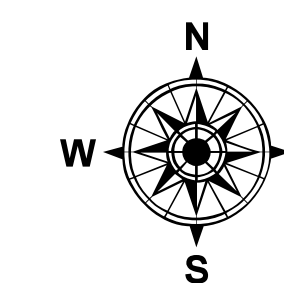
The information on this map is a compilation of Ramsey County Records. THE COUNTY DOES NOT WARRANT OR GUARANTEE THE ACCURACY OF THIS DATA. The County disclaims any liability for any injuries, time delays, or expenses you may suffer if you rely in any manner on the accuracy of this data.

NOTE: This is not an official Ramsey County tax lot map. This is based on the data available in the Geographic Information System, which may vary from tax data officially recorded in the Tax System. For an official tax map, please contact the Office of Property Records and Revenue.

Produced by Information Services Enterprise GIS Division
RCGSMetaData@Co.Ramsey.MN.US

651-266-2000
AskPropertyTaxandRecords@co.ramsey.mn.us

Section 21
Ramsey County



0 4590 180 270 360
Feet

1" = 200'
1:2,400

S162823

1/3/2025