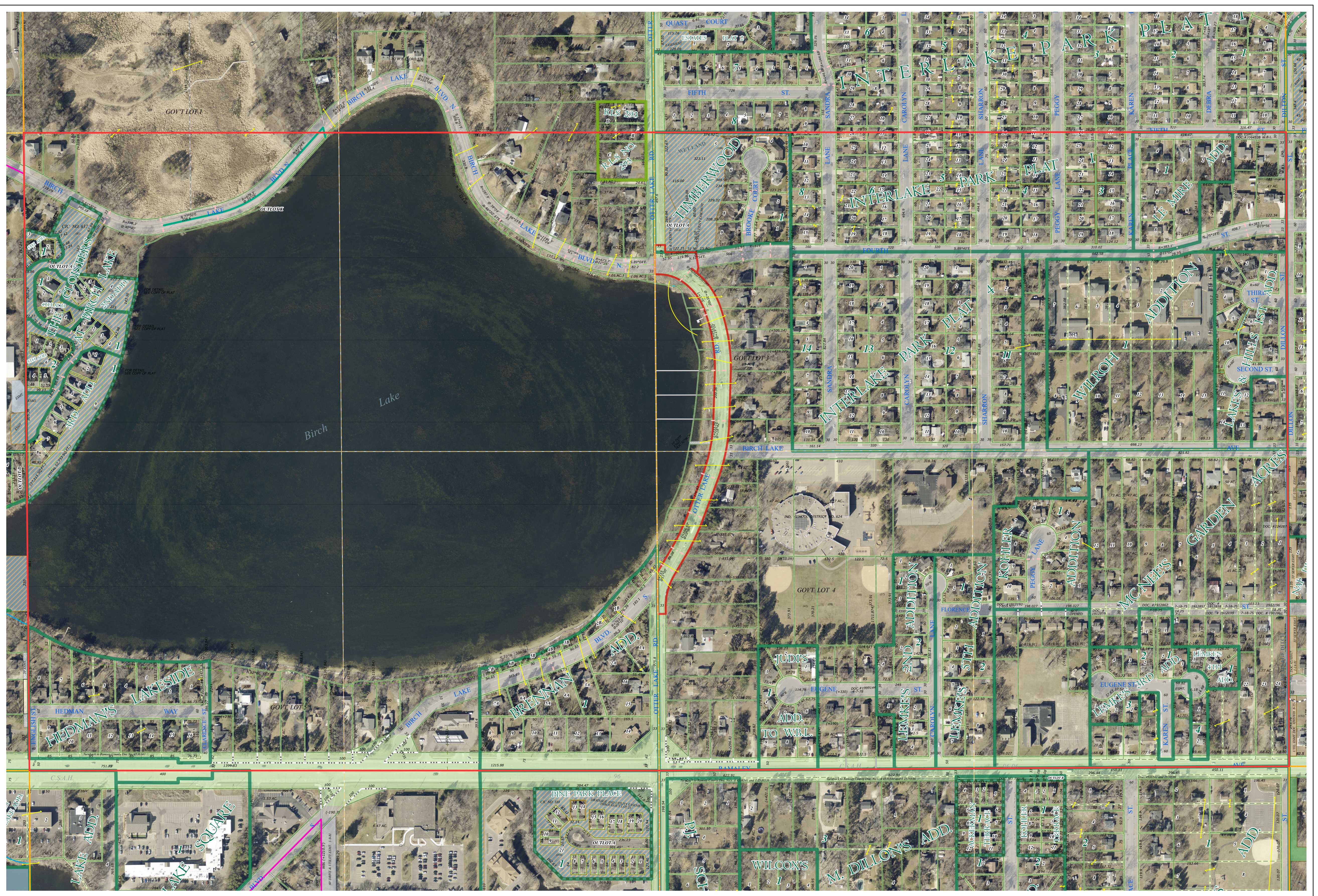
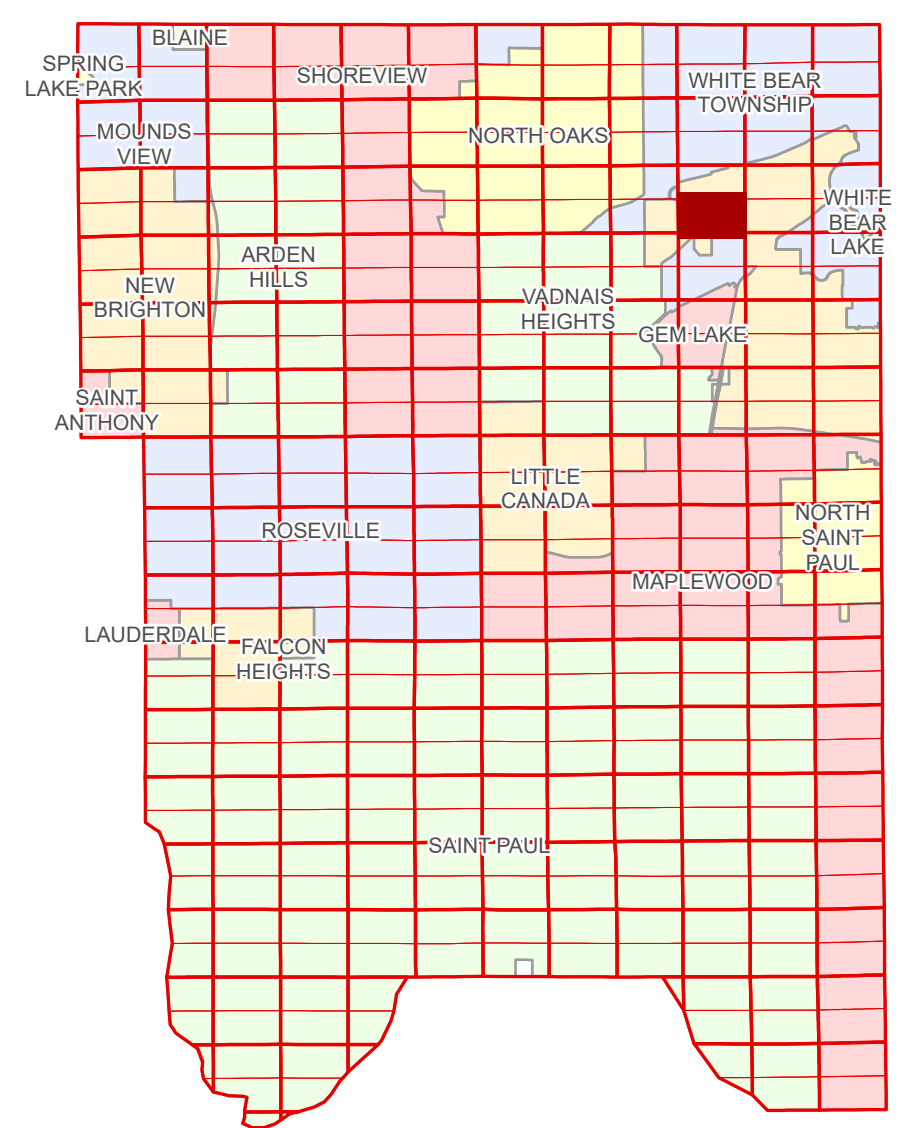


# Ramsey County Minnesota Parcel Map

Ramsey County  
Section 15

S Half  
Section 15  
T 30 N  
R 22 W



Ramsey County  
Section 16

Section 14  
Ramsey County

**Legend**

Section	Metes & Bounds
Quarter	<b>Tax Parcel Type</b>
Quarter Quarter	Real Property
County Right of Way	<b>Easement Type</b>
Municipal Right of Way	Ditch, County & Judicial
<b>Subdivision Type</b>	Ponding
Subdivision Plat	Private Access
Registered Land Survey	Utility, Storm & Sanitary Sewer
Highway RoW Plat	Utility, Water
Planned Community	Utility, Unidentified
<b>Division Type</b>	Drainage & Utility
Lot	Misc Easements

The information on this map is a compilation of Ramsey County Records. THE COUNTY DOES NOT WARRANT OR GUARANTEE THE ACCURACY OF THIS DATA. The County disclaims any liability for any injuries, time delays, or expenses you may suffer if you rely in any manner on the accuracy of this data.

Produced by Information Services Enterprise GIS Division  
RCGISMetaData@Co.Ramsey.MN.US

NOTE: This is not an official Ramsey County tax lot map. This is based on the data available in the Geographic Information System, which may vary from tax data officially recorded in the Tax System. For an official tax map, please contact the Office of Property Records and Revenue.

651-266-2000  
AskPropertyTaxandRecords@co.ramsey.mn.us

Section 22  
Ramsey County

Aerial Imagery Date: March 11 - April 4, 2024



S153022  
1/3/2025