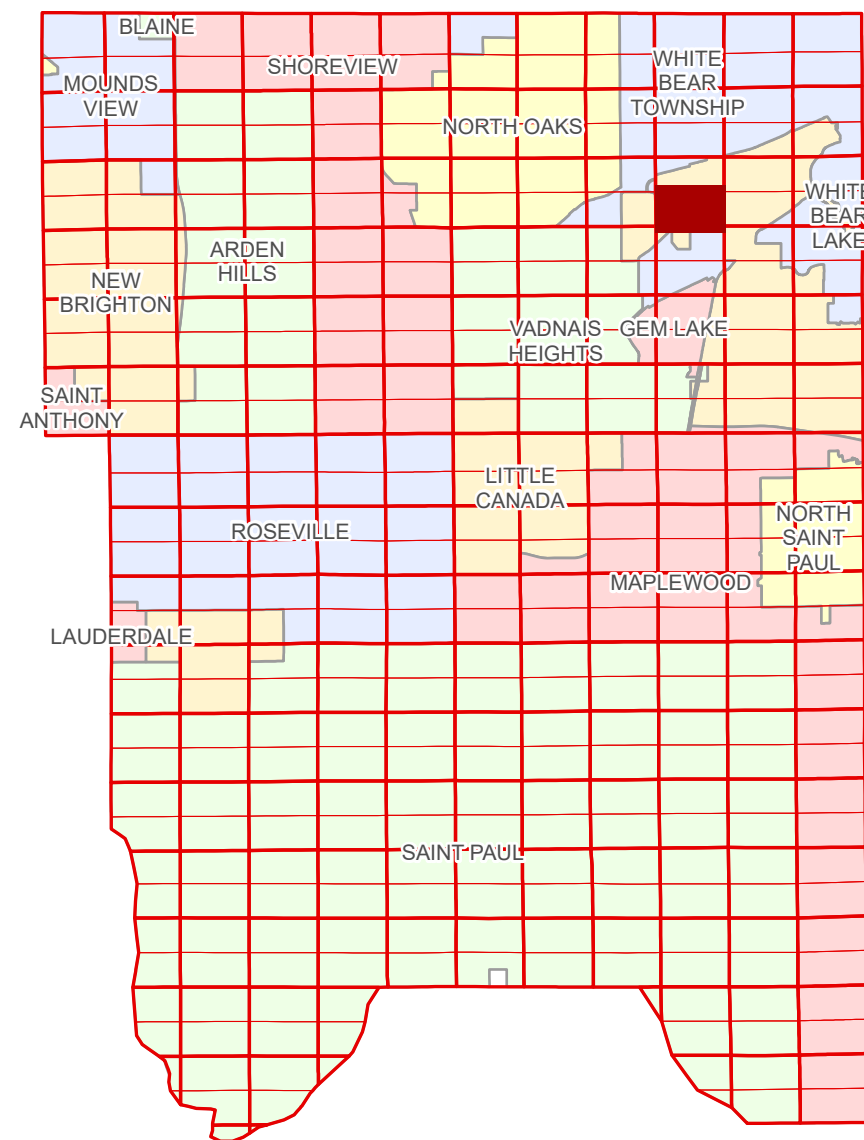


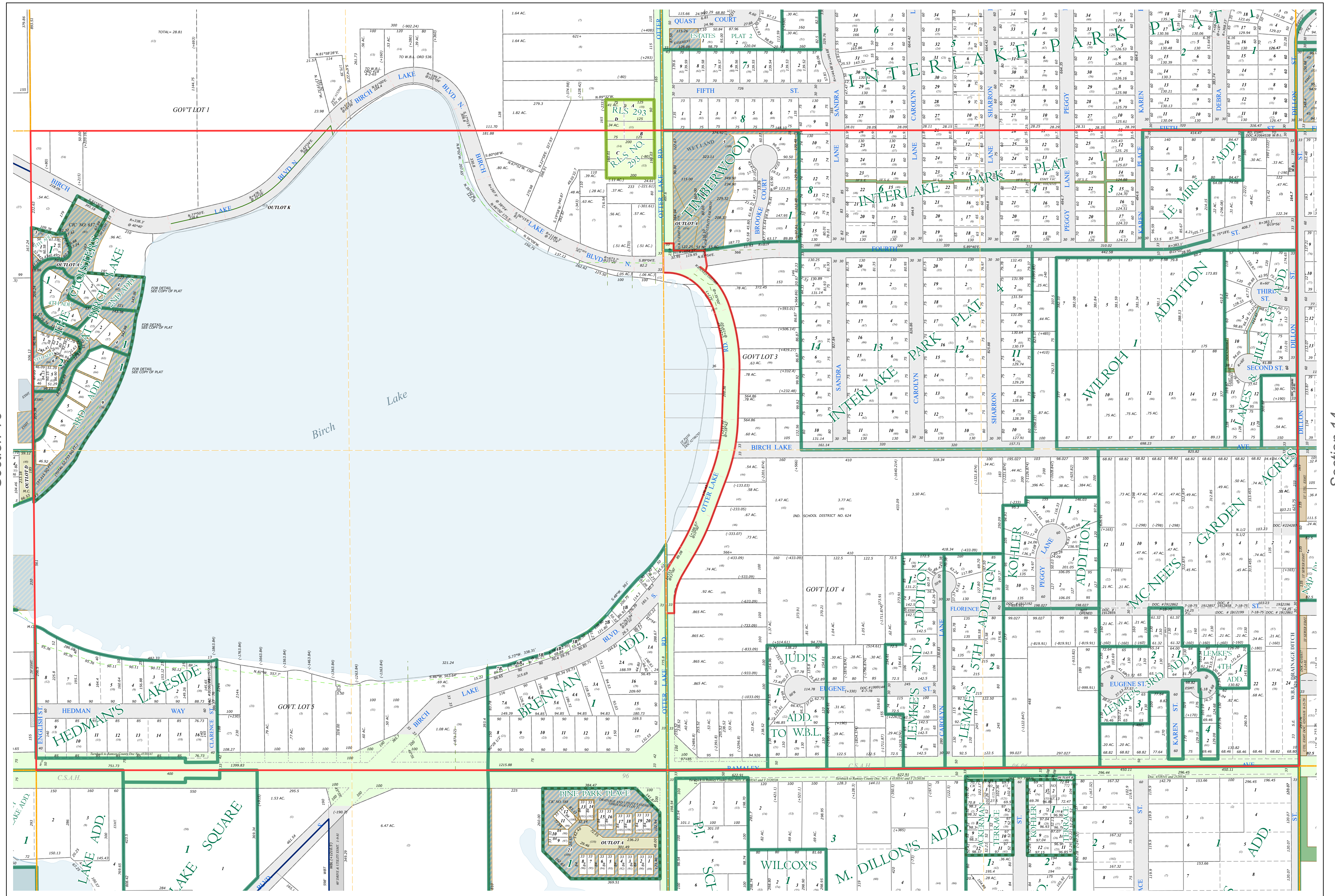
S Half
Section 15
T 30 N
R 22 W

Ramsey County Minnesota Parcel Map

Ramsey County
Section 15



Ramsey County
Section 16



Ramsey County
Section 14

Legend			
	Section		Metes & Bounds
	Quarter		Tax Parcel Type
	Quarter Quarter		Real Property
	County Right of Way		Easement Type
	Municipal Right of Way		Ditch, County & Judicial
	Subdivision Type		Ponding
	Subdivision Plat		Private Access
	Registered Land Survey		Utility, Storm & Sanitary Sewer
	Highway RoW Plat		Utility, Water
	Planned Community		Utility, Unidentified
	Division Type		Drainage & Utility
	Lot		Misc Easements
	Outlot		
	Tract		

The information on this map is a compilation of Ramsey County Records. THE COUNTY DOES NOT WARRANT OR GUARANTEE THE ACCURACY OF THIS DATA. The County disclaims any liability for any injuries, time delays, or expenses you may suffer if you rely in any manner on the accuracy of this data.

NOTE: This is not an official Ramsey County tax lot map. This is based on the data available in the Geographic Information System, which may vary from tax data officially recorded in the Tax System. For an official tax map, please contact the Office of Property Records and Revenue.

Produced by Information Services Enterprise GIS Division
RCGISMetaData@Co.Ramsey.MN.US

651-266-2000
AskPropertyTaxandRecords@co.ramsey.mn.us

Section 22
Ramsey County

