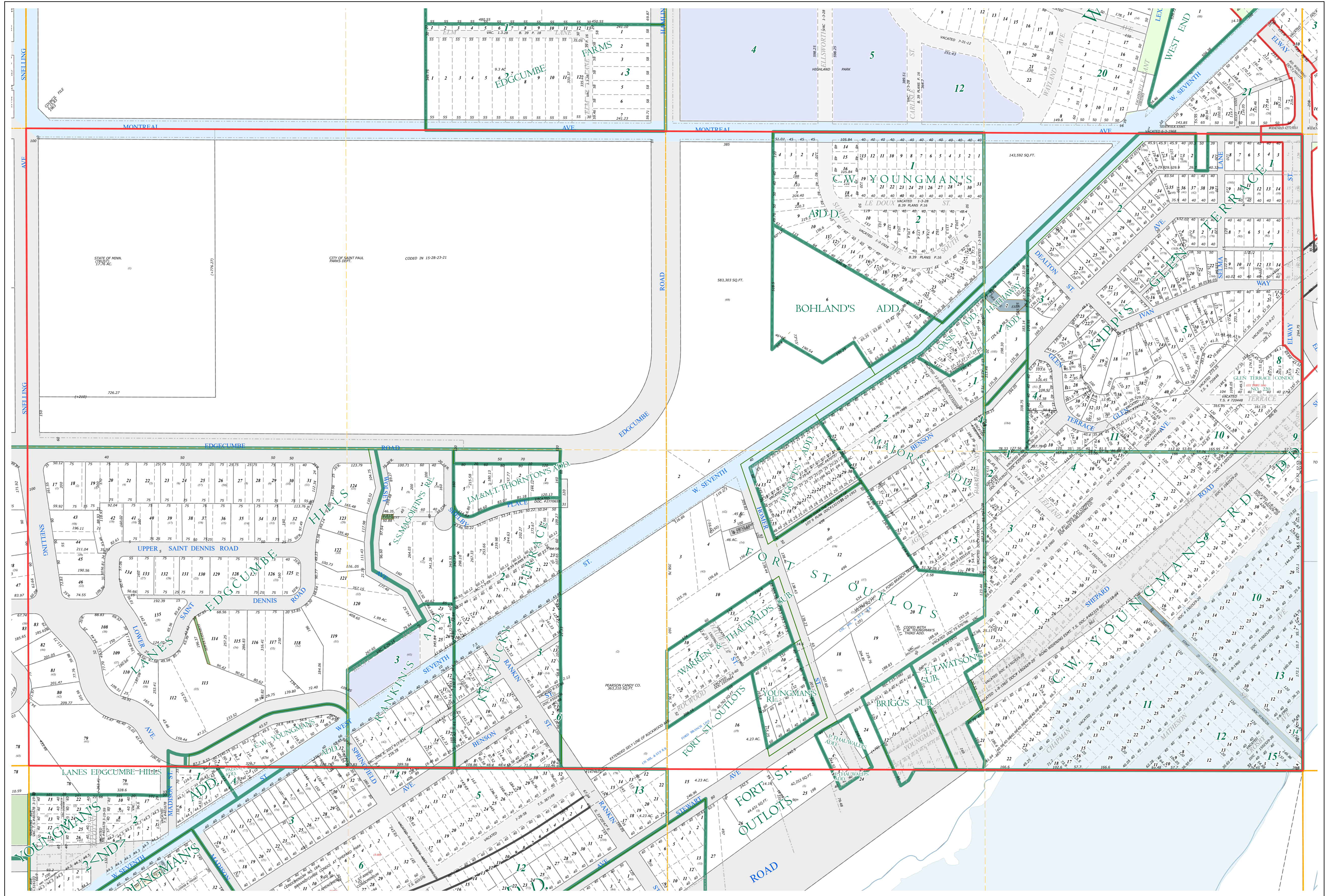
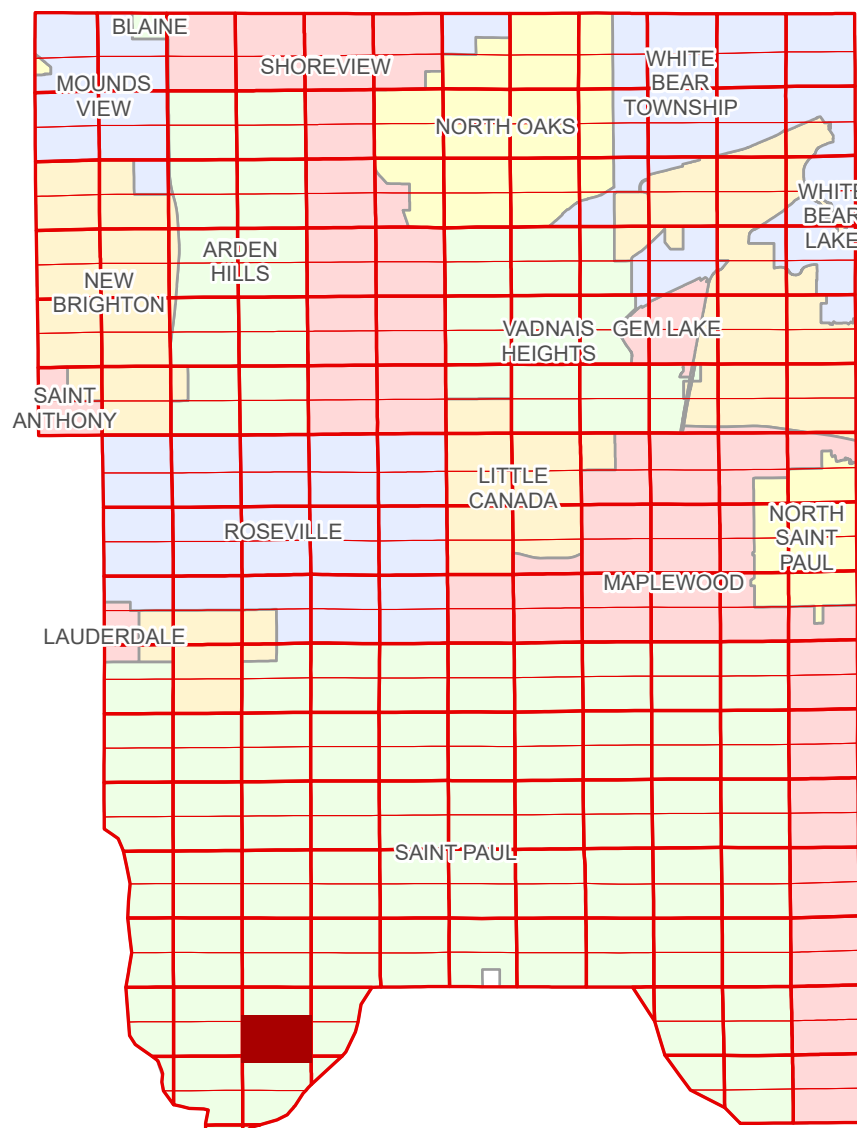


Ramsey County Minnesota Parcel Map

Ramsey County
Section 15

S Half
Section 15
T 28 N
R 23 W



Ramsey County
Section 16

Section 14
Ramsey County

Legend

Section	Metes & Bounds
Quarter	Tax Parcel Type
Quarter Quarter	State Assessed Property
State Right of Way	Real Property
Municipal Right of Way	Tax Parcel
Subdivision Type	Easement Type
Subdivision Plat	Private Driveway
Highway RoW Plat	Utility, Storm & Sanitary Sewer
Division Type	Drainage
Lot	
Other	

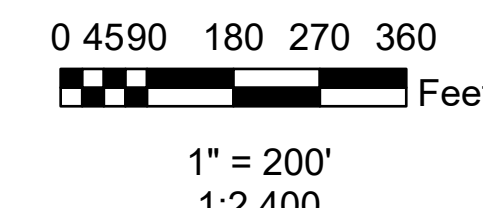
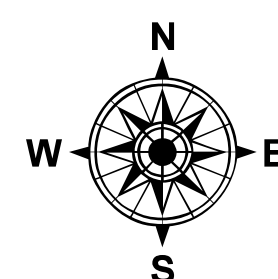
The information on this map is a compilation of Ramsey County Records. THE COUNTY DOES NOT WARRANT OR GUARANTEE THE ACCURACY OF THIS DATA. The County disclaims any liability for any injuries, time delays, or expenses you may suffer if you rely in any manner on the accuracy of this data.

Produced by Information Services Enterprise GIS Division
RCGISMetaData@Co.Ramsey.MN.US

NOTE: This is not an official Ramsey County tax lot map. This is based on the data available in the Geographic Information System, which may vary from tax data officially recorded in the Tax System. For an official tax map, please contact the Office of Property Records and Revenue.

651-266-2000
AskPropertyTaxandRecords@co.ramsey.mn.us

Section 22
Ramsey County



S152823
1/3/2025