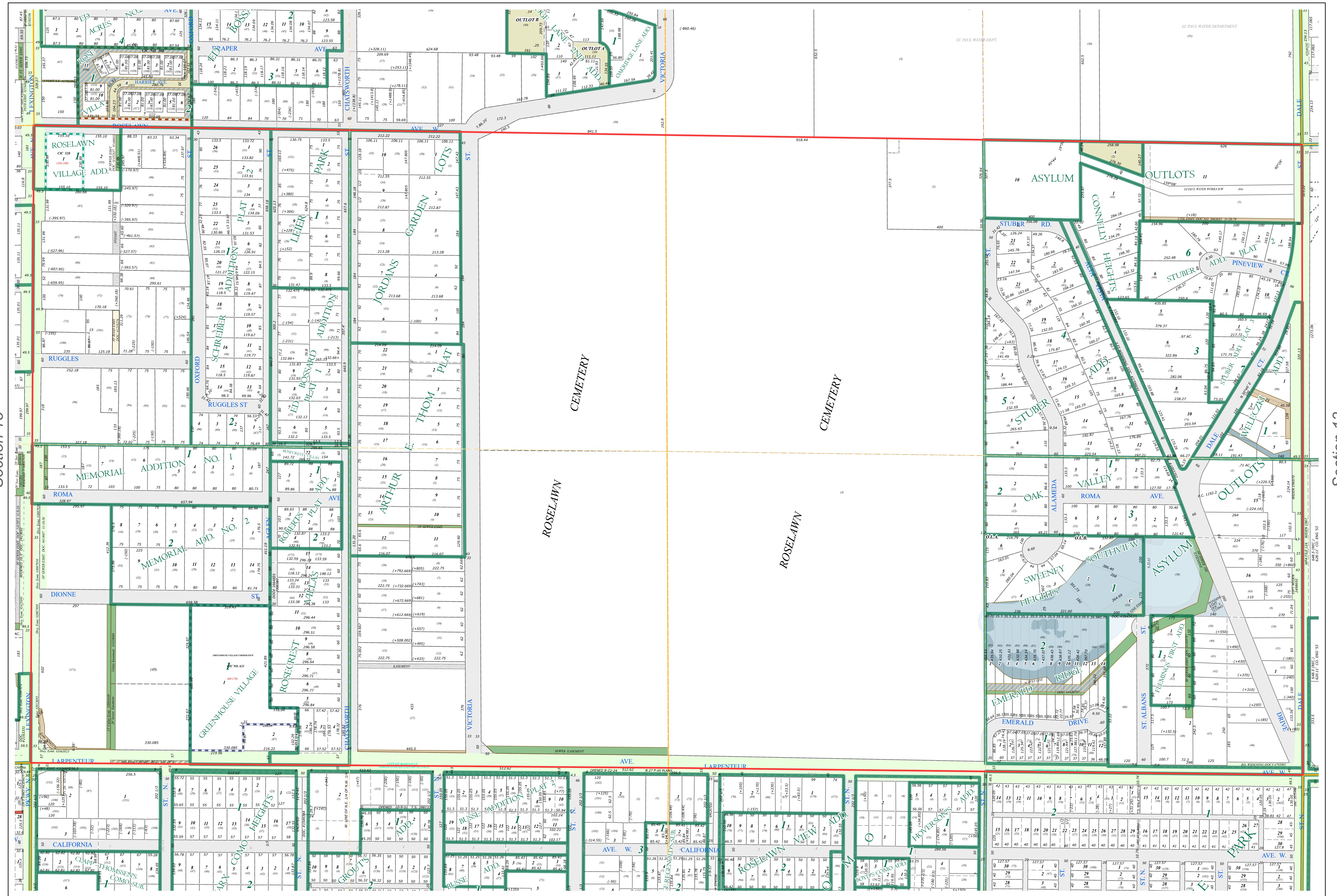
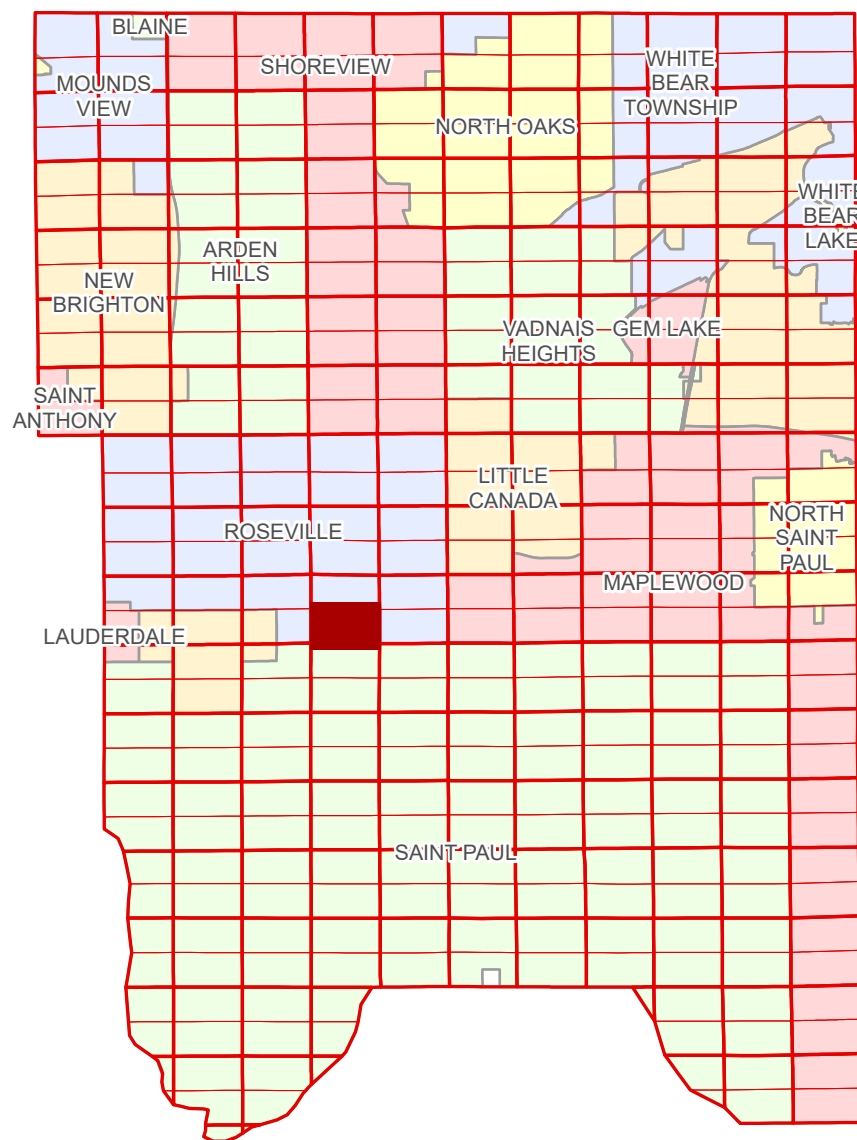


S Half
Section 14
T 29 N
R 23 W

Ramsey County Minnesota Parcel Map

Ramsey County
Section 14



Ramsey County
Section 15

Ramsey County
Section 13

Legend

Section	Tax Parcel Type
Quarter	Personal Property
Quarter Quarter	Real Property
County Right of Way	Easement Type
Municipal Right of Way	Ponding
Subdivision Type	Pedestrian
Subdivision Plat	Private Access
Cooperative	Utility, Storm & Sanitary Sewer
Condominium	Utility, Unidentified
Division Type	Drainage & Utility
Lot	Drainage
Outlot	Misc Easements
Metes & Bounds	

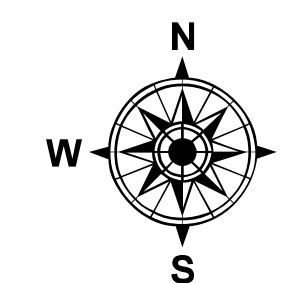
The information on this map is a compilation of Ramsey County Records. THE COUNTY DOES NOT WARRANT OR GUARANTEE THE ACCURACY OF THIS DATA. The County disclaims any liability for any injuries, time delays, or expenses you may suffer if you rely in any manner on the accuracy of this data.

Produced by Information Services Enterprise GIS Division
RCGISMetaData@Co.Ramsey.MN.US

NOTE: This is not an official Ramsey County tax lot map. This is based on the data available in the Geographic Information System, which may vary from tax data officially recorded in the Tax System. For an official tax map, please contact the Office of Property Records and Revenue.

651-266-2000
AskPropertyTaxandRecords@co.ramsey.mn.us

Section 23
Ramsey County



0 4590 180 270 360
Feet

1" = 200'
1:2,400

S142923

1/3/2025