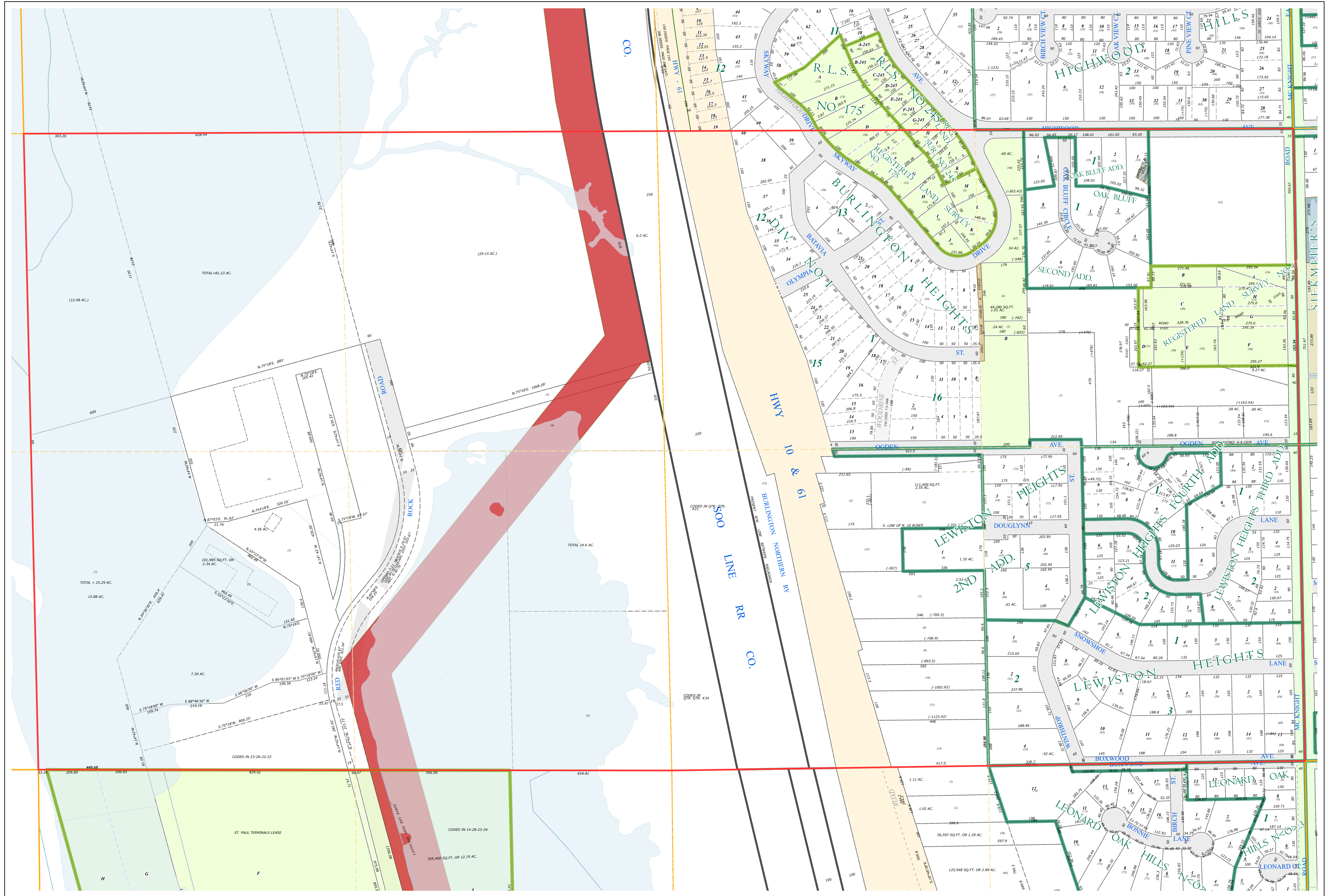
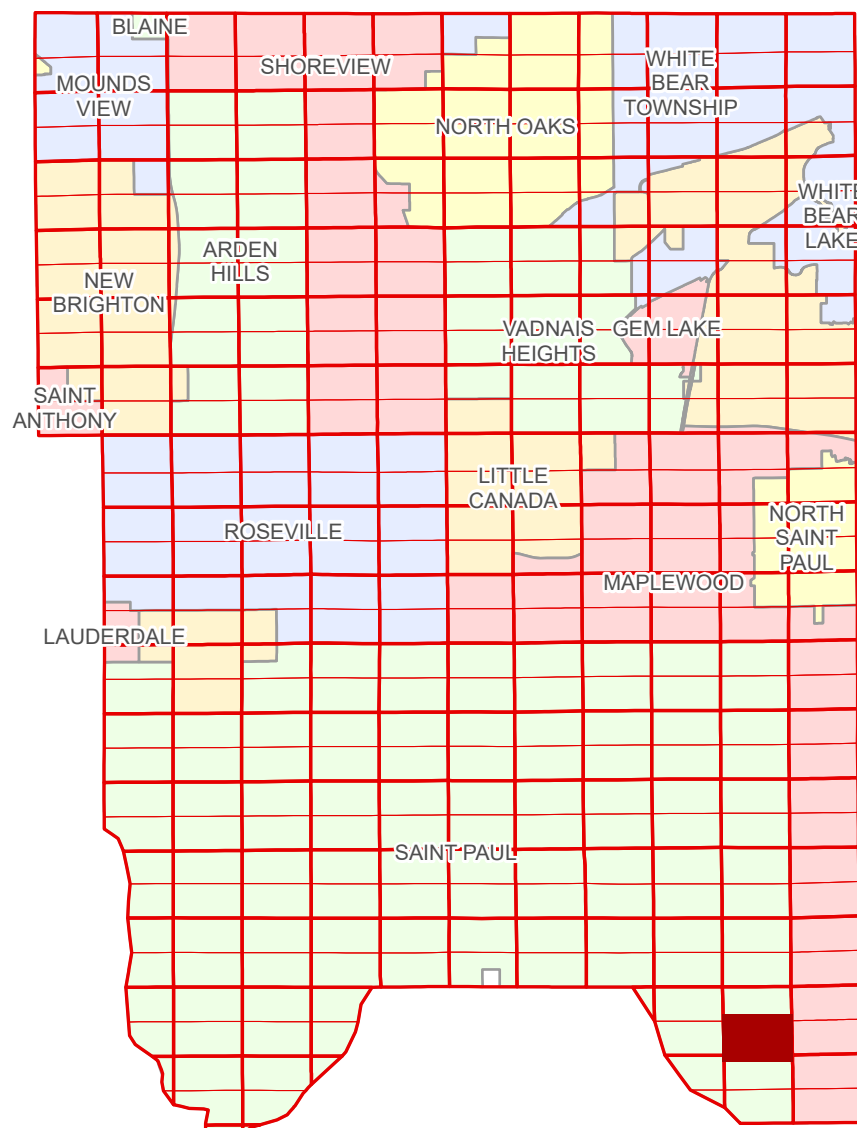


Ramsey County Minnesota Parcel Map

Ramsey County
Section 14

S Half
Section 14
T 28 N
R 22 W



Ramsey County
Section 15

Section 13
Ramsey County

Legend			
	Section		Metes & Bounds
	Quarter		Tax Parcel Type
	Quarter Quarter		Personal Property
	Federal Right of Way		State Assessed Property
	County Right of Way		Real Property
	Municipal Right of Way		Easement Type
	Subdivision Type		Utility, Electric
	Subdivision Plat		Utility, Unidentified
	Registered Land Survey		Drainage & Utility
	Division Type		
	Lot		
	Tract		

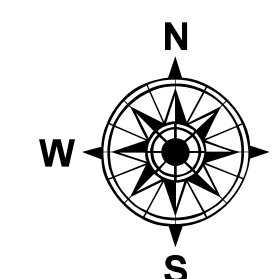
The information on this map is a compilation of Ramsey County Records. THE COUNTY DOES NOT WARRANT OR GUARANTEE THE ACCURACY OF THIS DATA. The County disclaims any liability for any injuries, time delays, or expenses you may suffer if you rely in any manner on the accuracy of this data.

Produced by Information Services Enterprise GIS Division
RCGISMetaData@Co.Ramsey.MN.US

NOTE: This is not an official Ramsey County tax lot map. This is based on the data available in the Geographic Information System, which may vary from tax data officially recorded in the Tax System. For an official tax map, please contact the Office of Property Records and Revenue.

651-266-2000
AskPropertyTaxandRecords@co.ramsey.mn.us

Section 23
Ramsey County



0 450 900 1800 3600 Feet

1" = 200'

1:2400

S142822

1/3/2025